

Department Success and Retention

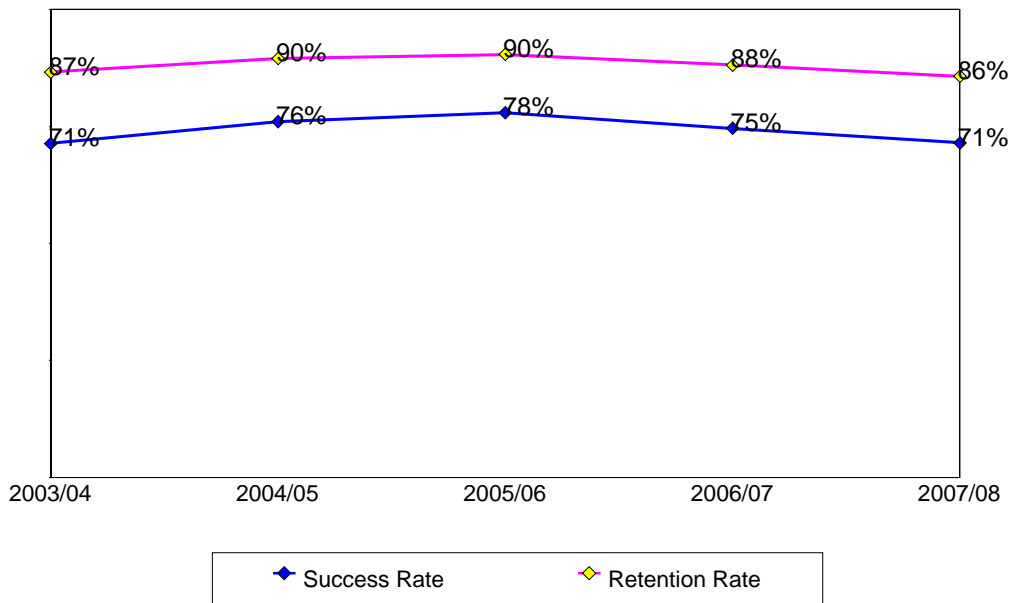
This report contains success and retention rates by various demographic segments and by course. Annual data are an aggregate of the fall and spring semesters. The following parameters have been applied:

- Success Counts: Number of students with A,B,C,CR grades.
- Success Rate: The percentage of students who complete a course with a grade of A,B,C,CR out of total enrollments.
- Retention Counts: Number of students with A,B,C,D,F,CR,NC, I grades.
- Retention Rate: The percentage of students who complete a course with a grade of A,B,C,D,F,CR,NC, I out of total headcount.

Annual Success and Retention

	Headcount	Success Count	Success Rate	Retention Count	Retention Rate
2003/04	584	417	71%	506	87%
2004/05	643	489	76%	576	90%
2005/06	690	538	78%	624	90%
2006/07	811	605	75%	715	88%
2007/08	870	622	71%	746	86%
Change from 2006/07 to 2007/08	59	17	-3%	31	-2%
Totals & Averages	3,598	2,671	74%	3,167	88%

Annual (Fall/Spring) Success and Retention Rates



Source: SMCCCD Data Warehouse

Success and Retention By Term

	Headcount	Success Count	Success Rate	Retention Count	Retention Rate
Fall 2003	301	213	71%	252	84%
Fall 2004	330	245	74%	294	89%
Fall 2005	344	259	75%	305	89%
Fall 2006	408	300	74%	359	88%
Fall 2007	443	312	70%	381	86%
Spring 2004	283	204	72%	254	90%
Spring 2005	313	244	78%	282	90%
Spring 2006	346	279	81%	319	92%
Spring 2007	403	305	76%	356	88%
Spring 2008	427	310	73%	365	85%
Totals & Averages	3,598	2,671	74%	3,167	88%

Grade Distribution

	CR		NC		W	
Fall 2003	213	71%	39	12%	49	17%
Fall 2004	245	74%	49	15%	36	11%
Fall 2005	259	75%	46	14%	38	11%
Fall 2006	300	73%	59	15%	49	12%
Fall 2007	312	68%	69	17%	62	15%
Spring 2004	204	73%	50	18%	26	9%
Spring 2005	244	79%	38	12%	30	9%
Spring 2006	279	79%	40	12%	27	9%
Spring 2007	305	76%	49	13%	47	11%
Spring 2008	309	71%	54	14%	62	15%

Source: SMCCCD Data Warehouse

Success and Retention by Ethnicity

		Headcount	Success Count	Success Rate	Retention Count	Retention Rate
2003/04	African American	45	27	60%	37	82%
	Asian	113	83	73%	102	90%
	Filipino	106	77	73%	91	86%
	Hispanic	130	88	68%	111	85%
	Native American	4	3	75%	3	75%
	Other	23	15	65%	20	87%
	White	144	111	77%	126	88%
	Unreported	19	13	68%	16	84%
	Totals & Averages	584	417	71%	506	87%
2004/05	African American	43	25	58%	38	88%
	Asian	117	98	84%	106	91%
	Filipino	111	89	80%	104	94%
	Hispanic	162	119	73%	141	87%
	Other	28	22	79%	25	89%
	White	165	125	76%	148	90%
	Unreported	17	11	65%	14	82%
		Totals & Averages	643	489	76%	576
2005/06	African American	28	18	64%	25	89%
	Asian	151	127	84%	138	91%
	Filipino	156	126	81%	139	89%
	Hispanic	149	102	68%	129	87%
	Native American	2	2	100%	2	100%
	Other	29	24	83%	27	93%
	White	150	118	79%	141	94%
	Unreported	25	21	84%	23	92%
	Totals & Averages	690	538	78%	624	90%
2006/07	African American	49	29	59%	41	84%
	Asian	148	112	76%	130	88%
	Filipino	209	161	77%	190	91%
	Hispanic	155	106	68%	133	86%
	Native American	9	4	44%	8	89%
	Other	35	25	71%	29	83%
	White	153	126	82%	137	90%
	Unreported	53	42	79%	47	89%
	Totals & Averages	811	605	75%	715	88%
2007/08	African American	65	33	51%	56	86%
	Asian	147	111	76%	129	88%
	Filipino	191	144	75%	162	85%
	Hispanic	186	123	66%	150	81%
	Native American	5	4	80%	4	80%
	Other	29	23	79%	27	93%
	White	172	134	78%	153	89%
	Unreported	75	50	67%	65	87%
	Totals & Averages	870	622	71%	746	86%

Source: SMCCCD Data Warehouse

Success and Retention by Gender

		Headcount	Success Count	Success Rate	Retention Count	Retention Rate
2003/04	Female	323	237	73%	280	87%
	Male	260	179	69%	225	87%
	Totals & Averages	583	416	71%	505	87%
2004/05	Female	361	288	80%	329	91%
	Male	278	198	71%	243	87%
	Unreported	2	1	50%	2	100%
	Totals & Averages	641	487	76%	574	90%
2005/06	Female	371	295	80%	340	92%
	Male	317	241	76%	282	89%
	Unreported	1	1	100%	1	100%
	Totals & Averages	689	537	78%	623	90%
2006/07	Female	438	329	75%	381	87%
	Male	364	268	74%	325	89%
	Unreported	6	6	100%	6	100%
	Totals & Averages	808	603	75%	712	88%
2007/08	Female	454	335	74%	387	85%
	Male	400	275	69%	344	86%
	Unreported	14	10	71%	13	93%
	Totals & Averages	868	620	71%	744	86%

Success and Retention by Day/Evening Status

		Headcount	Success Count	Success Rate	Retention Count	Retention Rate
2003/04	Day	445	315	71%	394	89%
	Evening	139	102	73%	112	81%
2004/05	Day	509	383	75%	461	91%
	Evening	134	106	79%	115	86%
2005/06	Day	538	409	76%	488	91%
	Evening	152	129	85%	136	89%
2006/07	Day	2	2	100%	2	100%
	Evening	637	472	74%	573	90%
2007/08	Day	172	131	76%	140	81%
	Evening	6	3	50%	4	67%
2007/08	Day	639	451	71%	558	87%
	Evening	225	168	75%	184	82%

Source: SMCCCD Data Warehouse

Success and Retention by Age

		Headcount	Success Count	Success Rate	Retention Count	Retention Rate
2003/04	Under 18	2	2	100%	2	100%
	Age 18-22	397	274	69%	340	86%
	Age 23-28	95	69	73%	85	89%
	Age 29-39	51	42	82%	46	90%
	Age 40-49	33	26	79%	28	85%
	Age 50-59	6	4	67%	5	83%
	Totals & Averages	584	417	71%	506	87%
2004/05	Under 18	4	4	100%	4	100%
	Age 18-22	442	330	75%	394	89%
	Age 23-28	121	90	74%	107	88%
	Age 29-39	41	34	83%	38	93%
	Age 40-49	27	26	96%	26	96%
	Age 50-59	6	4	67%	5	83%
	Age 60+	2	1	50%	2	100%
	Totals & Averages	643	489	76%	576	90%
2005/06	Under 18	2	2	100%	2	100%
	Age 18-22	494	382	77%	451	91%
	Age 23-28	120	89	74%	102	85%
	Age 29-39	37	33	89%	36	97%
	Age 40-49	25	23	92%	23	92%
	Age 50-59	11	8	73%	9	82%
	Age 60+	1	1	100%	1	100%
	Totals & Averages	690	538	78%	624	90%
2006/07	Under 18	7	5	71%	7	100%
	Age 18-22	585	434	74%	517	88%
	Age 23-28	135	103	76%	122	90%
	Age 29-39	45	33	73%	36	80%
	Age 40-49	29	23	79%	26	90%
	Age 50-59	9	6	67%	6	67%
	Age 60+	1	1	100%	1	100%
	Totals & Averages	811	605	75%	715	88%
2007/08	Under 18	6	5	83%	6	100%
	Age 18-22	646	451	70%	548	85%
	Age 23-28	128	90	70%	110	86%
	Age 29-39	59	48	81%	54	92%
	Age 40-49	21	18	86%	18	86%
	Age 50-59	10	10	100%	10	100%
	Totals & Averages	870	622	71%	746	86%

Source: SMCCCD Data Warehouse

Success and Retention by Enrollment Status

		Headcount	Success Count	Success Rate	Retention Count	Retention Rate
2003/04	Continuing Student	450	333	74%	395	88%
	Currently K-12	1	1	100%	1	100%
	First-Time Student	47	28	60%	36	77%
	First-Time Transfer Student	34	23	68%	29	85%
	Returning Student	41	24	59%	34	83%
	Returning Transfer Student	11	8	73%	11	100%
2004/05	Continuing Student	513	402	78%	462	90%
	Currently K-12	1	1	100%	1	100%
	First-Time Student	51	29	57%	42	82%
	First-Time Transfer Student	31	23	74%	26	84%
	Returning Student	36	25	69%	34	94%
	Returning Transfer Student	11	9	82%	11	100%
2005/06	Continuing Student	575	471	82%	530	92%
	First-Time Student	57	29	51%	46	81%
	First-Time Transfer Student	26	17	65%	20	77%
	Returning Student	20	11	55%	17	85%
	Returning Transfer Student	12	10	83%	11	92%
2006/07	Continuing Student	648	500	77%	571	88%
	First-Time Student	74	49	66%	68	92%
	First-Time Transfer Student	32	20	63%	26	81%
	Returning Student	34	20	59%	30	88%
	Returning Transfer Student	23	16	70%	20	87%
2007/08	Continuing Student	687	519	76%	599	87%
	Currently K-12	4	1	25%	2	50%
	First-Time Student	62	32	52%	46	74%
	First-Time Transfer Student	40	23	57%	29	73%
	Returning Student	49	27	55%	44	90%
	Returning Transfer Student	28	20	71%	26	93%

Source: SMCCCD Data Warehouse