

## Department Productivity: By Year and By Term

	Census Headcount	End of Term Headcount	FTEF	FTES	WSCH	Load	Sections	Max Enroll
2003/04	275	162	4.18	51.17	1,535	367	18	530
2004/05	147	92	2.76	24.44	733	266	13	334
2005/06	169	131	3.01	25.47	764	254	21	403
2006/07	130	100	2.46	18.75	562	229	20	334
2007/08	161	133	1.97	23.86	716	364	16	256

	Census Headcount	End of Term Headcount	FTEF	FTES	WSCH	Load	Sections	Max Enroll
Fall 2003	139	75	1.88	27.65	830	441	8	215
Fall 2004	69	39	1.50	12.91	387	258	6	185
Fall 2005	55	40	1.18	9.31	279	237	6	135
Fall 2006	54	42	1.22	6.93	208	170	10	162
Fall 2007	82	66	0.93	11.91	357	383	8	129
Spring 2004	136	87	2.30	23.52	706	307	10	315
Spring 2005	78	53	1.26	11.53	346	275	7	149
Spring 2006	114	91	1.83	16.15	485	265	15	268
Spring 2007	76	58	1.23	11.81	354	287	10	172
Spring 2008	79	67	1.03	11.96	359	347	8	128

Source: SMCCCD Data Warehouse

Census Headcount: Number of duplicated headcount at final census.

End of Term Headcount: Number of duplicated headcount at the end of the term.

FTEF: Total number of full time equivalent faculty assigned.

FTES: Total number of full time equivalent students enrolled at first census.

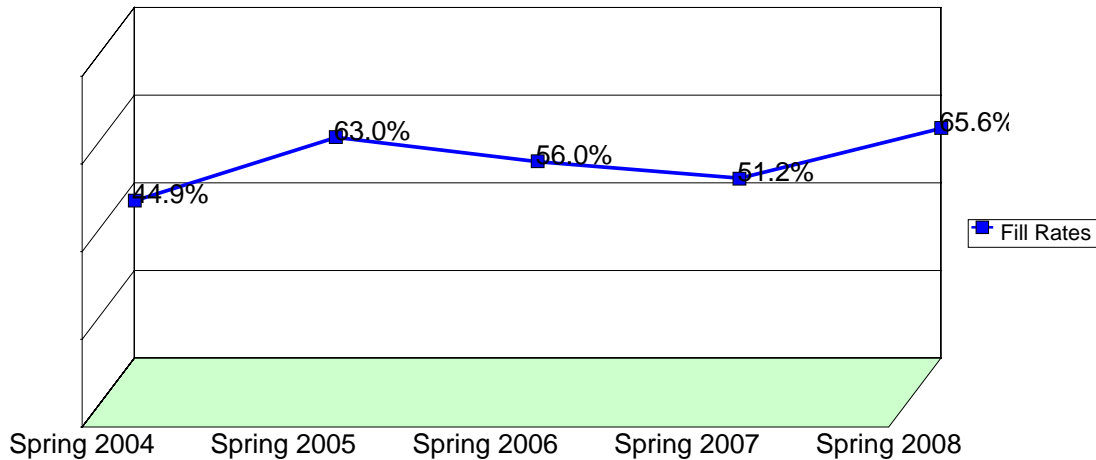
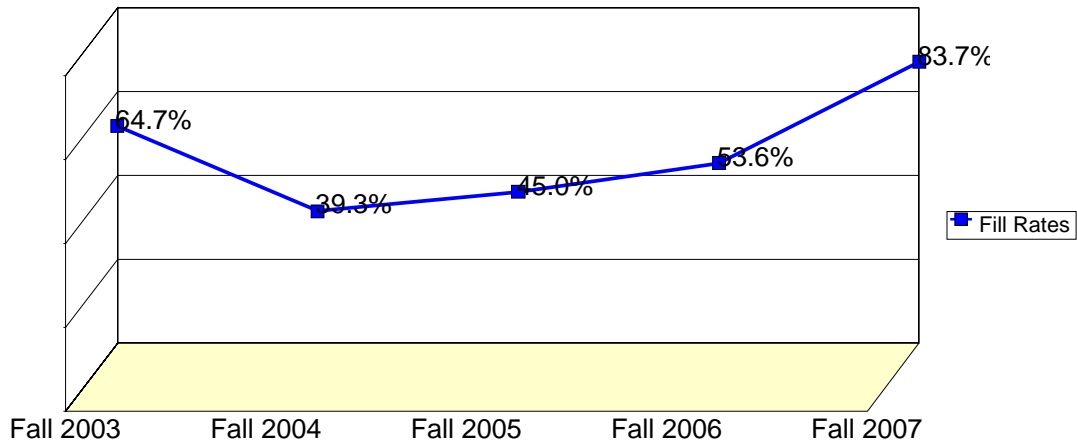
WSCH: Weekly student contact hours generated by census enrollments.

Load: The ratio of WSCH to FTEF, used to measure productivity.

Sections: Total number of sections offered per semester.

Max Enroll: The enrollment capacity or maximum enrollment as defined in curriculum.

## Department Fill Rates by Term



Source: SMCCCD Data Warehouse

\*Note: For a list of courses included in this report, see Department Productivity: Term by Course. Interdepartmental crosslisted courses are included in fill rate figures only. Crosslisted courses have been combined to calculate a single fill rate.

Fill Rates: The percent a class fills/enrolls based on capacity or enrollment maximum defined in the curriculum (does not include positive attendance, open entry/open exit, or independent study classes).

## Department Productivity: Term by Course

				Census Headcount	End of Term Headcount	FTEF	FTES	WSCH	Load	Sections	Max Enroll	
<b>Fall 2003</b>	COMP	118	Intro to Obj-Oriented Prgrm De	37	18	0.68	9.09	273	401	2	60	
		155	Computer Prog. VISUAL BASIC	19	7	0.20	2.85	86	428	1	25	
			Computer Program. Visual Basic	23	14	0.20	3.30	99	495	1	30	
		250	Programming Methods I: C++	18	7	0.20	3.60	108	540	1	25	
		284	Programming Methods I: JAVA	8	7	0.20	1.68	50	252	1	25	
		355	Introduction to Oracle - SQL	19	12	0.20	3.99	120	599	1	25	
		356	Fundamentals of Database Admin	15	10	0.20	3.15	95	473	1	25	
<b>Fall 2004</b>	COMP	118	Intro to Obj-Oriented Prgrm De	25	15	0.70	6.07	182	260	2	60	
		155	Computer Program. Visual Basic	18	7	0.20	2.58	77	387	1	40	
		355	Introduction to Oracle - SQL	10	6	0.20	2.10	63	315	1	25	
		356	Fundamentals of Database Admin I	6	5	0.20	1.26	38	189	1	25	
		378	Programming in PERL	10	6	0.20	0.90	27	135	1	35	
<b>Fall 2005</b>	COMP	118	Intro to Obj-Oriented Prgrm De	15	13	0.68	3.66	110	161	2	60	
		155	Computer Program. Visual Basic	15	11	0.20	2.15	65	323	1	25	
		250	Programming Methods I: C++	15	10	0.20	3.00	90	450	1	25	
	ZG	COMP 665	Intro to Using Linux	6	3	0.05	0.30	9	181	1	25	
		TCOM 665	Intro to Using Linux	8	8	0.05	0.40	12	241	1	25	
	ZH	COMP 665	Intro Linux Admin	4	3	0.05	0.20	6	121	1	25	
TCOM 665		Intro Linux Admin	9	6	0.05	0.45	14	272	1	25		
<b>Fall 2006</b>	COMP	118	Intro to Obj-Oriented Prgrm De	12	6	0.34	3.20	96	282	1	35	
		155	Computer Program. Visual Basic	18	14	0.20	1.98	59	297	1	25	
	ZG	COMP 665	Intro to Using Linux	7	7	0.05	0.35	11	211	1	25	
		TCOM 665	Intro to Using Linux	4	4	0.05	0.20	6	121	1	25	
	ZH	COMP 665	Intro Linux Admin	11	9	0.05	0.55	17	332	1	25	
		TCOM 665	Intro Linux Admin	6	6	0.05	0.30	9	181	1	25	
	ZO	CAOT 412	Flash I	11	11	0.05	0.94	28	566	1	24	
		COMP 412	Flash I	1	1	0.05	0.09	3	51	1	24	
	ZP	CAOT 413	Flash II	8	6	0.05	0.40	12	240	1	24	
		COMP 413	Flash II	2	2	0.05	0.10	3	60	1	24	
	ZQ	COMP 451	PC Configuration & Repair	2	2	0.23	0.61	18	79	1	24	
		TCOM 451	PC Configuration and Repair	19	15	0.24	5.83	175	728	1	24	
	ZR	CAOT 420	JavaScript	2	2	0.05	0.10	3	60	1	32	
		COMP 423	JavaScript	1	1	0.05	0.05	2	30	1	32	
	ZT	COMP 484	Adv. Routing Concepts & Apps	0	0	0.10	0.00	0	0	1	24	
		TCOM 484	Adv. Routing Concepts & Apps	8	7	0.10	0.88	26	264	1	24	
	ZV	COMP 680	Advanced Network Sec.	0	0	0.10	0.00	0	0	1	25	
		TCOM 680	Advanced Network Sec.	12	11	0.10	1.32	40	396	1	25	
	<b>Fall 2007</b>	COMP	155	Computer Program. Visual Basic	18	13	0.20	2.88	86	432	1	25
			355	Introduction to Oracle - SQL	23	18	0.20	5.29	159	794	1	25
		ZM	COMP 314	Managing a Linux System	11	11	0.05	0.69	21	414	1	25
		ZO	CAOT 412	Flash I	19	17	0.05	0.90	27	540	1	35
COMP 412			Flash I	5	3	0.05	0.20	6	120	1	35	
ZP		CAOT 413	Flash II	13	12	0.05	0.65	20	390	1	24	
		COMP 413	Flash II	8	7	0.05	0.40	12	240	1	24	
ZQ		COMP 451	PC Configuration & Repair	5	3	0.23	1.53	46	197	1	24	

				Census	End of						Max
				Headcount	Term	FTEF	FTES	WSCH	Load	Sections	Enroll
	TCOM	451	PC Configuration and Repair	14	13	0.24	4.29	129	537	1	24
ZT	COMP	484	Adv. Routing Concepts & Apps	2	1	0.10	0.29	9	86	1	24
	TCOM	484	Adv. Routing Concepts & Apps	20	19	0.10	3.00	90	900	1	24
ZY	COMP	312	Installing/Using Linux -PC OS	10	10	0.05	0.63	19	376	1	25
<b>Spring 2004</b>	COMP	118	Intro to Obj-Oriented Prgrm De	23	15	0.70	5.07	152	217	2	60
		155	Computer Prog. VISUAL BASIC	17	9	0.20	2.55	77	383	1	40
			Computer Program VISUAL BASIC	14	6	0.20	2.10	63	315	1	40
		250	Programming Methods I: C++	14	11	0.20	2.80	84	420	1	30
		284	Programming Methods I: JAVA	11	6	0.20	2.20	66	330	1	25
		355	Introduction to Oracle - SQL	23	17	0.20	4.60	138	690	1	25
		356	Fundamentals of Database Admin I	8	5	0.20	1.60	48	240	1	25
		378	Programming in PERL	26	18	0.40	2.60	78	195	2	70
<b>Spring 2005</b>	COMP	118	Intro to Obj-Oriented Prgrm De	12	5	0.36	2.40	72	200	1	25
		155	Computer Program VISUAL BASIC	16	11	0.20	2.40	72	360	1	25
		250	Programming Methods I: C++	11	8	0.20	2.20	66	330	1	25
		355	Introduction to Oracle - SQL	12	8	0.20	2.40	72	360	1	25
		356	Fundamentals of Database Admin I	5	2	0.20	1.00	30	150	1	25
ZL	COMP	665	Intro to Linux (Unix) Op Envir	14	13	0.05	0.72	22	432	1	24
	TCOM	665	Intro to Linux (Unix) Op Envir	11	9	0.05	0.57	17	339	1	24
ZM	COMP	665	Intro to System Linux Clients	8	6	0.05	0.41	12	247	1	24
	TCOM	665	Intro to System Linux Clients	20	19	0.05	1.03	31	617	1	24
<b>Spring 2006</b>	COMP	118	Intro to Obj-Oriented Prgrm De	17	13	0.34	3.63	109	320	1	25
		155	Computer Program VISUAL BASIC	18	13	0.20	2.70	81	405	1	40
		250	Programming Methods I: C++	17	15	0.20	3.40	102	510	1	25
		355	Introduction to Oracle - SQL	13	11	0.20	2.60	78	390	1	25
SR	CAOT	420	Javascript	11	6	0.05	0.55	17	330	1	30
	COMP	423	JavaScript	3	0	0.05	0.15	5	90	1	30
SS	CAOT	421	XML	7	5	0.05	0.35	11	210	1	32
	COMP	424	XML	1	0	0.05	0.05	2	30	1	32
TR	CAOT	412	Flash I	27	20	0.05	1.35	41	810	1	30
	COMP	412	Flash I	4	4	0.05	0.20	6	120	1	30
TS	CAOT	413	Flash II	11	8	0.05	0.55	17	330	1	30
	COMP	413	Flash II	5	5	0.05	0.25	8	150	1	30
ZF	COMP	451	PC Configuration & Repair	3	3	0.24	0.90	27	114	1	24
	TCOM	451	PC Configuration and Repair	8	8	0.24	2.40	72	304	1	24
ZL	COMP	665	Intro Using Linux	11	7	0.05	0.50	15	302	1	25
	TCOM	665	Intro Using Linux	5	5	0.05	0.23	7	137	1	25
ZM	COMP	665	Intro Linux Sys Admin	7	7	0.05	0.36	11	216	1	25
	TCOM	665	Intro Linux Sys Admin	8	8	0.05	0.41	12	247	1	25
ZP	COMP	481	Network Systems Administration	6	6	0.10	0.86	26	258	1	30
	TCOM	481	Network System Adm	6	6	0.10	0.86	26	258	1	30
ZQ	COMP	484	Adv. Routing Concepts & Apps	1	1	0.10	0.13	4	40	1	30
	TCOM	484	Routing Concepts & Apps	9	8	0.10	0.90	27	270	1	30
ZR	COMP	486	Network Security	1	1	0.10	0.10	3	30	1	24
	TCOM	486	Network Security	16	15	0.10	1.60	48	480	1	24
ZS	COMP	665	Linux Network Admin	7	5	0.05	0.32	10	192	1	25
	TCOM	665	Linux Network Admin	14	9	0.05	0.56	17	336	1	25
<b>Spring 2007</b>	COMP	155	Computer Program VISUAL BASIC	14	12	0.20	2.10	63	315	1	25

				Census Headcount	End of Term Headcount	FTEF	FTES	WSCH	Load	Sections	Max Enroll	
2007		250	Programming Methods I: C++	14	9	0.20	2.80	84	420	1	25	
		355	Introduction to Oracle - SQL	9	4	0.20	1.80	54	270	1	25	
	TR	CAOT 412	Flash I	10	10	0.05	0.50	15	300	1	30	
		COMP 412	Flash I	6	6	0.05	0.30	9	180	1	30	
	TS	CAOT 413	Flash II	8	8	0.05	0.40	12	240	1	30	
		COMP 413	Flash II	7	7	0.05	0.35	11	210	1	30	
	ZF	COMP 451	PC Configuration & Repair	8	5	0.23	2.40	72	309	1	24	
		TCOM 451	PC Configuration and Repair	9	8	0.23	2.70	81	347	1	24	
	ZP	COMP 481	Network Systems Administration	4	3	0.10	0.57	17	172	1	30	
		TCOM 481	Network System Adm	16	16	0.10	2.29	69	688	1	30	
	ZR	COMP 486	Network Security	5	3	0.10	0.50	15	150	1	30	
		TCOM 486	Network Security	15	12	0.10	1.50	45	450	1	30	
	ZV	COMP 316	Managing Linux-Based Intra-net	5	5	0.05	0.55	17	330	1	25	
		TCOM 316	Managing Linux-Based Intra-net	1	1	0.05	0.11	3	66	1	25	
	ZW	COMP 315	Managing Linux-Based Internet	4	4	0.05	0.44	13	264	1	25	
		TCOM 315	Managing Linux-Based Internet	3	3	0.05	0.33	10	198	1	25	
	Spring 2008		COMP 155	Computer Program VISUAL BASIC	20	19	0.20	3.00	90	450	1	24
			355	Introduction to Oracle - SQL	12	8	0.20	2.64	79	396	1	25
		TR	CAOT 412	Flash I	18	10	0.10	0.70	21	210	1	30
		COMP 412	Flash I	14	11	0.05	0.60	18	360	1	30	
TS		CAOT 413	Flash II	11	7	0.10	0.50	15	150	1	30	
		COMP 413	Flash II	8	7	0.05	0.40	12	240	1	30	
ZF		COMP 451	PC Configuration & Repair	10	7	0.23	3.07	92	394	1	24	
		TCOM 451	PC Configuration and Repair	13	12	0.23	3.99	120	513	1	24	
ZP		COMP 481	Network Systems Administration	4	4	0.10	0.56	17	168	1	24	
ZQ		COMP 316	Managing Linux-Based Intra-net	9	9	0.10	1.41	42	423	1	24	
ZR		COMP 486	Network Security	2	2	0.10	0.28	8	84	1	25	
		TCOM 486	Network Security	10	10	0.10	1.40	42	420	1	25	

Source: SMCCCD Datawarehouse

\*Note: Courses are sorted by crosslist group code. Interdepartmental crosslisted courses are included in fill rate figures only.

Census Headcount: Number of duplicated headcount at final census.  
 End of Term Headcount: Number of duplicated headcount at the end of the term.  
 FTEF: Total number of full time equivalent faculty assigned.  
 FTES: Total number of full time equivalent students enrolled at first census.  
 WSCH: Weekly student contact hours generated by census enrollments.  
 Load: The ratio of WSCH to FTEF, used to measure productivity.  
 Sections: Total number of sections offered per semester.  
 Max Enroll: The enrollment capacity or maximum enrollment as defined in curriculum.