

## Department Success and Retention

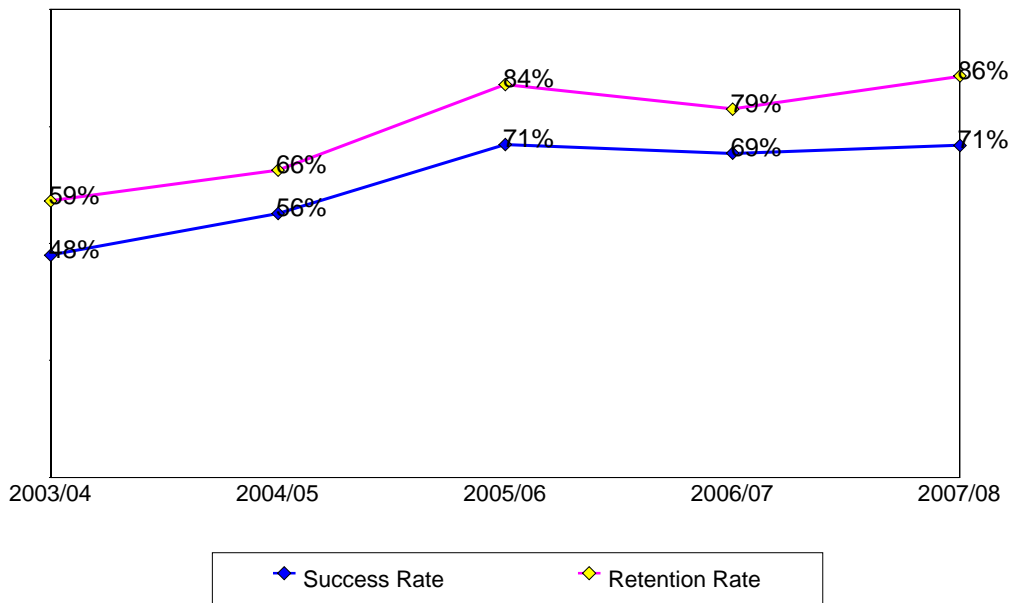
This report contains success and retention rates by various demographic segments and by course. Annual data are an aggregate of the fall and spring semesters. The following parameters have been applied:

- Success Counts: Number of students with A,B,C,CR grades.
- Success Rate: The percentage of students who complete a course with a grade of A,B,C,CR out of total enrollments.
- Retention Counts: Number of students with A,B,C,D,F,CR,NC, I grades.
- Retention Rate: The percentage of students who complete a course with a grade of A,B,C,D,F,CR,NC, I out of total headcount.

### Annual Success and Retention

	Headcount	Success Count	Success Rate	Retention Count	Retention Rate
2003/04	242	115	48%	143	59%
2004/05	140	79	56%	92	66%
2005/06	156	111	71%	131	84%
2006/07	127	88	69%	100	79%
2007/08	155	110	71%	133	86%
Change from 2006/07 to 2007/08	28	22	2%	33	7%
<b>Totals &amp; Averages</b>	<b>820</b>	<b>503</b>	<b>61%</b>	<b>599</b>	<b>73%</b>

**Annual (Fall/Spring) Success and Retention Rates**



Source: SMCCCD Data Warehouse

**Success and Retention By Term**

	<b>Headcount</b>	<b>Success Count</b>	<b>Success Rate</b>	<b>Retention Count</b>	<b>Retention Rate</b>
Fall 2003	136	59	<b>43%</b>	75	<b>55%</b>
Fall 2004	67	31	<b>46%</b>	39	<b>58%</b>
Fall 2005	50	33	<b>66%</b>	40	<b>80%</b>
Fall 2006	51	36	<b>71%</b>	42	<b>82%</b>
Fall 2007	80	57	<b>71%</b>	66	<b>83%</b>
Spring 2004	106	56	<b>53%</b>	68	<b>64%</b>
Spring 2005	73	48	<b>66%</b>	53	<b>73%</b>
Spring 2006	106	78	<b>74%</b>	91	<b>86%</b>
Spring 2007	76	52	<b>68%</b>	58	<b>76%</b>
Spring 2008	75	53	<b>71%</b>	67	<b>89%</b>
<b>Totals &amp; Averages</b>	<b>820</b>	<b>503</b>	<b>61%</b>	<b>599</b>	<b>73%</b>

**Grade Distribution**

	<b>A</b>		<b>B</b>		<b>C</b>		<b>D</b>		<b>F</b>		<b>CR</b>		<b>NC</b>		<b>W</b>	
Fall 2003	28	23%	15	12%	12	10%	5	3%	7	6%		4	3%	59	42%	
Fall 2004	13	24%	9	13%	8	11%			2	4%		6	4%	27	44%	
Fall 2005	21	40%	8	15%	4	10%	1	2%	5	15%				10	18%	
Fall 2006	26	54%	5	5%	3	7%	1	2%	5	11%				9	21%	
Fall 2007	33	49%	12	13%	3	4%			7	9%	1	0%	2	3%	13	21%
Spring 2004	26	25%	20	22%	7	6%	1	1%	5	4%	1	1%	6	5%	35	35%
Spring 2005	31	42%	11	15%	2	3%	2	3%	2	2%	2	3%	1	2%	19	30%
Spring 2006	47	47%	14	16%	9	10%	1	1%	11	13%				14	12%	
Spring 2007	33	52%	7	11%	3	5%			4	5%	5	7%		17	19%	
Spring 2008	32	47%	15	25%	1	1%	2	3%	10	13%		1	0%	8	11%	

Source: SMCCCD Data Warehouse

**Success and Retention by Ethnicity**

		Headcount	Success Count	Success Rate	Retention Count	Retention Rate
2003/04	African American	2				
	Asian	105	52	50%	62	59%
	Filipino	37	16	43%	23	62%
	Hispanic	28	11	39%	11	39%
	Native American	1			1	100%
	Other	5	2	40%	4	80%
	White	54	28	52%	35	65%
	Unreported	10	6	60%	7	70%
	<b>Totals &amp; Averages</b>	<b>242</b>	<b>115</b>	<b>48%</b>	<b>143</b>	<b>59%</b>
2004/05	African American	3	2	67%	3	100%
	Asian	61	35	57%	40	66%
	Filipino	17	10	59%	11	65%
	Hispanic	13	6	46%	8	62%
	Other	2	1	50%	1	50%
	White	38	22	58%	24	63%
	Unreported	6	3	50%	5	83%
	<b>Totals &amp; Averages</b>	<b>140</b>	<b>79</b>	<b>56%</b>	<b>92</b>	<b>66%</b>
	2005/06	African American	2	1	50%	2
Asian		56	39	70%	47	84%
Filipino		16	12	75%	13	81%
Hispanic		15	12	80%	12	80%
Native American		1				
Other		8	3	38%	7	88%
White		42	34	81%	36	86%
Unreported		16	10	63%	14	88%
<b>Totals &amp; Averages</b>		<b>156</b>	<b>111</b>	<b>71%</b>	<b>131</b>	<b>84%</b>
2006/07	African American	2	2	100%	2	100%
	Asian	49	39	80%	41	84%
	Filipino	12	8	67%	11	92%
	Hispanic	14	10	71%	12	86%
	Other	2	1	50%	1	50%
	White	33	18	55%	22	67%
	Unreported	15	10	67%	11	73%
	<b>Totals &amp; Averages</b>	<b>127</b>	<b>88</b>	<b>69%</b>	<b>100</b>	<b>79%</b>
	2007/08	African American	3	1	33%	3
Asian		52	41	79%	44	85%
Filipino		13	7	54%	10	77%
Hispanic		22	11	50%	18	82%
Native American		2	1	50%	1	50%
Other		1				
White		46	36	78%	42	91%
Unreported		16	13	81%	15	94%
<b>Totals &amp; Averages</b>		<b>155</b>	<b>110</b>	<b>71%</b>	<b>133</b>	<b>86%</b>

Source: SMCCCD Data Warehouse

**Success and Retention by Gender**

		Headcount	Success Count	Success Rate	Retention Count	Retention Rate
2003/04	Female	61	28	46%	34	56%
	Male	179	86	48%	108	60%
	<b>Totals &amp; Averages</b>	240	114	48%	142	59%
2004/05	Female	29	19	66%	22	76%
	Male	110	60	55%	69	63%
	Unreported	1			1	100%
	<b>Totals &amp; Averages</b>	140	79	56%	92	66%
2005/06	Female	30	22	73%	23	77%
	Male	123	86	70%	105	85%
	Unreported	3	3	100%	3	100%
	<b>Totals &amp; Averages</b>	156	111	71%	131	84%
2006/07	Female	25	13	52%	18	72%
	Male	99	72	73%	79	80%
	Unreported	3	3	100%	3	100%
	<b>Totals &amp; Averages</b>	127	88	69%	100	79%
2007/08	Female	38	24	63%	28	74%
	Male	110	80	73%	99	90%
	Unreported	6	5	83%	5	83%
	<b>Totals &amp; Averages</b>	154	109	71%	132	86%

**Success and Retention by Day/Evening Status**

		Headcount	Success Count	Success Rate	Retention Count	Retention Rate
2003/04	Day	95	44	46%	51	54%
	Evening	147	71	48%	92	63%
2004/05	Day	37	23	62%	24	65%
	Evening	103	56	54%	68	66%
2005/06	Day	54	37	69%	46	85%
	Evening	102	74	73%	85	83%
2006/07	Evening	127	88	69%	100	79%
2007/08	Evening	155	110	71%	133	86%

Source: SMCCCD Data Warehouse

**Success and Retention by Age**

		<b>Headcount</b>	<b>Success Count</b>	<b>Success Rate</b>	<b>Retention Count</b>	<b>Retention Rate</b>
2003/04	Under 18	3	2	<b>67%</b>	2	<b>67%</b>
	Age 18-22	77	30	<b>39%</b>	36	<b>47%</b>
	Age 23-28	43	23	<b>53%</b>	28	<b>65%</b>
	Age 29-39	63	32	<b>51%</b>	41	<b>65%</b>
	Age 40-49	31	18	<b>58%</b>	23	<b>74%</b>
	Age 50-59	22	8	<b>36%</b>	11	<b>50%</b>
	Age 60+	3	2	<b>67%</b>	2	<b>67%</b>
	<b>Totals &amp; Averages</b>	<b>242</b>	<b>115</b>	<b>48%</b>	<b>143</b>	<b>59%</b>
2004/05	Under 18	1	1	<b>100%</b>	1	<b>100%</b>
	Age 18-22	53	24	<b>45%</b>	26	<b>49%</b>
	Age 23-28	31	21	<b>68%</b>	23	<b>74%</b>
	Age 29-39	34	18	<b>53%</b>	25	<b>74%</b>
	Age 40-49	7	5	<b>71%</b>	5	<b>71%</b>
	Age 50-59	13	10	<b>77%</b>	12	<b>92%</b>
	Age 60+	1				
	<b>Totals &amp; Averages</b>	<b>140</b>	<b>79</b>	<b>56%</b>	<b>92</b>	<b>66%</b>
2005/06	Age 18-22	55	36	<b>65%</b>	48	<b>87%</b>
	Age 23-28	43	28	<b>65%</b>	34	<b>79%</b>
	Age 29-39	30	24	<b>80%</b>	25	<b>83%</b>
	Age 40-49	12	11	<b>92%</b>	11	<b>92%</b>
	Age 50-59	16	12	<b>75%</b>	13	<b>81%</b>
	<b>Totals &amp; Averages</b>	<b>156</b>	<b>111</b>	<b>71%</b>	<b>131</b>	<b>84%</b>
2006/07	Age 18-22	34	25	<b>74%</b>	26	<b>76%</b>
	Age 23-28	27	15	<b>56%</b>	18	<b>67%</b>
	Age 29-39	35	22	<b>63%</b>	27	<b>77%</b>
	Age 40-49	12	9	<b>75%</b>	11	<b>92%</b>
	Age 50-59	17	15	<b>88%</b>	16	<b>94%</b>
	Age 60+	2	2	<b>100%</b>	2	<b>100%</b>
	<b>Totals &amp; Averages</b>	<b>127</b>	<b>88</b>	<b>69%</b>	<b>100</b>	<b>79%</b>
2007/08	Under 18	3	1	<b>33%</b>	1	<b>33%</b>
	Age 18-22	31	18	<b>58%</b>	27	<b>87%</b>
	Age 23-28	41	30	<b>73%</b>	38	<b>93%</b>
	Age 29-39	41	31	<b>76%</b>	35	<b>85%</b>
	Age 40-49	22	15	<b>68%</b>	17	<b>77%</b>
	Age 50-59	11	9	<b>82%</b>	9	<b>82%</b>
	Age 60+	6	6	<b>100%</b>	6	<b>100%</b>
	<b>Totals &amp; Averages</b>	<b>155</b>	<b>110</b>	<b>71%</b>	<b>133</b>	<b>86%</b>

Source: SMCCCD Data Warehouse

**Success and Retention by Enrollment Status**

		<b>Headcount</b>	<b>Success Count</b>	<b>Success Rate</b>	<b>Retention Count</b>	<b>Retention Rate</b>
2003/04	Continuing Student	143	68	<b>48%</b>	81	<b>57%</b>
	Currently K-12	3	1	<b>33%</b>	2	<b>67%</b>
	First-Time Student	12	4	<b>33%</b>	5	<b>42%</b>
	First-Time Transfer Student	25	20	<b>80%</b>	22	<b>88%</b>
	Returning Student	33	13	<b>39%</b>	20	<b>61%</b>
	Returning Transfer Student	26	9	<b>35%</b>	13	<b>50%</b>
2004/05	Continuing Student	76	38	<b>50%</b>	43	<b>57%</b>
	Currently K-12	1	1	<b>100%</b>	1	<b>100%</b>
	First-Time Student	4	4	<b>100%</b>	4	<b>100%</b>
	First-Time Transfer Student	17	13	<b>76%</b>	13	<b>76%</b>
	Returning Student	27	11	<b>41%</b>	17	<b>63%</b>
	Returning Transfer Student	15	12	<b>80%</b>	14	<b>93%</b>
2005/06	Continuing Student	98	70	<b>71%</b>	86	<b>88%</b>
	First-Time Student	7	5	<b>71%</b>	7	<b>100%</b>
	First-Time Transfer Student	19	13	<b>68%</b>	15	<b>79%</b>
	Returning Student	19	14	<b>74%</b>	14	<b>74%</b>
	Returning Transfer Student	13	9	<b>69%</b>	9	<b>69%</b>
2006/07	Continuing Student	71	49	<b>69%</b>	55	<b>77%</b>
	First-Time Student	3	3	<b>100%</b>	3	<b>100%</b>
	First-Time Transfer Student	19	12	<b>63%</b>	15	<b>79%</b>
	Returning Student	17	10	<b>59%</b>	11	<b>65%</b>
	Returning Transfer Student	17	14	<b>82%</b>	16	<b>94%</b>
2007/08	Continuing Student	81	57	<b>70%</b>	69	<b>85%</b>
	Currently K-12	2				
	First-Time Student	3	2	<b>67%</b>	2	<b>67%</b>
	First-Time Transfer Student	29	22	<b>76%</b>	26	<b>90%</b>
	Returning Student	20	17	<b>85%</b>	19	<b>95%</b>
	Returning Transfer Student	20	12	<b>60%</b>	17	<b>85%</b>

Source: SMCCCD Data Warehouse