

Skyline College Productivity By Year and By Term

	Census Headcount	End of Term Headcount	FTEF	FTES	WSCH	Load	Sections	Max Enroll
2003/04	54,901	45,312	342.16	7,120.89	213,627	624	1962	82,957
2004/05	53,902	44,634	354.60	6,946.97	208,409	588	2014	85,655
2005/06	54,458	45,010	377.90	6,919.14	207,574	549	2165	96,895
2006/07	50,121	41,088	380.70	6,808.47	204,254	537	2194	92,700
2007/08	54,441	43,615	393.42	7,334.65	220,040	559	2289	95,360

	Census Headcount	End of Term Headcount	FTEF	FTES	WSCH	Load	Sections	Max Enroll
Fall 2003	23,959	19,726	147.80	3,133.26	93,998	636	833	34,693
Fall 2004	22,347	18,673	153.19	3,031.87	90,956	594	837	37,004
Fall 2005	24,068	19,821	162.52	3,018.82	90,565	557	896	39,895
Fall 2006	21,398	17,512	166.01	3,062.63	91,879	553	925	38,898
Fall 2007	22,671	18,004	170.20	3,195.75	95,872	563	965	42,788
Spring 2004	22,653	18,527	156.59	3,083.35	92,501	591	889	38,348
Spring 2005	23,560	19,258	161.58	3,074.08	92,222	571	921	37,490
Spring 2006	22,355	18,503	170.82	3,042.78	91,283	534	983	42,715
Spring 2007	21,215	17,152	162.19	2,889.02	86,671	534	948	40,405
Spring 2008	23,599	18,784	174.15	3,250.87	97,526	560	1011	41,566
Summer 2003	8,289	7,059	37.76	904.27	27,128	718	240	9,916
Summer 2004	7,995	6,703	39.83	841.02	25,231	633	256	11,161
Summer 2005	8,035	6,686	44.57	857.53	25,726	577	286	14,285
Summer 2006	7,508	6,424	52.51	856.82	25,705	490	321	13,397
Summer 2007	8,171	6,827	49.06	888.03	26,641	543	313	11,006

Source: SMCCCD Data Warehouse

Census Headcount: Number of duplicated headcount at census.

End of Term Headcount: Number of duplicated headcount at the end of the term. For the current term, this figure rolls until the term ends.

FTEF: Total number of full time equivalent faculty assigned.

FTES: Total number of full time equivalent students enrolled at first census.

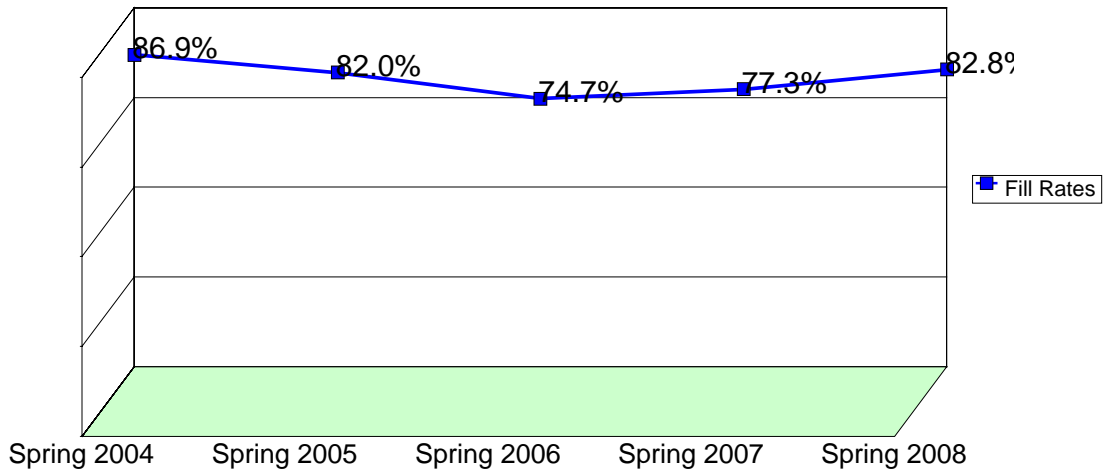
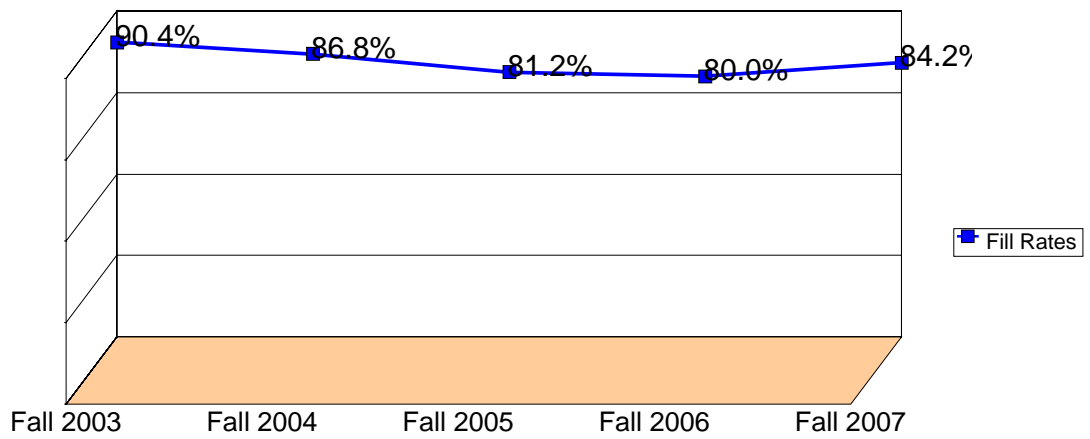
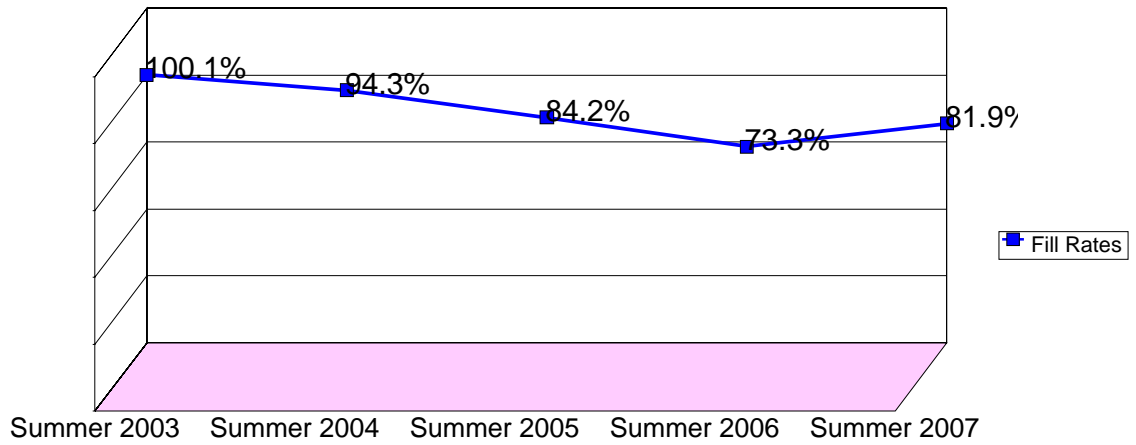
WSCH: Weekly student contact hours generated by census enrollments.

Load: The ratio of WSCH to FTEF, used to measure productivity.

Sections: Total number of sections offered per semester.

Max Enroll: The enrollment capacity or maximum enrollment as defined in curriculum.

College-wide Fill Rates By Term



Source: SMCCCD Data Warehouse

*Note: Crosslisted courses have been combined to calculate a single fill rate.

Fill Rates: The percent a class fills/enrolls based on capacity or enrollment maximum defined in the curriculum (does not include positive attendance, open entry/open exit, or independent study classes).