

All Course Success and Retention Rates Fall 2003 to Spring 2008

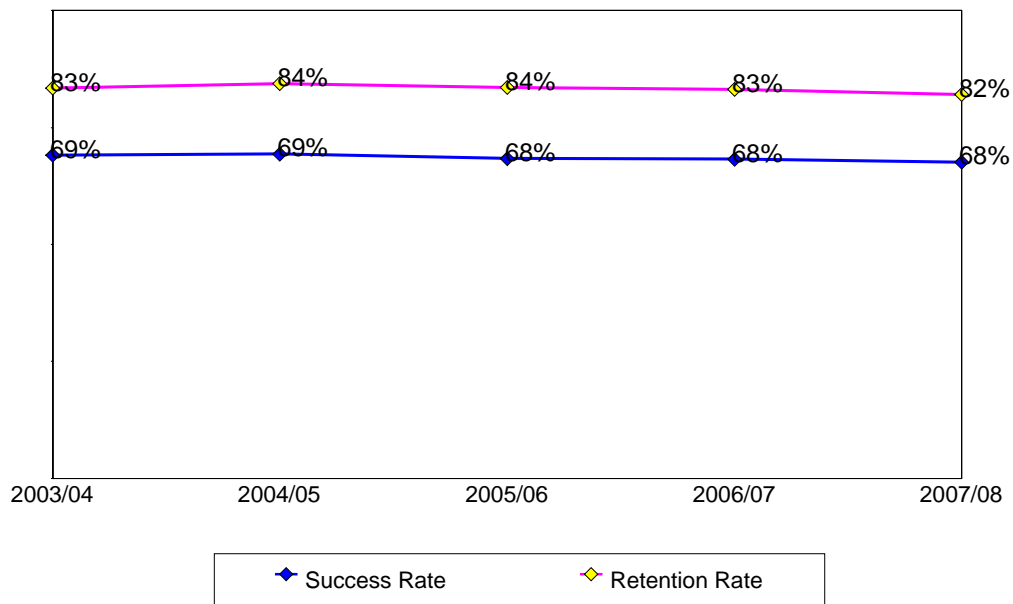
This report contains success and retention rates by various demographic segments. Annual data are an aggregate of the fall and spring semesters. The following parameters have been applied:

- Success Counts: Number of students with A,B,C,CR grades.
- Success Rate: The percentage of students who complete a course with a grade of A,B,C,CR out of total enrollments.
- Retention Counts: Number of students with A,B,C,D,F,CR,NC, I grades.
- Retention Rate: The percentage of students who complete a course with a grade of A,B,C,D,F,CR,NC, I out of total headcount.

Annual Success and Retention

	Head Count	Success Count	Success Rate	Retention Count	Retention Rate
2003/04	42,538	29,379	69%	35,482	83%
2004/05	41,424	28,718	69%	34,937	84%
2005/06	40,324	27,571	68%	33,682	84%
2006/07	41,769	28,493	68%	34,716	83%
2007/08	44,641	30,195	68%	36,623	82%
Change from 2006/07 to 2007/08	2,872	1,702	-1%	1,907	-1%
Totals & Averages	210,696	144,356	69%	175,440	83%

Annual (Fall/Spring) Success and Retention Rates



Source: SMCCCD Data Warehouse

Success and Retention By Term

	Headcount	Success Count	Success Rate	Retention Count	Retention Rate
Fall 2003	21,064	14,520	69%	17,454	83%
Fall 2004	20,405	14,127	69%	17,362	85%
Fall 2005	20,108	13,605	68%	16,710	83%
Fall 2006	21,007	14,301	68%	17,518	83%
Fall 2007	21,890	14,760	67%	18,005	82%
Spring 2004	21,474	14,859	69%	18,028	84%
Spring 2005	21,019	14,591	69%	17,575	84%
Spring 2006	20,216	13,966	69%	16,972	84%
Spring 2007	20,762	14,192	68%	17,198	83%
Spring 2008	22,751	15,435	68%	18,618	82%

Grade Distribution

	A		B		C		F		D		CR		NC		W	
Fall 2003	3,601	26%	3,053	21%	2,230	14%	1,129	7%	786	4%	1,395	7%	538	3%	2,485	17%
Fall 2004	3,483	26%	2,941	20%	2,264	15%	1,308	9%	794	5%	1,289	8%	470	3%	2,137	15%
Fall 2005	3,224	25%	2,888	20%	2,274	15%	1,278	9%	798	5%	1,292	7%	448	3%	2,330	17%
Fall 2006	3,380	25%	2,776	19%	2,286	15%	1,360	9%	838	5%	1,734	9%	330	2%	2,345	17%
Fall 2007	3,428	25%	2,906	18%	2,334	15%	1,238	8%	872	5%	1,728	9%	384	2%	2,613	18%
Spring 2004	3,637	26%	3,105	21%	2,274	14%	1,302	8%	781	4%	1,422	7%	483	2%	2,393	16%
Spring 2005	3,566	26%	2,972	20%	2,144	14%	1,222	8%	821	5%	1,578	9%	415	2%	2,350	17%
Spring 2006	3,362	25%	2,827	20%	2,134	15%	1,207	9%	760	4%	1,579	9%	429	2%	2,200	16%
Spring 2007	3,410	25%	2,687	17%	2,126	14%	1,218	8%	756	4%	2,021	12%	319	2%	2,395	17%
Spring 2008	3,620	24%	3,044	18%	2,408	14%	1,325	8%	813	4%	2,069	11%	250	1%	2,647	18%

Source: SMCCCD Data Warehouse

Success and Retention by Ethnicity

		Headcount	Success Count	Success Rate	Retention Count	Retention Rate
2003/04	African American	1,650	863	52%	1,269	77%
	Asian	11,616	8,302	71%	9,710	84%
	Filipino	8,095	5,397	67%	6,690	83%
	Hispanic	8,311	5,313	64%	6,760	81%
	Native American	189	127	67%	151	80%
	Other	1,303	873	67%	1,079	83%
	White	10,081	7,624	76%	8,736	87%
	Unreported	1,293	880	68%	1,087	84%
	Totals & Averages	42,538	29,379	69%	35,482	83%
2004/05	African American	1,615	859	53%	1,291	80%
	Asian	11,300	8,100	72%	9,550	85%
	Filipino	7,903	5,360	68%	6,623	84%
	Hispanic	8,061	5,245	65%	6,690	83%
	Native American	170	113	66%	140	82%
	Other	1,201	826	69%	1,004	84%
	White	9,632	7,212	75%	8,411	87%
	Unreported	1,542	1,003	65%	1,228	80%
	Totals & Averages	41,424	28,718	69%	34,937	84%
2005/06	African American	1,532	848	55%	1,209	79%
	Asian	10,906	7,628	70%	9,118	84%
	Filipino	7,543	4,935	65%	6,143	81%
	Hispanic	7,771	5,076	65%	6,466	83%
	Native American	206	127	62%	166	81%
	Other	1,262	881	70%	1,087	86%
	White	8,970	6,601	74%	7,709	86%
	Unreported	2,134	1,475	69%	1,784	84%
	Totals & Averages	40,324	27,571	68%	33,682	84%
2006/07	African American	1,709	1,010	59%	1,400	82%
	Asian	10,663	7,526	71%	8,894	83%
	Filipino	7,977	5,129	64%	6,387	80%
	Hispanic	8,430	5,427	64%	6,919	82%
	Native American	234	147	63%	197	84%
	Other	1,110	730	66%	901	81%
	White	8,895	6,646	75%	7,709	87%
	Unreported	2,751	1,878	68%	2,309	84%
	Totals & Averages	41,769	28,493	68%	34,716	83%
2007/08	African American	1,863	1,092	59%	1,453	78%
	Asian	11,008	7,731	70%	9,102	83%
	Filipino	8,471	5,470	65%	6,786	80%
	Hispanic	9,271	5,853	63%	7,435	80%
	Native American	224	141	63%	180	80%
	Other	1,120	763	68%	926	83%
	White	9,362	6,932	74%	8,037	86%
	Unreported	3,322	2,213	67%	2,704	81%
	Totals & Averages	44,641	30,195	68%	36,623	82%

Source: SMCCCD Data Warehouse

Success and Retention by Gender

		Headcount	Success Count	Success Rate	Retention Count	Retention Rate
2003/04	Female	22,729	16,047	71%	19,115	84%
	Male	19,488	13,091	67%	16,083	83%
	Unreported	187	140	75%	163	87%
	Totals & Averages	42,404	29,278	69%	35,361	83%
2004/05	Female	22,165	15,784	71%	18,824	85%
	Male	18,887	12,679	67%	15,799	84%
	Unreported	242	173	71%	207	86%
	Totals & Averages	41,294	28,636	69%	34,830	84%
2005/06	Female	21,188	14,932	70%	17,873	84%
	Male	18,571	12,240	66%	15,331	83%
	Unreported	356	253	71%	300	84%
	Totals & Averages	40,115	27,425	68%	33,504	84%
2006/07	Female	21,479	14,857	69%	17,834	83%
	Male	19,624	13,178	67%	16,305	83%
	Unreported	437	296	68%	376	86%
	Totals & Averages	41,540	28,331	68%	34,515	83%
2007/08	Female	22,822	15,655	69%	18,782	82%
	Male	20,955	13,935	66%	17,115	82%
	Unreported	635	434	68%	524	83%
	Totals & Averages	44,412	30,024	68%	36,421	82%

Success and Retention by Day/Evening Status

		Headcount	Success Count	Success Rate	Retention Count	Retention Rate
2003/04	Day	26,547	17,911	67%	21,873	82%
	Evening	15,991	11,468	72%	13,609	85%
2004/05	Day	25,510	17,180	67%	21,250	83%
	Evening	15,914	11,538	73%	13,687	86%
2005/06	Day	25,456	17,052	67%	21,048	83%
	Evening	14,868	10,519	71%	12,634	85%
2006/07	Day	26,509	17,569	66%	21,755	82%
	Evening	15,258	10,922	72%	12,959	85%
2007/08	Day	28,486	18,670	66%	22,988	81%
	Evening	16,098	11,487	71%	13,590	84%

Source: SMCCCD Data Warehouse

Success and Retention by Age

		Headcount	Success Count	Success Rate	Retention Count	Retention Rate
2003/04	Under 18	628	480	76%	546	87%
	Age 18-22	22,838	14,859	65%	18,616	82%
	Age 23-28	8,487	5,864	69%	7,034	83%
	Age 29-39	5,407	3,995	74%	4,638	86%
	Age 40-49	3,053	2,443	80%	2,724	89%
	Age 50-59	1,562	1,263	81%	1,415	91%
	Age 60+	563	475	84%	509	90%
	Totals & Averages	42,538	29,379	69%	35,482	83%
2004/05	Under 18	487	342	70%	427	88%
	Age 18-22	22,573	14,694	65%	18,566	82%
	Age 23-28	8,436	5,806	69%	7,050	84%
	Age 29-39	5,094	3,900	77%	4,477	88%
	Age 40-49	2,767	2,270	82%	2,491	90%
	Age 50-59	1,478	1,202	81%	1,365	92%
	Age 60+	589	504	86%	561	95%
	Totals & Averages	41,424	28,718	69%	34,937	84%
2005/06	Under 18	603	457	76%	541	90%
	Age 18-22	22,115	14,273	65%	18,138	82%
	Age 23-28	8,106	5,464	67%	6,639	82%
	Age 29-39	4,792	3,565	74%	4,116	86%
	Age 40-49	2,651	2,125	80%	2,384	90%
	Age 50-59	1,456	1,169	80%	1,296	89%
	Age 60+	601	518	86%	568	95%
	Totals & Averages	40,324	27,571	68%	33,682	84%
2006/07	Under 18	1,040	829	80%	933	90%
	Age 18-22	23,255	14,933	64%	18,884	81%
	Age 23-28	7,997	5,363	67%	6,515	81%
	Age 29-39	4,628	3,385	73%	3,932	85%
	Age 40-49	2,577	2,092	81%	2,354	91%
	Age 50-59	1,512	1,232	81%	1,372	91%
	Age 60+	760	659	87%	726	96%
	Totals & Averages	41,769	28,493	68%	34,716	83%
2007/08	Under 18	996	767	77%	881	88%
	Age 18-22	24,730	15,805	64%	19,778	80%
	Age 23-28	8,909	5,876	66%	7,168	80%
	Age 29-39	4,927	3,653	74%	4,240	86%
	Age 40-49	2,612	2,060	79%	2,319	89%
	Age 50-59	1,659	1,346	81%	1,498	90%
	Age 60+	808	688	85%	739	91%
	Totals & Averages	44,641	30,195	68%	36,623	82%

Source: SMCCCD Data Warehouse

Success and Retention by Enrollment Status

		Headcount	Success Count	Success Rate	Retention Count	Retention Rate
2003/04	Continuing Student	30,024	21,070	70%	25,080	84%
	Currently K-12	487	402	83%	450	92%
	First-Time Student	3,777	2,298	61%	3,027	80%
	First-Time Transfer Student	3,028	2,101	69%	2,554	84%
	Returning Student	3,824	2,513	66%	3,187	83%
	Returning Transfer Student	1,397	994	71%	1,183	85%
2004/05	Continuing Student	29,957	20,943	70%	25,133	84%
	Currently K-12	302	237	78%	280	93%
	First-Time Student	3,278	1,949	59%	2,753	84%
	First-Time Transfer Student	2,759	2,014	73%	2,382	86%
	Returning Student	3,760	2,592	69%	3,225	86%
	Returning Transfer Student	1,366	981	72%	1,162	85%
2005/06	Continuing Student	28,557	19,791	69%	23,808	83%
	Currently K-12	344	286	83%	326	95%
	First-Time Student	3,942	2,402	61%	3,247	82%
	First-Time Transfer Student	2,554	1,755	69%	2,181	85%
	Returning Student	3,107	2,073	67%	2,586	83%
	Returning Transfer Student	1,804	1,254	70%	1,519	84%
2006/07	Continuing Student	28,531	19,659	69%	23,548	83%
	Currently K-12	880	763	87%	810	92%
	First-Time Student	4,493	2,732	61%	3,764	84%
	First-Time Transfer Student	2,648	1,830	69%	2,219	84%
	Returning Student	3,248	2,170	67%	2,717	84%
	Returning Transfer Student	1,961	1,333	68%	1,651	84%
2007/08	Continuing Student	31,219	21,358	68%	25,546	82%
	Currently K-12	861	697	81%	789	92%
	First-Time Student	3,590	2,149	60%	2,856	80%
	First-Time Transfer Student	3,465	2,325	67%	2,854	82%
	Returning Student	3,235	2,154	67%	2,691	83%
	Returning Transfer Student	2,262	1,508	67%	1,880	83%

Source: SMCCCD Data Warehouse