

## Department Enrollment

### Enrollment by Term

FA03	FA04	FA05	FA06	FA07	SP04	SP05	SP06	SP07	SP08	SU03	SU04	SU05	SU06	SU07
267	303	301	322	330	288	293	326	316	408	129	155	167	157	165

### Enrollment by Gender

	2003/04		2004/05		2005/06		2006/07		2007/08		Change 06/07-07/08	5 Year Row Total & Average	
Female	358	60%	400	61%	405	58%	382	54%	425	53%	11%	1,970	57%
Male	211	38%	240	39%	267	40%	291	44%	312	44%	7%	1,321	42%
Unreported	7	1%	3	0%	14	2%	11	2%	21	2%	91%	56	2%
<b>Column Total</b>	<b>576</b>	<b>100%</b>	<b>643</b>	<b>100%</b>	<b>686</b>	<b>100%</b>	<b>684</b>	<b>100%</b>	<b>758</b>	<b>100%</b>	<b>11%</b>	<b>3,347</b>	<b>100%</b>

### Enrollment by Ethnicity

	2003/04		2004/05		2005/06		2006/07		2007/08		Change 06/07-07/08	5 Year Row Total & Average	
African American	7	1%	7	1%	7	1%	16	2%	17	2%	6%	54	1%
Asian	280	41%	264	35%	286	36%	278	35%	302	35%	9%	1410	36%
Filipino	172	26%	190	26%	211	27%	215	27%	208	23%	-3%	996	26%
Hispanic	90	13%	85	11%	88	10%	102	12%	128	13%	25%	493	12%
Native American			3	0%			1	0%	3	0%	200%	7	0%
Other	19	3%	29	4%	36	5%	18	2%	19	2%	6%	121	3%
White	97	13%	152	19%	121	15%	123	15%	160	18%	30%	653	16%
Unreported	19	3%	21	3%	45	6%	42	5%	66	7%	57%	193	5%
<b>Column Total</b>	<b>684</b>	<b>100%</b>	<b>751</b>	<b>100%</b>	<b>794</b>	<b>100%</b>	<b>795</b>	<b>100%</b>	<b>903</b>	<b>100%</b>	<b>14%</b>	<b>3927</b>	<b>100%</b>

### Enrollment by Age

	2003/04		2004/05		2005/06		2006/07		2007/08		Change 06/07-07/08	5 Year Row Total & Average	
Under 18	25	4%	27	5%	49	7%	33	5%	29	4%	-12%	163	5%
Age 18-22	309	56%	336	57%	374	56%	369	57%	436	61%	18%	1,824	58%
Age 23-28	148	27%	172	28%	170	25%	179	26%	184	21%	3%	853	25%
Age 29-39	70	10%	79	8%	73	9%	77	10%	92	12%	19%	391	10%
Age 40-49	21	2%	25	2%	20	2%	22	2%	21	2%	-5%	109	2%
Age 50-59	8	1%	4	0%	8	1%	6	0%	4	0%	-33%	30	0%
Age 60+			2	0%	1	0%						3	0%
<b>Column Total</b>	<b>581</b>	<b>100%</b>	<b>645</b>	<b>100%</b>	<b>695</b>	<b>100%</b>	<b>686</b>	<b>100%</b>	<b>766</b>	<b>100%</b>	<b>12%</b>	<b>3,373</b>	<b>100%</b>

Source: SMCCCD Data Warehouse

\*Note: Counts and percents are based on census figures for summer, fall and spring except where noted.

\*\*Note: The variations in total numbers each year within the demographic segments are due to changes students make from term to term in reporting their demographic status.

**Enrollment by Status**

	2003/04		2004/05		2005/06		2006/07		2007/08		Change 06/07-07/08	5 Year Row Total & Average	
Continuing	457	78%	496	77%	530	77%	522	76%	562	69%	8%	2,567	75%
Currently K-12	17	3%	23	4%	44	6%	31	4%	22	4%	-29%	137	4%
First-Time	16	3%	16	2%	20	3%	26	4%	24	4%	-8%	102	3%
First-Time Transfer	47	8%	67	10%	55	8%	59	8%	79	14%	34%	307	10%
Returning	31	5%	38	5%	31	4%	38	5%	55	5%	45%	193	5%
Returning Transfer	22	3%	17	2%	29	3%	34	4%	42	4%	24%	144	3%
<b>Column Total</b>	<b>590</b>	<b>100%</b>	<b>657</b>	<b>100%</b>	<b>709</b>	<b>100%</b>	<b>710</b>	<b>100%</b>	<b>784</b>	<b>100%</b>	<b>10%</b>	<b>3,450</b>	<b>100%</b>

**Enrollment by Course-Taking Pattern (Fall and Spring only)**

	2003/04		2004/05		2005/06		2006/07		2007/08		Change 06/07-07/08	5 Year Row Total & Average	
Day	413	77%	456	76%	468	71%	452	70%	553	77%	22%	2,342	74%
Evening	166	23%	194	24%	232	29%	241	29%	214	22%	-11%	1,047	25%
Day and Evening							7	1%	6	1%	-14%	13	0%
<b>Column Total</b>	<b>579</b>	<b>100%</b>	<b>650</b>	<b>100%</b>	<b>700</b>	<b>100%</b>	<b>700</b>	<b>100%</b>	<b>773</b>	<b>100%</b>	<b>10%</b>	<b>3,402</b>	<b>100%</b>

**Enrollment by Educational Goal**

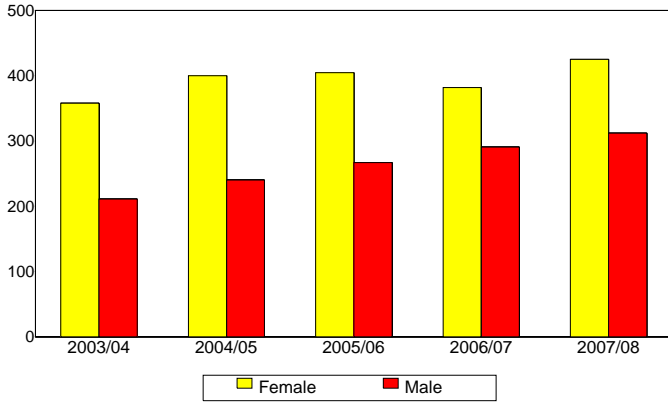
	2003/04		2004/05		2005/06		2006/07		2007/08		Change 06/07-07/08	5 Year Row Total & Average	
Transfer	456	79%	492	77%	518	75%	532	79%	412	53%	-23%	2,410	71%
AA/AS w/o Transfer	44	6%	42	5%	31	4%	32	4%	24	3%	-25%	173	4%
Certificate w/o Transfer	9	1%	8	1%	4	0%	6	1%	8	1%	33%	35	1%
Acquire/Update Job Skills	12	2%	21	2%	30	4%	30	4%	47	7%	57%	140	4%
Educational Development	25	4%	30	5%	27	4%	33	4%	23	3%	-30%	138	4%
Improve Basic Skills	7	1%	8	1%	18	3%	11	1%	16	2%	45%	60	2%
Undecided	41	7%	52	9%	69	10%	55	8%	46	6%	-16%	263	8%
Unreported					2	0%			202	25%		204	7%
<b>Column Total</b>	<b>594</b>	<b>100%</b>	<b>653</b>	<b>100%</b>	<b>699</b>	<b>100%</b>	<b>699</b>	<b>100%</b>	<b>778</b>	<b>100%</b>	<b>11%</b>	<b>3,423</b>	<b>100%</b>

Source: SMCCCD Data Warehouse

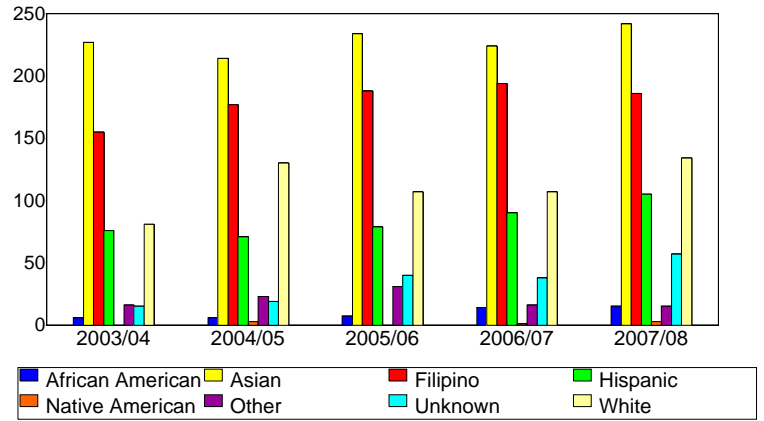
\*Note: Counts and percents are based on census figures for summer, fall and spring except where noted.

\*\*Note: The variations in total numbers each year within the demographic segments are due to changes students make from term to term in reporting their demographic status.

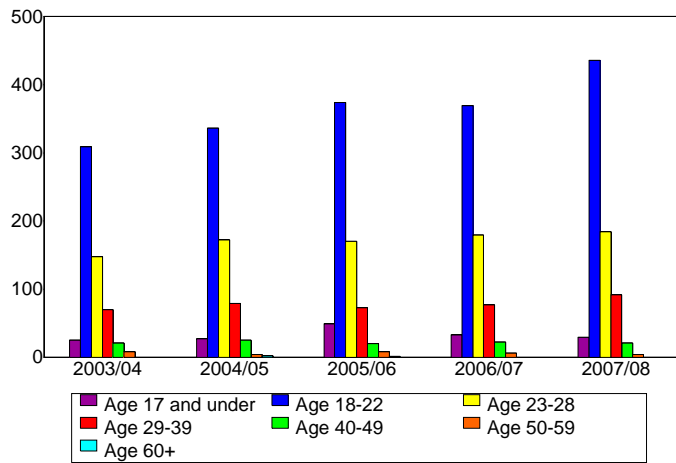
**Enrollment by Gender**



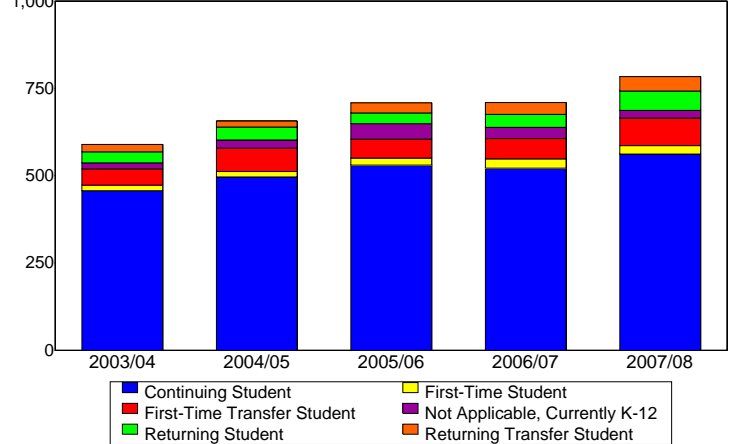
**Enrollment by Ethnicity**



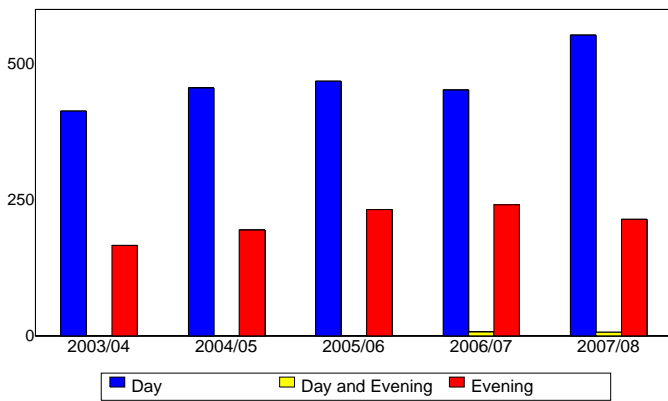
**Enrollment by Student Age**



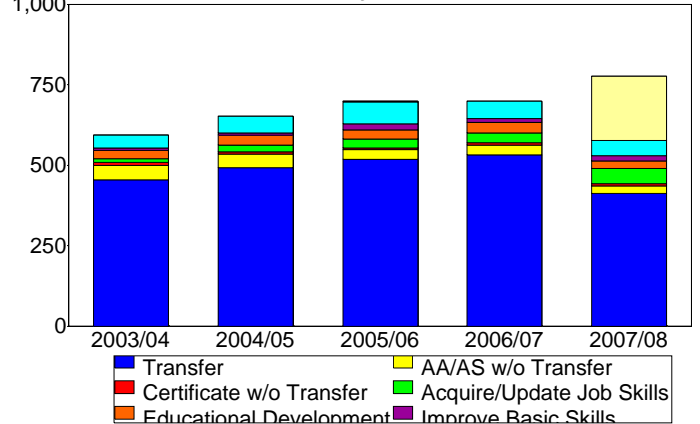
**Enrollment by Enrollment Status**



**Enrollment by Course-Taking Pattern**



**Enrollment by Educational Goal**



Source: SMCCCD Data Warehouse