

Department Success and Retention

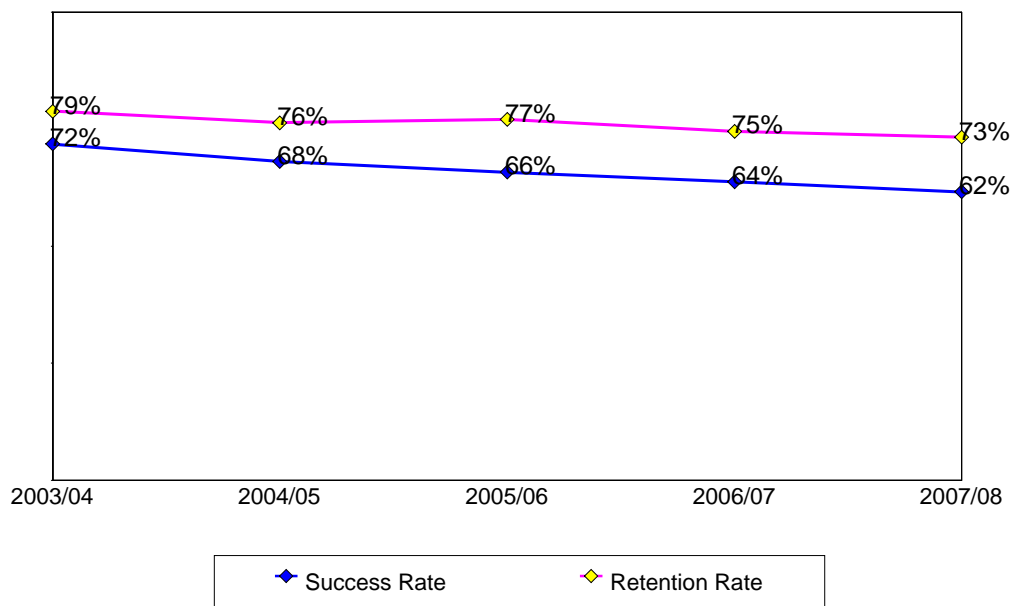
This report contains success and retention rates by various demographic segments and by course. Annual data are an aggregate of the fall and spring semesters. The following parameters have been applied:

- Success Counts: Number of students with A,B,C,CR grades.
- Success Rate: The percentage of students who complete a course with a grade of A,B,C,CR out of total enrollments.
- Retention Counts: Number of students with A,B,C,D,F,CR,NC, I grades.
- Retention Rate: The percentage of students who complete a course with a grade of A,B,C,D,F,CR,NC, I out of total headcount.

Annual Success and Retention

	Headcount	Success Count	Success Rate	Retention Count	Retention Rate
2003/04	615	442	72%	485	79%
2004/05	653	445	68%	499	76%
2005/06	674	444	66%	520	77%
2006/07	677	432	64%	505	75%
2007/08	798	492	62%	585	73%
Change from 2006/07 to 2007/08	121	60	-2%	80	-1%
Totals & Averages	3,417	2,255	66%	2,594	76%

Annual (Fall/Spring) Success and Retention Rates



Source: SMCCCD Data Warehouse

Success and Retention By Term

	Headcount	Success Count	Success Rate	Retention Count	Retention Rate
Fall 2003	311	206	66%	222	71%
Fall 2004	339	230	68%	260	77%
Fall 2005	330	220	67%	260	79%
Fall 2006	350	228	65%	269	77%
Fall 2007	366	243	66%	280	77%
Spring 2004	304	236	78%	263	87%
Spring 2005	314	215	68%	239	76%
Spring 2006	344	224	65%	260	76%
Spring 2007	327	204	62%	236	72%
Spring 2008	432	249	58%	305	71%
Totals & Averages	3,417	2,255	66%	2,594	76%

Grade Distribution

	A		B		C		D		F		CR		NC		W	
Fall 2003	62	23%	89	30%	44	14%	6	2%	10	4%					77	28%
Fall 2004	50	17%	82	24%	88	27%	13	4%	15	6%					75	22%
Fall 2005	53	17%	78	24%	80	25%	22	7%	15	5%					66	22%
Fall 2006	54	17%	76	22%	80	23%	17	5%	23	8%	13	4%			75	23%
Fall 2007	50	16%	79	24%	98	27%	16	4%	19	6%	4	1%	1	0%	79	22%
Spring 2004	59	22%	83	29%	78	28%	12	4%	14	5%					41	13%
Spring 2005	60	20%	72	22%	73	25%	15	5%	8	2%					71	25%
Spring 2006	42	15%	104	30%	66	20%	20	7%	14	4%					84	25%
Spring 2007	56	19%	69	21%	72	22%	21	7%	11	3%					87	28%
Spring 2008	56	15%	97	24%	84	18%	31	8%	22	6%					121	29%

Source: SMCCCD Data Warehouse

Success and Retention by Ethnicity

		Headcount	Success Count	Success Rate	Retention Count	Retention Rate
2003/04	African American	5	4	80%	5	100%
	Asian	250	180	72%	192	77%
	Filipino	154	115	75%	127	82%
	Hispanic	81	46	57%	56	69%
	Other	19	14	74%	16	84%
	White	87	71	82%	75	86%
	Unreported	19	12	63%	14	74%
	Totals & Averages	615	442	72%	485	79%
2004/05	African American	6	4	67%	5	83%
	Asian	241	169	70%	192	80%
	Filipino	154	106	69%	117	76%
	Hispanic	70	45	64%	54	77%
	Native American	3				
	Other	23	9	39%	12	52%
	White	139	100	72%	106	76%
	Unreported	17	12	71%	13	76%
Totals & Averages	653	445	68%	499	76%	
2005/06	African American	5	3	60%	5	100%
	Asian	243	173	71%	200	82%
	Filipino	173	98	57%	123	71%
	Hispanic	78	49	63%	62	79%
	Other	29	19	66%	21	72%
	White	106	74	70%	79	75%
	Unreported	40	28	70%	30	75%
	Totals & Averages	674	444	66%	520	77%
2006/07	African American	12	4	33%	6	50%
	Asian	237	163	69%	183	77%
	Filipino	178	109	61%	126	71%
	Hispanic	89	50	56%	64	72%
	Native American	1			1	100%
	Other	14	11	79%	11	79%
	White	112	74	66%	87	78%
	Unreported	34	21	62%	27	79%
Totals & Averages	677	432	64%	505	75%	
2007/08	African American	14	8	57%	9	64%
	Asian	269	172	64%	204	76%
	Filipino	183	94	51%	126	69%
	Hispanic	114	68	60%	81	71%
	Native American	1	1	100%	1	100%
	Other	15	9	60%	11	73%
	White	149	105	70%	112	75%
	Unreported	53	35	66%	41	77%
Totals & Averages	798	492	62%	585	73%	

Success and Retention by Gender

		Headcount	Success Count	Success Rate	Retention Count	Retention Rate
2003/04	Female	384	275	72%	302	79%
	Male	228	165	72%	181	79%
	Unreported	2	2	100%	2	100%
	Totals & Averages	614	442	72%	485	79%
2004/05	Female	400	278	70%	303	76%
	Male	252	166	66%	195	77%
	Unreported	1	1	100%	1	100%
	Totals & Averages	653	445	68%	499	76%
2005/06	Female	387	266	69%	307	79%
	Male	276	169	61%	204	74%
	Unreported	10	9	90%	9	90%
	Totals & Averages	673	444	66%	520	77%
2006/07	Female	373	250	67%	283	76%
	Male	293	173	59%	212	72%
	Unreported	10	8	80%	9	90%
	Totals & Averages	676	431	64%	504	75%
2007/08	Female	427	287	67%	327	77%
	Male	351	192	55%	241	69%
	Unreported	19	12	63%	16	84%
	Totals & Averages	797	491	62%	584	73%

Success and Retention by Day/Evening Status

		Headcount	Success Count	Success Rate	Retention Count	Retention Rate
2003/04	Day	453	304	67%	342	75%
	Evening	162	138	85%	143	88%
2004/05	Day	465	301	65%	343	74%
	Evening	188	144	77%	156	83%
2005/06	Day	448	263	59%	322	72%
	Evening	226	181	80%	198	88%
2006/07	Day	429	238	55%	295	69%
	Evening	248	194	78%	210	85%
2007/08	Day	582	328	56%	398	68%
	Evening	216	164	76%	187	87%

Source: SMCCCD Data Warehouse

Success and Retention by Age

		Headcount	Success Count	Success Rate	Retention Count	Retention Rate
2003/04	Under 18	10	9	90%	9	90%
	Age 18-22	338	231	68%	252	75%
	Age 23-28	165	117	71%	135	82%
	Age 29-39	75	60	80%	63	84%
	Age 40-49	21	20	95%	20	95%
	Age 50-59	6	5	83%	6	100%
	Totals & Averages	615	442	72%	485	79%
2004/05	Under 18	4	4	100%	4	100%
	Age 18-22	365	239	65%	274	75%
	Age 23-28	182	130	71%	142	78%
	Age 29-39	74	54	73%	59	80%
	Age 40-49	21	15	71%	15	71%
	Age 50-59	5	2	40%	4	80%
	Age 60+	2	1	50%	1	50%
Totals & Averages	653	445	68%	499	76%	
2005/06	Under 18	11	6	55%	7	64%
	Age 18-22	379	229	60%	273	72%
	Age 23-28	173	123	71%	145	84%
	Age 29-39	79	58	73%	67	85%
	Age 40-49	24	22	92%	22	92%
	Age 50-59	7	5	71%	5	71%
	Age 60+	1	1	100%	1	100%
Totals & Averages	674	444	66%	520	77%	
2006/07	Under 18	6	3	50%	3	50%
	Age 18-22	377	220	58%	268	71%
	Age 23-28	186	127	68%	147	79%
	Age 29-39	79	59	75%	64	81%
	Age 40-49	23	18	78%	18	78%
	Age 50-59	6	5	83%	5	83%
	Totals & Averages	677	432	64%	505	75%
2007/08	Under 18	8	7	88%	8	100%
	Age 18-22	467	263	56%	328	70%
	Age 23-28	198	128	65%	151	76%
	Age 29-39	97	73	75%	77	79%
	Age 40-49	24	18	75%	18	75%
	Age 50-59	4	3	75%	3	75%
	Totals & Averages	798	492	62%	585	73%

Source: SMCCCD Data Warehouse

Success and Retention by Enrollment Status

		Headcount	Success Count	Success Rate	Retention Count	Retention Rate
2003/04	Continuing Student	530	381	72%	420	79%
	Currently K-12	2	2	100%	2	100%
	First-Time Student	14	9	64%	10	71%
	First-Time Transfer Student	27	19	70%	20	74%
	Returning Student	25	18	72%	18	72%
	Returning Transfer Student	17	13	76%	15	88%
2004/05	Continuing Student	554	372	67%	414	75%
	Currently K-12	3	3	100%	3	100%
	First-Time Student	11	7	64%	9	82%
	First-Time Transfer Student	48	38	79%	43	90%
	Returning Student	26	18	69%	21	81%
	Returning Transfer Student	11	7	64%	9	82%
2005/06	Continuing Student	575	372	65%	436	76%
	Currently K-12	6	6	100%	6	100%
	First-Time Student	16	10	63%	13	81%
	First-Time Transfer Student	34	24	71%	28	82%
	Returning Student	20	16	80%	19	95%
	Returning Transfer Student	23	16	70%	18	78%
2006/07	Continuing Student	558	351	63%	410	73%
	Currently K-12	2	1	50%	2	100%
	First-Time Student	26	13	50%	18	69%
	First-Time Transfer Student	36	28	78%	33	92%
	Returning Student	28	19	68%	22	79%
	Returning Transfer Student	27	20	74%	20	74%
2007/08	Continuing Student	641	385	60%	456	71%
	Currently K-12	2	2	100%	2	100%
	First-Time Student	23	14	61%	19	83%
	First-Time Transfer Student	57	38	67%	44	77%
	Returning Student	41	27	66%	34	83%
	Returning Transfer Student	34	26	76%	30	88%

Source: SMCCCD Data Warehouse