

Department Success and Retention

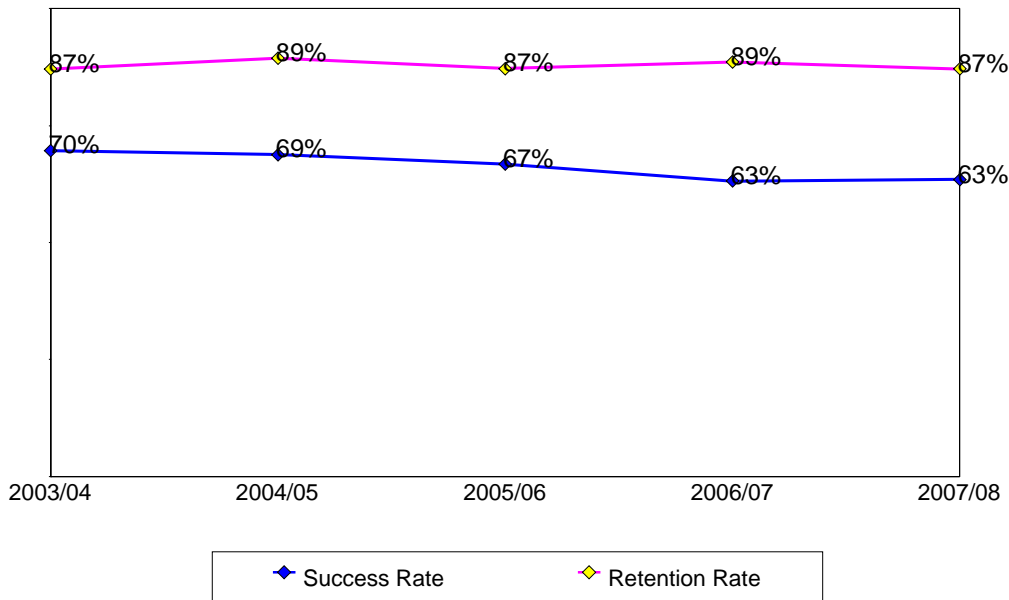
This report contains success and retention rates by various demographic segments and by course. Annual data are an aggregate of the fall and spring semesters. The following parameters have been applied:

- Success Counts: Number of students with A,B,C,CR grades.
- Success Rate: The percentage of students who complete a course with a grade of A,B,C,CR out of total enrollments.
- Retention Counts: Number of students with A,B,C,D,F,CR,NC, I grades.
- Retention Rate: The percentage of students who complete a course with a grade of A,B,C,D,F,CR,NC, I out of total headcount.

Annual Success and Retention

	Headcount	Success Count	Success Rate	Retention Count	Retention Rate
2003/04	2,492	1,736	70%	2,171	87%
2004/05	1,910	1,314	69%	1,708	89%
2005/06	1,714	1,145	67%	1,495	87%
2006/07	1,744	1,101	63%	1,545	89%
2007/08	1,842	1,169	63%	1,605	87%
Change from 2006/07 to 2007/08	98	68	0%	60	-1%
Totals & Averages	9,702	6,465	67%	8,524	88%

Annual (Fall/Spring) Success and Retention Rates



Source: SMCCCD Data Warehouse

Success and Retention By Term

	Headcount	Success Count	Success Rate	Retention Count	Retention Rate
Fall 2003	1,224	861	70%	1,056	86%
Fall 2004	1,005	687	68%	907	90%
Fall 2005	812	535	66%	717	88%
Fall 2006	860	567	66%	780	91%
Fall 2007	872	537	62%	751	86%
Spring 2004	1,268	875	69%	1,115	88%
Spring 2005	905	627	69%	801	89%
Spring 2006	902	610	68%	778	86%
Spring 2007	884	534	60%	765	87%
Spring 2008	970	632	65%	854	88%
Totals & Averages	9,702	6,465	67%	8,524	88%

Grade Distribution

	A		B		C		D		F		CR		NC		W	
Fall 2003	301	43%	123	14%	60	6%	14	1%	44	4%	100	8%	111	10%	147	14%
Fall 2004	248	41%	97	13%	42	5%	7	1%	105	13%	88	11%	68	7%	86	10%
Fall 2005	180	35%	71	10%	45	6%	11	1%	88	13%	98	14%	64	8%	82	12%
Fall 2006	196	33%	65	9%	53	7%	13	2%	98	17%	112	15%	55	6%	74	10%
Fall 2007	185	34%	63	9%	20	3%	9	1%	104	16%	102	16%	51	7%	111	13%
Spring 2004	286	41%	114	12%	49	5%	9	1%	96	11%	129	11%	93	8%	127	12%
Spring 2005	230	39%	87	12%	49	6%	7	1%	73	10%	78	10%	67	9%	91	12%
Spring 2006	209	38%	61	10%	40	5%	9	1%	74	11%	131	14%	60	7%	102	15%
Spring 2007	196	33%	64	8%	38	5%	14	2%	98	19%	98	12%	48	8%	106	13%
Spring 2008	193	30%	76	9%	58	7%	10	1%	103	15%	124	20%	55	6%	101	12%

Source: SMCCCD Data Warehouse

Success and Retention by Ethnicity

		Headcount	Success Count	Success Rate	Retention Count	Retention Rate
2003/04	African American	103	55	53%	83	81%
	Asian	700	522	75%	623	89%
	Filipino	342	229	67%	293	86%
	Hispanic	499	316	63%	423	85%
	Native American	10	8	80%	9	90%
	Other	101	65	64%	87	86%
	White	625	464	74%	555	89%
	Unreported	112	77	69%	98	88%
	Totals & Averages	2,492	1,736	70%	2,171	87%
2004/05	African American	93	42	45%	77	83%
	Asian	552	421	76%	490	89%
	Filipino	239	177	74%	219	92%
	Hispanic	442	300	68%	401	91%
	Native American	4	1	25%	4	100%
	Other	46	29	63%	43	93%
	White	471	302	64%	422	90%
	Unreported	63	42	67%	52	83%
	Totals & Averages	1,910	1,314	69%	1,708	89%
2005/06	African American	79	29	37%	58	73%
	Asian	464	345	74%	414	89%
	Filipino	229	137	60%	196	86%
	Hispanic	334	207	62%	288	86%
	Native American	1			1	100%
	Other	28	18	64%	24	86%
	White	453	319	70%	405	89%
	Unreported	126	90	71%	109	87%
	Totals & Averages	1,714	1,145	67%	1,495	87%
2006/07	African American	82	32	39%	72	88%
	Asian	403	286	71%	365	91%
	Filipino	242	152	63%	213	88%
	Hispanic	384	226	59%	339	88%
	Native American	11	5	45%	7	64%
	Other	57	32	56%	50	88%
	White	433	294	68%	380	88%
	Unreported	132	74	56%	119	90%
	Totals & Averages	1,744	1,101	63%	1,545	89%
2007/08	African American	74	25	34%	57	77%
	Asian	488	365	75%	447	92%
	Filipino	251	146	58%	216	86%
	Hispanic	386	222	58%	324	84%
	Native American	8	4	50%	7	88%
	Other	53	35	66%	44	83%
	White	441	287	65%	394	89%
	Unreported	141	85	60%	116	82%
	Totals & Averages	1,842	1,169	63%	1,605	87%

Source: SMCCCD Data Warehouse

Success and Retention by Gender

		Headcount	Success Count	Success Rate	Retention Count	Retention Rate
2003/04	Female	1,528	1,078	71%	1,340	88%
	Male	941	641	68%	812	86%
	Unreported	15	10	67%	12	80%
	Totals & Averages	2,484	1,729	70%	2,164	87%
2004/05	Female	1,196	835	70%	1,071	90%
	Male	700	470	67%	626	89%
	Unreported	13	9	69%	11	85%
	Totals & Averages	1,909	1,314	69%	1,708	89%
2005/06	Female	1,024	698	68%	893	87%
	Male	649	414	64%	565	87%
	Unreported	25	21	84%	23	92%
	Totals & Averages	1,698	1,133	67%	1,481	87%
2006/07	Female	1,075	689	64%	948	88%
	Male	637	400	63%	567	89%
	Unreported	30	11	37%	29	97%
	Totals & Averages	1,742	1,100	63%	1,544	89%
2007/08	Female	1,186	750	63%	1,023	86%
	Male	617	399	65%	553	90%
	Unreported	34	18	53%	27	79%
	Totals & Averages	1,837	1,167	64%	1,603	87%

Success and Retention by Day/Evening Status

		Headcount	Success Count	Success Rate	Retention Count	Retention Rate
2003/04	Day	1,204	890	74%	1,050	87%
	Evening	1,288	846	66%	1,121	87%
2004/05	Day	1,080	756	70%	964	89%
	Evening	830	558	67%	744	90%
2005/06	Day	981	663	68%	851	87%
	Evening	733	482	66%	644	88%
2006/07	Day	905	563	62%	796	88%
	Evening	839	538	64%	749	89%
2007/08	Day	998	651	65%	886	89%
	Evening	844	518	61%	719	85%

Source: SMCCCD Data Warehouse

Success and Retention by Age

		Headcount	Success Count	Success Rate	Retention Count	Retention Rate
2003/04	Under 18	12	10	83%	11	92%
	Age 18-22	663	414	62%	557	84%
	Age 23-28	614	455	74%	537	87%
	Age 29-39	488	334	68%	426	87%
	Age 40-49	399	291	73%	350	88%
	Age 50-59	257	189	74%	237	92%
	Age 60+	59	43	73%	53	90%
	Totals & Averages	2,492	1,736	70%	2,171	87%
2004/05	Under 18	16	11	69%	14	88%
	Age 18-22	504	311	62%	436	87%
	Age 23-28	519	360	69%	460	89%
	Age 29-39	351	257	73%	319	91%
	Age 40-49	297	226	76%	277	93%
	Age 50-59	181	119	66%	163	90%
	Age 60+	42	30	71%	39	93%
	Totals & Averages	1,910	1,314	69%	1,708	89%
2005/06	Under 18	20	14	70%	18	90%
	Age 18-22	468	292	62%	401	86%
	Age 23-28	418	257	61%	358	86%
	Age 29-39	358	251	70%	310	87%
	Age 40-49	230	162	70%	204	89%
	Age 50-59	181	137	76%	166	92%
	Age 60+	39	32	82%	38	97%
	Totals & Averages	1,714	1,145	67%	1,495	87%
2006/07	Under 18	12	9	75%	10	83%
	Age 18-22	436	252	58%	374	86%
	Age 23-28	381	225	59%	337	88%
	Age 29-39	378	226	60%	333	88%
	Age 40-49	277	195	70%	249	90%
	Age 50-59	201	151	75%	185	92%
	Age 60+	59	43	73%	57	97%
	Totals & Averages	1,744	1,101	63%	1,545	89%
2007/08	Under 18	13	8	62%	10	77%
	Age 18-22	469	287	61%	409	87%
	Age 23-28	433	257	59%	369	85%
	Age 29-39	418	275	66%	364	87%
	Age 40-49	237	148	62%	212	89%
	Age 50-59	183	122	67%	158	86%
	Age 60+	89	72	81%	83	93%
	Totals & Averages	1,842	1,169	63%	1,605	87%

Source: SMCCCD Data Warehouse

Success and Retention by Enrollment Status

		Headcount	Success Count	Success Rate	Retention Count	Retention Rate
2003/04	Continuing Student	1,637	1,160	71%	1,415	86%
	Currently K-12	5	4	80%	5	100%
	First-Time Student	153	83	54%	124	81%
	First-Time Transfer Student	216	141	65%	196	91%
	Returning Student	310	223	72%	282	91%
	Returning Transfer Student	171	125	73%	149	87%
2004/05	Continuing Student	1,212	859	71%	1,098	91%
	Currently K-12	16	11	69%	16	100%
	First-Time Student	101	54	53%	84	83%
	First-Time Transfer Student	158	99	63%	143	91%
	Returning Student	273	184	67%	237	87%
	Returning Transfer Student	150	107	71%	130	87%
2005/06	Continuing Student	1,055	699	66%	904	86%
	Currently K-12	5	4	80%	5	100%
	First-Time Student	135	78	58%	116	86%
	First-Time Transfer Student	158	118	75%	147	93%
	Returning Student	223	154	69%	202	91%
	Returning Transfer Student	138	92	67%	121	88%
2006/07	Continuing Student	1,059	670	63%	926	87%
	Currently K-12	14	11	79%	13	93%
	First-Time Student	131	78	60%	125	95%
	First-Time Transfer Student	152	101	66%	136	89%
	Returning Student	212	128	60%	187	88%
	Returning Transfer Student	174	111	64%	156	90%
2007/08	Continuing Student	1,047	671	64%	912	87%
	Currently K-12	8	6	75%	8	100%
	First-Time Student	117	61	52%	104	89%
	First-Time Transfer Student	212	138	65%	189	89%
	Returning Student	231	141	61%	194	84%
	Returning Transfer Student	227	152	67%	198	87%

Source: SMCCCD Data Warehouse

Department Awards Conferred

Awards by Type

	2003/04	2004/05	2005/06	2006/07	2007/08	Total
Associate Degree	16	13	13	12	21	75
Certificate - 30 to less than 60 units				1		1
Certificate - Less than 30 units	41	24	13	13	16	107
Total	57	37	26	26	37	183

Awards by Gender

	2003/04	2004/05	2005/06	2006/07	2007/08	Total
Female	41	29	20	12	30	132
Male	16	8	6	14	7	51

Awards by Ethnicity

	2003/04	2004/05	2005/06	2006/07	2007/08	Total
African American	4					4
Asian	16	13	11	7	11	58
Filipino	4	4	4	3	4	19
Hispanic	17	14	4	7	8	50
Pacific Islander		2			1	3
White	15	3	6	8	6	38
Other		1			4	5
Unreported	1		1	1	3	6

Awards by Age

	2003/04	2004/05	2005/06	2006/07	2007/08	Total
18-22	1	8	10	2	8	29
23-28	26	13	7	8	8	62
29-39	12	9	6	2	7	36
40-49	11	7	2		6	26
50-59	7		1	14	7	29
60+					1	1

Awards by Major

	2003/04	2004/05	2005/06	2006/07	2007/08	Total
Administrative Assistant	9	4	6	6	6	31
Computer Info Specialist	16	13	10	8	11	58
Legal Secretarial	4	3	1	1		9
Medical Transcriber	1				4	5
Office Assistant	14	9	5	4	7	39
Office Information Systems	1			2		3
Web Developer	12	8	4	5	9	38

Source: SMCCCD Data Warehouse