

Department Productivity: By Year and By Term

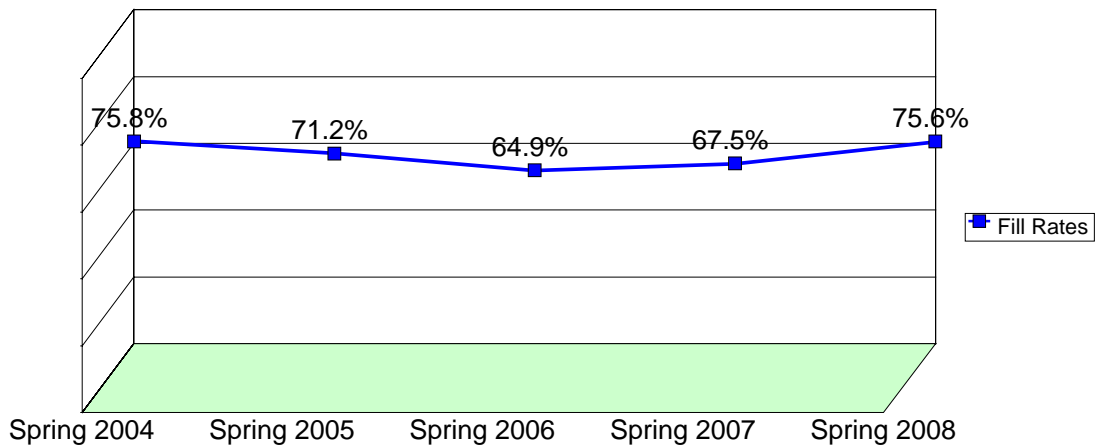
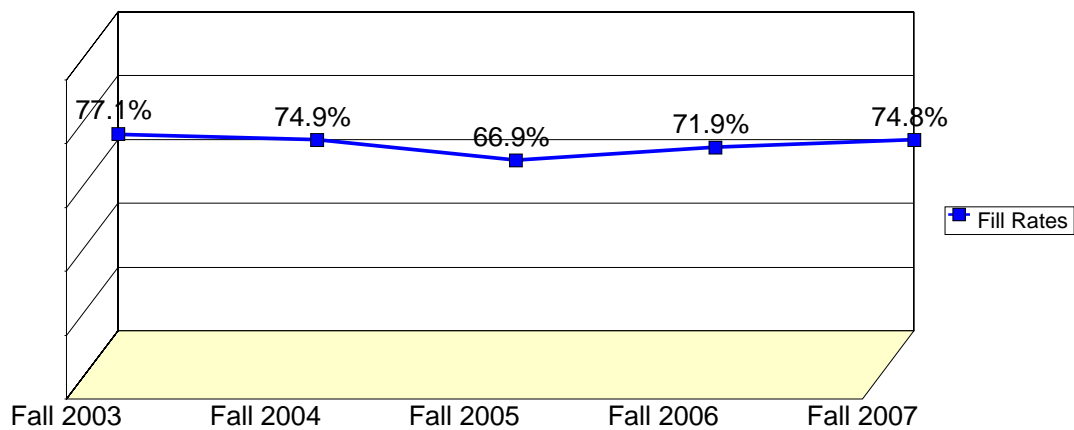
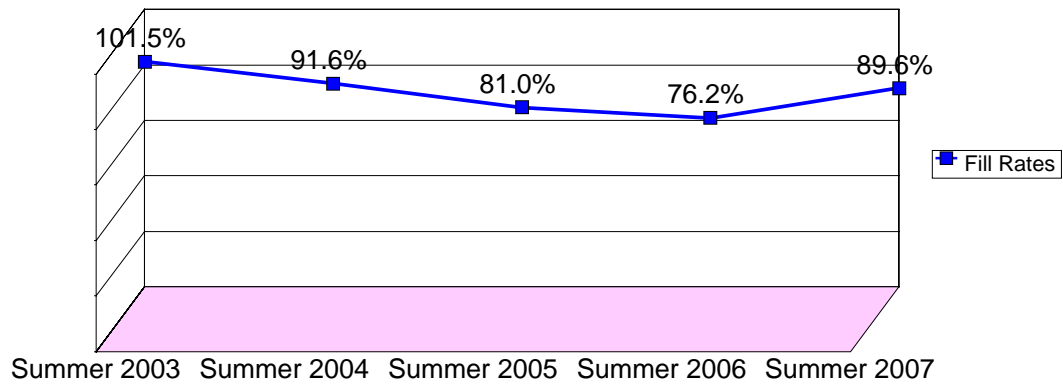
| | Census Headcount | End of Term Headcount | FTEF | FTES | WSCH | Load | Sections | Max Enroll |
|---------|------------------|-----------------------|-------|---------------|-------|------|----------|------------|
| 2003/04 | 1,945 | 1,490 | 10.93 | 219.29 | 6,579 | 602 | 66 | 2,393 |
| 2004/05 | 1,792 | 1,383 | 10.77 | 202.82 | 6,085 | 565 | 63 | 2,278 |
| 2005/06 | 1,728 | 1,298 | 11.10 | 187.26 | 5,618 | 506 | 66 | 2,400 |
| 2006/07 | 1,651 | 1,303 | 11.01 | 183.65 | 5,510 | 500 | 69 | 2,365 |
| 2007/08 | 2,123 | 1,664 | 12.17 | 206.53 | 6,196 | 509 | 78 | 2,813 |

| | Census Headcount | End of Term Headcount | FTEF | FTES | WSCH | Load | Sections | Max Enroll |
|-------------|------------------|-----------------------|------|--------------|-------|------|----------|------------|
| Fall 2003 | 824 | 612 | 4.47 | 90.03 | 2,701 | 605 | 28 | 1,015 |
| Fall 2004 | 709 | 534 | 4.37 | 83.84 | 2,515 | 576 | 25 | 915 |
| Fall 2005 | 676 | 490 | 4.47 | 74.58 | 2,237 | 501 | 27 | 965 |
| Fall 2006 | 759 | 591 | 4.93 | 80.63 | 2,419 | 490 | 33 | 1,100 |
| Fall 2007 | 799 | 610 | 5.00 | 86.54 | 2,596 | 519 | 32 | 1,067 |
| Spring 2004 | 847 | 646 | 5.07 | 90.79 | 2,724 | 538 | 31 | 1,108 |
| Spring 2005 | 831 | 631 | 5.00 | 83.91 | 2,517 | 503 | 31 | 1,088 |
| Spring 2006 | 797 | 608 | 5.13 | 79.31 | 2,379 | 464 | 31 | 1,120 |
| Spring 2007 | 700 | 547 | 4.78 | 77.84 | 2,335 | 489 | 29 | 995 |
| Spring 2008 | 899 | 674 | 5.63 | 89.07 | 2,672 | 474 | 36 | 1,223 |
| Summer 2003 | 274 | 232 | 1.40 | 38.47 | 1,154 | 824 | 7 | 270 |
| Summer 2004 | 252 | 218 | 1.40 | 35.07 | 1,052 | 752 | 7 | 275 |
| Summer 2005 | 255 | 200 | 1.50 | 33.36 | 1,001 | 667 | 8 | 315 |
| Summer 2006 | 192 | 165 | 1.30 | 25.17 | 755 | 581 | 7 | 270 |
| Summer 2007 | 425 | 380 | 1.54 | 30.92 | 927 | 602 | 10 | 523 |

Source: SMCCCD Data Warehouse

Census Headcount: Number of duplicated headcount at final census.
 End of Term Headcount: Number of duplicated headcount at the end of the term.
 FTEF: Total number of full time equivalent faculty assigned.
 FTES: Total number of full time equivalent students enrolled at first census.
 WSCH: Weekly student contact hours generated by census enrollments.
 Load: The ratio of WSCH to FTEF, used to measure productivity.
 Sections: Total number of sections offered per semester.
 Max Enroll: The enrollment capacity or maximum enrollment as defined in curriculum.

Department Fill Rates by Term



Source: SMCCCD Data Warehouse

*Note: For a list of courses included in this report, see Department Productivity: Term by Course. Interdepartmental crosslisted courses are included in fill rate figures only. Crosslisted courses have been combined to calculate a single fill rate.

Fill Rates: The percent a class fills/enrolls based on capacity or enrollment maximum defined in the curriculum (does not include positive attendance, open entry/open exit, or independent study classes).

Department Productivity: Term by Course

| | | | | Census Headcount | End of Term Headcount | FTEF | FTES | WSCH | Load | Sections | Max Enroll |
|------------------|----------------------------|-----|--------------------------------|---------------------|-----------------------------|------|-------|------|-------|----------|---------------|
| Fall 2003 | BUS. | 100 | Introduction to Business | 82 | 59 | 0.40 | 8.20 | 246 | 615 | 2 | 80 |
| | | 101 | Human Relations at Work | 20 | 17 | 0.20 | 2.00 | 60 | 300 | 1 | 35 |
| | | 103 | Intro. to Bus. Info Systems | 56 | 52 | 0.40 | 11.34 | 340 | 850 | 2 | 80 |
| | | | Intro. to Bus. Info Systems | 34 | 21 | 0.20 | 4.87 | 146 | 731 | 1 | 40 |
| | | 120 | Math Analysis for Business | 73 | 51 | 0.40 | 10.08 | 303 | 756 | 2 | 80 |
| | | | Math Analysis for Business | 27 | 19 | 0.20 | 3.60 | 108 | 540 | 1 | 40 |
| | | 123 | Statistics | 96 | 68 | 0.60 | 11.86 | 356 | 593 | 3 | 120 |
| | | 150 | Small Business Management | 40 | 29 | 0.20 | 4.40 | 132 | 660 | 1 | 40 |
| | | 180 | Fundamentals of Marketing | 31 | 22 | 0.20 | 3.41 | 102 | 511 | 1 | 40 |
| | | 200 | Intro International Business | 63 | 41 | 0.40 | 6.30 | 189 | 473 | 2 | 65 |
| | | 201 | Business Law | 83 | 57 | 0.40 | 8.99 | 270 | 674 | 2 | 80 |
| | | 226 | Global Business Negotiation | 42 | 36 | 0.10 | 2.10 | 63 | 630 | 1 | 40 |
| | | 230 | Intro to Intn'l Marketing | 47 | 35 | 0.10 | 2.28 | 68 | 684 | 2 | 60 |
| | | 243 | Legal Environment of Int'l Bus | 39 | 22 | 0.10 | 1.90 | 57 | 570 | 1 | 40 |
| | | 400 | Business English | 34 | 32 | 0.20 | 3.74 | 112 | 561 | 1 | 40 |
| | | 401 | Business Communications | 29 | 23 | 0.20 | 3.19 | 96 | 479 | 1 | 40 |
| | | 665 | Develop Institutional Leaders | 0 | 0 | 0.00 | 0.00 | 0 | | 1 | 40 |
| | | | North County Leadership | 18 | 18 | 0.10 | 0.82 | 25 | 247 | 1 | 30 |
| | | 670 | Business Work Experience | 9 | 9 | 0.07 | 0.83 | 25 | 375 | 1 | 20 |
| | | 690 | Special Projects | 1 | 1 | 0.00 | 0.10 | 3 | #INF | 1 | 5 |
| Fall 2004 | BUS. | 100 | Introduction to Business | 73 | 66 | 0.40 | 7.30 | 219 | 548 | 2 | 80 |
| | | 101 | Human Relations at Work | 31 | 27 | 0.20 | 3.10 | 93 | 465 | 1 | 40 |
| | | 103 | Intro. to Bus. Info Systems | 63 | 52 | 0.40 | 13.20 | 396 | 990 | 2 | 80 |
| | | | Intro. to Bus. Info Systems | 23 | 20 | 0.20 | 3.30 | 99 | 495 | 1 | 40 |
| | | 120 | Math Analysis for Business | 60 | 41 | 0.40 | 8.25 | 248 | 619 | 2 | 80 |
| | | | Math Analysis for Business | 33 | 28 | 0.20 | 4.40 | 132 | 660 | 1 | 40 |
| | | 123 | Statistics | 85 | 51 | 0.60 | 10.43 | 313 | 521 | 3 | 120 |
| | | 150 | Small Business Management | 24 | 20 | 0.20 | 2.64 | 79 | 396 | 1 | 40 |
| | | 180 | Fundamentals of Marketing | 28 | 20 | 0.20 | 3.08 | 92 | 462 | 1 | 40 |
| | | 200 | Intro International Business | 24 | 18 | 0.20 | 2.40 | 72 | 360 | 1 | 30 |
| | | 201 | Business Law | 67 | 48 | 0.40 | 7.06 | 212 | 530 | 2 | 80 |
| | | 226 | Global Business Negotiation | 35 | 19 | 0.10 | 1.65 | 50 | 495 | 1 | 40 |
| | | 230 | Intro to Intn'l Marketing | 34 | 19 | 0.10 | 1.70 | 51 | 510 | 1 | 35 |
| | | 243 | Legal Environment of Int'l Bus | 35 | 25 | 0.10 | 1.70 | 51 | 510 | 1 | 40 |
| | | 400 | Business English | 30 | 26 | 0.20 | 3.00 | 90 | 450 | 1 | 40 |
| | | 401 | Business Communications | 25 | 21 | 0.20 | 2.50 | 75 | 375 | 1 | 40 |
| | | 670 | Business Work Experience | 11 | 10 | 0.07 | 1.13 | 34 | 510 | 1 | 20 |
| W | BUS. | 443 | Law Office Procedures | 5 | 4 | 0.10 | 1.25 | 38 | 375 | 1 | 30 |
| W | LEGL | 443 | Law Office Procedures | 23 | 19 | 0.10 | 5.75 | 173 | 1,725 | 1 | 30 |
| Fall 2005 | BUS. | 100 | Introduction to Business | 76 | 49 | 0.40 | 7.60 | 228 | 570 | 2 | 80 |
| | | 101 | Human Relations at Work | 16 | 12 | 0.20 | 1.60 | 48 | 240 | 1 | 40 |
| | | 103 | Intro. to Bus. Info Systems | 53 | 41 | 0.40 | 7.10 | 213 | 533 | 2 | 80 |
| | | | Intro. to Bus. Info Systems | 27 | 24 | 0.20 | 3.87 | 116 | 581 | 1 | 40 |
| | | 115 | Business Mathematics | 8 | 6 | 0.20 | 1.33 | 40 | 200 | 1 | 35 |
| 120 | Math Analysis for Business | 72 | 52 | 0.40 | 9.94 | 298 | 746 | 2 | 80 | | |

| | | | Census | End of | FTEF | FTES | WSCH | Load | Sections | Max |
|------------------|------|---------------------------------|-----------|--------|------|-------|------|-------|----------|--------|
| | | | Headcount | Term | | | | | | Enroll |
| | | | 27 | 20 | 0.20 | 3.60 | 108 | 540 | 1 | 40 |
| | | Math Analysis for Business | | | | | | | | |
| | 123 | Statistics | 92 | 52 | 0.60 | 11.40 | 342 | 570 | 3 | 120 |
| | 150 | Small Business Management | 23 | 10 | 0.20 | 2.53 | 76 | 380 | 1 | 35 |
| | 180 | Fundamentals of Marketing | 18 | 13 | 0.20 | 1.98 | 59 | 297 | 1 | 40 |
| | 200 | Intro International Business | 26 | 18 | 0.20 | 2.60 | 78 | 390 | 1 | 30 |
| | 201 | Business Law | 62 | 55 | 0.40 | 6.47 | 194 | 485 | 2 | 80 |
| | 225 | Global E-Commerce | 27 | 17 | 0.10 | 1.35 | 41 | 405 | 1 | 30 |
| | 226 | Global Business Negotiation | 20 | 14 | 0.10 | 0.90 | 27 | 270 | 1 | 40 |
| | 230 | Intro to Intn'l Marketing | 25 | 18 | 0.10 | 1.10 | 33 | 330 | 1 | 35 |
| | 243 | Legal Environment of Int'l Bus | 26 | 21 | 0.10 | 1.30 | 39 | 390 | 1 | 40 |
| | 401 | Business Communications | 22 | 20 | 0.20 | 2.20 | 66 | 330 | 1 | 40 |
| | 665 | North County Leadership | 24 | 23 | 0.00 | 1.14 | 34 | #INF | 1 | 30 |
| | 670 | Business Work Experience | 10 | 8 | 0.07 | 1.07 | 32 | 480 | 1 | 20 |
| W | BUS. | 443 Law Office Procedures | 5 | 3 | 0.10 | 1.25 | 38 | 375 | 1 | 30 |
| W | LEGL | 443 Law Office Procedures | 17 | 14 | 0.10 | 4.25 | 128 | 1,275 | 1 | 30 |
| Fall 2006 | BUS. | 100 Introduction to Business | 66 | 56 | 0.40 | 6.60 | 198 | 495 | 2 | 80 |
| | | 101 Human Relations at Work | 20 | 18 | 0.20 | 2.00 | 60 | 300 | 1 | 40 |
| | | 103 Intro. to Bus. Info Systems | 75 | 60 | 0.40 | 10.38 | 311 | 778 | 2 | 80 |
| | | Intro. to Bus.Info Systems | 23 | 18 | 0.20 | 2.30 | 69 | 345 | 1 | 40 |
| | | 120 Math Analysis for Business | 77 | 61 | 0.40 | 10.66 | 320 | 799 | 2 | 80 |
| | | Math Analysis for Business | 28 | 19 | 0.20 | 3.92 | 118 | 588 | 1 | 40 |
| | 123 | Statistics | 91 | 63 | 0.60 | 11.25 | 338 | 562 | 3 | 120 |
| | 150 | Small Business Management | 26 | 16 | 0.20 | 2.86 | 86 | 429 | 1 | 35 |
| | 200 | Intro International Business | 26 | 17 | 0.20 | 2.60 | 78 | 390 | 1 | 30 |
| | 201 | Business Law | 78 | 56 | 0.40 | 8.16 | 245 | 612 | 2 | 80 |
| | 226 | Global Business Negotiation | 14 | 14 | 0.10 | 0.70 | 21 | 210 | 1 | 40 |
| | 230 | Intro to Intn'l Marketing | 16 | 16 | 0.10 | 0.80 | 24 | 240 | 1 | 35 |
| | 240 | Int'l Transportation/Logistics | 12 | 12 | 0.10 | 0.64 | 19 | 192 | 1 | 35 |
| | 243 | Legal Environment of Int'l Bus | 20 | 20 | 0.10 | 1.00 | 30 | 300 | 1 | 40 |
| | 290 | Intro to Marketing Strategy | 14 | 10 | 0.10 | 0.70 | 21 | 211 | 1 | 30 |
| | 291 | Marketing Tactics | 16 | 10 | 0.10 | 0.80 | 24 | 241 | 1 | 30 |
| | 400 | Business English | 17 | 13 | 0.20 | 1.70 | 51 | 255 | 1 | 40 |
| | 486 | Medical Transcription | 11 | 7 | 0.17 | 2.35 | 70 | 422 | 1 | 30 |
| | 487 | Medical Transcriber Internship | 0 | 0 | 0.00 | 0.00 | 0 | | 1 | 25 |
| | 665 | Invest in/Financial Future | 30 | 20 | 0.07 | 1.13 | 34 | 509 | 1 | 30 |
| | | NSMC Leadership 2006 | 23 | 23 | 0.03 | | | | 1 | 30 |
| | 670 | Business Work Experience | 7 | 6 | 0.07 | 0.78 | 24 | 352 | 1 | 20 |
| | 680 | Intro Medical Office MGMT | 12 | 6 | 0.20 | 1.21 | 36 | 181 | 1 | 30 |
| W | BUS. | 443 Law Office Procedures | 1 | 1 | 0.10 | 0.25 | 8 | 75 | 1 | 30 |
| W | LEGL | 443 Law Office Procedures | 12 | 11 | 0.10 | 3.00 | 90 | 900 | 1 | 30 |
| ZC | BUS. | 485 Medical Terminology | 14 | 12 | 0.10 | 1.54 | 46 | 462 | 1 | 30 |
| | HSCI | 484 Medical Terminology | 30 | 26 | 0.10 | 3.30 | 99 | 990 | 1 | 30 |
| Fall 2007 | BUS. | 100 Introduction to Business | 71 | 52 | 0.40 | 7.10 | 213 | 533 | 2 | 80 |
| | | 101 Human Relations at Work | 28 | 20 | 0.20 | 2.80 | 84 | 420 | 1 | 40 |
| | | 103 Intro. to Bus. Info Systems | 70 | 56 | 0.40 | 9.64 | 289 | 723 | 2 | 80 |
| | | Intro. to Bus.Info Systems | 33 | 29 | 0.20 | 3.30 | 99 | 495 | 1 | 40 |
| | | 120 Math Analysis for Business | 75 | 60 | 0.40 | 10.35 | 311 | 776 | 2 | 80 |
| | | Math Analysis for Business | 40 | 27 | 0.20 | 5.60 | 168 | 840 | 1 | 40 |

| | | Census Headcount | End of Term Headcount | FTEF | FTES | WSCH | Load | Sections | Max Enroll | | |
|------------------------|------|------------------------------------|-----------------------------|------|------|-------|------|----------|---------------|-----|----|
| | 123 | Statistics | 81 | 55 | 0.60 | 10.21 | 306 | 510 | 3 | 120 | |
| | 150 | Small Business Management | 19 | 15 | 0.20 | 2.09 | 63 | 314 | 1 | 35 | |
| | 200 | Intro International Business | 28 | 18 | 0.20 | 2.80 | 84 | 420 | 1 | 30 | |
| | 201 | Business Law | 56 | 49 | 0.40 | 5.86 | 176 | 440 | 2 | 80 | |
| | 205 | Business Ethics | 30 | 18 | 0.20 | 3.00 | 90 | 450 | 1 | 35 | |
| | 226 | Global Business Negotiation | 36 | 26 | 0.10 | 1.70 | 51 | 510 | 1 | 40 | |
| | 230 | Intro to Intn'l Marketing | 28 | 18 | 0.10 | 1.40 | 42 | 420 | 1 | 35 | |
| | 240 | Int'l Logistics/Transportation | 16 | 13 | 0.10 | 0.80 | 24 | 241 | 1 | 35 | |
| | 290 | Intro to Marketing Strategy | 17 | 16 | 0.10 | 0.85 | 26 | 256 | 1 | 30 | |
| | 291 | Marketing Tactics | 20 | 8 | 0.10 | 1.13 | 34 | 339 | 1 | 30 | |
| | 400 | Business English | 27 | 26 | 0.20 | 2.70 | 81 | 405 | 1 | 32 | |
| | 401 | Business Communications | 20 | 19 | 0.20 | 2.20 | 66 | 330 | 1 | 40 | |
| | 476 | Intro to Medical Office Mngmt | 16 | 12 | 0.20 | 1.76 | 53 | 264 | 1 | 30 | |
| | 487 | Medical Transcriber Internship | 2 | 1 | 0.00 | 0.66 | 20 | #INF | 1 | 25 | |
| | 520 | No. San Mateo Co. Leadership | 22 | 21 | 0.10 | 1.05 | 31 | 314 | 1 | 30 | |
| | 670 | Business Work Experience | 2 | 1 | 0.00 | 0.17 | 5 | #INF | 1 | 20 | |
| W | BUS. | 443 Law Office Procedures | 0 | 0 | 0.10 | 0.00 | 0 | 0 | 1 | 30 | |
| W | LEGL | 443 Law Office Procedures | 17 | 13 | 0.10 | 4.42 | 133 | 1,326 | 1 | 30 | |
| ZC | BUS. | 485 Medical Terminology | 19 | 15 | 0.10 | 2.09 | 63 | 627 | 1 | 30 | |
| | HSCI | 484 Medical Terminology | 26 | 22 | 0.10 | 2.86 | 86 | 858 | 1 | 30 | |
| Spring 2004 | BUS. | 100 Introduction To Business | 72 | 53 | 0.40 | 7.20 | 216 | 540 | 2 | 80 | |
| | | 101 Human Relations at Work | 17 | 11 | 0.20 | 1.70 | 51 | 255 | 1 | 40 | |
| | | 103 Intro Bus. Information Sys. | 68 | 63 | 0.40 | 9.07 | 272 | 680 | 2 | 80 | |
| | | Intro. Bus. Information Sys. | 31 | 22 | 0.20 | 4.13 | 124 | 620 | 1 | 40 | |
| | | 107 Dealing with Difficult People | 31 | 21 | 0.07 | 1.17 | 35 | 526 | 1 | 40 | |
| | | 120 Math Analysis For Bus. | 101 | 84 | 0.60 | 13.82 | 415 | 691 | 3 | 120 | |
| | | 123 Statistics | 91 | 56 | 0.60 | 10.90 | 327 | 545 | 3 | 115 | |
| | | 140 Security Investments | 22 | 14 | 0.20 | 2.20 | 66 | 330 | 1 | 40 | |
| | | 150 Small Business Management | 25 | 19 | 0.20 | 2.50 | 75 | 375 | 1 | 40 | |
| | | 153 Planning A Business Startup | 31 | 26 | 0.13 | 1.91 | 57 | 431 | 1 | 35 | |
| | | 181 Personal Power & Leadership | 25 | 23 | 0.10 | 1.26 | 38 | 377 | 1 | 30 | |
| | | 187 Marketing Communications | 26 | 20 | 0.20 | 2.60 | 78 | 390 | 1 | 40 | |
| | | 190 Retailing, E-Commerce & Buying | 19 | 15 | 0.20 | 2.09 | 63 | 314 | 1 | 40 | |
| | | 200 Intro International Business | 29 | 18 | 0.20 | 2.90 | 87 | 435 | 1 | 40 | |
| | | 201 Business Law | 79 | 63 | 0.40 | 8.26 | 248 | 620 | 2 | 80 | |
| | | 210 International Finance | 26 | 18 | 0.10 | 1.19 | 36 | 357 | 1 | 30 | |
| | | 221 Intercultural Bus. Com. | 38 | 22 | 0.10 | 3.91 | 117 | 1,173 | 1 | 40 | |
| | | 279 Import/Export Management | 30 | 22 | 0.10 | 1.54 | 46 | 463 | 1 | 40 | |
| | | 400 Business English | 20 | 18 | 0.20 | 2.67 | 80 | 400 | 1 | 40 | |
| | | 401 Business Communications | 26 | 21 | 0.20 | 2.60 | 78 | 390 | 1 | 40 | |
| | | 670 Business Work Experience | 11 | 11 | 0.07 | 1.20 | 36 | 540 | 1 | 15 | |
| | | 690 Special Projects | 1 | 1 | 0.00 | 0.10 | 3 | #INF | 1 | 3 | |
| | T3 | BUS. | 443 Law Office Procedures | 4 | 3 | 0.10 | 0.84 | 25 | 252 | 1 | 40 |
| | | LEGL | 443 Law Office Procedures | 24 | 22 | 0.10 | 5.04 | 151 | 1,512 | 1 | 40 |
| Spring 2005 | BUS. | 100 Introduction to Business | 27 | 20 | 0.20 | 2.70 | 81 | 405 | 1 | 35 | |
| | | Introduction To Business | 62 | 48 | 0.40 | 6.20 | 186 | 465 | 2 | 80 | |

| | | Census Headcount | End of Term Headcount | FTEF | FTES | WSCH | Load | Sections | Max Enroll |
|------------------------|------------------------------------|---------------------|-----------------------------|------|-------|------|------|----------|---------------|
| 101 | Human Relations at Work | 20 | 16 | 0.20 | 2.00 | 60 | 300 | 1 | 40 |
| 103 | Intro Bus. Information Sys. | 66 | 51 | 0.40 | 8.80 | 264 | 660 | 2 | 80 |
| | Intro. Bus. Information Sys. | 38 | 35 | 0.20 | 3.80 | 114 | 570 | 1 | 40 |
| 107 | Dealing with Difficult People | 30 | 24 | 0.07 | 1.13 | 34 | 509 | 1 | 40 |
| 120 | Math Analysis For Bus. | 111 | 78 | 0.60 | 15.16 | 455 | 758 | 3 | 120 |
| 123 | Statistics | 102 | 70 | 0.60 | 12.33 | 370 | 617 | 3 | 115 |
| 150 | Small Business Management | 22 | 13 | 0.20 | 2.20 | 66 | 330 | 1 | 40 |
| 153 | Planning A Business Startup | 20 | 19 | 0.20 | 1.80 | 54 | 270 | 1 | 35 |
| 181 | Personal Power & Leadership | 22 | 20 | 0.10 | 1.11 | 33 | 332 | 1 | 30 |
| 187 | Marketing Communications | 14 | 11 | 0.20 | 1.40 | 42 | 210 | 1 | 40 |
| 200 | Intro International Business | 23 | 21 | 0.20 | 2.30 | 69 | 345 | 1 | 40 |
| 201 | Business Law | 73 | 62 | 0.40 | 7.63 | 229 | 572 | 2 | 80 |
| 210 | International Finance | 32 | 18 | 0.10 | 1.60 | 48 | 480 | 1 | 30 |
| 221 | Intercultural Bus. Com. | 42 | 23 | 0.10 | 1.95 | 59 | 585 | 1 | 40 |
| 279 | Import/Export Management | 40 | 26 | 0.10 | 1.95 | 59 | 585 | 1 | 40 |
| 400 | Business English | 24 | 20 | 0.20 | 3.20 | 96 | 480 | 1 | 40 |
| 401 | Business Communications | 21 | 20 | 0.20 | 2.10 | 63 | 315 | 1 | 35 |
| 665 | Personal Finance | 22 | 19 | 0.07 | 0.75 | 23 | 339 | 1 | 30 |
| 670 | Business Work Experience | 4 | 3 | 0.07 | 0.43 | 13 | 195 | 1 | 15 |
| 690 | Special Projects | 0 | 0 | 0.00 | | | | 1 | 3 |
| T3 | BUS. 443 Law Office Procedures | 3 | 2 | 0.10 | 0.63 | 19 | 189 | 1 | 40 |
| | LEGL 443 Law Office Procedures | 13 | 12 | 0.10 | 2.73 | 82 | 819 | 1 | 40 |
| Spring 2006 | BUS. 100 Introduction To Business | 63 | 51 | 0.40 | 6.30 | 189 | 473 | 2 | 80 |
| | 101 Human Relations at Work | 24 | 23 | 0.20 | 2.40 | 72 | 360 | 1 | 40 |
| | 103 Intro Bus. Information Sys. | 73 | 68 | 0.40 | 8.40 | 252 | 630 | 2 | 80 |
| | Intro. Bus. Information Sys. | 37 | 32 | 0.20 | 3.70 | 111 | 555 | 1 | 40 |
| | 107 Dealing with Difficult People | 23 | 22 | 0.07 | 0.79 | 24 | 355 | 1 | 40 |
| | 120 Math Analysis For Bus. | 103 | 71 | 0.60 | 14.06 | 422 | 703 | 3 | 120 |
| | 123 Statistics | 99 | 58 | 0.60 | 12.20 | 366 | 610 | 3 | 115 |
| | 150 Small Business Management | 14 | 7 | 0.20 | 1.40 | 42 | 210 | 1 | 40 |
| | 153 Planning A Business Startup | 24 | 18 | 0.20 | 2.16 | 65 | 324 | 1 | 35 |
| | 181 Personal Power & Leadership | 22 | 19 | 0.10 | 1.01 | 30 | 302 | 1 | 30 |
| | 187 Marketing Communications | 23 | 20 | 0.20 | 2.30 | 69 | 345 | 1 | 40 |
| | 190 Retailing, E-Commerce & Buying | 11 | 9 | 0.20 | 1.21 | 36 | 182 | 1 | 40 |
| | 200 Intro International Business | 29 | 22 | 0.20 | 2.90 | 87 | 435 | 1 | 40 |
| | 201 Business Law | 66 | 57 | 0.40 | 6.60 | 198 | 495 | 2 | 80 |
| | 210 International Finance | 24 | 15 | 0.10 | 1.20 | 36 | 360 | 1 | 30 |
| | 221 Intercultural Bus. Com. | 27 | 14 | 0.10 | 1.35 | 41 | 405 | 1 | 40 |
| | 241 Doing Business in Asia | 30 | 21 | 0.10 | 1.50 | 45 | 450 | 1 | 30 |
| | 245 Intro to Customs Brokerage | 9 | 8 | 0.10 | 0.46 | 14 | 139 | 1 | 30 |
| | 279 Import/Export Management | 41 | 29 | 0.10 | 2.05 | 62 | 615 | 1 | 40 |
| | 400 Business English | 26 | 21 | 0.20 | 3.47 | 104 | 520 | 1 | 40 |
| | 401 Business Communications | 11 | 8 | 0.20 | 1.10 | 33 | 165 | 1 | 35 |
| | 670 Business Work Experience | 9 | 7 | 0.07 | 0.87 | 26 | 390 | 1 | 15 |
| T3 | BUS. 443 Law Office Procedures | 1 | 1 | 0.10 | 0.21 | 6 | 63 | 1 | 40 |
| | LEGL 443 Law Office Procedures | 8 | 7 | 0.10 | 1.68 | 50 | 504 | 1 | 40 |
| Spring 2007 | BUS. 100 Introduction To Business | 73 | 59 | 0.40 | 7.65 | 230 | 574 | 2 | 80 |
| | 101 Human Relations at Work | 24 | 20 | 0.20 | 2.40 | 72 | 360 | 1 | 40 |

| | | Census Headcount | End of Term Headcount | FTEF | FTES | WSCH | Load | Sections | Max Enroll | | |
|------------------------|------------------------|--------------------------------|--------------------------------|----------------------------|------|-------|-------|----------|---------------|-----|-----|
| | 103 | Intro Bus. Information Sys. | 62 | 50 | 0.40 | 7.33 | 220 | 550 | 2 | 80 | |
| | | Intro. Bus. Information Sys. | 36 | 26 | 0.20 | 3.60 | 108 | 540 | 1 | 40 | |
| | 107 | Dealing with Difficult People | 19 | 14 | 0.07 | 0.65 | 20 | 293 | 1 | 40 | |
| | 120 | Math Analysis For Bus. | 105 | 81 | 0.60 | 14.38 | 431 | 719 | 3 | 120 | |
| | 123 | Statistics | 93 | 66 | 0.60 | 11.13 | 334 | 557 | 3 | 115 | |
| | 150 | Small Business Management | 17 | 15 | 0.20 | 1.70 | 51 | 255 | 1 | 40 | |
| | 153 | Planning A Business Startup | 19 | 12 | 0.20 | 1.90 | 57 | 285 | 1 | 35 | |
| | 181 | Personal Power & Leadership | 17 | 11 | 0.10 | 0.78 | 23 | 233 | 1 | 30 | |
| | 201 | Business Law | 67 | 56 | 0.40 | 6.70 | 201 | 503 | 2 | 80 | |
| | 245 | Intro to Customs Brokerage | 11 | 9 | 0.10 | 0.57 | 17 | 170 | 1 | 30 | |
| | 279 | Import/Export Management | 12 | 11 | 0.10 | 0.62 | 19 | 185 | 1 | 30 | |
| | 400 | Business English | 19 | 13 | 0.20 | 2.53 | 76 | 380 | 1 | 35 | |
| | 401 | Business Communications | 20 | 14 | 0.20 | 2.00 | 60 | 300 | 1 | 35 | |
| | 486 | Medical Transcription | 11 | 8 | 0.21 | 2.93 | 88 | 413 | 1 | 30 | |
| | 487 | Medical Transcriber Internship | 2 | 1 | 0.00 | 0.53 | 16 | #INF | 1 | 20 | |
| | 670 | Business Work Experience | 26 | 23 | 0.20 | 2.53 | 76 | 380 | 1 | 15 | |
| T3 | BUS. 443 | Law Office Procedures | 4 | 4 | 0.10 | 0.84 | 25 | 252 | 1 | 40 | |
| | LEGL 443 | Law Office Procedures | 7 | 7 | 0.10 | 1.47 | 44 | 441 | 1 | 40 | |
| TT | BUS. 485 | Medical Terminology | 34 | 29 | 0.10 | 3.40 | 102 | 1,020 | 1 | 60 | |
| | HSCI 484 | Medical Terminology | 22 | 18 | 0.10 | 2.20 | 66 | 660 | 1 | 60 | |
| Spring 2008 | BUS. 100 | Introduction to Business | 53 | 40 | 0.40 | 5.30 | 159 | 398 | 2 | 70 | |
| | | Introduction To Business | 70 | 55 | 0.40 | 7.00 | 210 | 525 | 2 | 80 | |
| | | 101 | Human Relations at Work | 17 | 14 | 0.20 | 1.70 | 51 | 255 | 1 | 40 |
| | | 103 | Intro Bus. Information Sys. | 68 | 51 | 0.40 | 7.90 | 237 | 593 | 2 | 80 |
| | | | Intro. Bus. Information Sys. | 40 | 32 | 0.20 | 4.00 | 120 | 600 | 1 | 40 |
| | | 107 | Dealing with Difficult People | 16 | 14 | 0.07 | 0.55 | 16 | 247 | 1 | 40 |
| | | 120 | Math Analysis For Bus. | 110 | 90 | 0.60 | 15.09 | 453 | 754 | 3 | 120 |
| | | 123 | Statistics | 86 | 49 | 0.60 | 10.30 | 309 | 515 | 3 | 115 |
| | | 150 | Small Business Management | 28 | 19 | 0.20 | 2.80 | 84 | 420 | 1 | 40 |
| | | 181 | Personal Power & Leadership | 29 | 25 | 0.10 | 1.33 | 40 | 398 | 1 | 30 |
| | | 200 | Intro International Business | 36 | 23 | 0.20 | 3.60 | 108 | 540 | 1 | 40 |
| | | 201 | Business Law | 72 | 57 | 0.40 | 7.20 | 216 | 540 | 2 | 80 |
| | | 210 | International Finance | 21 | 14 | 0.10 | 1.05 | 32 | 315 | 1 | 30 |
| | | 221 | Intercultural Bus. Com. | 23 | 14 | 0.10 | 1.15 | 35 | 345 | 1 | 40 |
| | | 241 | Doing Business in Asia | 25 | 18 | 0.10 | 1.20 | 36 | 360 | 1 | 30 |
| | | 245 | Intro to Customs Brokerage | 19 | 17 | 0.10 | 0.95 | 29 | 285 | 1 | 30 |
| | | 249 | Intro-Freight Fwd&CustomBroker | 37 | 32 | 0.20 | 3.60 | 108 | 540 | 3 | 85 |
| | | 279 | Import/Export Management | 28 | 19 | 0.10 | 1.44 | 43 | 432 | 1 | 30 |
| | | 400 | Business English | 23 | 19 | 0.20 | 3.07 | 92 | 460 | 1 | 35 |
| | | 401 | Business Communications | 14 | 6 | 0.20 | 1.40 | 42 | 210 | 1 | 35 |
| | | 476 | Intro to Medical Office Mngmt | 16 | 10 | 0.20 | 1.60 | 48 | 240 | 1 | 35 |
| | | 489 | Medical Coding ICD-9 | 12 | 10 | 0.20 | 1.32 | 40 | 198 | 1 | 35 |
| | | 670 | Business Work Experience | 5 | 4 | 0.07 | 0.40 | 12 | 180 | 1 | 15 |
| | SW | BUS. 445 | Law Office Management | 3 | 2 | 0.10 | 0.33 | 10 | 99 | 1 | 35 |
| | TT | BUS. 485 | Medical Terminology | 17 | 14 | 0.10 | 1.70 | 51 | 510 | 1 | 30 |
| | | HSCI 484 | Medical Terminology | 31 | 26 | 0.10 | 3.10 | 93 | 930 | 1 | 30 |
| | Summer 2003 | BUS. 103 | Intro to Bus. Info Systems | 70 | 62 | 0.40 | 9.32 | 280 | 699 | 2 | 70 |
| | | | 120 | Math Analysis for Business | 51 | 35 | 0.20 | 6.12 | 184 | 918 | 1 |

| | | Business Department 2003/04 to 2007/08 | | | | | | | | | |
|------------------------|------|---|--------------------------------|------|------|------|-------|----------|---------------|---|-----|
| | | Census Headcount | End of Term Headcount | FTEF | FTES | WSCH | Load | Sections | Max Enroll | | |
| | | 123 | Statistics | 76 | 67 | 0.40 | 15.24 | 457 | 1,143 | 2 | 80 |
| | | 201 | Business Law | 48 | 41 | 0.20 | 4.86 | 146 | 730 | 1 | 40 |
| | | 401 | Business Communications | 29 | 27 | 0.20 | 2.92 | 87 | 437 | 1 | 40 |
| Summer 2004 | BUS. | 100 | Introduction To Business | 29 | 26 | 0.20 | 2.65 | 80 | 398 | 1 | 35 |
| | | 103 | Intro to Bus. Info Systems | 72 | 68 | 0.40 | 9.50 | 285 | 713 | 2 | 80 |
| | | 120 | Math Analysis for Business | 41 | 29 | 0.20 | 5.18 | 155 | 777 | 1 | 40 |
| | | 123 | Statistics | 75 | 68 | 0.40 | 14.48 | 434 | 1,086 | 2 | 80 |
| | | 201 | Business Law | 35 | 27 | 0.20 | 3.27 | 98 | 490 | 1 | 40 |
| Summer 2005 | BUS. | 100 | Introduction To Business | 32 | 27 | 0.20 | 3.22 | 97 | 483 | 1 | 35 |
| | | 103 | Intro to Bus. Info Systems | 68 | 49 | 0.40 | 9.00 | 270 | 675 | 2 | 80 |
| | | 120 | Math Analysis for Business | 37 | 32 | 0.20 | 4.67 | 140 | 701 | 1 | 40 |
| | | 123 | Statistics | 61 | 48 | 0.40 | 12.15 | 364 | 911 | 2 | 80 |
| | | 201 | Business Law | 36 | 26 | 0.20 | 3.36 | 101 | 504 | 1 | 40 |
| | | 245 | Intro to Customs Brokerage | 21 | 18 | 0.10 | 0.96 | 29 | 288 | 1 | 40 |
| Summer 2006 | BUS. | 100 | Introduction To Business | 25 | 25 | 0.20 | 2.50 | 75 | 375 | 1 | 35 |
| | | 103 | Intro to Bus. Info Systems | 26 | 26 | 0.20 | 3.08 | 92 | 462 | 1 | 40 |
| | | 120 | Math Analysis for Business | 35 | 27 | 0.20 | 4.76 | 143 | 714 | 1 | 40 |
| | | 123 | Statistics | 59 | 52 | 0.40 | 10.90 | 327 | 818 | 2 | 80 |
| | | 201 | Business Law | 34 | 22 | 0.20 | 3.28 | 99 | 493 | 1 | 40 |
| | | 241 | Doing Business in Asia | 13 | 13 | 0.10 | 0.65 | 20 | 195 | 1 | 35 |
| Summer 2007 | BUS. | 100 | Introduction To Business | 32 | 27 | 0.20 | 3.20 | 96 | 480 | 1 | 35 |
| | | 103 | Intro to Bus. Info Systems | 36 | 29 | 0.20 | 4.43 | 133 | 664 | 1 | 40 |
| | | 120 | Math Analysis for Business | 42 | 34 | 0.20 | 5.41 | 162 | 811 | 1 | 40 |
| | | 123 | Statistics | 68 | 55 | 0.40 | 10.86 | 326 | 815 | 2 | 80 |
| | | 201 | Business Law | 33 | 26 | 0.20 | 3.34 | 100 | 502 | 1 | 40 |
| | | 221 | Intercultural Bus. Communicati | 27 | 22 | 0.10 | 2.57 | 77 | 771 | 1 | 30 |
| | | 665S | Poll Worker Academy | 176 | 176 | 0.00 | 0.00 | 0 | | 1 | 250 |
| | | 680S | Study Abroad in China | 10 | 10 | 0.24 | 1.00 | 30 | 125 | 1 | 3 |
| | | 690 | Special Projects | 1 | 1 | 0.00 | 0.10 | 3 | #INF | 1 | 5 |

Source: SMCCCD Data Warehouse

Census Headcount: Number of duplicated headcount at final census.

End of Term Headcount: Number of duplicated headcount at the end of the term.

FTEF: Total number of full time equivalent faculty assigned.

FTES: Total number of full time equivalent students enrolled at first census.

WSCH: Weekly student contact hours generated by census enrollments.

Load: The ratio of WSCH to FTEF, used to measure productivity.

Sections: Total number of sections offered per semester.

Max Enroll: The enrollment capacity or maximum enrollment as defined in curriculum.