

## Department Enrollment

### Enrollment by Term

FA03	FA04	FA05	FA06	FA07	SP04	SP05	SP06	SP07	SP08	SU03	SU04	SU05	SU06	SU07
643	544	536	598	611	682	652	609	565	688	260	243	241	184	401

### Enrollment by Gender

	2003/04		2004/05		2005/06		2006/07		2007/08		Change 06/07-07/08	5 Year Row Total & Average	
Female	745	54%	647	50%	583	49%	557	47%	729	46%	31%	3,261	49%
Male	619	45%	570	49%	586	50%	576	50%	725	50%	26%	3,076	49%
Unreported	11	1%	11	1%	12	1%	32	2%	46	4%	44%	112	2%
<b>Column Total</b>	<b>1,375</b>	<b>100%</b>	<b>1,228</b>	<b>100%</b>	<b>1,181</b>	<b>100%</b>	<b>1,165</b>	<b>100%</b>	<b>1,500</b>	<b>100%</b>	<b>29%</b>	<b>6,449</b>	<b>100%</b>

### Enrollment by Ethnicity

	2003/04		2004/05		2005/06		2006/07		2007/08		Change 06/07-07/08	5 Year Row Total & Average	
African American	52	3%	52	4%	41	3%	40	3%	67	4%	68%	252	4%
Asian	533	36%	501	36%	484	37%	497	38%	482	29%	-3%	2497	35%
Filipino	266	17%	257	18%	216	15%	198	14%	269	15%	36%	1206	16%
Hispanic	279	17%	232	16%	238	17%	214	16%	265	15%	24%	1228	16%
Native American	6	0%	2	0%			3	0%	7	0%	133%	18	0%
Other	46	3%	41	3%	43	3%	37	3%	41	3%	11%	208	3%
White	342	20%	296	19%	291	20%	255	18%	375	19%	47%	1559	19%
Unreported	61	4%	58	4%	73	5%	103	8%	194	15%	88%	489	8%
<b>Column Total</b>	<b>1585</b>	<b>100%</b>	<b>1439</b>	<b>100%</b>	<b>1386</b>	<b>100%</b>	<b>1347</b>	<b>100%</b>	<b>1700</b>	<b>100%</b>	<b>26%</b>	<b>7457</b>	<b>100%</b>

### Enrollment by Age

	2003/04		2004/05		2005/06		2006/07		2007/08		Change 06/07-07/08	5 Year Row Total & Average	
Under 18	7	0%	9	1%	11	1%	24	2%	19	2%	-21%	70	1%
Age 18-22	615	46%	597	51%	549	48%	583	51%	625	45%	7%	2,969	48%
Age 23-28	390	31%	353	30%	340	31%	314	29%	375	26%	19%	1,772	29%
Age 29-39	220	13%	177	11%	163	13%	163	12%	198	12%	21%	921	12%
Age 40-49	109	6%	77	5%	90	5%	65	4%	91	5%	40%	432	5%
Age 50-59	39	3%	23	2%	25	1%	21	1%	76	4%	262%	184	2%
Age 60+	5	0%	6	0%	10	1%	6	0%	128	7%	2,033%	155	2%
<b>Column Total</b>	<b>1,385</b>	<b>100%</b>	<b>1,242</b>	<b>100%</b>	<b>1,188</b>	<b>100%</b>	<b>1,176</b>	<b>100%</b>	<b>1,512</b>	<b>100%</b>	<b>29%</b>	<b>6,503</b>	<b>100%</b>

Source: SMCCCD Data Warehouse

\*Note: Counts and percents are based on census figures for summer, fall and spring except where noted.

\*\*Note: The variations in total numbers each year within the demographic segments are due to changes students make from term to term in reporting their demographic status.

**Enrollment by Status**

	2003/04		2004/05		2005/06		2006/07		2007/08		Change 05/06-06/07	5 Year Row Total & Average	
Continuing	942	69%	848	71%	815	72%	787	69%	858	55%	9%	4,250	66%
Currently K-12	9	1%	7	0%	5	0%	9	1%	12	1%	33%	42	1%
First-Time	67	5%	61	5%	51	4%	71	6%	145	14%	104%	395	7%
First-Time Transfer	151	12%	119	9%	126	11%	102	10%	184	17%	80%	682	12%
Returning	172	10%	164	10%	125	8%	127	9%	207	8%	63%	795	9%
Returning Transfer	73	4%	64	4%	87	5%	96	6%	138	5%	44%	458	5%
<b>Column Total</b>	<b>1,414</b>	<b>100%</b>	<b>1,263</b>	<b>100%</b>	<b>1,209</b>	<b>100%</b>	<b>1,192</b>	<b>100%</b>	<b>1,544</b>	<b>100%</b>	<b>30%</b>	<b>6,622</b>	<b>100%</b>

**Enrollment by Course-Taking Pattern (Fall and Spring only)**

	2003/04		2004/05		2005/06		2006/07		2007/08		Change 06/07-07/08	5 Year Row Total & Average	
Day	501	34%	483	39%	483	39%	467	38%	720	45%	54%	2,654	39%
Evening	854	59%	731	54%	665	52%	695	57%	775	50%	12%	3,720	54%
Day and Evening	97	7%	85	6%	112	9%	76	5%	80	5%	5%	450	6%
<b>Column Total</b>	<b>1,452</b>	<b>100%</b>	<b>1,299</b>	<b>100%</b>	<b>1,260</b>	<b>100%</b>	<b>1,238</b>	<b>100%</b>	<b>1,575</b>	<b>100%</b>	<b>27%</b>	<b>6,824</b>	<b>100%</b>

**Enrollment by Educational Goal**

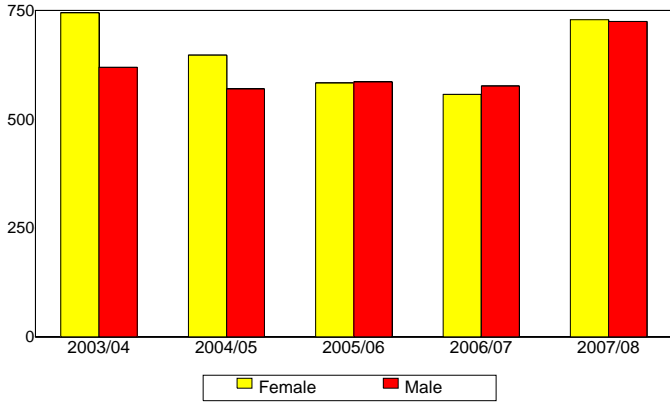
	2003/04		2004/05		2005/06		2006/07		2007/08		Change 06/07-07/08	5 Year Row Total & Average	
Transfer	938	68%	852	70%	800	69%	838	72%	629	42%	-25%	4,057	62%
AA/AS w/o Transfer	94	7%	67	5%	71	6%	45	3%	62	4%	38%	339	5%
Certificate w/o Transfer	57	4%	43	4%	26	2%	18	2%	35	3%	94%	179	3%
Acquire/Update Job Skills	104	6%	83	6%	105	7%	78	7%	111	8%	42%	481	7%
Educational Development	79	5%	61	4%	92	7%	98	7%	268	15%	173%	598	8%
Improve Basic Skills	2	0%	6	0%	6	0%	9	1%	30	2%	233%	53	1%
Undecided	127	9%	133	11%	104	9%	90	9%	94	7%	4%	548	9%
Unreported	1	0%							305	19%		306	5%
<b>Column Total</b>	<b>1,402</b>	<b>100%</b>	<b>1,245</b>	<b>100%</b>	<b>1,204</b>	<b>100%</b>	<b>1,176</b>	<b>100%</b>	<b>1,534</b>	<b>100%</b>	<b>30%</b>	<b>6,561</b>	<b>100%</b>

Source: SMCCCD Data Warehouse

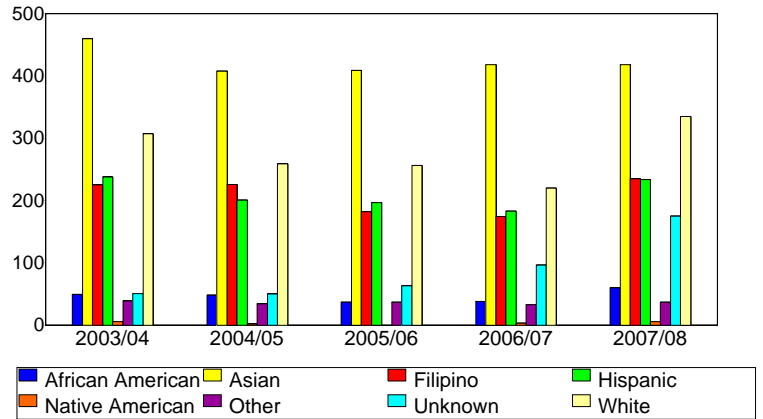
\*Note: Counts and percents are based on census figures for summer, fall and spring except where noted.

\*\*Note: The variations in total numbers each year within the demographic segments are due to changes students make from term to term in reporting their demographic status.

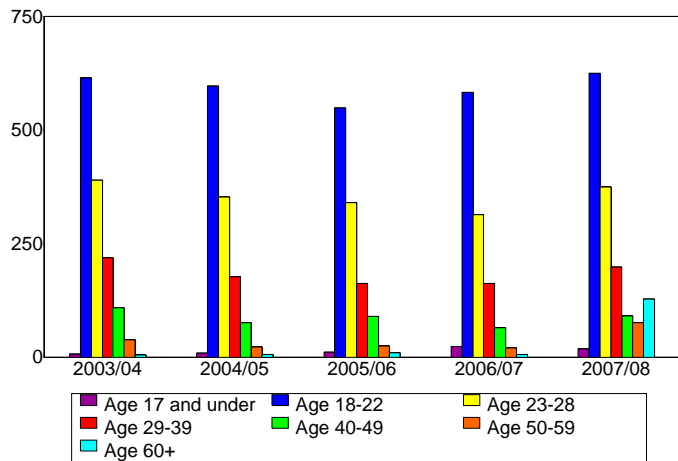
**Enrollment by Gender**



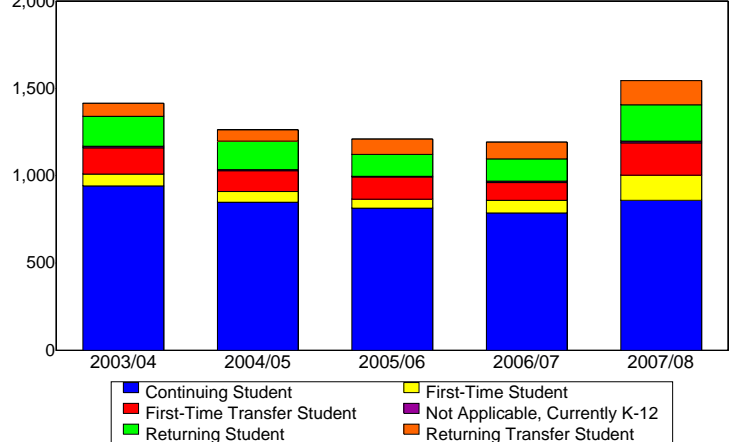
**Enrollment by Ethnicity**



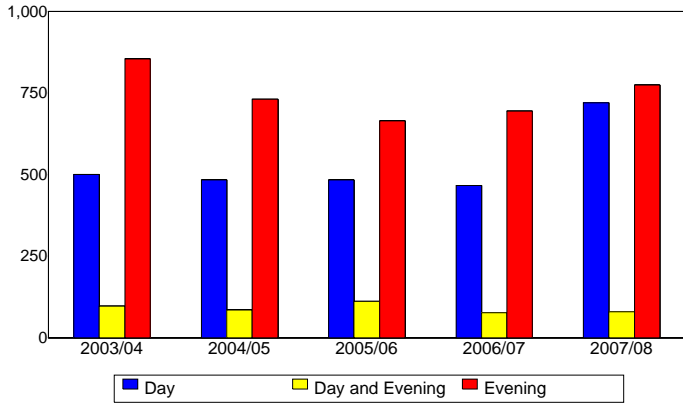
**Enrollment by Student Age**



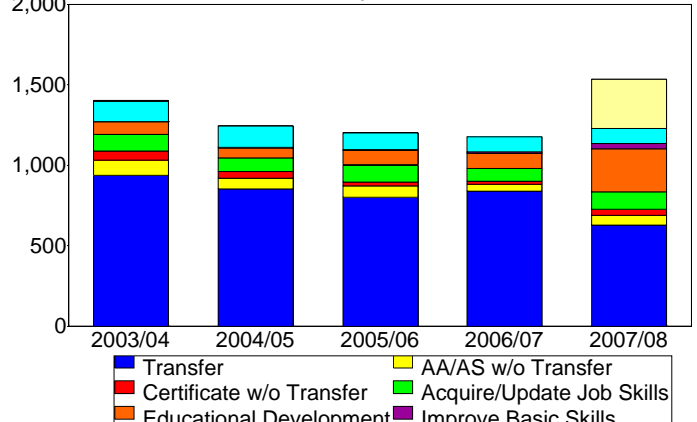
**Enrollment by Enrollment Status**



**Enrollment by Course-Taking Pattern**



**Enrollment by Educational Goal**



Source: SMCCCD Data Warehouse