

Department Success and Retention

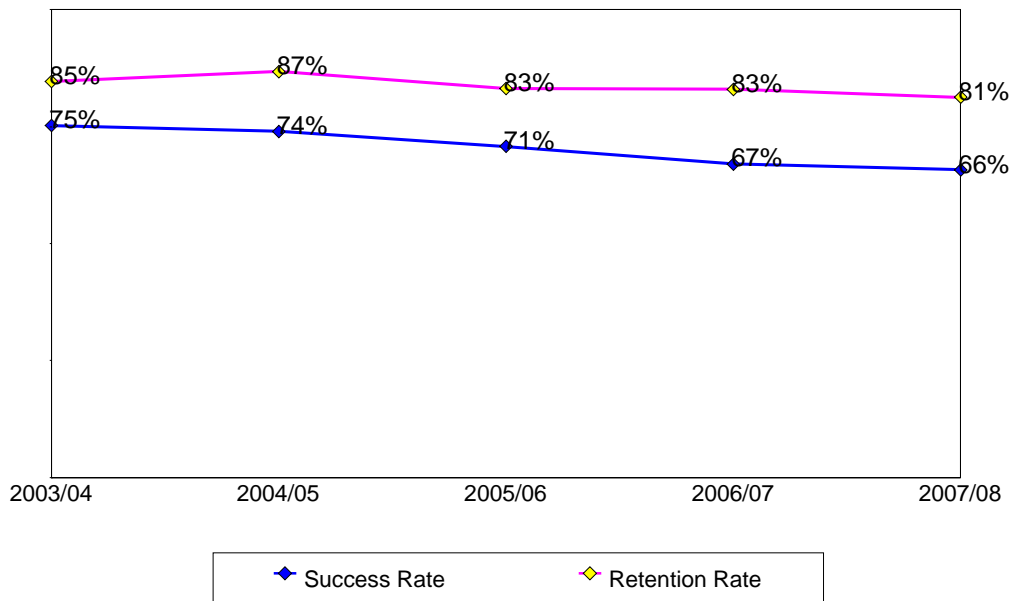
This report contains success and retention rates by various demographic segments and by course. Annual data are an aggregate of the fall and spring semesters. The following parameters have been applied:

- Success Counts: Number of students with A,B,C,CR grades.
- Success Rate: The percentage of students who complete a course with a grade of A,B,C,CR out of total enrollments.
- Retention Counts: Number of students with A,B,C,D,F,CR,NC, I grades.
- Retention Rate: The percentage of students who complete a course with a grade of A,B,C,D,F,CR,NC, I out of total headcount.

Annual Success and Retention

	Headcount	Success Count	Success Rate	Retention Count	Retention Rate
2003/04	1,748	1,315	75%	1,480	85%
2004/05	1,997	1,477	74%	1,733	87%
2005/06	1,973	1,397	71%	1,641	83%
2006/07	1,798	1,205	67%	1,492	83%
2007/08	2,027	1,333	66%	1,648	81%
Change from 2006/07 to 2007/08	229	128	-1%	156	-2%
Totals & Averages	9,543	6,727	70%	7,994	84%

Annual (Fall/Spring) Success and Retention Rates



Source: SMCCCD Data Warehouse

Success and Retention By Term

	Headcount	Success Count	Success Rate	Retention Count	Retention Rate
Fall 2003	866	638	74%	721	83%
Fall 2004	968	722	75%	851	88%
Fall 2005	1,007	715	71%	837	83%
Fall 2006	874	581	66%	714	82%
Fall 2007	1,029	688	67%	844	82%
Spring 2004	882	677	77%	759	86%
Spring 2005	1,029	755	73%	882	86%
Spring 2006	966	682	71%	804	83%
Spring 2007	924	624	68%	778	84%
Spring 2008	998	645	65%	804	81%
Total	9,543	6,727	70%	7,994	84%

Grade Distribution

	A		B		C		D		F		CR		W	
Fall 2003	208	24%	216	25%	197	24%	41	5%	42	5%			143	17%
Fall 2004	217	24%	249	26%	231	25%	57	6%	67	7%			114	12%
Fall 2005	215	23%	253	25%	223	22%	61	6%	60	6%			166	17%
Fall 2006	168	21%	209	23%	190	22%	72	9%	60	7%			158	18%
Fall 2007	209	25%	205	20%	234	22%	71	7%	75	7%	1	0%	183	18%
Spring 2004	208	25%	254	30%	197	22%	38	4%	41	5%			122	14%
Spring 2005	230	23%	293	28%	209	22%	80	8%	47	5%			142	14%
Spring 2006	190	21%	242	25%	219	24%	64	7%	57	7%			156	17%
Spring 2007	203	23%	207	24%	187	20%	60	7%	89	10%			145	16%
Spring 2008	183	20%	228	24%	212	22%	68	7%	82	9%	1	0%	192	19%

Source: SMCCCD Data Warehouse

Success and Retention by Ethnicity

		Headcount	Success Count	Success Rate	Retention Count	Retention Rate
2003/04	African American	48	24	50%	34	71%
	Asian	495	386	78%	424	86%
	Filipino	464	344	74%	396	85%
	Hispanic	246	172	70%	204	83%
	Native American	6	2	33%	2	33%
	Other	55	39	71%	46	84%
	White	377	303	80%	326	86%
	Unreported	57	45	79%	48	84%
	Totals & Averages	1,748	1,315	75%	1,480	85%
2004/05	African American	53	29	55%	44	83%
	Asian	540	409	76%	473	88%
	Filipino	569	419	74%	495	87%
	Hispanic	308	200	65%	255	83%
	Native American	8	6	75%	6	75%
	Other	49	38	78%	43	88%
	White	400	324	81%	359	90%
	Unreported	70	52	74%	58	83%
	Totals & Averages	1,997	1,477	74%	1,733	87%
2005/06	African American	56	31	55%	42	75%
	Asian	500	353	71%	414	83%
	Filipino	581	399	69%	480	83%
	Hispanic	291	201	69%	234	80%
	Native American	6	4	67%	6	100%
	Other	70	55	79%	62	89%
	White	374	283	76%	326	87%
	Unreported	95	71	75%	77	81%
	Totals & Averages	1,973	1,397	71%	1,641	83%
2006/07	African American	46	25	54%	41	89%
	Asian	441	322	73%	370	84%
	Filipino	509	304	60%	405	80%
	Hispanic	251	155	62%	202	80%
	Native American	3	2	67%	3	100%
	Other	50	28	56%	38	76%
	White	379	285	75%	333	88%
	Unreported	119	84	71%	100	84%
	Totals & Averages	1,798	1,205	67%	1,492	83%
2007/08	African American	60	26	43%	45	75%
	Asian	528	377	71%	430	81%
	Filipino	593	350	59%	471	79%
	Hispanic	302	185	61%	238	79%
	Native American	2	1	50%	1	50%
	Other	35	20	57%	28	80%
	White	357	267	75%	306	86%
	Unreported	150	107	71%	129	86%
	Totals & Averages	2,027	1,333	66%	1,648	81%

Source: SMCCCD Data Warehouse

Success and Retention by Gender

		Headcount	Success Count	Success Rate	Retention Count	Retention Rate
2003/04	Female	1,062	815	77%	902	85%
	Male	667	487	73%	564	85%
	Unreported	8	6	75%	6	75%
	Totals & Averages	1,737	1,308	75%	1,472	85%
2004/05	Female	1,256	958	76%	1,098	87%
	Male	718	499	69%	614	86%
	Unreported	16	15	94%	16	100%
	Totals & Averages	1,990	1,472	74%	1,728	87%
2005/06	Female	1,225	884	72%	1,022	83%
	Male	723	490	68%	595	82%
	Unreported	17	15	88%	16	94%
	Totals & Averages	1,965	1,389	71%	1,633	83%
2006/07	Female	1,130	793	70%	949	84%
	Male	646	395	61%	523	81%
	Unreported	15	12	80%	14	93%
	Totals & Averages	1,791	1,200	67%	1,486	83%
2007/08	Female	1,219	815	67%	1,011	83%
	Male	775	492	63%	608	78%
	Unreported	26	21	81%	22	85%
	Totals & Averages	2,020	1,328	66%	1,641	81%

Success and Retention by Day/Evening Status

		Headcount	Success Count	Success Rate	Retention Count	Retention Rate
2003/04	Day	1,207	909	75%	1,023	85%
	Evening	541	406	75%	457	84%
2004/05	Day	1,407	1,028	73%	1,209	86%
	Evening	590	449	76%	524	89%
2005/06	Day	1,408	1,024	73%	1,180	84%
	Evening	565	373	66%	461	82%
2006/07	Day	1,190	775	65%	990	83%
	Evening	608	430	71%	502	83%
2007/08	Day	1,403	882	63%	1,128	80%
	Evening	624	451	72%	520	83%

Source: SMCCCD Data Warehouse

Success and Retention by Age

		Headcount	Success Count	Success Rate	Retention Count	Retention Rate
2003/04	Under 18	43	33	77%	37	86%
	Age 18-22	925	663	72%	767	83%
	Age 23-28	405	300	74%	343	85%
	Age 29-39	243	212	87%	220	91%
	Age 40-49	92	74	80%	80	87%
	Age 50-59	36	29	81%	29	81%
	Age 60+	4	4	100%	4	100%
	Totals & Averages	1,748	1,315	75%	1,480	85%
2004/05	Under 18	16	13	81%	13	81%
	Age 18-22	1,110	777	70%	953	86%
	Age 23-28	473	364	77%	412	87%
	Age 29-39	244	199	82%	221	91%
	Age 40-49	117	92	79%	100	85%
	Age 50-59	31	28	90%	30	97%
	Age 60+	6	4	67%	4	67%
	Totals & Averages	1,997	1,477	74%	1,733	87%
2005/06	Under 18	19	18	95%	19	100%
	Age 18-22	1,078	710	66%	870	81%
	Age 23-28	456	328	72%	378	83%
	Age 29-39	269	218	81%	242	90%
	Age 40-49	107	88	82%	93	87%
	Age 50-59	39	33	85%	35	90%
	Age 60+	5	2	40%	4	80%
	Totals & Averages	1,973	1,397	71%	1,641	83%
2006/07	Under 18	16	12	75%	14	88%
	Age 18-22	933	573	61%	767	82%
	Age 23-28	477	329	69%	391	82%
	Age 29-39	240	187	78%	207	86%
	Age 40-49	92	71	77%	78	85%
	Age 50-59	34	27	79%	29	85%
	Age 60+	6	6	100%	6	100%
	Totals & Averages	1,798	1,205	67%	1,492	83%
2007/08	Under 18	26	17	65%	24	92%
	Age 18-22	1,074	649	60%	846	79%
	Age 23-28	531	366	69%	438	82%
	Age 29-39	251	182	73%	213	85%
	Age 40-49	94	78	83%	81	86%
	Age 50-59	47	37	79%	42	89%
	Age 60+	4	4	100%	4	100%
	Totals & Averages	2,027	1,333	66%	1,648	81%

Source: SMCCCD Data Warehouse

Success and Retention by Enrollment Status

		Headcount	Success Count	Success Rate	Retention Count	Retention Rate
2003/04	Continuing Student	1,368	1,022	75%	1,150	84%
	Currently K-12	30	25	83%	28	93%
	First-Time Student	61	44	72%	53	87%
	First-Time Transfer Student	131	112	85%	120	92%
	Returning Student	97	67	69%	80	82%
	Returning Transfer Student	61	45	74%	49	80%
2004/05	Continuing Student	1,584	1,178	74%	1,371	87%
	Currently K-12	5	4	80%	4	80%
	First-Time Student	97	57	59%	80	82%
	First-Time Transfer Student	145	112	77%	129	89%
	Returning Student	116	85	73%	105	91%
	Returning Transfer Student	50	41	82%	44	88%
2005/06	Continuing Student	1,536	1,085	71%	1,263	82%
	Currently K-12	5	2	40%	4	80%
	First-Time Student	109	68	62%	95	87%
	First-Time Transfer Student	137	109	80%	123	90%
	Returning Student	94	63	67%	75	80%
	Returning Transfer Student	91	70	77%	80	88%
2006/07	Continuing Student	1,378	921	67%	1,136	82%
	Currently K-12	4	2	50%	2	50%
	First-Time Student	83	48	58%	72	87%
	First-Time Transfer Student	145	109	75%	125	86%
	Returning Student	110	69	63%	91	83%
	Returning Transfer Student	78	56	72%	66	85%
2007/08	Continuing Student	1,533	1,011	66%	1,236	81%
	Currently K-12	13	7	54%	10	77%
	First-Time Student	64	38	59%	50	78%
	First-Time Transfer Student	214	155	72%	183	86%
	Returning Student	100	56	56%	80	80%
	Returning Transfer Student	102	65	64%	88	86%

Source: SMCCCD Data Warehouse

Department Awards Conferred

Awards by Type

	2003/04	2004/05	2005/06	2006/07	2007/08	Total
Associate Degree	7	10	11	21	9	58
Certificate - Less than 30 units			27	33	33	93
Total	7	10	38	54	42	151

Awards by Gender

	2003/04	2004/05	2005/06	2006/07	2007/08	Total
Female	5	5	12	31	23	76
Male	2	5	26	23	19	75

Awards by Ethnicity

	2003/04	2004/05	2005/06	2006/07	2007/08	Total
African American	1			2	1	4
Asian	2	1	11	11	21	46
Filipino	2	2	6	11	9	30
Hispanic	1	1	8	8	1	19
Pacific Islander			1	2	2	5
White		5	8	15	8	36
Other	1		2	2		5
Unreported		1	2	3		6

Awards by Age

	2003/04	2004/05	2005/06	2006/07	2007/08	Total
18-22	1	2	7	17	9	36
23-28	6	4	7	8	15	40
29-39		2	6	10	7	25
40-49		1	11	10	6	28
50-59		1	7	8	4	20
60+				1	1	2

Awards by Major

	2003/04	2004/05	2005/06	2006/07	2007/08	Total
Biotechnology		2	2	4		8
Biotechnology Manufacturing			27	33	33	93
Natural Science	7	8	9	17	9	50

Source: SMCCCD Data Warehouse