

## Department Productivity: By Year and By Term

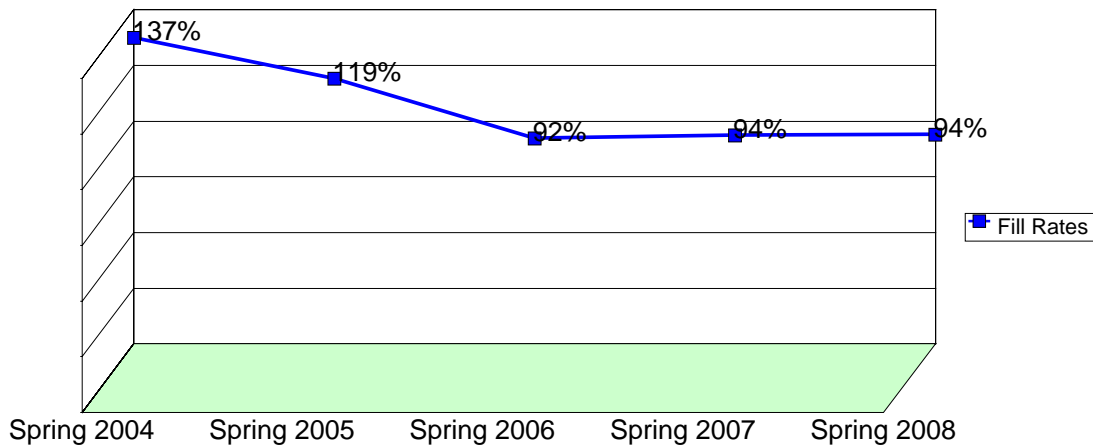
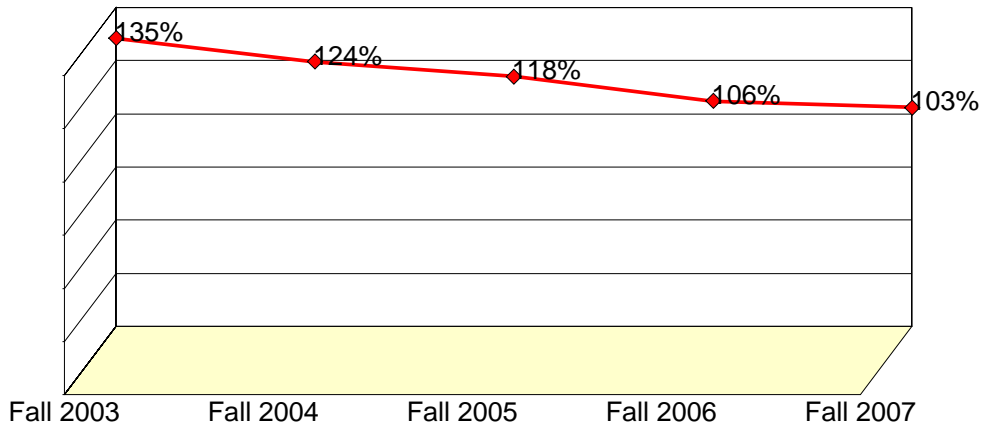
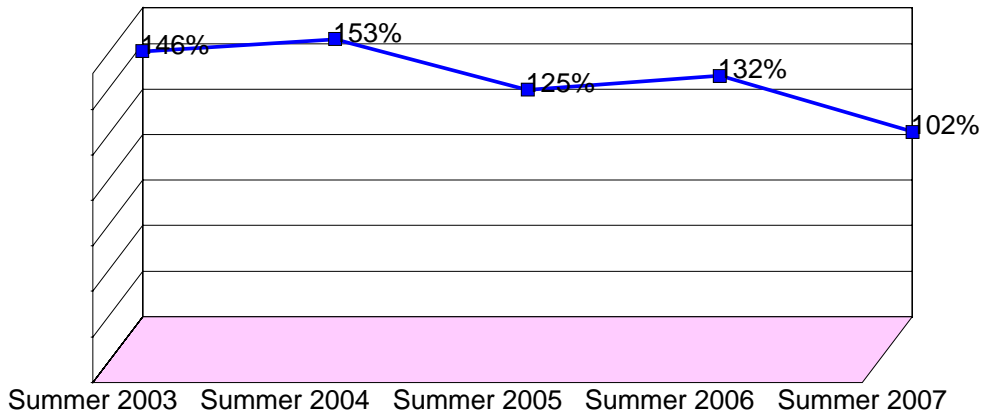
	Census Headcount	End of Term Headcount	FTEF	FTES	WSCH	Load	Sections	Max Enroll
2003/04	1,972	1,875	19.99	<b>322.80</b>	9,684	484	117	1,641
2004/05	2,228	2,100	20.75	<b>344.11</b>	10,323	498	127	2,307
2005/06	1,879	1,695	19.82	<b>282.51</b>	8,475	428	117	2,188
2006/07	1,614	1,539	19.38	<b>306.32</b>	9,190	474	106	2,019
2007/08	1,579	1,508	20.10	<b>297.40</b>	8,922	444	108	1,987

	Census Headcount	End of Term Headcount	FTEF	FTES	WSCH	Load	Sections	Max Enroll
Fall 2003	810	777	9.18	<b>149.37</b>	4,481	488	50	578
Fall 2004	872	834	9.41	<b>166.48</b>	4,994	531	51	883
Fall 2005	786	719	9.32	<b>141.69</b>	4,251	456	50	891
Fall 2006	707	674	9.34	<b>158.72</b>	4,761	510	48	844
Fall 2007	670	628	9.25	<b>144.16</b>	4,325	468	44	765
Spring 2004	915	858	9.94	<b>157.70</b>	4,731	476	56	994
Spring 2005	1,080	1,008	10.25	<b>161.58</b>	4,847	473	62	1,180
Spring 2006	799	709	9.55	<b>124.86</b>	3,746	392	55	1,025
Spring 2007	783	748	9.48	<b>138.40</b>	4,152	438	53	1,068
Spring 2008	659	636	9.39	<b>135.74</b>	4,072	434	48	926
Summer 2003	247	240	0.87	<b>15.74</b>	472	545	11	69
Summer 2004	276	258	1.09	<b>16.06</b>	482	440	14	244
Summer 2005	294	267	0.94	<b>15.96</b>	479	509	12	272
Summer 2006	124	117	0.56	<b>9.20</b>	276	494	5	107
Summer 2007	250	244	1.45	<b>17.50</b>	525	361	16	296

Source: SMCCCD Data Warehouse

Census Headcount: Number of duplicated headcount at final census.  
 End of Term Headcount: Number of duplicated headcount at the end of the term.  
 FTEF: Total number of full time equivalent faculty assigned.  
 FTES: Total number of full time equivalent students enrolled at first census.  
 WSCH: Weekly student contact hours generated by census enrollments.  
 Load: The ratio of WSCH to FTEF, used to measure productivity.  
 Sections: Total number of sections offered per semester.  
 Max Enroll: The enrollment capacity or maximum enrollment as defined in curriculum.

## Department Fill Rates by Term



Source: SMCCCD Data Warehouse

\*Note: For a list of courses included in this report, see Department Productivity: Term by Course. Interdepartmental crosslisted courses are included in fill rate figures only. Crosslisted courses have been combined to calculate a single fill rate.

Fill Rates: The percent a class fills/enrolls based on capacity or enrollment maximum defined in the curriculum (does not include positive attendance, open entry/open exit, or independent study classes).

## Department Productivity: Term by Course

			Census Headcount	End of Term Headcount	FTEF	FTES	WSCH	Load	Sections	Max Enroll
<b>Fall 2003</b>	AUTO 665	2003 Smog check Update	20	20	0.10	0.27	8	82	1	20
		2003 Smog Check Update	97	95	0.11	1.45	43	384	4	0
		Bar '97 Transition	11	11	0.03	0.21	6	210	1	26
		BAR L1 Alternative Training	30	30	0.08	1.60	48	590	1	26
		Enhanced Clean Air Car	91	91	0.28	4.16	125	450	4	0
		On-Board Diagnosis II	20	19	0.07	0.87	26	379	1	0
		On-Board Diagnostics	17	17	0.07	0.78	23	336	1	0
	670	Automotive Work Experience	7	6	0.03	0.23	7	210	1	20
	690	Special Projects	0	0	0.00				1	5
		Special Projects in Automotive	8	8	0.00	0.40	12	#INF	6	30
	708	Auto Principles Lab	31	25	0.16	3.82	115	708	1	26
	710	Fundamentals of Auto Mechanics	50	44	0.56	9.62	289	516	2	52
	713	Electricity/Electronics	24	23	1.00	17.28	518	518	1	20
	721	Steering, Suspension & Brakes	24	23	1.00	17.28	518	518	1	20
	728	Toyota Adv. Electrical	23	23	0.53	7.95	239	450	1	20
	730	Japanese Basic Electrical	24	23	0.53	8.30	249	467	1	22
	734	Auto Engine Diagnosis & Repair	25	22	1.00	18.00	540	540	1	20
	735	Transmissions and Drivelines	22	22	1.00	15.84	475	475	1	25
	751	Auto Engine Performance	24	24	1.00	17.28	518	518	1	20
	SC AUTO	769	Head and Valve Services	20	20	0.07	1.83	55	783	1
822		Head And Valve Service	4	4	0.07	0.35	11	152	1	24
SF AUTO	772	Basic Clean Air Car I	30	29	0.10	2.74	82	823	1	24
	842	Basic Clean Air Car I	2	2	0.10	0.24	7	73	1	24
SG AUTO	773	Automotive Electrical I	30	27	0.10	2.74	82	823	1	24
	840	Electrical I	1	1	0.10	0.09	3	27	1	24
SK AUTO	786	Air Conditioning I	18	17	0.07	1.65	49	705	1	24
	860	Air Conditioning I	8	8	0.07	0.71	21	304	1	24
SL AUTO	790	Automotive Brakes I	24	23	0.07	2.19	66	940	1	24
	850	Brakes I	1	1	0.07	0.00	0	0	1	24
SM AUTO	793	Engine Performance	24	24	0.10	2.19	66	658	1	24
	893	Engine Performance	2	2	0.10	0.18	5	55	1	24
SP AUTO	665	Bar A6 Alternative Training	25	25	0.09	1.14	34	367	1	20
SR AUTO	758	Auto Computer Controls	21	20	0.09	2.56	77	826	1	24
	858	Automotive Computer Controls	3	3	0.09	0.37	11	118	1	24
SS AUTO	771	Automotive Electrical II	24	22	0.07	2.19	66	940	1	24
	846	Electrical II	1	1	0.07	0.08	2	34	1	24
TT AUTO	768	On-Board Diagnostics II(OBDII)	20	20	0.09	2.44	73	784	1	24
	868	OnBoard Diagnostics II(OBDII)	4	2	0.09	0.31	9	100	1	24
<b>Fall 2004</b>	AUTO 665	2005 Smog check Update	38	34	0.07	1.04	31	466	1	30
		2005 Smog Check Update	41	38	0.07	1.10	33	493	1	26
		Advanced Lab Scopes (DSO)	16	16	0.04	0.37	11	261	1	26
		Bar A6 Alternative Training	29	26	0.09	1.19	36	382	1	26
		Bar A8 Transition	27	26	0.06	1.19	36	569	1	26
		BAR L1 Alternative	18	18	0.08	0.91	27	335	1	26

		Census Headcount	End of Term Headcount	FTEF	FTES	WSCH	Load	Sections	Max Enroll
		29	27	0.08	1.55	46	571	1	26
		60	60	0.13	2.15	64	512	2	51
		23	23	0.05	0.52	16	333	1	24
		28	28	0.07	1.19	36	546	1	30
		31	31	0.07	0.93	28	418	1	20
		46	44	0.07	1.34	40	603	1	35
670	Automotive Work Experience	4	4	0.03	0.13	4	120	1	20
690	Special Projects	0	0	0.00				1	5
	Special Projects in Automotive	2	2	0.00	0.08	3	#INF	6	30
708	Auto Principles Lab	29	27	0.16	3.58	107	663	1	26
710	Fundamentals of Auto Mechanics	49	43	0.56	9.80	294	525	2	52
713	Electricity/Electronics	24	22	1.00	17.28	518	518	1	24
721	Steering, Suspension & Brakes	25	25	1.00	18.00	540	540	1	24
725	Toyota Brakes and Chassis	23	22	0.78	11.83	355	453	1	24
727	Toyota Air Conditioning	23	23	0.27	16.56	497	1,835	1	24
734	Auto Engine Diagnosis & Repair	23	22	1.00	16.56	497	497	1	24
735	Transmissions and Drivelines	24	24	1.00	17.28	518	518	1	24
751	Auto Engine Performance	26	26	1.00	18.72	562	562	1	24
SC AUTO	769 Head and Valve Services	16	16	0.07	1.46	44	626	1	24
	822 Head And Valve Service	3	3	0.07	0.27	8	118	1	24
SE AUTO	772 Clean Air Car I	21	20	0.10	1.92	58	576	1	20
	842 Clean Air Car I	0	0	0.10	0.00	0	0	1	20
SF AUTO	772 Basic Clean Air Car I	20	20	0.10	2.44	73	731	1	24
	842 Basic Clean Air Car I	3	3	0.10	0.27	8	82	1	24
SG AUTO	773 Automotive Electrical I	24	24	0.10	2.19	66	658	1	24
	840 Electrical I	4	4	0.10	0.32	10	96	1	24
SK AUTO	786 Air Conditioning I	25	22	0.07	2.29	69	980	1	24
	860 Air Conditioning I	3	3	0.07	0.27	8	115	1	24
SL AUTO	790 Automotive Brakes I	22	22	0.07	1.89	57	808	1	24
	850 Brakes I	3	3	0.07	0.26	8	110	1	24
SM AUTO	793 Engine Performance	25	24	0.10	2.29	69	686	1	24
	893 Engine Performance	1	0	0.10	0.00	0	0	1	24
SR AUTO	758 Auto Computer Controls	19	16	0.09	2.32	69	747	1	24
	858 Automotive Computer Controls	1	1	0.09	0.12	4	39	1	24
SS AUTO	771 Automotive Electrical II	14	14	0.07	1.28	38	549	1	24
	846 Electrical II	4	3	0.07	0.26	8	113	1	24
TT AUTO	768 On-Board Diagnostics II(OBDII)	24	23	0.09	3.11	93	992	1	24
	868 OnBoard Diagnostics II(OBDII)	2	2	0.09	0.24	7	78	1	24
<b>Fall 2005</b>	AUTO 665 Smog check Update 2005	37	37	0.05	1.16	35	744	1	30
	Smog Check Update 2005	46	43	0.05	1.31	39	842	1	30
	Bar A6 Alternative Training	24	18	0.10	1.08	32	325	1	26
	Bar A8 Transition	15	15	0.09	0.91	27	294	1	26
	BAR L1 Alternative	32	28	0.11	2.13	64	610	1	26
	Electric & Hybrid Vehicles	17	15	0.06	0.66	20	322	1	24
	Evaporative Emission Systems	30	29	0.09	0.62	19	201	2	48
	Multiplexing & Can Systems	22	21	0.07	0.40	12	178	1	26
	On-Board Diagnosis II	19	19	0.07	0.32	10	137	1	26
	Smog Check 2005	34	32	0.07	0.98	29	439	1	30

		Census Headcount	End of Term Headcount	FTEF	FTES	WSCH	Load	Sections	Max Enroll
	Smog Check Training	35	31	0.13	1.04	31	235	2	52
	Smog Check Update 2005	29	29	0.05	0.88	27	568	1	30
670	Automotive Work Experience	10	9	0.07	0.33	10	150	1	20
690	Special Projects	0	0	0.00				1	5
	Special Projects in Automotive	3	2	0.00	0.30	9	#INF	6	30
708	Auto Principles Lab	23	21	0.16	2.84	85	526	1	26
710	Fundamentals of Auto Mechanics	58	44	0.56	12.76	383	684	2	52
713	Electricity/Electronics	22	21	1.00	16.43	493	493	1	24
721	Steering, Suspension & Brakes	22	20	1.00	15.84	475	475	1	24
728	Toyota Adv. Electrical	22	22	0.52	7.61	228	439	1	24
730	Japanese Basic Electrical	23	23	0.53	8.04	241	451	1	24
734	Auto Engine Diagnosis & Repair	19	18	1.00	13.17	395	395	1	24
735	Transmissions and Drivelines	18	16	1.00	13.44	403	403	1	24
751	Auto Engine Performance	27	27	1.00	20.16	605	605	1	24
SC AUTO	769 Head and Valve Services	23	20	0.07	2.10	63	900	1	24
	822 Head and Valve Services	0	0	0.07	0.00	0	0	1	24
SF AUTO	772 Clean Air Car I	26	25	0.12	2.77	83	708	1	24
	842 Basic Clean Air Car I	3	0	0.10	0.00	0	0	1	24
SG AUTO	773 Automotive Electrical I	27	21	0.10	2.47	74	741	1	24
	840 Automotive Electrical I	1	1	0.10	0.09	3	26	1	24
SK AUTO	786 Air Conditioning I	16	15	0.07	1.46	44	627	1	24
	860 Air Conditioning I	2	2	0.07	0.17	5	71	1	24
SL AUTO	790 Automotive Brakes I	19	18	0.07	1.74	52	744	1	24
	850 Brakes I	1	1	0.07	0.09	3	37	1	24
SM AUTO	793 Engine Performance	17	17	0.10	1.55	47	466	1	24
	893 Engine Performance	0	0	0.10	0.00	0	0	1	24
SR AUTO	758 Auto Computer Controls	13	11	0.09	1.58	48	511	1	24
	858 Computer Controls: G.M.	5	4	0.09	0.47	14	152	1	24
SS AUTO	771 Automotive Electrical II	23	22	0.07	2.10	63	901	1	24
	846 Electrical II	2	1	0.07	0.14	4	59	1	24
TT AUTO	768 On-Board Diagnostics II(OBDII)	18	18	0.09	2.19	66	706	1	24
	868 OnBoard Diagnostics II(OBDII)	3	3	0.09	0.34	10	110	1	24
<b>Fall 2006</b>	AUTO 665 Smog Check Update 2007	49	49	0.13	1.37	41	308	2	48
	2007 Smog Check Update	26	26	0.07	0.67	20	302	1	24
	Bar A6 Alternative Training	15	15	0.10	0.73	22	219	1	26
	Bar A8 Alternative Training	23	22	0.09	1.02	31	328	1	26
	BAR L1 Alternative	33	32	0.09	1.69	51	544	1	26
	Enhanced Clean Air Car Crse.	25	18	0.08	0.89	27	349	1	24
	Evaporative Emission Systems	19	19	0.05	0.49	15	313	1	24
	On-Board Diagnosis II	13	13	0.07	0.27	8	118	1	26
	Smog Check Update 2005	65	64	0.09	1.89	57	607	2	66
	Smog Check Update 2007	49	49	0.13	1.43	43	322	2	48
670	Automotive Work Experience	4	4	0.07	0.13	4	60	1	20
690	Special Projects	0	0	0.00				1	5
	Special Projects in Automotive	0	0	0.00				5	25
708	Auto Principles Lab	17	13	0.14	1.98	60	415	1	26

		Census Headcount	End of Term Headcount	FTEF	FTES	WSCH	Load	Sections	Max Enroll	
	710	Fundamentals of Auto Mechanics	50	47	0.56	11.00	330	589	2	52
	713	Electricity/Electronics	20	19	1.00	15.20	456	456	1	24
	721	Steering, Suspension & Brakes	20	20	1.00	15.20	456	456	1	24
	725	Toyota Brakes and Chassis	17	17	0.80	24.48	734	918	1	20
	727	Toyota Air Conditioning	16	16	0.27	11.52	346	1,296	1	22
	734	Auto Engine Diagnosis & Repair	19	17	1.00	14.44	433	433	1	24
	735	Transmissions and Drivelines	21	21	1.00	15.96	479	479	1	24
	751	Auto Engine Performance	25	25	1.00	19.00	570	570	1	24
SC	AUTO 769	Head and Valve Services	17	13	0.08	1.71	51	669	1	24
	822	Head and Valve Services	2	2	0.08	0.18	5	72	1	24
SF	AUTO 772	Clean Air Car I	20	18	0.10	2.01	60	603	1	24
	842	Basic Clean Air Car I	0	0	0.10	0.00	0	0	1	24
SG	AUTO 773	Automotive Electrical I	16	16	0.10	1.61	48	483	1	24
	840	Automotive Electrical I	3	3	0.10	0.29	9	87	1	24
SK	AUTO 786	Air Conditioning I	20	18	0.08	2.01	60	794	1	24
	860	Air Conditioning I	1	1	0.08	0.09	3	34	1	24
SL	AUTO 790	Automotive Brakes I	14	14	0.08	1.41	42	556	1	24
	850	Brakes I	3	3	0.08	0.27	8	106	1	24
SM	AUTO 793	Engine Performance	20	19	0.10	2.01	60	603	1	24
	893	Engine Performance	0	0	0.10	0.00	0	0	1	24
SR	AUTO 758	Auto Computer Controls	22	21	0.10	2.88	86	898	1	24
	858	Computer Controls: G.M.	3	3	0.10	0.26	8	82	1	24
SS	AUTO 771	Automotive Electrical II	18	15	0.08	1.81	54	715	1	24
	846	Electrical II	2	2	0.08	0.20	6	79	1	24
TT	AUTO 768	On-Board Diagnostics II(OBDII)	17	17	0.10	2.23	67	691	1	24
	868	OnBoard Diagnostics II(OBDII)	3	3	0.10	0.37	11	113	1	24
<b>Fall 2007</b>	AUTO 665S	Smog Check Update 2007	144	144	0.40	4.10	123	307	6	146
		665S SCT: Enhanced Clean Air Car	9	9	0.07	0.34	10	154	1	24
		665S Evaporative Emissions Systems	19	19	0.03	0.49	15	439	1	20
		665S SCT: On-Board Diagnostics II	9	9	0.07	0.41	12	176	1	20
		665S BAR A6 Alternative Training	20	14	0.10	0.82	25	247	1	24
		665S BAR L1 Alternative Training	31	25	0.20	1.52	46	229	1	24
		665S Toyota Hybrid Srvc/Training I	30	30	0.07	0.91	27	411	1	26
	670	Automotive Work Experience	1	1	0.00	0.13	4	#INF	1	20
	690	Special Projects	0	0	0.00				1	5
		Special Projects in Automotive	2	2	0.00	0.17	5	#INF	5	25
	708	Auto Principles Lab	31	26	0.16	3.62	109	678	1	26
	710	Fundamentals of Auto Mechanics	74	66	0.84	15.82	475	565	3	72
	713	Electricity/Electronics	21	20	1.00	15.96	479	479	1	22
	721	Steering, Suspension & Brakes	23	23	1.00	17.48	524	524	1	22
	728	Toyota Adv. Electrical	20	20	0.52	6.91	207	399	1	22
	730	Japanese Basic Electrical	20	20	0.53	6.91	207	388	1	22
	734	Auto Engine Diagnosis & Repair	24	24	1.00	18.24	547	547	1	22
	735	Transmissions and Drivelines	19	19	1.00	14.44	433	433	1	22
	751	Auto Engine Performance	28	27	1.00	21.28	638	638	1	28
	754	High Performance Engines I	27	24	0.10	2.80	84	839	1	24
	854	High Performance Engines I	0	0	0.10	0.00	0	0	1	5
SC	AUTO 769	Head and Valve Services	29	25	0.08	2.92	87	1,141	1	24

			Census Headcount	End of Term Headcount	FTEF	FTES	WSCH	Load	Sections	Max Enroll	
	822	Head and Valve Services	2	2	0.08	0.18	5	69	1	24	
SF	AUTO 772	Clean Air Car I	15	13	0.10	1.51	45	453	1	24	
	842	Basic Clean Air Car I	1	0	0.10	0.10	3	30	1	24	
SG	AUTO 773	Automotive Electrical I	18	17	0.10	1.81	54	543	1	24	
	840	Automotive Electrical I	0	0	0.10	0.00	0	0	1	24	
SK	AUTO 786	Air Conditioning I	14	12	0.08	1.41	42	556	1	24	
	860	Air Conditioning I	5	5	0.08	0.46	14	180	1	24	
SM	AUTO 793	Engine Performance	15	14	0.10	1.51	45	453	1	24	
	893	Engine Performance	2	2	0.10	0.20	6	60	1	24	
SS	AUTO 771	Automotive Electrical II	14	13	0.08	1.41	42	556	1	24	
	846	Electrical II	3	3	0.08	0.30	9	119	1	24	
<b>Spring 2004</b>	AUTO 665	Advanced Clean Air Car	49	49	0.14	2.15	64	463	2	50	
		ASE Prep: L1 Adv. Eng. Perform	16	16	0.00	0.15	5	1,385	1	28	
		ASE Preparation: A8	29	28	0.09	1.39	42	462	1	26	
		BAR A6 Alternative Training	26	21	0.07	0.96	29	412	1	26	
		BAR L1 Alternative Training	29	29	0.19	1.66	50	267	1	26	
		Enhanced Clean Air Car	21	21	0.07	0.78	23	336	1	24	
		OBD II	22	22	0.07	0.82	25	353	1	20	
		OBD II Update Training	22	22	0.07	1.01	30	431	1	26	
		Smog Check 2003 Program Updat	80	80	0.07	1.13	34	508	2	60	
		670	Automotive Work Experience	13	13	0.10	0.53	16	160	1	10
		690	Special Projects	2	2	0.00	0.07	2	#INF	2	15
			Special Projects In Auto	6	5	0.00	0.33	10	#INF	5	100
		708	Auto Principles Lab	28	28	0.15	3.27	98	668	1	26
		710	Fundamentals Auto Mechanics	32	24	0.28	6.40	192	686	1	26
			Fundamentals of Auto Mechanics	29	26	0.28	5.80	174	621	1	26
		713	Electricity/Electronics	23	22	1.00	15.61	468	468	1	24
		721	Steering, Suspension & Brakes	22	21	1.00	15.84	475	475	1	24
		729	Toyota Engine Performance	20	19	0.97	14.40	432	447	1	24
		734	Auto Engine Diagnosis & Repair	25	23	1.00	18.00	540	540	1	24
		735	Trans/Drive Trains Diag/Repair	23	23	1.00	16.56	497	497	1	24
		743	Pre-Delivery Service	20	20	0.04	0.53	16	400	1	24
		752	Advanced Engine Performance	26	26	1.00	18.72	562	562	1	24
		772	Clean Air Car I	19	19	0.20	1.74	52	261	1	0
		775	Oscilloscopes/Exhaust Gas	23	23	0.05	1.05	32	631	1	24
		848	Oscilloscope Interpretatn	1	1	0.05	0.05	1	27	1	24
	SC	AUTO 758	Auto Computer Controls	22	20	0.09	2.68	80	885	1	22
		858	Automotive Computer Controls	1	1	0.09	0.11	3	38	1	22
SF	AUTO 765	Ignition Systems I	23	19	0.05	1.05	32	631	1	22	
	865	Ignition Systems I	4	4	0.05	0.18	5	110	1	22	
SI	AUTO 772	Clean Air Car I	27	26	0.10	2.88	86	864	1	24	
	842	Clean Air Car I	1	0	0.10	0.00	0	0	1	24	
SJ	AUTO 773	Auto Electrical I	33	27	0.10	3.02	91	905	1	24	
	840	Auto. Electrical I	0	0	0.10	0.00	0	0	1	24	
SL	AUTO 778	Manual Transmissions I	18	17	0.07	1.65	49	706	1	24	
	878	Manual Transmissions I	5	5	0.07	0.45	13	191	1	24	
SM	AUTO 779	Block Service	19	13	0.07	1.74	52	746	1	24	
	823	Block Service	3	3	0.07	0.27	8	118	1	24	

			Census	End of	FTEF	FTES	WSCH	Load	Sections	Max	
			Headcount	Term						Enroll	
				Headcount							
SO	AUTO 791	Automotive Chassis II	22	22	0.07	2.01	60	863	1	24	
	852	Automotive Chassis II	1	1	0.07	0.09	3	37	1	24	
SP	AUTO 792	Automotive Chassis I	21	18	0.10	1.92	58	576	1	24	
	853	Automotive Chassis I	5	5	0.10	0.45	13	134	1	24	
SQ	AUTO 793	Engine Performance	26	25	0.10	2.38	71	713	1	24	
	893	Engine Performance	2	1	0.10	0.09	3	27	1	24	
TV	AUTO 768	OnBoard Diagnostics II(OBDII)	27	26	0.11	3.29	99	925	1	26	
	868	OnBoard Diagnostics II(OBDII)	1	1	0.11	0.12	4	34	1	26	
TW	AUTO 781	Electrical III	19	17	0.10	1.74	52	521	1	24	
	881	Electrical III	3	3	0.10	0.27	8	82	1	24	
TZ	AUTO 777	Automatic Transmissions I	23	18	0.10	2.10	63	631	1	27	
	832	Automatic Transmissions I	3	3	0.05	0.26	8	158	1	27	
<b>Spring 2005</b>	AUTO 665	2005 Smog Check Update	123	118	0.20	3.47	104	521	3	90	
		BAR 8 Alternative Training	28	27	0.10	1.71	51	529	1	28	
		BAR A6 Alternative Training	30	25	0.09	1.52	46	493	1	26	
		Bar L1 Alternative	25	25	0.12	1.49	45	363	1	26	
		BAR L1 Alternative Training	25	25	0.09	1.52	46	490	1	26	
		Electric & Hybrid Vehicles	28	25	0.07	1.28	38	549	1	26	
		Enhanced Clean Air Car	28	27	0.07	1.10	33	475	1	26	
		Enhanced Clear Air	25	23	0.07	0.87	26	376	1	26	
		Evaporative Emission Systems	26	25	0.04	0.64	19	523	1	26	
		OBD II	25	25	0.07	0.91	27	392	1	26	
		OBD II Update	22	20	0.07	0.91	27	392	1	24	
		Smog Check 2005 Program Update	83	80	0.13	2.38	71	535	2	60	
		Smog Check Update 2005	42	42	0.07	1.28	38	576	1	30	
		670	Automotive Work Experience	3	3	0.00	0.10	3	#INF	1	10
		690	Special Projects	0	0	0.00				2	15
			Special Projects In Auto	2	2	0.00	0.20	6	#INF	5	100
		706	Toyota Engines	25	23	0.44	7.20	216	491	1	20
		707	Toyota Transmissions	23	22	0.60	8.99	270	451	1	24
		708	Auto Principles Lab	30	28	0.15	3.50	105	716	1	26
		710	Fundamentals Auto Mechanics	28	24	0.28	5.60	168	600	1	26
			Fundamentals of Auto Mechanics	27	26	0.28	5.40	162	579	1	26
		713	Electricity/Electronics	23	20	1.00	16.56	497	497	1	24
		721	Steering, Suspension & Brakes	23	20	1.00	16.56	497	497	1	24
		734	Auto Engine Diagnosis & Repair	24	24	1.00	17.28	518	518	1	24
		735	Trans/Drive Trains Diag/Repair	20	20	1.00	14.40	432	432	1	24
		752	Advanced Engine Performance	27	26	1.05	19.44	583	554	1	24
	775	Oscilloscopes/Exhaust Gas	18	18	0.05	0.82	25	494	1	24	
	848	Oscilloscope Interpretatn	0	0	0.05	0.00	0	0	1	24	
SC	AUTO 758	Auto Computer Controls	16	12	0.09	1.95	59	627	1	22	
SF	AUTO 765	Ignition Systems I	25	24	0.05	1.14	34	686	1	24	
	865	Ignition Systems I	2	2	0.05	0.09	3	51	1	24	
SI	AUTO 772	Clean Air Car I	25	22	0.10	2.67	80	800	1	24	
	842	Clean Air Car I	1	1	0.10	0.09	3	27	1	24	
SJ	AUTO 773	Auto Electrical I	25	24	0.10	2.29	69	686	1	24	
	840	Auto. Electrical I	0	0	0.10	0.00	0	0	1	24	
SL	AUTO 778	Manual Transmissions I	22	20	0.07	2.01	60	863	1	24	

			Census Headcount	End of Term Headcount	FTEF	FTES	WSCH	Load	Sections	Max Enroll	
	878	Manual Transmissions I	5	5	0.07	0.43	13	186	1	24	
SM	AUTO 779	Block Service	23	16	0.07	2.10	63	903	1	24	
	823	Block Service	2	2	0.07	0.18	5	76	1	24	
SO	AUTO 791	Automotive Chassis II	14	11	0.07	1.28	38	549	1	24	
	852	Automotive Chassis II	1	1	0.07	0.18	5	78	1	24	
SP	AUTO 792	Automotive Chassis I	17	17	0.10	1.55	47	466	1	24	
	853	Automotive Chassis I	1	1	0.10	0.08	2	24	1	24	
SQ	AUTO 793	Engine Performance	26	24	0.10	2.38	71	713	1	24	
	893	Engine Performance	1	1	0.10	0.18	5	55	1	24	
TQ	AUTO 772	Basic Clean Air Car I	23	21	0.10	1.92	58	576	1	25	
	842	Clean Air Car I	0	0	0.10	0.00	0	0	1	25	
TV	AUTO 768	OnBoard Diagnostics II(OBDII)	20	18	0.10	2.44	73	731	1	26	
	868	OnBoard Diagnostics II(OBDII)	3	3	0.10	0.37	11	110	1	26	
TX	AUTO 761	Automotive Brakes II	20	18	0.05	0.91	27	549	1	22	
	861	Automotive Brakes II	0	0	0.05	0.00	0	0	1	22	
TY	AUTO 858	Auto Computer Controls	1	0	0.09	0.00	0	0	1	22	
TZ	AUTO 777	Automatic Transmissions I	19	17	0.10	1.74	52	521	1	27	
	832	Automatic Transmissions I	5	5	0.05	0.45	14	271	1	27	
<b>Spring 2006</b>	AUTO 665	2005 Smog Check Update	108	96	0.12	2.93	88	731	3	90	
		Advanced Lab Scoe (DSO)	11	8	0.09	0.50	15	168	1	26	
		BAR 8 Alternative Training	25	23	0.10	1.34	40	416	1	28	
		BAR A6 Alternative Training	21	16	0.10	0.96	29	288	1	26	
		BAR L1 Alternative Training	36	31	0.09	1.89	57	608	1	26	
		Electric & Hybrid Vehicles	12	11	0.07	0.55	16	235	1	26	
		Evaporative Emission Systems	16	16	0.04	0.46	14	374	1	16	
		Evaporative Emissions Systems	27	27	0.06	0.82	25	435	1	0	
		Multiplexing & Can Systems	26	20	0.07	0.61	18	274	1	26	
		OBDII-Evaporative Emission Sys	22	20	0.05	0.58	17	372	1	13	
		SCT: Enhanced Clean Air Car	20	16	0.07	0.73	22	317	1	26	
		Smog Check 2005 Program Updat	27	27	0.04	0.82	25	617	1	30	
		Smog Check Update 2005	31	25	0.04	0.76	23	571	1	30	
		670	Automotive Work Experience	7	7	0.03	0.23	7	210	1	10
		690	Special Projects	0	0	0.00				2	15
			Special Projects In Auto	6	3	0.00	0.43	13	#INF	5	100
		708	Auto Principles Lab	21	18	0.15	1.96	59	401	1	26
	710	Fundamentals Auto Mechanics	22	18	0.28	4.02	121	431	1	26	
		Fundamentals of Auto Mechanics	17	15	0.28	3.11	93	333	1	26	
	713	Electricity/Electronics	21	21	1.00	14.26	428	428	1	24	
	721	Steering, Suspension & Brakes	21	19	1.00	14.26	428	428	1	24	
	729	Toyota Engine Performance	21	19	0.99	6.80	204	207	1	26	
	734	Auto Engine Diagnosis & Repair	22	20	1.00	14.93	448	448	1	24	
	735	Trans/Drive Trains Diag/Repair	22	21	1.00	14.93	448	448	1	24	
	743	Pre-Delivery Service	19	19	0.04	0.54	16	370	1	20	
	752	Advanced Engine Performance	27	27	1.00	18.33	550	550	1	27	
SC	AUTO 758	Auto Computer Controls	14	13	0.09	1.71	51	549	1	22	
SF	AUTO 765	Ignition Systems I	11	8	0.05	0.50	15	302	1	24	
	865	Ignition Systems I	2	2	0.05	0.09	3	55	1	24	
SI	AUTO 772	Clean Air Car I	18	18	0.10	1.75	52	525	1	24	

			Census Headcount	End of Term Headcount	FTEF	FTES	WSCH	Load	Sections	Max Enroll	
SJ	AUTO 773	Auto Electrical I	12	10	0.10	1.10	33	329	1	24	
	840	Auto. Electrical I	1	1	0.10	0.09	3	27	1	24	
SL	AUTO 778	Manual Transmissions I	10	10	0.07	0.91	27	392	1	24	
	878	Manual Transmissions I	2	2	0.07	0.17	5	74	1	24	
SM	AUTO 779	Block Service	22	19	0.07	2.01	60	863	1	24	
	823	Block Service	1	1	0.07	0.09	3	39	1	24	
SO	AUTO 791	Automotive Chassis II	10	9	0.07	0.91	27	392	1	24	
	852	Automotive Chassis II	0	0	0.07	0.00	0	0	1	24	
SP	AUTO 792	Automotive Chassis I	13	11	0.10	1.19	36	357	1	24	
	853	Automotive Chassis I	1	1	0.10	0.09	3	26	1	24	
SQ	AUTO 793	Engine Performance	19	13	0.10	1.74	52	521	1	24	
	893	Engine Performance	5	5	0.10	0.43	13	129	1	24	
TQ	AUTO 842	Clean Air Car I	3	3	0.10	0.28	9	85	1	25	
TV	AUTO 768	OnBoard Diagnostics II(OBDII)	24	22	0.10	2.93	88	878	1	26	
	868	OnBoard Diagnostics II(OBDII)	0	0	0.10	0.00	0	0	1	26	
TY	AUTO 858	Auto Computer Controls	0	0	0.09	0.00	0	0	1	22	
TZ	AUTO 777	Automatic Transmissions I	21	16	0.10	1.92	58	576	1	27	
	832	Automatic Transmissions I	2	2	0.05	0.18	5	106	1	27	
<b>Spring 2007</b>	AUTO 665	Smog Check Update 2007	23	20	0.07	0.61	18	274	1	22	
	SA	Smog Check Update 2007	231	229	0.67	6.83	205	307	10	246	
		665S	Electric & Hybrid Vehicles	16	13	0.07	0.73	22	313	1	26
		665S	SCT: Enhanced Clean Air Car	20	20	0.07	0.91	27	392	1	26
		665S	Evaporative Emissions Systems	19	19	0.05	0.58	17	372	1	24
		665S	BAR A6 Alternative Training	16	14	0.09	0.81	24	260	1	26
		665S	BAR A8 Alt. Engine Performance	20	19	0.09	0.91	27	294	1	28
		665S	BAR L1 Alternative Training	28	28	0.09	1.34	40	431	1	26
		665S	Advanced Lab Scope (DSO)	16	15	0.07	0.47	14	212	1	26
		670	Automotive Work Experience	6	6	0.03	0.20	6	180	1	10
		690	Special Projects	1	1	0.00	0.10	3	#INF	2	15
			Special Projects In Auto	4	3	0.00	0.28	9	#INF	4	80
		706	Toyota Engines	20	17	0.43	6.17	185	434	1	24
		707	Toyota Transmissions	16	16	0.59	6.36	191	322	1	24
		708	Auto Principles Lab	22	19	0.15	2.05	62	420	1	26
		710	Fundamentals Auto Mechanics	30	24	0.28	6.60	198	707	1	26
			Fundamentals of Auto Mechanics	29	25	0.28	6.38	191	684	1	26
		713	Electricity/Electronics	23	23	1.00	16.87	506	506	1	24
		721	Steering, Suspension & Brakes	23	22	1.00	16.87	506	506	1	24
		734	Auto Engine Diagnosis & Repair	22	22	1.00	16.13	484	484	1	24
	735	Trans/Drive Trains Diag/Repair	18	15	1.00	12.96	389	389	1	24	
	752	Advanced Engine Performance	27	27	1.00	19.44	583	583	1	27	
SC	AUTO 758	Auto Computer Controls	13	13	0.09	1.70	51	548	1	22	
SF	AUTO 765	Ignition Systems I	18	18	0.05	0.91	27	543	1	24	
	865	Ignition Systems I	1	1	0.05	0.00	0	0	1	24	
SI	AUTO 772	Clean Air Car I	20	20	0.10	2.13	64	640	1	24	
SL	AUTO 778	Manual Transmissions I	11	11	0.07	1.11	33	475	1	24	
	878	Manual Transmissions I	1	1	0.07	0.10	3	43	1	24	

			Census Headcount	End of Term Headcount	FTEF	FTES	WSCH	Load	Sections	Max Enroll
SM	AUTO 779	Block Service	21	20	0.07	2.11	63	906	1	24
	823	Block Service	4	4	0.07	0.37	11	157	1	24
SP	AUTO 792	Automotive Chassis I	11	10	0.10	1.11	33	332	1	24
	853	Automotive Chassis I	4	4	0.10	0.35	10	105	1	24
TQ	AUTO 842	Clean Air Car I	0	0	0.10	0.00	0	0	1	25
TV	AUTO 768	OnBoard Diagnostics II(OBDII)	18	18	0.09	2.36	71	758	1	26
	868	OnBoard Diagnostics II(OBDII)	2	2	0.09	0.23	7	73	1	26
TX	AUTO 761	Automotive Brakes II	11	11	0.05	0.55	17	332	1	22
	861	Automotive Brakes II	1	1	0.05	0.05	1	27	1	22
TY	AUTO 858	Auto Computer Controls	1	1	0.09	0.11	3	37	1	22
TZ	AUTO 777	Automatic Transmissions I	16	16	0.10	1.61	48	483	1	27
	832	Automatic Transmissions I	0	0	0.10	0.00	0	0	1	27
<b>Spring 2008</b>	AUTO 665	Smog Check Update 2007	25	25	0.07	0.79	24	356	1	24
	SA	Smog Check Update 2007	105	104	0.27	3.02	91	339	4	95
	665S	Electric & Hybrid Vehicles	21	19	0.07	1.06	32	453	1	26
	665S	SCT: Enhanced Clean Air Car	19	18	0.07	1.01	30	434	1	26
	665S	Evaporative Emissions Systems	19	19	0.05	0.46	14	294	1	24
	665S	BAR A8 Alt. Engine Performance	15	15	0.09	0.90	27	289	1	26
	665S	BAR L1 Alternative Training	23	23	0.09	1.40	42	451	1	26
	665S	Multiplexing & Can Systems	14	14	0.07	0.27	8	123	1	26
	665S	Advanced Lab Scope (DSO)	10	10	0.07	0.27	8	123	1	26
	665S	Intro to Lab Scope (DSO)	10	10	0.07	0.21	6	96	1	26
	665S	Smog Check Update 2005	16	16	0.07	0.53	16	240	1	30
	670	Automotive Work Experience	1	0	0.00	0.10	3	#INF	1	10
	690	Special Projects	0	0	0.00				2	15
		Special Projects In Auto	3	3	0.00	0.23	7	#INF	4	80
	708	Auto Principles Lab	19	14	0.15	1.90	57	389	1	26
	710	Fundamentals Auto Mechanics	21	19	0.28	4.20	126	450	1	26
		Fundamentals of Auto Mechanics	36	34	0.54	6.58	197	366	2	52
	713	Electricity/Electronics	22	21	1.00	16.13	484	484	1	24
	721	Steering, Suspension & Brakes	22	22	1.00	16.13	484	484	1	24
	729	Toyota Engine Performance	19	17	0.97	13.01	390	404	1	26
	734	Auto Engine Diagnosis & Repair	24	23	1.00	17.60	528	528	1	24
	735	Trans/Drive Trains Diag/Repair	22	21	1.00	15.84	475	475	1	24
	743	Pre-Delivery Service	17	17	0.03	0.53	16	478	1	20
752	Advanced Engine Performance	25	25	1.00	18.00	540	540	1	27	
SC	AUTO 758	Auto Computer Controls	18	18	0.09	2.19	66	706	1	24
	858	Auto Computer Controls	2	2	0.09	0.24	7	78	1	24
SD	AUTO 755	High Performance Engines II	24	21	0.10	2.19	66	658	1	20
	855	High Performance Engines II	0	0	0.10	0.00	0	0	1	20
SI	AUTO 772	Clean Air Car I	21	20	0.10	2.24	67	672	1	24
	842	Clean Air Car I	1	1	0.10	0.09	3	27	1	24
SL	AUTO 778	Manual Transmissions I	12	12	0.07	1.10	33	471	1	24
	878	Manual Transmissions I	0	0	0.07	0.00	0	0	1	24
SM	AUTO 779	Block Service	17	17	0.07	1.55	47	667	1	24
	823	Block Service	3	3	0.07	0.27	8	118	1	24
SP	AUTO 792	Automotive Chassis I	13	13	0.10	1.19	36	357	1	24
	853	Automotive Chassis I	3	3	0.10	0.26	8	77	1	24

			Census Headcount	End of Term Headcount	FTEF	FTES	WSCH	Load	Sections	Max Enroll	
TV	AUTO 768	OnBoard Diagnostics II(OBDII)	15	15	0.09	1.97	59	632	1	26	
	868	OnBoard Diagnostics II(OBDII)	1	1	0.09	0.13	4	42	1	26	
TZ	AUTO 777	Automatic Transmissions I	20	20	0.10	2.01	60	603	1	27	
	832	Automatic Transmissions I	1	1	0.10	0.09	3	28	1	27	
Summer 2003	AUTO 665	Enhanced Clean Air	28	28	0.07	1.28	38	549	1	0	
		Enhanced Clean Air Car	70	70	0.21	3.20	96	458	3	0	
		Smog Check Update 2003	64	64	0.07	1.01	30	453	2	0	
	710	Fundamentals of Auto Mechanics	32	28	0.28	6.73	202	721	1	27	
SB	AUTO 764	Emissions Control Systems I	17	17	0.10	0.85	26	256	1	20	
	864	Emissions Control Systems I	14	12	0.00	0.51	15	#INF	1	20	
TE	AUTO 776	Drivelines/Differentials	21	20	0.14	2.06	62	442	1	22	
	830	Drivelines/Differentials	1	1	0.00	0.10	3	#INF	1	22	
Summer 2004	AUTO 665	Advanced lab Scope (DSO)	18	16	0.05	0.24	7	146	1	24	
		Dynamometer Diagnostics	21	21	0.05	0.61	18	366	1	24	
		Evaporative Emissions Systems	24	24	0.05	0.52	16	311	1	24	
		OBD I Diagnostics	22	21	0.07	0.55	16	235	1	24	
		Smog Check Update 2003	69	68	0.07	1.02	31	460	2	48	
	708	Automotive Principles Lab	26	20	0.15	2.50	75	509	1	25	
	710	Fundamentals of Auto Mechanics	26	25	0.28	5.24	157	561	1	27	
SB	AUTO 764	Emissions Control Systems I	23	21	0.05	1.16	35	694	1	26	
	864	Emissions Control Systems I	3	2	0.05	0.09	3	55	1	26	
TE	AUTO 776	Drivelines/Differentials	17	13	0.07	1.67	50	715	1	22	
	830	Drivelines/Differentials	3	3	0.07	0.27	8	114	1	22	
TK	AUTO 786	Automotive Air Conditioning I	24	24	0.07	2.19	66	939	1	0	
	860	Automotive Air Conditioning I	0	0	0.07	0.00	0	0	1	0	
Summer 2005	AUTO 665	2005 Smog Check Update	34	31	0.05	0.94	28	607	1	30	
		Advanced lab Scope (DSO)	15	12	0.05	0.38	11	245	1	24	
		Evaporative Emissions Systems	15	14	0.05	0.30	9	196	1	26	
		Smog Check Update 2005	127	121	0.14	3.54	106	757	3	90	
	708	Automotive Principles Lab	23	19	0.14	2.10	63	451	1	25	
	710	Fundamentals of Auto Mechanics	27	24	0.28	4.94	148	529	1	27	
SB	AUTO 764	Emissions Control Systems I	23	17	0.05	1.05	32	631	1	26	
	864	Emissions Control Systems I	4	4	0.05	0.17	5	103	1	26	
TE	AUTO 776	Drivelines/Differentials	23	22	0.07	2.26	68	967	1	24	
	830	Drivelines/Differentials	3	3	0.07	0.27	8	117	1	24	
Summer 2006	AUTO 665	Smog Check Update 2005	75	75	0.09	2.07	62	666	2	60	
		710	Fundamentals of Auto Mechanics	29	24	0.28	5.30	159	568	1	27
SC	AUTO 786	Automotive Air Conditioning I	20	18	0.09	1.83	55	593	1	20	
	860	Automotive Air Conditioning I	0	0	0.09	0.00	0	0	1	20	
Summer 2007	AUTO 665S	Smog Check Update 2007	81	81	0.20	2.44	73	366	3	78	
		Evaporative Emissions Systems	18	18	0.06	0.43	13	226	1	24	
		SCT: On-Board Diagnostics II	23	23	0.09	1.75	53	563	1	24	
		Multiplexing & Can Systems	20	20	0.07	0.49	15	219	1	24	
		708	Automotive Principles Lab	14	11	0.16	1.38	41	262	1	25
		710	Fundamentals of Auto Mechanics	32	31	0.28	5.85	176	627	1	27
SB	AUTO 764	Emissions Control Systems I	14	13	0.05	0.64	19	384	1	26	
	864	Emissions Control Systems I	0	0	0.05	0.00	0	0	1	26	
SC	AUTO 786	Automotive Air Conditioning I	17	17	0.08	1.71	51	675	1	20	

		<b>Census Headcount</b>	<b>End of Term Headcount</b>	<b>FTEF</b>	<b>FTES</b>	<b>WSCH</b>	<b>Load</b>	<b>Sections</b>	<b>Max Enroll</b>
	860 Automotive Air Conditioning I	0	0	0.08	0.00	0	0	1	20
TE	AUTO 776 Drivelines/Differentials	14	14	0.07	1.28	38	524	1	24
	830 Drivelines/Differentials	6	6	0.07	0.53	16	217	1	24
TU	AUTO 781 Electrical III	11	10	0.10	1.01	30	302	1	24
	881 Electrical III	0	0	0.10	0.00	0	0	1	24

Source: SMCCCD Data Warehouse

Census Headcount: Number of duplicated headcount at final census.

End of Term Headcount: Number of duplicated headcount at the end of the term.

FTEF: Total number of full time equivalent faculty assigned.

FTES: Total number of full time equivalent students enrolled at first census.

WSCH: Weekly student contact hours generated by census enrollments.

Load: The ratio of WSCH to FTEF, used to measure productivity.

Sections: Total number of sections offered per semester.

Max Enroll: The enrollment capacity or maximum enrollment as defined in curriculum.