

Department Productivity: By Year and By Term

Art Department
2003/04 to 2007/08

	Census Headcount	End of Term Headcount	FTEF	FTES	WSCH	Load	Sections	Max Enroll
2003/04	1,566	1,273	13.93	311.56	9,347	671	126	1,848
2004/05	1,635	1,346	14.06	311.82	9,355	665	131	1,978
2005/06	1,550	1,273	14.78	345.67	10,370	702	140	2,018
2006/07	1,418	1,164	14.72	258.25	7,747	526	136	2,106
2007/08	1,759	1,449	16.21	316.26	9,488	585	152	2,401

	Census Headcount	End of Term Headcount	FTEF	FTES	WSCH	Load	Sections	Max Enroll
Fall 2003	672	548	5.98	135.31	4,059	679	53	740
Fall 2004	631	519	6.12	125.19	3,756	613	55	767
Fall 2005	601	496	6.19	120.44	3,613	584	57	775
Fall 2006	540	449	5.83	101.25	3,037	521	53	760
Fall 2007	634	506	6.39	121.04	3,631	568	59	843
Spring 2004	646	511	6.23	136.86	4,106	659	56	830
Spring 2005	728	585	6.11	140.68	4,220	690	58	909
Spring 2006	641	524	6.35	181.14	5,434	856	63	885
Spring 2007	664	528	6.87	123.28	3,699	538	66	1,023
Spring 2008	787	659	7.46	146.68	4,400	590	71	1,114
Summer 2003	248	214	1.72	39.39	1,182	687	17	279
Summer 2004	276	242	1.82	45.95	1,378	757	18	302
Summer 2005	308	253	2.24	44.10	1,323	590	20	359
Summer 2006	214	187	2.01	33.71	1,011	502	17	324
Summer 2007	338	284	2.36	48.54	1,456	618	22	444

Source: SMCCCD Data Warehouse

*Note: Report includes the following crosslisted courses: MUS 115. Interdepartmental crosslisted courses are included in fill rate figures only. Crosslisted courses have been combined to calculate a single fill rate.

Census Headcount: Number of duplicated headcount at final census.

End of Term Headcount: Number of duplicated headcount at the end of the term.

FTEF: Total number of full time equivalent faculty assigned.

FTES: Total number of full time equivalent students enrolled at first census.

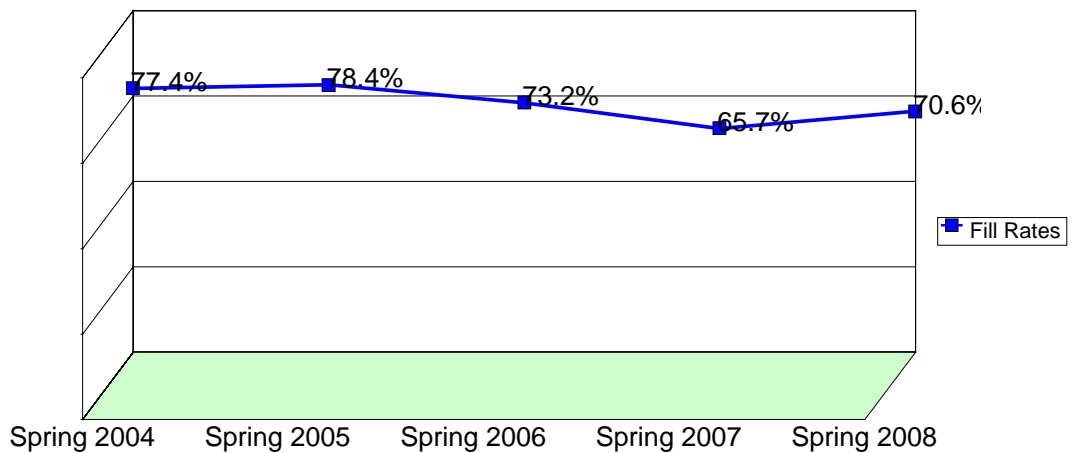
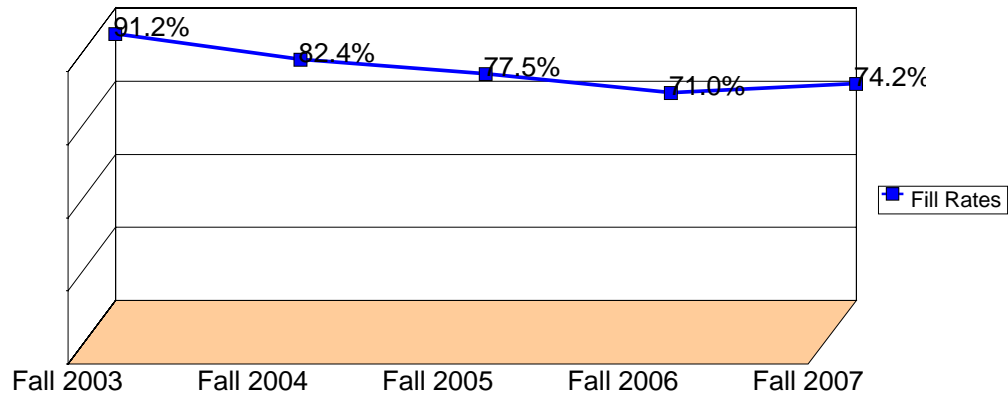
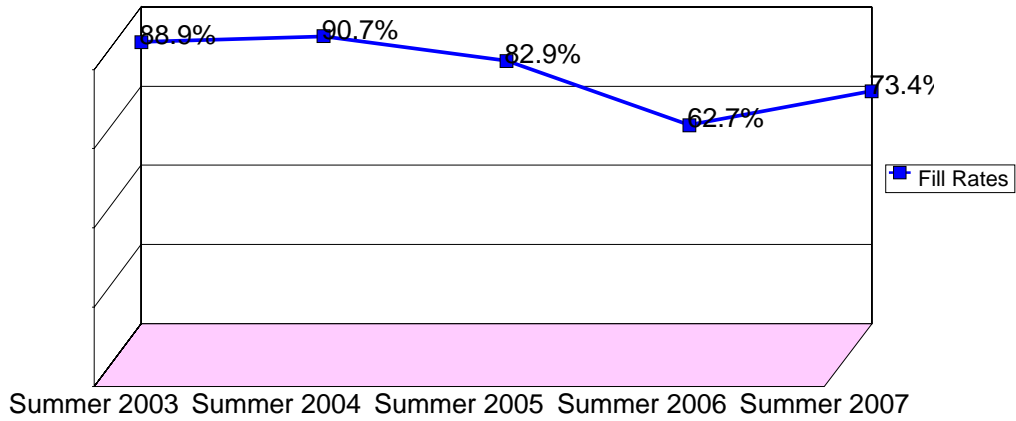
WSCH: Weekly student contact hours generated by census enrollments.

Load: The ratio of WSCH to FTEF, used to measure productivity.

Sections: Total number of sections offered per semester.

Max Enroll: The enrollment capacity or maximum enrollment as defined in curriculum.

Department Fill Rates By Term



Source: SMCCCD Data Warehouse

*Note: For a list of courses included in this report, see Department Productivity: Term by Course. Interdepartmental crosslisted courses are included in fill rate figures only. Crosslisted courses have been combined to calculate a single fill rate.

Fill Rates: The percent a class fills/enrolls based on capacity or enrollment maximum defined in the curriculum (does not include positive attendance, open entry/open exit, or independent study classes).

			Census	End of							Max
			Headcount	Term	FTEF	FTES	WSCH	Load	Sections	Enroll	
Fall 2003	ART	101	History of Art I	55	51	0.20	5.50	165	825	1	45
		102	History of Art II	37	23	0.20	4.07	122	611	1	45
		105	Art of Asia and the Near East	46	39	0.20	4.60	138	690	1	45
		130	Art Appreciation	52	44	0.20	5.20	156	780	1	45
		351	Photography I	29	25	0.22	4.64	139	641	1	27
		665	Gallery Practicum	6	4	0.07	0.60	18	270	1	10
		690	Special Projects	13	13	0.00	0.43	13	#INF	3	15
WA	ART	411	Ceramics I	17	16	0.09	5.10	153	1,800	1	24
		412	Ceramics II	4	3	0.09	1.20	36	424	1	24
		417	Ceramic Glazing Techniques	3	3	0.09	0.90	27	318	1	24
		665	Cups, Cups and More Fun	4	4	0.09	1.20	36	424	1	24
WB	ART	351	Photography I	17	14	0.12	5.10	153	1,324	1	27
		352	Photography II	8	7	0.11	2.40	72	642	1	27
		353	Photography III	2	1	0.11	0.60	18	160	1	27
WC	ART	354	Color Photography I	18	16	0.17	5.40	162	972	1	27
		355	Color Photography II	0	0	0.17	0.00	0	0	1	27
WD	ART	411	Ceramics I	19	17	0.11	5.70	171	1,496	1	30
		412	Ceramics II	4	4	0.11	1.20	36	318	1	30
		417	Ceramic Glazing Techniques	2	2	0.11	0.60	18	159	1	30
		665	Cups, Cups and More Fun	4	3	0.09	1.60	48	565	1	30
WE	ART	411	Ceramics I	13	12	0.11	3.90	117	1,024	1	30
		412	Ceramics II	2	1	0.11	0.60	18	159	1	30
		417	Ceramic Glazing Techniques	3	3	0.11	0.90	27	238	1	30
		665	Cups, Cups and More Fun	5	5	0.09	1.50	45	529	1	30
WF	ART	405	Sculpture I	24	19	0.09	7.68	230	2,504	1	40
		406	Sculpture II	2	2	0.09	0.64	19	209	1	40
		407	Sculpture III: Direct Metal	1	1	0.09	0.32	10	104	1	40
		665	Advanced Ceramic Sculpture	8	6	0.09	2.56	77	835	1	40
WH	ART	352	Photography II	14	12	0.12	2.33	70	587	1	27
		353	Photography III	7	6	0.12	1.17	35	293	1	27
WI	ART	204	Drawing I	21	20	0.17	6.30	189	1,134	1	35
		205	Drawing II	4	4	0.17	1.20	36	216	1	35
WY	ART	115	Art, Music and Ideas	24	19	0.10	2.40	72	720	1	45
		MUS. 115	Music, Art and Ideas	23	19	0.10	2.30	69	690	1	45
XA	ART	204	Drawing I	29	16	0.11	6.77	203	1,792	1	35
		205	Drawing II	4	3	0.11	0.93	28	247	1	35
XB	ART	207	Life Drawing	22	17	0.11	3.52	106	932	1	35
		665	Exploration in Figure Drawing	13	13	0.11	2.08	62	574	1	35
XD	ART	214	Color	10	10	0.11	3.00	90	794	1	35
		221	Painting I	13	10	0.11	3.90	117	1,045	1	35
		222	Painting II	4	3	0.11	1.20	36	327	1	35
XE	ART	214	Color	4	3	0.08	0.67	20	259	1	35
		221	Painting I	28	17	0.07	4.67	140	1,872	1	35
		222	Painting II	6	6	0.07	1.00	30	401	1	35
XO	ART	208	Portrait Drawing I	10	6	0.11	3.00	90	794	1	35
		209	Portrait Drawing II	2	2	0.11	0.60	18	164	1	35

				Census	End of	Art Department					Max
				Headcount	Term	FTEF	FTES	WSCH	Load	Sections	Enroll
								2003/04 to 2007/08			
		248	Portraits in Pastel	4	4	0.11	1.20	36	327	1	35
		665	Experimental Portraiture	7	7	0.09	2.10	63	741	1	35
XP	ART	204	Drawing I	27	18	0.17	8.10	243	1,458	1	35
		205	Drawing II	2	0	0.17	0.60	18	108	1	35
XT	ART	201	Form and Composition I	14	10	0.11	3.27	98	865	1	35
		202	Form and Composition II	5	4	0.11	1.17	35	309	1	35
Fall 2004	ART	101	History of Art I	45	35	0.20	4.50	135	675	1	45
		102	History of Art II	33	28	0.40	3.48	104	261	2	73
		105	Art of Asia and the Near East	44	35	0.20	4.40	132	660	1	45
		130	Art Appreciation	52	42	0.20	5.20	156	780	1	45
		351	Photography I	23	16	0.34	5.83	175	514	1	27
		665	Gallery Practicum	9	7	0.07	0.90	27	405	1	10
			Intro to the Camera	10	6	0.13	0.61	18	137	1	25
		690	Special Projects	17	15	0.00	0.57	17	#INF	5	25
WA	ART	411	Ceramics I	20	17	0.09	6.00	180	2,118	1	24
		412	Ceramics II	2	2	0.09	0.60	18	212	1	24
		417	Ceramic Glazing Techniques	4	3	0.09	1.20	36	424	1	24
		665	But Where Is the Clay?	6	5	0.09	1.80	54	635	1	24
WB	ART	351	Photography I	15	14	0.12	4.50	135	1,168	1	27
		352	Photography II	5	4	0.11	1.50	45	401	1	27
		353	Photography III	4	3	0.11	1.20	36	321	1	27
WC	ART	354	Color Photography I	17	14	0.17	5.10	153	918	1	27
		355	Color Photography II	6	6	0.17	1.80	54	324	1	27
WD	ART	411	Ceramics I	21	13	0.11	6.30	189	1,654	1	30
		412	Ceramics II	6	5	0.11	1.80	54	477	1	30
		417	Ceramic Glazing Techniques	1	1	0.11	0.30	9	79	1	30
		665	But Where Is the Clay?	2	2	0.09	0.60	18	212	1	30
WE	ART	411	Ceramics I	20	15	0.11	6.00	180	1,575	1	30
		412	Ceramics II	0	0	0.11	0.00	0	0	1	30
		417	Ceramic Glazing Techniques	2	1	0.11	0.60	18	159	1	30
		665	But Where Is the Clay?	5	5	0.09	1.50	45	529	1	30
WF	ART	405	Sculpture I	13	10	0.09	4.16	125	1,357	1	40
		406	Sculpture II	4	4	0.09	1.28	38	417	1	40
		407	Sculpture III: Direct Metal	2	2	0.09	0.64	19	209	1	40
		665	Advanced Technique of Stone Casting	12	11	0.09	3.84	115	1,252	1	40
WH	ART	352	Photography II	15	15	0.12	2.50	75	629	1	27
		353	Photography III	8	8	0.12	1.33	40	335	1	27
WI	ART	204	Drawing I	25	17	0.17	7.50	225	1,350	1	35
		205	Drawing II	4	3	0.17	1.20	36	216	1	35
WY	ART	115	Art, Music and Ideas	27	23	0.10	2.70	81	810	1	45
	MUS.	115	Music, Art and Ideas	20	15	0.10	2.00	60	600	1	45
XA	ART	204	Drawing I	18	14	0.17	4.38	131	788	1	35
		205	Drawing II	5	4	0.17	1.22	37	219	1	35
XB	ART	207	Life Drawing	18	17	0.11	2.88	86	763	1	35
		665	Advanced Life Drawing	14	13	0.11	2.24	67	618	1	35
XD	ART	214	Color	4	3	0.11	1.20	36	318	1	35
		221	Painting I	18	16	0.11	5.40	162	1,446	1	35
		222	Painting II	2	2	0.11	0.60	18	164	1	35

				Census	End of	Art Department					Max
				Headcount	Term	FTEF	FTES	WSCH	Load	Sections	Enroll
				2003/04 to 2007/08							
	MUS.	115	Music, Art and Ideas	17	15	0.10	1.70	51	510	1	45
XA	ART	204	Drawing I	24	19	0.12	5.84	175	1,421	1	35
		205	Drawing II	12	11	0.12	2.92	88	710	1	35
XB	ART	207	Life Drawing	19	13	0.11	3.04	91	805	1	35
		665	Advanced Life Drawing	10	9	0.11	1.60	48	442	1	35
XD	ART	214	Color	14	11	0.12	4.20	126	1,090	1	35
		221	Painting I	20	14	0.11	6.00	180	1,604	1	35
		222	Painting II	0	0	0.11	0.00	0	0	1	35
XE	ART	214	Color	9	7	0.08	1.50	45	584	1	35
		221	Painting I	12	9	0.07	2.00	60	802	1	35
		222	Painting II	9	7	0.07	1.50	45	602	1	35
XO	ART	208	Portrait Drawing I	6	5	0.11	1.80	54	472	1	35
		209	Portrait Drawing II	2	2	0.11	0.60	18	159	1	35
		248	Portraits in Pastel	4	4	0.11	1.20	36	319	1	35
XT	ART	201	Form and Composition I	9	6	0.11	2.10	63	556	1	35
		202	Form and Composition II	1	1	0.11	0.23	7	62	1	35
Fall 2006	ART	101	History of Art I	43	23	0.20	4.30	129	645	1	45
		102	History of Art II	22	13	0.20	2.20	66	330	1	45
		105	Art of Asia/ Near East	28	23	0.20	2.80	84	420	1	30
		214	Color	12	9	0.38	3.60	108	284	1	35
		351	Photography I	24	16	0.22	3.84	115	530	1	27
		665	Black & White Photo Lab	15	15	0.14	1.50	45	321	1	24
			Gallery Practicum	3	3	0.14	0.30	9	64	1	10
			Visual Interpretation of Music	8	6	0.07	0.27	8	120	1	45
		690	Special Projects	14	13	0.00	0.40	12	#INF	5	23
WA	ART	411	Ceramics I	13	12	0.11	3.90	117	1,033	1	30
		412	Ceramics II	5	4	0.11	1.50	45	397	1	30
		417	Ceramic Glazing Techniques	2	1	0.11	0.60	18	159	1	30
		665	Underglazing Techniques	2	2	0.11	0.60	18	159	1	30
WB	ART	351	Photography I	19	16	0.12	5.70	171	1,479	1	27
		352	Photography II	6	6	0.11	1.80	54	481	1	27
		353	Photography III	2	2	0.11	0.60	18	160	1	27
WC	ART	354	Color Photography I	10	10	0.17	3.00	90	540	1	27
		355	Color Photography II	2	2	0.17	0.60	18	108	1	27
WE	ART	411	Ceramics I	10	10	0.11	3.00	90	787	1	30
		412	Ceramics II	5	5	0.11	1.50	45	397	1	30
		417	Ceramic Glazing Techniques	4	4	0.11	1.20	36	318	1	30
		665	Ceramics: Personal Projects	5	5	0.11	1.50	45	397	1	30
WF	ART	405	Sculpture I	11	11	0.09	2.97	89	968	1	40
		406	Sculpture II	2	2	0.09	0.54	16	176	1	40
		407	Sculpture III: Direct Metal	1	1	0.09	0.27	8	88	1	40
		665	Sculpture:LostWaxBronzeCasting	5	5	0.09	1.35	41	440	1	40
WG	ART	405	Sculpture I	12	11	0.05	2.72	82	1,503	1	35
		406	Sculpture II	4	3	0.05	0.91	27	501	1	35
		407	Sculpture III: Direct Metal	4	4	0.05	0.91	27	501	1	35
		665	Sculpture:LostWaxBronzeCasting	6	6	0.05	1.36	41	751	1	35
WH	ART	352	Photography II	6	4	0.11	1.00	30	265	1	24
		353	Photography III	10	7	0.11	1.67	50	441	1	24

				Census	End of	Art Department 2003/04 to 2007/08					Max
				Headcount	Term	FTEF	FTES	WSCH	Load	Sections	Enroll
WI	ART	204	Drawing I	26	25	0.17	6.50	195	1,170	1	35
		205	Drawing II	2	1	0.17	0.50	15	90	1	35
WJ	ART	115	Art, Music and Ideas	38	35	0.10	3.80	114	1,140	1	60
WY	ART	115	Art, Music and Ideas-Honors	31	29	0.10	3.10	93	930	1	45
		MUS. 115	Music, Art and Ideas-Honors	13	10	0.10	1.30	39	390	1	45
XA	ART	204	Drawing I	23	17	0.12	5.60	168	1,362	1	35
		205	Drawing II	6	5	0.12	1.46	44	355	1	35
XB	ART	207	Life Drawing	11	10	0.11	1.76	53	466	1	35
		665	Advanced Life Drawing	10	8	0.11	1.60	48	442	1	35
XD	ART	221	Painting I	21	17	0.17	5.25	158	945	1	35
		222	Painting II	1	1	0.17	0.25	8	45	1	35
XE	ART	214	Color	4	4	0.08	0.67	20	259	1	35
		221	Painting I	16	14	0.07	2.67	80	1,070	1	35
		222	Painting II	6	4	0.07	1.00	30	401	1	35
XO	ART	208	Portrait Drawing I	19	15	0.08	5.70	171	2,053	1	35
		209	Portrait Drawing II	2	2	0.08	0.50	15	180	1	35
		248	Portraits in Pastel	4	3	0.08	1.00	30	360	1	35
		665	Exploration in Portraiture	5	5	0.08	1.50	45	540	1	35
Fall 2007	ART	101	History of Art I	41	36	0.20	4.10	123	615	1	45
		102	History of Art II	24	17	0.20	2.40	72	360	1	45
		105	Art of Asia/ Near East	53	35	0.20	5.30	159	795	1	45
		107	Art of Our Times	28	18	0.20	2.80	84	420	1	45
		351	Photography I	30	23	0.22	4.80	144	663	1	27
		665S	Black & White Photo Lab	13	12	0.14	1.30	39	279	1	24
		665S	Gallery Practicum	3	1	0.14	0.30	9	64	1	10
		665S	Matting and Framing	17	16	0.03	0.32	9	315	1	25
		690	Special Projects	19	17	0.00	1.13	34	#INF	5	35
WA	ART	411	Ceramics I	23	17	0.09	6.90	207	2,435	1	30
		412	Ceramics II	4	4	0.09	1.20	36	424	1	30
		417	Ceramic Glazing Techniques	2	2	0.09	0.60	18	212	1	30
		665S	Underglazing Techniques	3	3	0.09	0.90	27	318	1	30
WB	ART	351	Photography I	18	11	0.12	5.40	162	1,401	1	27
		352	Photography II	3	3	0.11	0.90	27	241	1	27
		353	Photography III	2	1	0.11	0.60	18	160	1	27
WC	ART	354	Color Photography I	10	7	0.17	3.00	90	540	1	27
		355	Color Photography II	2	0	0.17	0.60	18	108	1	27
WE	ART	411	Ceramics I	8	7	0.11	2.40	72	630	1	30
		412	Ceramics II	6	6	0.11	1.80	54	477	1	30
		417	Ceramic Glazing Techniques	6	6	0.11	1.80	54	477	1	30
		665S	Ceramic Surface Techniques	12	12	0.11	3.60	108	953	1	30
WF	ART	405	Sculpture I	6	4	0.09	1.92	58	626	1	40
		406	Sculpture II	3	3	0.09	0.96	29	313	1	40
		407	Sculpture III: Direct Metal	4	4	0.09	1.28	38	417	1	40
		665S	Lost Wax Bronze Casting	3	3	0.09	0.96	29	313	1	40
WG	ART	405	Sculpture I	7	6	0.05	1.12	34	619	1	35
		406	Sculpture II	10	10	0.05	1.60	48	884	1	35
		407	Sculpture III: Direct Metal	2	2	0.05	0.32	10	177	1	35
		665S	Advanced Marble Carving	5	5	0.05	0.80	24	442	1	35

				Census	End of	Art Department 2003/04 to 2007/08					Max
				Headcount	Term	FTEF	FTE\$	WSCH	Load	Sections	Enroll
WH	ART	352	Photography II	7	7	0.11	1.12	34	297	1	24
		353	Photography III	2	2	0.11	0.32	10	85	1	24
WI	ART	204	Drawing I	30	26	0.17	9.00	270	1,620	1	35
		205	Drawing II	2	2	0.17	0.60	18	108	1	35
WK	ART	354	Color Photography I	6	4	0.15	0.96	29	192	1	27
		355	Color Photography II	1	0	0.15	0.16	5	32	1	27
WS	ART	231	Watercolor I	11	11	0.17	3.30	99	582	1	35
		232	Watercolor II	2	1	0.17	0.60	18	106	1	35
WY	ART	115	Art, Music and Ideas-Honors	28	24	0.10	2.80	84	840	1	45
		MUS. 115	Music, Art and Ideas-Honors	7	7	0.10	0.70	21	210	1	45
XA	ART	204	Drawing I	36	29	0.12	6.36	191	1,547	1	35
		205	Drawing II	4	3	0.12	0.71	21	172	1	35
XB	ART	207	Life Drawing	23	15	0.11	3.68	110	1,016	1	35
		665S	Advanced Life Drawing	6	6	0.11	0.96	29	265	1	35
XD	ART	214	Color	11	7	0.11	3.30	99	874	1	35
		221	Painting I	19	17	0.11	5.70	171	1,509	1	35
		222	Painting II	2	1	0.11	0.60	18	159	1	35
XE	ART	214	Color	6	6	0.08	1.00	30	389	1	35
		221	Painting I	12	9	0.07	2.00	60	802	1	35
		222	Painting II	7	5	0.07	1.17	35	468	1	35
XH	ART	201	Form and Composition I	22	14	0.17	6.60	198	1,165	1	35
		202	Form and Composition II	1	1	0.17	0.30	9	53	1	35
XO	ART	208	Portrait Drawing I	11	8	0.09	3.30	99	1,165	1	35
		209	Portrait Drawing II	11	11	0.09	3.30	99	1,165	1	35
		248	Portraits in Pastel	3	2	0.09	0.90	27	318	1	35
		665S	Exploring Portraiture	4	4	0.09	1.20	36	424	1	35
Spring 2004	ART	101	History of Art I	65	48	0.40	6.50	195	488	2	90
		102	History Of Art II	30	23	0.20	3.00	90	450	1	45
		120	Art Of The Americas	40	29	0.20	4.00	120	600	1	45
		351	Photography I	21	18	0.34	6.30	189	556	1	27
		665	Gallery Practicum	9	6	0.07	0.30	9	135	1	25
			Matting and Framing	20	18	0.07	0.51	15	230	1	20
690	Special Projects	12	11	0.00	0.45	14	#INF	4	25		
WD	ART	115	Art, Music And Ideas	25	20	0.10	2.50	75	750	1	50
		MUS. 115	Music, Art And Ideas	20	15	0.10	2.00	60	600	1	50
WE	ART	208	Portrait Drawing I	10	10	0.08	2.33	70	920	1	35
		209	Portrait Drawing II	5	3	0.07	1.17	35	468	1	35
		248	Portraits in Pastel	7	7	0.07	1.63	49	655	1	35
		665	Personality in Portraiture	4	4	0.00	0.93	28	#INF	1	35
WF	ART	204	Drawing I	32	26	0.17	9.60	288	1,728	1	35
		205	Drawing II	5	4	0.17	1.50	45	270	1	35
WG	ART	204	Drawing I	22	15	0.17	6.60	198	1,188	1	35
		205	Drawing II	2	1	0.17	0.60	18	108	1	35
WJ	ART	214	Color	8	7	0.11	2.40	72	635	1	35
		221	Painting I	16	14	0.11	4.80	144	1,271	1	35
		222	Painting II	3	3	0.11	0.90	27	238	1	35
WK	ART	214	Color	2	0	0.08	0.27	8	104	1	35
		221	Painting I	21	12	0.07	2.80	84	1,123	1	35

		Census	End of	Art Department					Max				
		Headcount	Term	FTEF	FTES	WSCH	Load	Sections	Enroll				
							2003/04 to 2007/08						
		222	Painting II	8	7	0.07	1.07	32	428	1	35		
WL	ART	214	Color	10	9	0.08	2.33	70	920	1	35		
		221	Painting I	17	13	0.07	3.97	119	1,591	1	35		
		222	Painting II	5	5	0.07	1.17	35	468	1	35		
WO	ART	351	Photography I	12	10	0.11	3.60	108	953	1	27		
		352	Photography II	5	5	0.11	1.50	45	409	1	27		
		353	Photography III	7	7	0.11	2.10	63	573	1	27		
WP	ART	352	Photography II	12	10	0.11	2.80	84	741	1	27		
		353	Photography III	12	11	0.11	2.80	84	741	1	27		
WQ	ART	354	Color Photography I	11	7	0.17	3.30	99	594	1	27		
		355	Color Photography II	3	3	0.17	0.90	27	162	1	27		
WR	ART	354	Color Photography I	17	9	0.17	2.83	85	510	1	27		
		355	Color Photography II	3	3	0.17	0.50	15	90	1	27		
WT	ART	405	Sculpture I	13	11	0.08	3.90	117	1,405	1	35		
		406	Sculpture II	4	4	0.08	1.20	36	432	1	35		
		407	Sculpture III: Direct Metal	2	2	0.08	0.60	18	216	1	35		
		665	Sculptue: The Portrait Head	13	13	0.08	3.90	117	1,405	1	35		
WU	ART	411	Ceramics I	15	12	0.09	4.50	135	1,588	1	35		
		412	Ceramics II	1	1	0.09	0.30	9	106	1	35		
		417	Ceramic Glazing Techniques	7	5	0.09	2.10	63	741	1	35		
		665	Ceramics: But It's Not Real	8	8	0.09	3.20	96	1,129	1	35		
WW	ART	411	Ceramics I	16	12	0.09	4.80	144	1,694	1	35		
		412	Ceramics II	5	1	0.09	1.50	45	529	1	35		
		417	Ceramic Glazing Techniques	0	0	0.11	0.00	0	0	1	35		
		665	Ceramics: But It's Not Real	9	8	0.09	2.70	81	953	1	35		
XI	ART	231	Watercolor I	16	14	0.11	3.73	112	989	1	35		
		232	Watercolor II	5	4	0.11	1.17	35	309	1	35		
XQ	ART	207	Life Drawing	15	12	0.17	4.50	135	794	1	35		
		665	Life Drawing Exploration	10	10	0.17	3.00	90	529	1	35		
XZ	ART	301	Design	26	16	0.17	7.80	234	1,376	1	35		
		302	Advanced Design	0	0	0.17	0.00	0	0	1	35		
Spring 2005	ART	101	History of Art I	89	68	0.40	8.90	267	668	2	90		
		102	History Of Art II	45	36	0.20	4.50	135	675	1	45		
		120	Art Of The Americas	37	22	0.20	3.70	111	555	1	45		
		351	Photography I	29	24	0.34	8.70	261	768	1	27		
		665	Basic Lighting Techniques	23	18	0.09	0.71	21	238	1	27		
			Critical Interpretation of Art	12	10	0.13	0.80	24	180	1	25		
			Dark Room Workshop	19	19	0.14	1.77	53	380	1	27		
			Gallery Practicum	7	4	0.07	0.23	7	105	1	25		
			Intensive Painting Studio	14	13	0.07	5.60	168	2,400	1	30		
				690	Special Projects	22	15	0.07	0.00	0	0	1	20
				690	Special Projects	20	20	0.00	0.47	14	#INF	5	30
WD	ART	115	Art, Music And Ideas	22	19	0.10	2.20	66	660	1	50		
	MUS.	115	Music, Art And Ideas	12	10	0.10	1.20	36	360	1	50		
WE	ART	208	Portrait Drawing I	19	15	0.08	4.43	133	1,748	1	35		
		209	Portrait Drawing II	4	4	0.07	0.93	28	374	1	35		
		248	Portraits in Pastel	5	4	0.07	1.17	35	468	1	35		
		665	Personality in Portraiture	9	9	0.00	2.10	63	#INF	1	35		

				Census	End of	Art Department 2003/04 to 2007/08					Max
				Headcount	Term	FTEF	FTES	WSCH	Load	Sections	Enroll
WF	ART	204	Drawing I	25	17	0.17	7.50	225	1,350	1	35
		205	Drawing II	5	3	0.17	1.50	45	270	1	35
WG	ART	204	Drawing I	32	23	0.11	7.47	224	1,977	1	35
		205	Drawing II	3	2	0.11	0.70	21	185	1	35
WJ	ART	214	Color	13	12	0.11	3.90	117	1,033	1	35
		221	Painting I	17	13	0.11	5.10	153	1,350	1	35
		222	Painting II	2	2	0.11	0.60	18	159	1	35
WK	ART	214	Color	2	1	0.08	0.40	12	156	1	35
		221	Painting I	13	7	0.07	2.60	78	1,043	1	35
		222	Painting II	4	4	0.07	0.80	24	321	1	35
WO	ART	351	Photography I	16	13	0.11	4.80	144	1,271	1	27
		352	Photography II	3	2	0.11	0.90	27	245	1	27
		353	Photography III	2	1	0.11	0.60	18	164	1	27
WP	ART	352	Photography II	3	2	0.11	0.70	21	185	1	27
		353	Photography III	8	8	0.11	1.87	56	494	1	27
WQ	ART	354	Color Photography I	12	11	0.17	3.60	108	648	1	27
		355	Color Photography II	7	7	0.17	2.10	63	378	1	27
WR	ART	354	Color Photography I	14	12	0.11	2.33	70	618	1	27
		355	Color Photography II	6	5	0.11	1.00	30	265	1	27
WT	ART	405	Sculpture I	16	10	0.06	3.63	109	1,919	1	35
		406	Sculpture II	5	4	0.06	1.13	34	600	1	35
		407	Sculpture III: Direct Metal	5	5	0.06	1.13	34	600	1	35
		665	Figures	15	13	0.06	3.40	102	1,799	1	35
WU	ART	411	Ceramics I	17	15	0.09	5.10	153	1,800	1	35
		412	Ceramics II	5	5	0.09	1.50	45	529	1	35
		417	Ceramic Glazing Techniques	3	3	0.09	0.90	27	318	1	35
		665	Clay on the Table	5	5	0.09	2.00	60	706	1	35
WW	ART	411	Ceramics I	20	17	0.09	6.00	180	2,118	1	35
		412	Ceramics II	5	5	0.09	1.50	45	529	1	35
		417	Ceramic Glazing Techniques	2	1	0.11	0.60	18	164	1	35
		665	Clay on the Table	5	5	0.09	1.50	45	529	1	35
XI	ART	231	Watercolor I	12	10	0.11	2.80	84	741	1	35
		232	Watercolor II	3	3	0.11	0.70	21	185	1	35
XQ	ART	207	Life Drawing	14	11	0.17	4.20	126	741	1	35
		665	Advanced Techniques	7	6	0.17	2.10	63	371	1	35
XZ	ART	301	Design	24	20	0.17	7.20	216	1,271	1	35
		302	Advanced Design	2	2	0.17	0.60	18	108	1	35
Spring 2006	ART	101	History of Art I	38	30	0.20	3.80	114	570	1	45
		102	History Of Art II	35	32	0.20	3.50	105	525	1	45
		130	Art Appreciation	31	27	0.20	3.10	93	465	1	45
		351	Photography I	18	15	0.23	4.20	126	556	1	27
		665	Basic Lighting Techniques	9	9	0.09	0.51	15	171	1	27
			Dark Room Workshop	13	9	0.14	1.52	46	325	1	27
			Digital Photography	27	22	0.09	1.54	46	514	1	27
			Intensive Painting Studio	13	13	0.07	0.58	17	250	1	30
690	Special Projects	13	13	0.00	0.23	7	#INF	4	20		
WA	ART	405	Sculpture I	6	3	0.08	1.80	54	648	1	35
		406	Sculpture II	3	3	0.08	0.90	27	324	1	35

		Census	End of	Art Department					Max		
		Headcount	Term	FTEF	FTES	WSCH	Load	Sections	Enroll		
							2003/04 to 2007/08				
		407	Sculpture III: Direct Metal	4	4	0.08	1.20	36	432	1	35
		665	Sculpture: Portraits in Clay	9	9	0.08	2.70	81	972	1	35
WB	ART	411	Ceramics I	21	16	0.09	6.30	189	2,224	1	35
		412	Ceramics II	3	2	0.09	0.90	27	318	1	35
		417	Ceramic Glazing Techniques	1	1	0.09	0.30	9	106	1	35
		665	Ceramics: My Dining Table	5	5	0.09	51.00	1,530	#####	1	35
WD	ART	115	Art, Music And Ideas	32	25	0.10	3.20	96	960	1	50
	MUS.	115	Music, Art And Ideas	16	15	0.10	1.60	48	480	1	50
WE	ART	208	Portrait Drawing I	12	9	0.08	2.80	84	1,104	1	35
		209	Portrait Drawing II	5	5	0.07	1.17	35	468	1	35
		248	Portraits in Pastel	4	3	0.07	0.93	28	374	1	35
		665	Individuality in Portraiture	6	6	0.07	1.40	42	561	1	35
WF	ART	204	Drawing I	26	21	0.17	7.80	234	1,404	1	35
		205	Drawing II	5	4	0.17	1.50	45	270	1	35
WG	ART	204	Drawing I	27	15	0.11	6.30	189	1,668	1	35
		205	Drawing II	3	3	0.11	0.70	21	185	1	35
WJ	ART	214	Color	16	12	0.11	4.80	144	1,271	1	35
		221	Painting I	13	7	0.11	3.90	117	1,033	1	35
		222	Painting II	1	1	0.11	0.30	9	79	1	35
WK	ART	214	Color	5	3	0.08	0.83	25	324	1	35
		221	Painting I	14	13	0.07	2.33	70	936	1	35
		222	Painting II	9	9	0.07	1.50	45	602	1	35
		690	Special Projects	2	2	0.00	0.13	4	#INF	1	35
WO	ART	351	Photography I	17	13	0.11	5.10	153	1,350	1	31
		352	Photography II	2	2	0.11	0.60	18	164	1	31
		353	Photography III	3	3	0.11	0.90	27	245	1	31
WP	ART	352	Photography II	16	14	0.11	3.73	112	989	1	27
		353	Photography III	5	5	0.11	1.17	35	309	1	27
WQ	ART	354	Color Photography I	13	9	0.17	3.90	117	702	1	27
		355	Color Photography II	2	2	0.17	0.60	18	108	1	27
WR	ART	354	Color Photography I	16	8	0.11	2.67	80	706	1	27
		355	Color Photography II	3	3	0.11	0.50	15	132	1	27
WT	ART	405	Sculpture I	13	10	0.06	2.95	88	1,559	1	35
		406	Sculpture II	8	8	0.06	1.81	54	959	1	35
		407	Sculpture III: Direct Metal	4	4	0.06	0.91	27	480	1	35
		665	Sculpture: Portraits in Clay	8	7	0.06	1.81	54	959	1	35
WU	ART	411	Ceramics I	7	6	0.09	2.10	63	741	1	35
		412	Ceramics II	2	2	0.09	0.60	18	212	1	35
		417	Ceramic Glazing Techniques	5	4	0.09	1.50	45	529	1	35
		665	Ceramics: My Dining Table	8	7	0.09	3.20	96	1,129	1	35
WW	ART	411	Ceramics I	16	15	0.09	4.80	144	1,694	1	35
		412	Ceramics II	4	4	0.09	1.20	36	424	1	35
		417	Ceramic Glazing Techniques	0	0	0.09	0.00	0	0	1	35
		665	Ceramics: My Dining Table	8	6	0.09	2.40	72	847	1	35
XI	ART	231	Watercolor I	4	2	0.11	0.93	28	247	1	35
		232	Watercolor II	5	4	0.11	1.17	35	309	1	35
XQ	ART	207	Life Drawing	15	11	0.17	4.50	135	794	1	35
		665	Life Drawing-Adv. Techniques	4	3	0.17	1.20	36	212	1	35

				Census	End of	Art Department 2003/04 to 2007/08					Max	
				Headcount	Term	FTEF	FTES	WSCH	Load	Sections	Enroll	
Spring 2007	XZ	ART	301	Design	24	21	0.17	7.20	216	1,271	1	35
			302	Advanced Design	0	0	0.17	0.00	0	0	1	35
	ART	101	History of Art I	49	36	0.40	4.90	147	368	2	75	
		102	History Of Art II	26	20	0.20	2.60	78	390	1	45	
		120	Art of the Americas	30	22	0.20	3.00	90	450	1	45	
		130	Art Appreciation	68	51	0.40	7.10	213	533	2	90	
		351	Photography I	25	22	0.23	5.83	175	772	1	27	
		665	FundamentalDigital Photography	25	15	0.09	1.43	43	476	1	27	
		SA	Fundamentals-Digital Photo	20	12	0.11	1.33	40	353	1	27	
		665S	Black & White Photo Lab	11	10	0.14	1.10	33	236	1	27	
		665S	Basic Lighting Techniques	16	12	0.09	0.91	27	305	1	27	
		665S	Gallery Practicum	6	5	0.14	0.60	18	129	1	10	
		665S	Intensive Painting Studio	12	11	0.07	0.36	11	153	1	30	
		690	Special Projects	23	21	0.00	0.72	22	#INF	6	65	
WA	ART	405	Sculpture I	6	5	0.08	1.56	47	562	1	35	
		406	Sculpture II	4	4	0.08	1.04	31	375	1	35	
		407	Sculpture III: Direct Metal	0	0	0.08	0.00	0	0	1	35	
		665S	Sculpture:Lost Wax Bronze Cast	10	10	0.08	3.10	93	1,116	1	35	
WB	ART	411	Ceramics I	19	18	0.09	5.70	171	2,012	1	35	
		412	Ceramics II	3	3	0.09	0.90	27	318	1	35	
		417	Ceramic Glazing Techniques	1	1	0.09	0.30	9	106	1	35	
		665S	Ceramics	3	3	0.09	0.90	27	318	1	35	
WC	ART	208	Portrait Drawing I	18	16	0.11	5.40	162	1,430	1	35	
		209	Portrait Drawing II	4	4	0.11	1.20	36	318	1	35	
		248	Portraits in Pastel	4	4	0.11	1.20	36	318	1	35	
		665S	Exploring Portraiture	4	3	0.11	1.20	36	318	1	35	
WE	ART	208	Portrait Drawing I	11	9	0.08	2.57	77	1,012	1	35	
		209	Portrait Drawing II	3	3	0.07	0.70	21	281	1	35	
		248	Portraits in Pastel	0	0	0.07	0.00	0	0	1	35	
		665S	Behind the Face	7	6	0.07	1.63	49	655	1	35	
WF	ART	204	Drawing I	18	13	0.17	5.40	162	972	1	35	
		205	Drawing II	0	0	0.17	0.00	0	0	1	35	
WG	ART	204	Drawing I	25	17	0.11	5.83	175	1,545	1	35	
		205	Drawing II	4	3	0.11	0.93	28	247	1	35	
WJ	ART	214	Color	1	1	0.11	0.30	9	79	1	35	
		221	Painting I	12	11	0.11	3.60	108	953	1	35	
		222	Painting II	0	0	0.11	0.00	0	0	1	35	
WK	ART	214	Color	14	12	0.08	2.33	70	908	1	35	
		221	Painting I	11	10	0.07	1.83	55	735	1	35	
		222	Painting II	10	6	0.07	1.67	50	668	1	35	
WO	ART	351	Photography I	18	15	0.11	5.40	162	1,430	1	27	
		352	Photography II	6	4	0.11	1.80	54	491	1	27	
		353	Photography III	3	3	0.11	0.90	27	245	1	27	
WP	ART	352	Photography II	5	2	0.11	1.17	35	309	1	27	
		353	Photography III	4	4	0.11	0.93	28	247	1	27	
WQ	ART	354	Color Photography I	9	6	0.17	2.70	81	486	1	27	
		355	Color Photography II	4	2	0.17	1.20	36	216	1	27	
WR	ART	354	Color Photography I	14	8	0.06	2.33	70	1,235	1	27	

		Census	End of	Art Department					Max			
		Headcount	Term	FTEF	FTES	WSCH	Load	Sections	Enroll			
							2003/04 to 2007/08					
		355	Color Photography II	2	1	0.06	0.33	10	176	1	27	
WT	ART	405	Sculpture I	5	4	0.06	1.13	34	600	1	35	
		406	Sculpture II	8	8	0.06	1.81	54	959	1	35	
		407	Sculpture III: Direct Metal	0	0	0.06	0.00	0	0	1	35	
		665S	Sculpture:Figurative Sculpture	7	6	0.06	1.59	48	840	1	35	
WW	ART	411	Ceramics I	23	22	0.09	6.90	207	2,435	1	35	
		412	Ceramics II	5	5	0.09	1.50	45	529	1	35	
		417	Ceramic Glazing Techniques	4	3	0.09	1.20	36	424	1	35	
		665S	Ceramics	7	7	0.09	2.10	63	741	1	35	
XQ	ART	207	Life Drawing	9	7	0.17	2.70	81	476	1	35	
		665S	Advanced Life Drawing	4	4	0.17	1.20	36	212	1	35	
XZ	ART	301	Design	21	16	0.17	6.30	189	1,112	1	35	
		302	Advanced Design	3	2	0.17	0.90	27	162	1	35	
Spring 2008	ART	101	History of Art I	45	29	0.20	4.50	135	675	1	45	
			History of Art I - Honors	16	13	0.20	1.60	48	240	1	30	
		102	History Of Art II	34	31	0.20	3.40	102	510	1	45	
		120	Art of the Americas	24	13	0.20	2.40	72	360	1	45	
		130	Art Appreciation	78	69	0.40	8.10	243	608	2	90	
		351	Photography I	27	23	0.23	6.30	189	834	1	27	
		665S	FundamentalDigital Photography	27	22	0.09	1.54	46	514	1	27	
		665S	Black & White Photo Lab	8	8	0.14	0.80	24	171	1	27	
		665S	Basic Lighting Techniques	11	7	0.09	0.63	19	210	1	27	
		665S	Gallery Practicum	4	1	0.14	0.40	12	86	1	10	
		665S	Intensive Painting Studio	20	19	0.07	0.00	0	0	1	30	
		665S	Matting and Framing	13	12	0.03	0.28	8	281	1	25	
		690	Special Projects	23	21	0.00	0.75	23	#INF	6	65	
	WA	ART	405	Sculpture I	12	12	0.08	3.84	115	1,383	1	35
			406	Sculpture II	2	2	0.08	0.64	19	230	1	35
		407	Sculpture III: Direct Metal	4	4	0.08	1.28	38	461	1	35	
		665S	Sculpture:Lost Wax Bronze Cast	4	3	0.08	1.28	38	461	1	35	
WB	ART	411	Ceramics I	19	17	0.09	5.70	171	2,012	1	35	
		412	Ceramics II	1	1	0.09	0.30	9	106	1	35	
		417	Ceramic Glazing Techniques	2	2	0.09	0.60	18	212	1	35	
		665S	Ceramics: Modern Art Glazing	3	3	0.09	0.90	27	318	1	35	
WC	ART	208	Portrait Drawing I	5	3	0.11	1.50	45	397	1	35	
		209	Portrait Drawing II	8	8	0.11	2.40	72	635	1	35	
		248	Portraits in Pastel	5	4	0.11	1.25	38	331	1	35	
		665S	Exploring Portraiture	2	2	0.11	0.50	15	132	1	35	
WD	ART	115	Art, Music And Ideas	26	17	0.10	2.60	78	780	1	45	
	MUS.	115	Music, Art And Ideas	9	5	0.10	0.90	27	270	1	45	
WE	ART	208	Portrait Drawing I	9	7	0.08	2.10	63	828	1	35	
		209	Portrait Drawing II	5	3	0.07	1.17	35	468	1	35	
		248	Portraits in Pastel	3	2	0.07	0.70	21	281	1	35	
		665S	Portraiture: The Essential Sel	7	6	0.07	1.63	49	655	1	35	
WF	ART	204	Drawing I	28	25	0.17	8.40	252	1,512	1	35	
		205	Drawing II	2	2	0.17	0.60	18	108	1	35	
WG	ART	204	Drawing I	20	16	0.11	4.67	140	1,236	1	35	
		205	Drawing II	1	1	0.11	0.23	7	62	1	35	

				Census	End of	Art Department					Max
				Headcount	Term	FTEF	FTES	WSCH	Load	Sections	Enroll
				2003/04 to 2007/08							
WJ	ART	214	Color	16	14	0.11	4.80	144	1,271	1	35
		221	Painting I	14	10	0.11	4.20	126	1,112	1	35
		222	Painting II	4	1	0.11	1.20	36	318	1	35
WK	ART	214	Color	9	7	0.08	1.50	45	584	1	35
		221	Painting I	14	12	0.07	2.33	70	936	1	35
		222	Painting II	13	13	0.07	2.17	65	869	1	35
WO	ART	351	Photography I	21	18	0.11	5.25	158	1,432	1	27
		352	Photography II	3	3	0.11	0.90	27	245	1	27
		353	Photography III	1	1	0.11	0.30	9	82	1	27
WP	ART	352	Photography II	11	10	0.11	2.57	77	680	1	27
		353	Photography III	6	6	0.11	1.40	42	371	1	27
WQ	ART	354	Color Photography I	11	10	0.17	3.30	99	594	1	27
		355	Color Photography II	1	1	0.17	0.30	9	54	1	27
WR	ART	354	Color Photography I	11	11	0.06	1.83	55	970	1	27
		355	Color Photography II	1	0	0.06	0.17	5	88	1	27
WT	ART	405	Sculpture I	9	8	0.06	2.04	61	1,079	1	35
		406	Sculpture II	6	5	0.06	1.36	41	720	1	35
		407	Sculpture III: Direct Metal	4	3	0.06	0.91	27	480	1	35
		665S	Sculpture: Portraits in Clay	7	6	0.06	1.59	48	840	1	35
WW	ART	411	Ceramics I	9	9	0.09	2.70	81	953	1	35
		412	Ceramics II	14	12	0.09	4.20	126	1,482	1	35
		417	Ceramic Glazing Techniques	4	4	0.09	1.20	36	424	1	35
		665S	Ceramics: Surfaces & Firings	11	11	0.09	3.30	99	1,165	1	35
XI	ART	231	Watercolor I	11	10	0.12	1.76	53	452	1	35
		232	Watercolor II	7	6	0.12	1.12	34	288	1	35
XQ	ART	207	Life Drawing	18	15	0.17	5.40	162	953	1	35
		665S	Advanced Life Drawing	1	1	0.17	0.30	9	53	1	35
XU	ART	204	Drawing I	26	21	0.17	7.80	234	1,404	1	35
		205	Drawing II	3	2	0.17	0.90	27	162	1	35
XZ	ART	301	Design	23	21	0.17	6.90	207	1,218	1	35
		302	Advanced Design	0	0	0.17	0.00	0	0	1	35
Summer 2003	ART	130	Art Appreciation	52	45	0.20	5.47	164	820	1	45
		351	Photography I	24	22	0.23	3.33	100	440	1	27
		665	Raku & Low Fire Ceramics	28	22	0.18	3.46	104	576	1	30
			Stone Carving	36	26	0.23	2.74	82	363	1	30
		690	Special Projects	4	4	0.00	0.20	6	#INF	3	15
WB	ART	204	Drawing I	26	21	0.11	3.96	119	1,049	1	35
		205	Drawing II	2	2	0.11	0.30	9	81	1	35
WC	ART	214	Color	7	7	0.08	1.30	39	514	1	35
		221	Painting I	16	15	0.08	2.96	89	1,176	1	35
		222	Painting II	5	5	0.08	0.91	27	361	1	35
WE	ART	405	Sculpture I	17	14	0.06	5.36	161	2,837	1	35
		406	Sculpture II	2	2	0.06	0.63	19	334	1	35
		407	Sculpture III: Direct Metal	0	0	0.06	0.00	0	0	1	35
		665	Relief Casting in Bronze	7	7	0.06	2.21	66	1,168	1	35
WK	ART	351	Photography I	22	22	0.21	6.56	197	950	1	27
Summer 2004	ART	130	Art Appreciation	52	44	0.20	5.24	157	786	1	45
		351	Photography I	55	51	0.43	12.10	363	836	2	54

		Census	End of	Art Department					Max		
		Headcount	Term	FTEF	FTES	WSCH	Load	Sections	Enroll		
							2003/04 to 2007/08				
		665	Raku & Low Fire Ceramics	28	24	0.18	6.89	207	1,148	1	30
			Stone Carving	27	21	0.23	2.06	62	272	1	30
		690	Special Projects	1	1	0.00	0.02	1	#INF	3	15
WB	ART	204	Drawing I	27	21	0.11	4.11	123	1,089	1	35
		205	Drawing II	7	6	0.11	1.07	32	282	1	35
WC	ART	214	Color	9	9	0.08	1.67	50	661	1	35
		221	Painting I	17	14	0.08	3.15	94	1,249	1	35
		222	Painting II	6	6	0.08	1.09	33	433	1	35
WD	ART	115	Art, Music and Ideas	28	26	0.10	2.82	85	846	1	45
	MUS.	115	Music, Art and Ideas	18	16	0.10	1.81	54	544	1	45
WE	ART	405	Sculpture I	6	6	0.06	1.81	54	960	1	35
		406	Sculpture II	1	1	0.06	0.30	9	160	1	35
		407	Sculpture III: Direct Metal	1	1	0.06	0.30	9	160	1	35
		665	Relief Casting in Bronze	11	11	0.06	3.33	100	1,759	1	35
Summer 2005	ART	130	Art Appreciation	42	37	0.20	4.23	127	635	1	45
		351	Photography I	57	51	0.43	12.37	371	855	2	54
		665	Photo Lab	29	23	0.09	1.68	50	581	1	27
			Raku & Low Fire Ceramics	11	9	0.18	2.71	81	451	1	30
			Working With Stone	25	15	0.23	1.90	57	252	1	30
		690	Special Projects	0	0	0.00				2	10
WB	ART	204	Drawing I	28	25	0.11	4.27	128	1,130	1	35
		205	Drawing II	5	2	0.11	0.76	23	202	1	35
WC	ART	214	Color	9	9	0.08	1.67	50	661	1	35
		221	Painting I	20	13	0.08	3.70	111	1,469	1	35
		222	Painting II	4	4	0.08	0.73	22	288	1	35
WD	ART	115	Art, Music and Ideas	35	30	0.10	3.53	106	1,058	1	45
	MUS.	115	Music, Art and Ideas	8	7	0.10	0.81	24	242	1	45
WE	ART	405	Sculpture I	6	5	0.06	1.81	54	960	1	35
		406	Sculpture II	0	0	0.06	0.00	0	0	1	35
		407	Sculpture III: Direct Metal	1	1	0.06	0.30	9	160	1	35
		665	Bronze Casting Techniques	4	3	0.06	1.21	36	640	1	35
WF	ART	204	Drawing I	25	20	0.17	2.52	76	453	1	35
		205	Drawing II	7	6	0.17	0.71	21	127	1	35
Summer 2006	ART	130	Art Appreciation	16	14	0.20	1.51	45	226	1	45
		351	Photography I	38	36	0.43	7.77	233	537	2	54
		665	Introduction to Stone Carving	23	20	0.23	1.75	53	232	1	30
			Photo Lab	23	20	0.09	1.33	40	461	1	27
			Raku & Low Fire Ceramics	26	22	0.18	6.40	192	1,066	1	30
		690	Special Projects	1	0	0.00	0.02	1	#INF	2	10
WB	ART	204	Drawing I	22	20	0.11	3.02	91	799	1	35
		205	Drawing II	2	1	0.11	0.27	8	73	1	35
WD	ART	115	Art, Music and Ideas	14	11	0.10	1.32	40	395	1	45
	MUS.	115	Music, Art and Ideas	3	3	0.10	0.28	8	85	1	45
WE	ART	405	Sculpture I	9	8	0.06	2.72	82	1,439	1	35
		406	Sculpture II	0	0	0.06	0.00	0	0	1	35
		407	Sculpture III: Direct Metal	1	1	0.06	0.30	9	160	1	35
		665	Bronze Casting Techniques	8	8	0.06	2.42	73	1,280	1	35
WF	ART	204	Drawing I	28	24	0.17	4.42	132	795	1	35

