

Department Success and Retention

Art Department
2003/04 to 2007/08

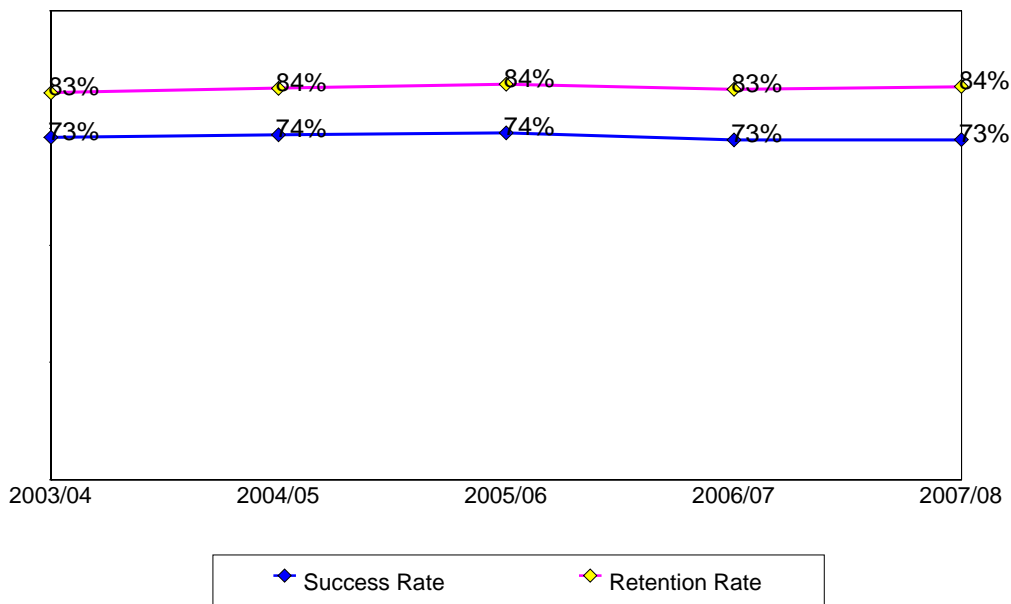
This report contains success and retention rates by various demographic segments and by course. Annual data are an aggregate of the fall and spring semesters. The following parameters have been applied:

- Success Counts: Number of students with A,B,C,CR grades.
- Success Rate: The percentage of students who complete a course with a grade of A,B,C,CR out of total enrollments.
- Retention Counts: Number of students with A,B,C,D,F,CR,NC, I grades.
- Retention Rate: The percentage of students who complete a course with a grade of A,B,C,D,F,CR,NC, I out of total headcount.

Annual Success and Retention

	Headcount	Success Count	Success Rate	Retention Count	Retention Rate
2003/04	1,283	937	73%	1,059	83%
2004/05	1,322	973	74%	1,104	84%
2005/06	1,209	895	74%	1,020	84%
2006/07	1,176	853	73%	979	83%
2007/08	1,389	1,008	73%	1,165	84%
Change from 2006/07 to 2007/08	213	155	0%	186	1%
Totals & Averages	6,379	4,666	73%	5,327	84%

Annual (Fall/Spring) Success and Retention Rates



Source: SMCCCD Data Warehouse

Success and Retention By Term

	Headcount	Success Count	Success Rate	Retention Count	Retention Rate
Fall 2003	656	485	74%	548	84%
Fall 2004	619	446	72%	519	84%
Fall 2005	586	434	74%	496	85%
Fall 2006	536	389	73%	450	84%
Fall 2007	616	442	72%	506	82%
Spring 2004	627	452	72%	511	81%
Spring 2005	703	527	75%	585	83%
Spring 2006	623	461	74%	524	84%
Spring 2007	640	464	73%	529	83%
Spring 2008	773	566	73%	659	85%
Totals & Averages	6,379	4,666	73%	5,327	84%

Grade Distribution

	A		B		C		CR		D		F		NC		W	
Fall 2003	202	33%	116	20%	55	9%	85	10%	17	3%	37	6%	9	1%	103	17%
Fall 2004	203	36%	91	16%	48	9%	70	8%	19	4%	43	8%	9	1%	97	18%
Fall 2005	163	28%	91	18%	57	12%	95	14%	13	3%	32	7%	15	2%	82	17%
Fall 2006	161	33%	73	16%	49	10%	78	12%	7	1%	42	9%	8	2%	84	17%
Fall 2007	200	35%	101	19%	41	8%	75	8%	18	4%	29	5%	11	1%	104	19%
Spring 2004	150	27%	102	19%	62	10%	101	13%	17	3%	35	6%	7	1%	105	22%
Spring 2005	196	35%	95	15%	46	8%	123	15%	14	2%	30	5%	13	2%	108	18%
Spring 2006	186	33%	96	18%	24	5%	113	15%	14	3%	32	6%	16	2%	94	18%
Spring 2007	213	39%	108	19%	19	3%	76	9%	17	3%	21	4%	16	3%	105	19%
Spring 2008	266	38%	111	17%	57	9%	82	8%	18	3%	49	8%	12	2%	107	15%

Source: SMCCCD Data Warehouse

Success and Retention By Ethnicity

Art Department
2003/04 to 2007/08

		Headcount	Success Count	Success Rate	Retention Count	Retention Rate
2003/04	African American	28	11	39%	15	54%
	Asian	259	174	67%	207	80%
	Unreported	47	33	70%	36	77%
	Filipino	199	137	69%	160	80%
	Hispanic	203	144	71%	171	84%
	Native American	12	9	75%	10	83%
	Unknown	53	40	75%	43	81%
	White	482	389	81%	417	87%
	Totals & Averages	1,283	937	73%	1,059	83%
2004/05	African American	32	18	56%	24	75%
	Asian	296	216	73%	239	81%
	Unreported	36	24	67%	26	72%
	Filipino	193	138	72%	162	84%
	Hispanic	214	156	73%	183	86%
	Native American	10	7	70%	7	70%
	Unknown	49	32	65%	38	78%
	White	492	382	78%	425	86%
	Totals & Averages	1,322	973	74%	1,104	84%
2005/06	African American	27	19	70%	23	85%
	Asian	269	210	78%	237	88%
	Unreported	46	26	57%	32	70%
	Filipino	146	95	65%	113	77%
	Hispanic	166	121	73%	140	84%
	Native American	8	6	75%	8	100%
	Unknown	100	77	77%	86	86%
	White	447	341	76%	381	85%
	Totals & Averages	1,209	895	74%	1,020	84%
2006/07	African American	24	10	42%	16	67%
	Asian	242	181	75%	200	83%
	Unreported	28	18	64%	21	75%
	Filipino	139	87	63%	109	78%
	Hispanic	182	125	69%	152	84%
	Native American	7	3	43%	5	71%
	Unknown	110	81	74%	94	85%
	White	444	348	78%	382	86%
	Totals & Averages	1,176	853	73%	979	83%
2007/08	African American	50	32	64%	43	86%
	Asian	273	200	73%	229	84%
	Unreported	31	19	61%	27	87%
	Filipino	199	127	64%	149	75%
	Hispanic	227	153	67%	187	82%
	Native American	11	6	55%	7	64%
	Unknown	145	105	72%	122	84%
	White	453	366	81%	401	89%
	Totals & Averages	1,389	1,008	73%	1,165	84%

Source: SMCCCD Data Warehouse

Success and Retention By Gender

		Headcount	Success Count	Success Rate	Retention Count	Retention Rate
2003/04	Female	764	586	77%	658	86%
	Male	506	341	67%	390	77%
	Unreported	8	5	63%	6	75%
	Totals & Averages	1,278	932	73%	1,054	82%
2004/05	Female	802	620	77%	679	85%
	Male	504	344	68%	413	82%
	Unreported	4	2	50%	2	50%
	Totals & Averages	1,310	966	74%	1,094	84%
2005/06	Female	744	562	76%	635	85%
	Male	451	322	71%	373	83%
	Unreported	6	5	83%	6	100%
	Totals & Averages	1,201	889	74%	1,014	84%
2006/07	Female	714	522	73%	592	83%
	Male	443	317	72%	371	84%
	Unreported	13	11	85%	11	85%
	Totals & Averages	1,170	850	73%	974	83%
2007/08	Female	825	610	74%	696	84%
	Male	535	374	70%	443	83%
	Unreported	19	14	74%	16	84%
	Totals & Averages	1,379	998	72%	1,155	84%

Success and Retention by Day/Evening Status

		Headcount	Success Count	Success Rate	Retention Count	Retention Rate
2003/04	Day	744	536	72%	615	83%
	Evening	539	401	74%	444	82%
2004/05	Day	756	543	72%	628	83%
	Evening	566	430	76%	476	84%
2005/06	Day	662	475	72%	553	84%
	Evening	547	420	77%	467	85%
2006/07	Day	696	500	72%	572	82%
	Evening	480	353	74%	407	85%
2007/08	Day	847	574	68%	688	81%
	Evening	529	422	80%	465	88%

Source: SMCCCD Data Warehouse

Success and Retention by Age

Art Department
2003/04 to 2007/08

		Headcount	Success Count	Success Rate	Retention Count	Retention Rate
2003/04	Under 18	15	13	87%	14	93%
	Age 23-28	198	127	64%	147	74%
	Age 18-22	614	419	68%	497	81%
	Age 29-39	146	109	75%	118	81%
	Age 40-49	102	88	86%	93	91%
	Age 50-59	130	114	88%	117	90%
	Age 60+	78	67	86%	73	94%
	Totals & Averages	1,283	937	73%	1,059	83%
2004/05	Under 18	20	11	55%	15	75%
	Age 23-28	204	142	70%	164	80%
	Age 18-22	613	419	68%	501	82%
	Age 29-39	159	112	70%	121	76%
	Age 40-49	111	96	86%	99	89%
	Age 50-59	114	97	85%	107	94%
	Age 60+	101	96	95%	97	96%
	Totals & Averages	1,322	973	74%	1,104	84%
2005/06	Under 18	21	18	86%	19	90%
	Age 23-28	187	137	73%	156	83%
	Age 18-22	548	365	67%	438	80%
	Age 29-39	125	94	75%	107	86%
	Age 40-49	112	98	88%	106	95%
	Age 50-59	122	100	82%	107	88%
	Age 60+	94	83	88%	87	93%
	Totals & Averages	1,209	895	74%	1,020	84%
2006/07	Under 18	31	25	81%	27	87%
	Age 23-28	182	112	62%	143	79%
	Age 18-22	547	379	69%	438	80%
	Age 29-39	92	68	74%	77	84%
	Age 40-49	91	72	79%	83	91%
	Age 50-59	119	95	80%	102	86%
	Age 60+	114	102	89%	109	96%
	Totals & Averages	1,176	853	73%	979	83%
2007/08	Under 18	32	27	84%	29	91%
	Age 23-28	228	152	67%	184	81%
	Age 18-22	654	436	67%	533	81%
	Age 29-39	110	91	83%	97	88%
	Age 40-49	97	79	81%	85	88%
	Age 50-59	137	111	81%	120	88%
	Age 60+	131	112	85%	117	89%
	Totals & Averages	1,389	1,008	73%	1,165	84%

Source: SMCCCD Data Warehouse

Success and Retention by Enrollment Status

		Headcount	Success Count	Success Rate	Retention Count	Retention Rate
2003/04	Continuing Student	870	679	78%	743	85%
	Currently K-12	14	11	79%	12	86%
	First-Time Student	106	60	57%	82	77%
	First-Time Transfer Student	107	63	59%	75	70%
	Returning Student	137	89	65%	108	79%
	Returning Transfer Student	49	35	71%	39	80%
2004/05	Continuing Student	975	745	76%	832	85%
	Currently K-12	11	8	73%	9	82%
	First-Time Student	88	54	61%	70	80%
	First-Time Transfer Student	77	52	68%	58	75%
	Returning Student	119	77	65%	92	77%
	Returning Transfer Student	52	37	71%	43	83%
2005/06	Continuing Student	849	642	76%	726	86%
	Currently K-12	18	13	72%	16	89%
	First-Time Student	82	52	63%	65	79%
	First-Time Transfer Student	76	49	64%	61	80%
	Returning Student	115	82	71%	89	77%
	Returning Transfer Student	69	57	83%	63	91%
2006/07	Continuing Student	835	627	75%	704	84%
	Currently K-12	27	24	89%	24	89%
	First-Time Student	77	50	65%	63	82%
	First-Time Transfer Student	74	48	65%	56	76%
	Returning Student	101	73	72%	88	87%
	Returning Transfer Student	62	31	50%	44	71%
2007/08	Continuing Student	1,010	742	73%	841	83%
	Currently K-12	25	19	76%	22	88%
	First-Time Student	88	58	66%	71	81%
	First-Time Transfer Student	95	70	74%	85	89%
	Returning Student	104	70	67%	86	83%
	Returning Transfer Student	67	49	73%	60	90%

Source: SMCCCD Data Warehouse

Department Awards Conferred

Awards by Type

	2003/04	2004/05	2005/06	2006/07	2007/08	Total
Associate Degree	4	6	3	2	4	19
Total	4	6	3	2	4	19

Awards by Gender

	2003/04	2004/05	2005/06	2006/07	2007/08	Total
Female	2	2	3	2	2	11
Male	2	4			2	8

Awards by Ethnicity

	2003/04	2004/05	2005/06	2006/07	2007/08	Total
Asian		2	1	1		4
Filipino	2	2	1	1		6
Hispanic	1	1	1		1	4
Unreported					1	1
White	1	1			2	4

Awards by Age

	2003/04	2004/05	2005/06	2006/07	2007/08	Total
18-22	1	2	3		2	8
23-28	2	3		1		6
29-39	1			1	1	3
50-59		1			1	2

Awards by Major

	2003/04	2004/05	2005/06	2006/07	2007/08	Total
Art	4	6	3	2	4	19

Source: SMCCCD Data Warehouse