

## Department Productivity: By Year and By Term

	Census Headcount	End of Term Headcount	FTEF	FTES	WSCH	Load	Sections	Max Enroll
2003/04	349	288	1.50	34.90	1,047	698	10	323
2004/05	391	336	1.60	39.10	1,173	733	10	360
2005/06	468	414	2.00	46.85	1,405	703	12	445
2006/07	565	447	2.60	56.80	1,704	655	15	580
2007/08	607	498	2.80	60.32	1,809	646	16	625

	Census Headcount	End of Term Headcount	FTEF	FTES	WSCH	Load	Sections	Max Enroll
Fall 2003	165	137	0.70	16.50	495	707	5	158
Fall 2004	182	157	0.90	18.20	546	607	5	203
Fall 2005	213	181	0.90	21.30	639	710	5	203
Fall 2006	246	204	1.10	24.60	738	671	6	248
Fall 2007	257	214	1.10	25.70	771	701	6	248
Spring 2004	184	151	0.80	18.40	552	690	5	165
Spring 2005	209	179	0.70	20.90	627	896	5	158
Spring 2006	193	177	0.70	19.30	579	827	5	158
Spring 2007	261	192	1.10	26.10	783	712	7	248
Spring 2008	285	221	1.30	28.50	855	658	8	293
Summer 2005	62	56	0.40	6.25	187	469	2	85
Summer 2006	58	51	0.40	6.10	183	457	2	85
Summer 2007	65	63	0.40	6.12	183	459	2	85

Source: SMCCCD Data Warehouse

Census Headcount: Number of duplicated headcount at final census.

End of Term Headcount: Number of duplicated headcount at the end of the term.

FTEF: Total number of full time equivalent faculty assigned.

FTES: Total number of full time equivalent students enrolled at first census.

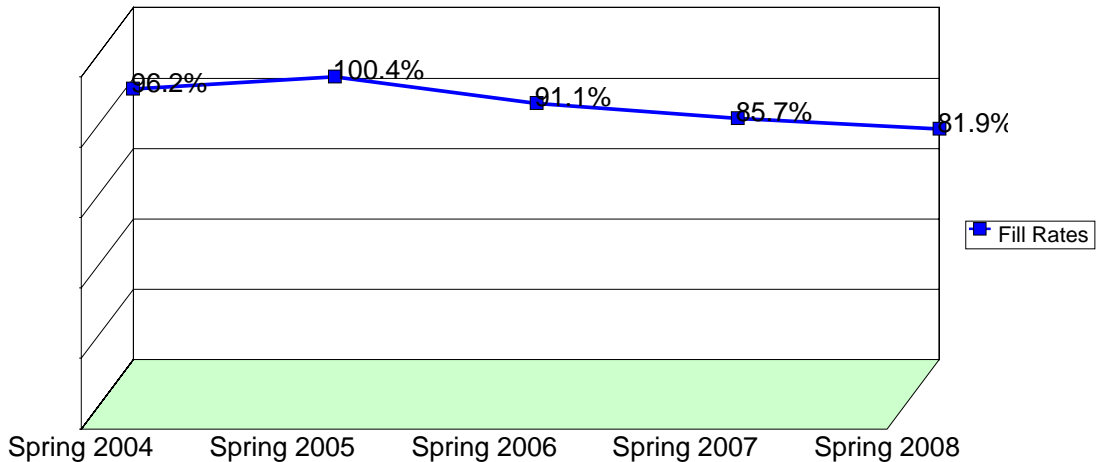
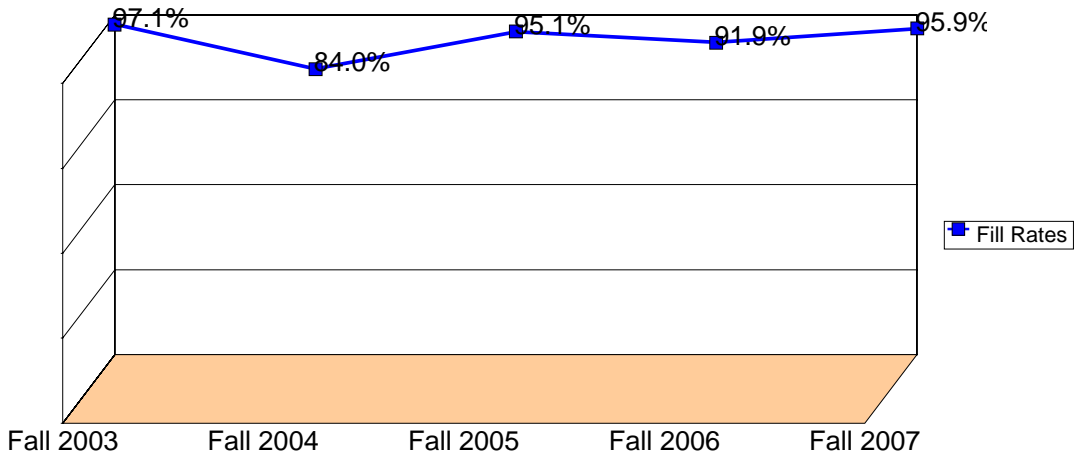
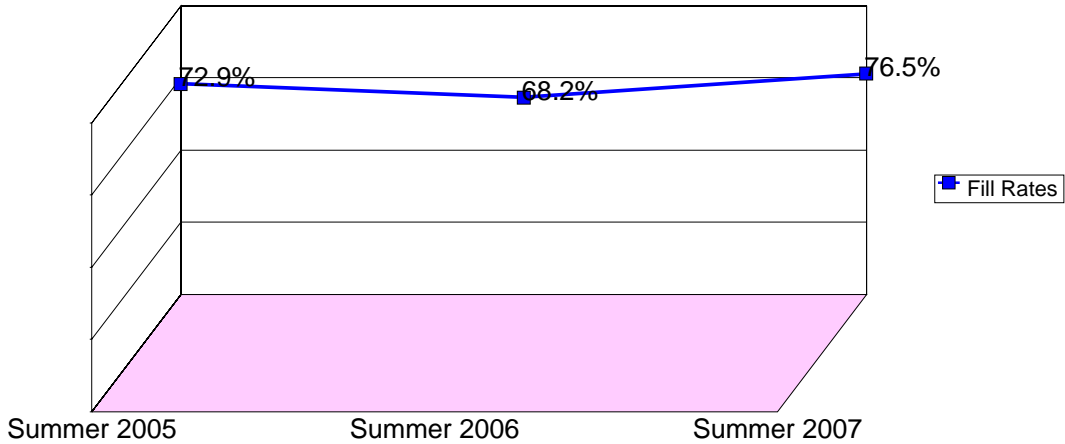
WSCH: Weekly student contact hours generated by census enrollments.

Load: The ratio of WSCH to FTEF, used to measure productivity.

Sections: Total number of sections offered per semester.

Max Enroll: The enrollment capacity or maximum enrollment as defined in curriculum.

## Department Fill Rates by Term



Source: SMCCCD Data Warehouse

\*Note: For a list of courses included in this report, see Department Productivity: Term by Course. Interdepartmental crosslisted courses are included in fill rate figures only. Crosslisted courses have been combined to calculate a single fill rate.

Fill Rates: The percent a class fills/enrolls based on capacity or enrollment maximum defined in the curriculum (does not include positive attendance, open entry/open exit, or independent study classes).

## Department Productivity: Term by Course

			Census Headcount	End of Term Headcount	FTEF	FTES	WSCH	Load	Sections	Max Enroll	
<b>Fall 2003</b>	ADMJ	100	Intro to Admin of Justice	46	42	0.20	4.60	138	690	1	45
		102	Prin/Procedures of Justice	34	25	0.20	3.40	102	510	1	45
		135	Narcotics Investigation	48	40	0.20	4.80	144	720	1	40
		690	Special Projects	1	1	0.00	0.10	3	#INF	1	5
WO	ADMJ	108	Police Community Relations	36	29	0.10	3.60	108	1,080	1	45
	SOCI	108	Community Relations	6	6	0.10	0.60	18	180	1	45
<b>Fall 2004</b>	ADMJ	100	Intro to Admin of Justice	37	33	0.20	3.70	111	555	1	45
		102	Prin/Procedures of Justice	31	24	0.20	3.10	93	465	1	45
		123	Concepts of Enforcement	40	34	0.20	4.00	120	600	1	45
		135	Narcotics Investigation	48	45	0.20	4.80	144	720	1	45
WO	ADMJ	108	Police Community Relations	26	21	0.10	2.60	78	780	1	45
	SOCI	108	Community Relations	7	4	0.10	0.70	21	210	1	45
<b>Fall 2005</b>	ADMJ	100	Intro to Admin of Justice	41	34	0.20	4.10	123	615	1	45
		110	Police Report Writing	41	33	0.20	4.10	123	615	1	45
		123	Concepts of Enforcement	50	45	0.20	5.00	150	750	1	45
		135	Narcotics Investigation	51	45	0.20	5.10	153	765	1	45
WO	ADMJ	108	Community Relations	30	24	0.10	3.00	90	900	1	45
	SOCI	108	Community Relations	1	1	0.10	0.10	3	30	1	45
<b>Fall 2006</b>	ADMJ	100	Intro to Admin of Justice	86	72	0.40	8.60	258	645	2	90
		110	Police Report Writing	36	24	0.20	3.60	108	540	1	45
		123	Concepts of Enforcement	36	31	0.20	3.60	108	540	1	45
		135	Narcotics Investigation	46	40	0.20	4.60	138	690	1	45
WO	ADMJ	108	Community Relations	42	37	0.10	4.20	126	1,260	1	45
	SOCI	108	Community Relations	2	2	0.10	0.20	6	60	1	45
<b>Fall 2007</b>	ADMJ	100	Intro to Admin of Justice	82	66	0.40	8.20	246	615	2	90
		110	Police Report Writing	45	37	0.20	4.50	135	675	1	45
		123	Concepts of Enforcement	34	30	0.20	3.40	102	510	1	45
		135	Narcotics Investigation	52	41	0.20	5.20	156	780	1	45
WO	ADMJ	108	Community Relations	44	40	0.10	4.40	132	1,320	1	45
	SOCI	108	Community Relations	2	1	0.10	0.20	6	60	1	45
<b>Spring 2004</b>	ADMJ	100	Intro to Admin of Justice	45	35	0.20	4.50	135	675	1	45
		125	Juvenile Procedures	44	38	0.20	4.40	132	660	1	45
		180	Criminal Identification	23	17	0.20	2.30	69	345	1	30
SZ	ADMJ	106	Legal Aspects of Evidence	39	32	0.10	3.90	117	1,170	1	45
	LEGL	306	Legal Aspects of Evidence	11	9	0.10	1.10	33	330	1	45
XL	ADMJ	104	Concepts of Criminal Law	33	29	0.10	3.30	99	990	1	45
	LEGL	304	Concepts of Criminal Law	7	4	0.10	0.70	21	210	1	45
<b>Spring 2005</b>	ADMJ	100	Intro to Admin of Justice	41	34	0.20	4.10	123	615	1	45
		125	Juvenile Procedures	41	33	0.20	4.10	123	615	1	45
	SZ	ADMJ	106	Legal Aspects of Evidence	34	30	0.10	3.40	102	1,020	1
LEGL		306	Legal Aspects of Evidence	5	5	0.10	0.50	15	150	1	45
WV	ADMJ	120	Criminal Investigation	45	40	0.10	4.50	135	1,350	1	45
	LEGL	320	Criminal Investigation	6	2	0.10	0.60	18	180	1	45
XL	ADMJ	104	Concepts of Criminal Law	48	42	0.10	4.80	144	1,440	1	45
	LEGL	304	Concepts of Criminal Law	6	3	0.10	0.60	18	180	1	45

			Census Headcount	End of Term Headcount	FTEF	FTES	WSCH	Load	Sections	Max Enroll
<b>Spring 2006</b>	ADMJ 100	Intro to Admin of Justice	41	39	0.20	4.10	123	615	1	45
		125 Juvenile Procedures	28	25	0.20	2.80	84	420	1	45
	SZ ADMJ 106	Legal Aspects of Evidence	45	38	0.10	4.50	135	1,350	1	45
		LEGL 306 Legal Aspects of Evidence	4	4	0.10	0.40	12	120	1	45
	WV ADMJ 120	Criminal Investigation	41	40	0.10	4.10	123	1,230	1	45
		LEGL 320 Criminal Investigation	3	2	0.10	0.30	9	90	1	45
	XL ADMJ 104	Concepts of Criminal Law	38	35	0.10	3.80	114	1,140	1	45
		LEGL 304 Concepts of Criminal Law	5	4	0.10	0.50	15	150	1	45
<b>Spring 2007</b>	ADMJ 100	(CP1)Intro to Admin of Justice	26	22	0.20	2.60	78	390	1	45
		Intro to Admin of Justice	45	21	0.20	4.50	135	675	1	45
		125 Juvenile Procedures	44	33	0.20	4.40	132	660	1	45
		180 Criminal Identification	18	12	0.20	1.80	54	270	1	45
	SZ ADMJ 106	Legal Aspects of Evidence	35	27	0.10	3.50	105	1,050	1	45
		LEGL 306 Legal Aspects of Evidence	2	2	0.10	0.20	6	60	1	45
	WV ADMJ 120	Criminal Investigation	44	37	0.10	4.40	132	1,320	1	45
		LEGL 320 Criminal Investigation	2	1	0.10	0.20	6	60	1	45
	XL ADMJ 104	Concepts of Criminal Law	49	40	0.10	4.90	147	1,470	1	45
		LEGL 304 Concepts of Criminal Law	5	4	0.10	0.50	15	150	1	45
<b>Spring 2008</b>	ADMJ 100	(CP1)Intro to Admin of Justice	37	27	0.20	3.70	111	555	1	45
		Intro to Admin of Justice	42	26	0.20	4.20	126	630	1	45
		102 CP4Princ/Procedures of Justice	41	31	0.20	4.10	123	615	1	45
		125 Juvenile Procedures	23	18	0.20	2.30	69	345	1	45
		180 Criminal Identification	11	8	0.20	1.10	33	165	1	45
		SZ ADMJ 106	Legal Aspects of Evidence	38	32	0.10	3.80	114	1,140	1
	LEGL 306 Legal Aspects of Evidence		3	2	0.10	0.30	9	90	1	45
	WV ADMJ 120	Criminal Investigation	43	36	0.10	4.30	129	1,290	1	45
		LEGL 320 Criminal Investigation	4	4	0.10	0.40	12	120	1	45
	XL ADMJ 104	Concepts of Criminal Law	50	43	0.10	5.00	150	1,500	1	45
LEGL 304 Concepts of Criminal Law		3	2	0.10	0.30	9	90	1	45	
<b>Summer 2005</b>	ADMJ 100	Intro to Admin of Justice	28	25	0.20	2.82	85	423	1	40
		102 CP4Princ/Procedures of Justice	34	31	0.20	3.43	103	514	1	45
<b>Summer 2006</b>	ADMJ 100	Intro to Admin of Justice	27	23	0.20	2.84	85	426	1	40
		102 Princ/Procedures of Justice	31	28	0.20	3.26	98	489	1	45
<b>Summer 2007</b>	ADMJ 100	Intro to Admin of Justice	21	21	0.20	1.98	59	296	1	40
		102 Princ/Procedures of Justice	44	42	0.20	4.14	124	621	1	45

Source: SMCCCD Data Warehouse

\*Note: Courses are sorted by crosslist group code. Interdepartmental crosslisted courses are included in fill rate figures only.

- Census Headcount: Number of duplicated headcount at final census.
- End of Term Headcount: Number of duplicated headcount at the end of the term.
- FTEF: Total number of full time equivalent faculty assigned.
- FTES: Total number of full time equivalent students enrolled at first census.
- WSCH: Weekly student contact hours generated by census enrollments.
- Load: The ratio of WSCH to FTEF, used to measure productivity.
- Sections: Total number of sections offered per semester.
- Max Enroll: The enrollment capacity or maximum enrollment as defined in curriculum.