

## Department Productivity: By Year and By Term

	<b>Census Headcount</b>	<b>End of Term Headcount</b>	<b>FTEF</b>	<b>FTES</b>	<b>WSCH</b>	<b>Load</b>	<b>Sections</b>	<b>Max Enroll</b>
2003/04	1,328	1,005	6.07	<b>173.51</b>	5,205	858	38	1,382
2004/05	1,337	1,007	6.62	<b>170.06</b>	5,102	771	42	1,498
2005/06	1,327	953	6.75	<b>164.87</b>	4,946	732	41	1,485
2006/07	1,307	1,001	6.99	<b>168.76</b>	5,063	725	42	1,528
2007/08	1,494	1,107	7.91	<b>189.07</b>	5,672	717	48	1,744

	<b>Census Headcount</b>	<b>End of Term Headcount</b>	<b>FTEF</b>	<b>FTES</b>	<b>WSCH</b>	<b>Load</b>	<b>Sections</b>	<b>Max Enroll</b>
Fall 2003	528	377	2.37	<b>66.41</b>	1,992	842	15	550
Fall 2004	541	407	2.69	<b>72.75</b>	2,183	813	17	615
Fall 2005	596	395	3.09	<b>70.64</b>	2,119	687	19	686
Fall 2006	560	433	3.09	<b>69.84</b>	2,095	679	19	696
Fall 2007	634	455	3.49	<b>78.32</b>	2,350	674	21	770
Spring 2004	505	382	2.40	<b>69.94</b>	2,098	874	15	537
Spring 2005	499	377	2.63	<b>62.01</b>	1,860	706	17	588
Spring 2006	500	376	2.47	<b>63.04</b>	1,891	767	16	559
Spring 2007	495	367	2.63	<b>65.70</b>	1,971	748	16	562
Spring 2008	575	444	3.09	<b>80.76</b>	2,423	785	19	672
Summer 2003	295	246	1.30	<b>37.17</b>	1,115	858	8	295
Summer 2004	297	223	1.30	<b>35.29</b>	1,059	814	8	295
Summer 2005	231	182	1.20	<b>31.19</b>	936	780	6	240
Summer 2006	252	201	1.27	<b>33.22</b>	997	787	7	270
Summer 2007	285	208	1.33	<b>29.99</b>	900	675	8	302

Source: SMCCCD Data Warehouse

Census Headcount: Number of duplicated headcount at final census.

End of Term Headcount: Number of duplicated headcount at the end of the term.

FTEF: Total number of full time equivalent faculty assigned.

FTES: Total number of full time equivalent students enrolled at first census.

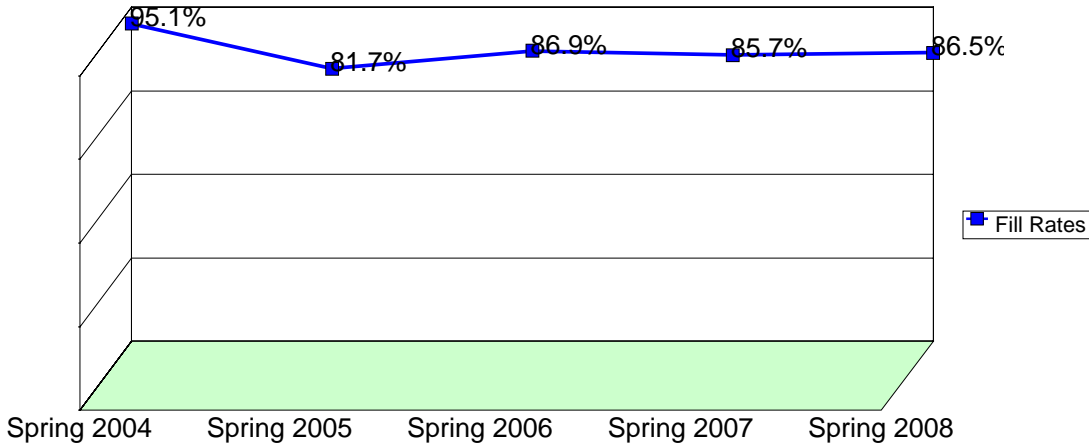
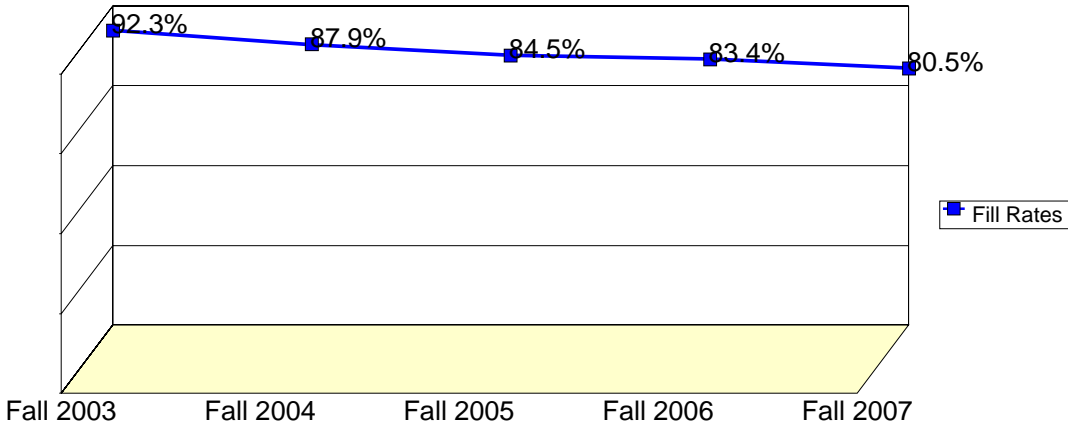
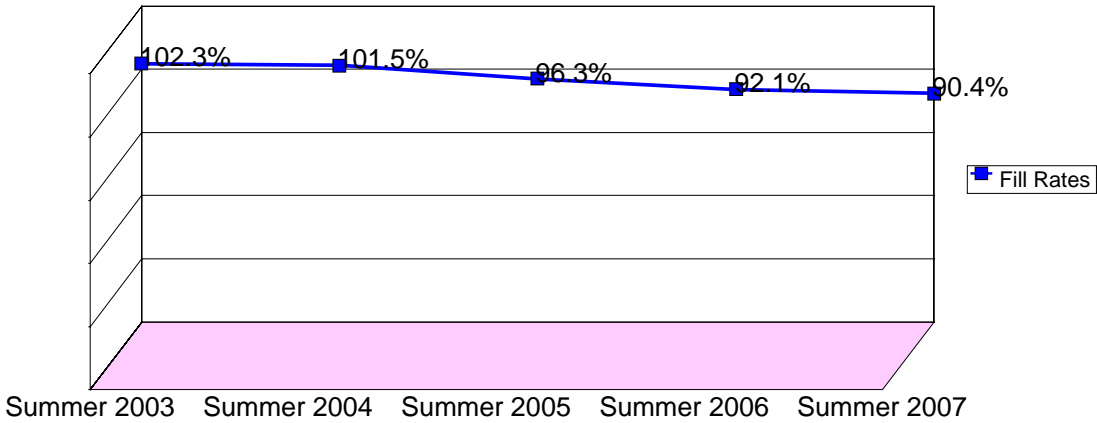
WSCH: Weekly student contact hours generated by census enrollments.

Load: The ratio of WSCH to FTEF, used to measure productivity.

Sections: Total number of sections offered per semester.

Max Enroll: The enrollment capacity or maximum enrollment as defined in curriculum.

### Department Fill Rates by Term



Source: SMCCCD Data Warehouse

\*Note: For a list of courses included in this report, see Department Productivity: Term by Course. Interdepartmental crosslisted courses are included in fill rate figures only. Crosslisted courses have been combined to calculate a single fill rate.

Fill Rates: The percent a class fills/enrolls based on capacity or enrollment maximum defined in the curriculum (does not include positive attendance, open entry/open exit, or independent study classes).

## Department Productivity: Term by Course

			Census Headcount	End of Term Headcount	FTEF	FTES	WSCH	Load	Sections	Max Enroll
<b>Fall 2003</b>	ACTG 100	Accounting Procedures	187	134	1.00	32.14	964	964	5	200
	103	Ten-Key Skills	25	16	0.03	1.14	34	1,030	1	25
	121	Financial Accounting	132	90	0.80	18.29	549	686	4	160
	131	Managerial Accounting	85	69	0.40	11.90	357	893	2	80
	194	Intro. Quickbooks/Quickbks Pro	58	34	0.07	1.43	43	645	1	40
	196	Inter Quickbooks/Quickbks.-Pro	39	33	0.07	1.30	39	585	1	40
	690	Special Projects	2	1	0.00	0.20	6	#INF	1	5
<b>Fall 2004</b>	ACTG 100	Accounting Procedures	129	111	0.60	28.89	867	1,444	3	120
	103	Ten-Key Skills	23	15	0.03	1.05	32	947	1	25
	121	Financial Accounting	165	99	1.00	22.85	685	685	5	200
	131	Managerial Accounting	85	69	0.60	12.03	361	602	3	120
	171	Federal Income Tax	37	34	0.25	4.58	137	544	1	40
	194	Intro. Quickbooks Pro	27	17	0.07	0.85	25	382	1	25
		Introduction to Quickbks Pro	40	39	0.07	1.33	40	600	1	40
	196	Inter Quickbooks/Quickbks.-Pro	35	23	0.07	1.17	35	525	1	40
690	Special Projects	0	0	0.00				1	5	
<b>Fall 2005</b>	ACTG 100	Accounting Procedures	176	121	1.00	24.64	739	739	5	200
	103	Ten-Key Skills	12	8	0.03	0.75	23	680	1	25
	121	Financial Accounting	172	117	1.00	23.86	716	716	5	201
	131	Managerial Accounting	70	49	0.40	10.03	301	753	2	80
	171	Federal Income Tax	34	24	0.25	4.35	131	515	1	40
	172	Business Income Taxes	16	10	0.20	2.44	73	366	1	30
	194	Intro. Quickbooks Pro	28	20	0.07	1.71	51	768	1	25
		Introduction to Quickbks Pro	51	25	0.07	1.57	47	705	1	40
	196	Inter Quickbooks/Quickbks.-Pro	36	20	0.07	1.20	36	540	1	40
690	Special Projects	1	1	0.00	0.10	3	#INF	1	5	
<b>Fall 2006</b>	ACTG 100	Accounting Procedures	181	135	1.00	27.01	810	810	5	200
	103	Ten-Key Skills	27	24	0.03	1.73	52	1,557	1	25
	121	Financial Accounting	164	105	1.00	22.69	681	681	5	201
	131	Managerial Accounting	76	67	0.60	10.83	325	542	3	120
	171	Federal Income Tax	30	25	0.25	4.00	120	474	1	40
	194	Intro. Quickbooks Pro	25	20	0.07	1.68	50	754	1	25
		Introduction to Quickbks Pro	27	27	0.07	0.90	27	405	1	40
	196	Inter Quickbooks/Quickbks.-Pro	30	30	0.07	1.00	30	450	1	40
	690	Special Projects	0	0	0.00				1	5
<b>Fall 2007</b>	ACTG 100	Accounting Procedures	196	138	1.00	27.23	817	817	5	200
	103	Ten-Key Skills	18	15	0.03	1.13	34	1,019	1	25
	121	Financial Accounting	180	119	1.20	26.64	799	666	6	235
	131	Managerial Accounting	79	59	0.60	11.25	338	562	3	120
	171	Federal Income Tax	34	26	0.25	4.53	136	537	1	40
	172	Business Income Taxes	15	10	0.20	2.65	80	398	1	30
	194	Quickbooks Pro 20007	33	28	0.07	1.07	32	480	1	40
		Quickbooks Pro 2007	35	26	0.07	2.35	70	1,055	1	35
	196	Inter Quickbooks Pro 2007	43	33	0.07	1.37	41	615	1	40

			Census Headcount	End of Term Headcount	FTEF	FTES	WSCH	Load	Sections	Max Enroll	
		690	Special Projects	1	1	0.00	0.10	3	#INF	1	5
<b>Spring 2004</b>	ACTG	100	Accounting Procedures	174	139	1.00	29.28	879	879	5	200
		121	Financial Accounting	134	88	0.80	23.05	692	864	4	160
		131	Managerial Accounting	80	67	0.40	10.67	320	800	2	80
		194	Intro. Quickbooks 2000	39	32	0.07	1.97	59	885	1	30
			Intro. Quickbooks/Quickbks Pro	44	36	0.07	3.02	91	1,357	1	30
		196	Inter Quickbooks/Quickbks.-Pro	33	20	0.07	1.89	57	848	1	30
		690	Special Projects	1	0	0.00	0.07	2	#INF	1	7
<b>Spring 2005</b>	ACTG	100	Accounting Procedures	182	151	1.00	27.29	819	819	5	192
		103	Ten-Key Skills	18	14	0.03	0.72	22	649	1	24
		121	Financial Accounting	120	85	0.80	20.15	604	756	4	160
		131	Managerial Accounting	81	66	0.60	11.02	331	551	3	115
		194	Intro. Quickbooks/Quickbks Pro	70	40	0.13	1.93	58	435	2	60
		196	Inter Quickbooks/Quickbks.-Pro	28	21	0.07	0.90	27	405	1	30
		690	Special Projects	0	0	0.00				1	7
<b>Spring 2006</b>	ACTG	100	Accounting Procedures	173	134	1.00	24.25	728	728	5	200
		103	Ten-Key Skills	18	16	0.03	0.91	27	815	1	24
		121	Financial Accounting	140	98	0.80	23.97	719	899	4	160
		131	Managerial Accounting	76	69	0.40	10.13	304	760	2	80
		194	Intro. Quickbooks/Quickbks Pro	46	29	0.07	1.50	45	675	1	30
		196	Inter Quickbooks/Quickbks.-Pro	25	18	0.07	0.83	25	375	1	30
		197	Computerized Acctg. Peachtree	18	9	0.10	1.18	35	354	1	28
690	Special Projects	4	3	0.00	0.27	8	#INF	1	7		
<b>Spring 2007</b>	ACTG	100	Accounting Procedures	184	129	1.00	26.44	793	793	5	200
		121	Financial Accounting	126	83	0.80	21.29	639	798	4	160
		131	Managerial Accounting	74	60	0.40	9.87	296	740	2	80
		172	Business Income Taxes	26	17	0.20	4.59	138	689	1	30
		194	Intro. Quickbooks/Quickbks Pro	35	35	0.07	1.17	35	525	1	30
		196	Inter Quickbooks/Quickbks.-Pro	29	29	0.07	0.97	29	435	1	30
		197	Computerized Acctg. Peachtree	19	12	0.10	1.25	37	373	1	25
690	Special Projects	2	2	0.00	0.13	4	#INF	1	7		
<b>Spring 2008</b>	ACTG	100	Accounting Procedures	196	135	1.00	32.42	973	973	5	200
		103	Ten-Key Skills	21	17	0.03	0.98	29	883	1	25
		121	Financial Accounting	151	113	1.00	24.49	735	735	5	200
		131	Managerial Accounting	97	88	0.40	12.93	388	970	2	80
		171	Individual Income Taxes	20	15	0.27	4.00	120	450	1	40
		172	Business Income Taxes	21	17	0.20	3.71	111	557	1	30
		194	Intro. Quickbooks/Quickbks Pro	53	43	0.13	1.70	51	382	2	60
196	Inter Quickbooks/Quickbks.-Pro	16	16	0.05	0.53	16	300	1	30		
690	Special Projects	0	0	0.00				1	7		
<b>Summer 2003</b>	ACTG	100	Accounting Procedures	81	67	0.40	14.52	436	1,089	2	80
		103	Ten-Key Skills	26	21	0.03	1.19	36	1,071	1	25
		121	Financial Accounting	78	63	0.40	10.42	313	782	2	80
		131	Managerial Accounting	86	71	0.40	10.23	307	768	2	80
		194	Intro. Quickbooks/Quickbks Pro	24	24	0.07	0.80	24	360	1	30
<b>Summer 2004</b>	ACTG	100	Accounting Procedures	85	74	0.40	13.56	407	1,017	2	80
		103	Ten-Key Skills	21	11	0.03	0.96	29	865	1	25

			<b>Census Headcount</b>	<b>End of Term Headcount</b>	<b>FTEF</b>	<b>FTES</b>	<b>WSCH</b>	<b>Load</b>	<b>Sections</b>	<b>Max Enroll</b>
	121	Financial Accounting	68	52	0.40	8.92	268	669	2	80
	131	Managerial Accounting	95	66	0.40	10.92	328	819	2	80
	194	Intro. Quickbooks/Quickbks Pro	28	20	0.07	0.93	28	420	1	30
<b>Summer 2005</b>	ACTG 100	Accounting Procedures	79	68	0.40	12.60	378	945	2	80
	121	Financial Accounting	74	52	0.40	9.71	291	728	2	80
	131	Managerial Accounting	78	62	0.40	8.88	266	666	2	80
<b>Summer 2006</b>	ACTG 100	Accounting Procedures	87	70	0.40	14.76	443	1,107	2	80
	121	Financial Accounting	65	48	0.40	8.52	256	639	2	80
	131	Managerial Accounting	69	59	0.40	8.90	267	668	2	80
	194	Intro. Quickbooks/Quickbks Pro	31	24	0.07	1.03	31	465	1	30
<b>Summer 2007</b>	ACTG 100	Accounting Procedures	88	69	0.40	11.61	348	871	2	80
	121	Financial Accounting	60	39	0.40	7.01	210	525	2	80
	131	Managerial Accounting	69	57	0.40	9.14	274	685	2	80
	194	Intro. Quickbooks/Quickbks Pro	47	31	0.07	1.57	47	705	1	30
	196	Inter Quickbooks/Quickbks.-Pro	21	12	0.07	0.67	20	300	1	32

Source: SMCCCD Data Warehouse

\*Note: Courses are sorted by crosslist group code. Interdepartmental crosslisted courses are included in fill rate figures only.

Census Headcount: Number of duplicated headcount at final census.

End of Term Headcount: Number of duplicated headcount at the end of the term.

FTEF: Total number of full time equivalent faculty assigned.

FTES: Total number of full time equivalent students enrolled at first census.

WSCH: Weekly student contact hours generated by census enrollments.

Load: The ratio of WSCH to FTEF, used to measure productivity.

Sections: Total number of sections offered per semester.

Max Enroll: The enrollment capacity or maximum enrollment as defined in curriculum.