

Department Enrollment

International Trade Department
2003/04 to 2007/08

FA03	FA04	FA05	FA06	FA07	SP04	SP05	SP06	SP07	SP08	SU06	SU07
132	85	67	88	82	94	93	95	12	98	13	26

Enrollment by Gender

	2003/04		2004/05		2005/06		2006/07		2007/08		Change 06/07-07/08		5 Year Row Total & Average	
Female	115	49%	86	45%	81	52%	65	58%	88	41%	35%	70%	435	48%
Male	110	50%	92	55%	81	48%	43	37%	115	57%	167%	267%	441	51%
Unreported	1	1%					5	4%	3	2%	-40%	-7%	9	1%
Column Total	226	100%	178	100%	162	100%	113	100%	206	100%	82%	140%	885	100%

Enrollment by Ethnicity

	2003/04		2004/05		2005/06		2006/07		2007/08		Change 06/07-07/08		5 Year Row Total & Average	
African American	11	5%	6	4%	5	3%	4	4%	10	6%	150%	244%	36	5%
Asian	76	35%	64	39%	52	32%	35	34%	58	32%	66%	128%	285	34%
Filipino	35	15%	26	15%	29	19%	12	8%	36	14%	200%	292%	138	15%
Hispanic	37	16%	33	19%	22	12%	25	22%	32	17%	28%	88%	149	17%
Native American	1	1%	1	0%			2	2%			-100%	-100%	4	0%
Other	7	2%	4	2%	2	1%	2	1%	3	2%	50%	373%	18	2%
White	49	22%	37	19%	37	22%	24	20%	47	19%	96%	127%	194	20%
Unreported	10	5%	7	3%	15	10%	9	8%	20	10%	122%	190%	61	7%
Column Total	226	100%	178	100%	162	100%	113	100%	206	100%	82%	140%	885	100%

Enrollment by Age

	2003/04		2004/05		2005/06		2006/07		2007/08		Change 06/07-06/08		5 Year Row Total & Average	
Under 18	1	1%	1	1%			2	2%	3	2%	50%	143%	7	1%
Age 18-22	106	49%	77	45%	56	37%	37	34%	63	33%	70%	131%	339	40%
Age 23-28	62	29%	51	30%	58	37%	33	31%	75	39%	127%	201%	279	34%
Age 29-39	32	13%	24	12%	29	18%	30	26%	35	17%	17%	61%	150	17%
Age 40-49	18	5%	18	9%	13	6%	6	4%	17	6%	183%	269%	72	6%
Age 50-59	6	3%	5	2%	2	0%	2	1%	11	3%	450%	568%	26	2%
Age 60+	1	0%	2	1%	4	2%	3	2%	2	0%	-33%	-97%	12	1%
Column Total	226	100%	178	100%	162	100%	113	100%	206	100%	82%	140%	885	100%

Enrollment by Status

	2003/04		2004/05		2005/06		2006/07		2007/08		Change 06/07-07/08		5 Year Row Total & Average	
Continuing	159	70%	128	72%	119	75%	65	58%	119	56%	83%	128%	590	66%
Currently K-12	2	1%	1	1%			1	1%	3	2%	200%	384%	7	1%
First-Time	13	6%	10	6%	3	2%	5	4%	8	6%	60%	261%	39	5%
First-Time Transfer	15	8%	12	7%	14	10%	16	16%	22	17%	38%	148%	79	12%
Returning	25	10%	17	10%	15	8%	15	13%	28	10%	87%	70%	100	10%
Returning Transfer	12	6%	10	5%	11	6%	11	6%	25	9%	127%	252%	69	7%
Column Total	226	100%	178	100%	162	100%	113	100%	205	100%	81%	139%	884	100%

Source: SMCCCD Data Warehouse

Enrollment by Units

	2003/04		2004/05		2005/06		2006/07		2007/08		Change 06/07-07/08		5 Year Row Total & Average	
Part-time	226	100%	178	100%	162	100%	113	100%	206	100%	82%	140%	885	100%
Column Total	226	100%	178	100%	162	100%	113	100%	206	100%	82%	140%	885	100%

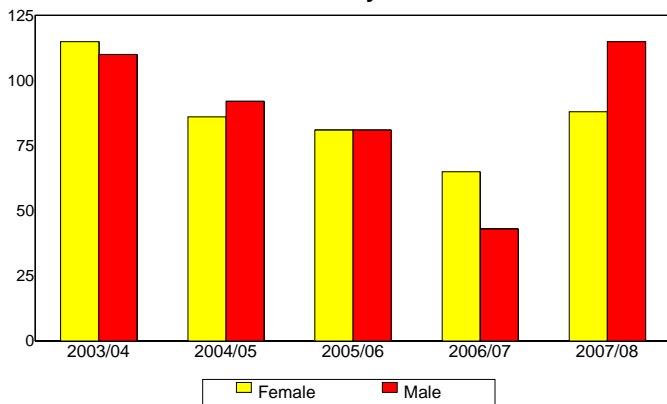
Enrollment by Course-Taking Pattern

	2003/04		2004/05		2005/06		2006/07		2007/08		Change 06/07-07/08		5 Year Row Total & Average	
Day	61	27%	27	16%	40	25%	13	11%	18	10%	38%	129%	159	18%
Evening	133	58%	121	66%	82	51%	81	74%	182	87%	125%	183%	599	68%
Day and Evening	32	15%	30	18%	40	24%	19	16%	6	3%	-68%	-49%	127	14%
Column Total	226	100%	178	100%	162	100%	113	100%	206	100%	82%	140%	885	100%

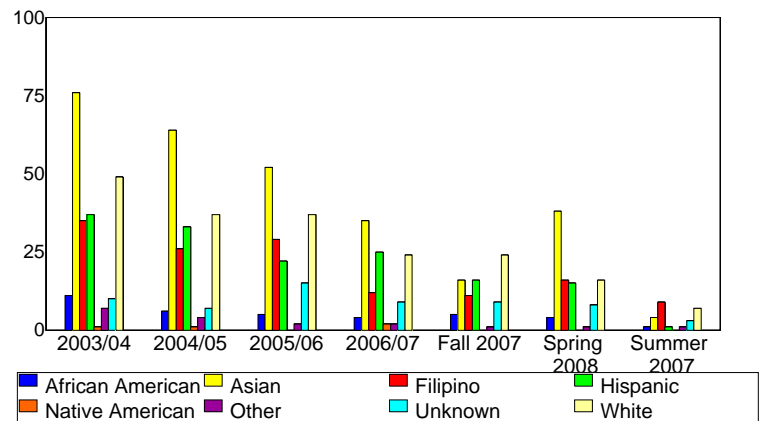
Enrollment by Educational Goal

	2003/04		2004/05		2005/06		2006/07		2007/08		Change 06/07-07/08		5 Year Row Total & Average	
Transfer	155	68%	112	64%	103	65%	66	58%	86	40%	30%	65%	522	58%
AA/AS w/o Transfer	14	6%	12	6%	15	9%	8	6%	12	7%	50%	158%	61	7%
Certificate w/o Transfer	9	4%	7	4%	8	4%	4	4%	8	5%	100%	216%	36	4%
Acquire/Update Job Skills	16	7%	17	10%	15	8%	15	15%	24	12%	60%	94%	87	10%
Educational Development	13	6%	7	3%	9	5%	8	5%	15	7%	88%	221%	52	6%
Improve Basic Skills			2	1%			1	1%	8	3%	700%	610%	11	1%
Undecided	19	9%	21	11%	12	8%	11	10%	12	6%	9%	48%	75	9%
Unreported									41	19%			41	5%
Column Total	226	100%	178	100%	162	100%	113	100%	206	100%	82%	140%	885	100%

Enrollment by Gender



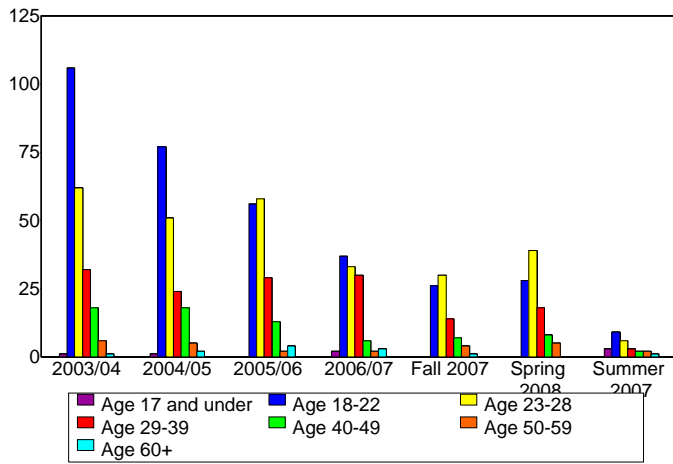
Enrollment by Ethnicity



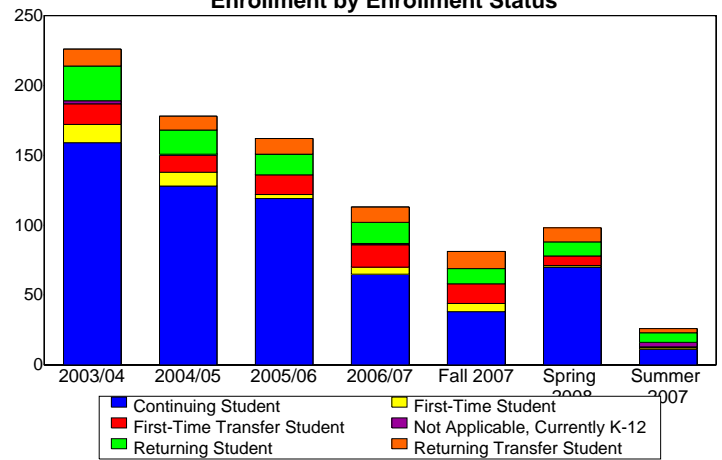
Source: SMCCCD Data Warehouse

*Note: Counts and percents are based on census figures for summer, fall and spring except where noted.

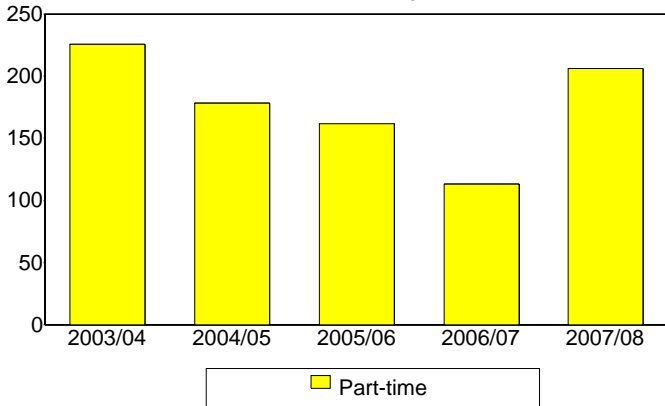
Enrollment by Student Age



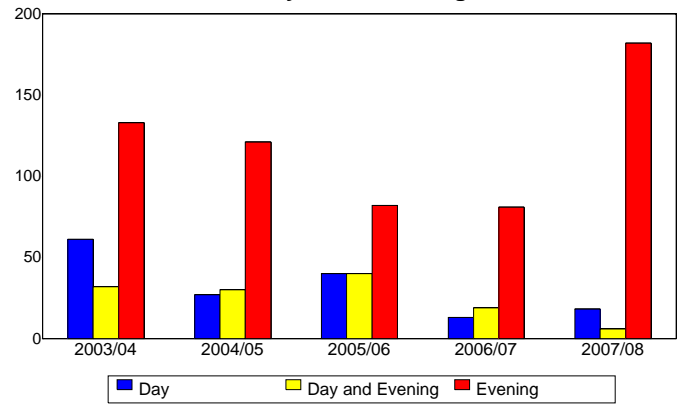
Enrollment by Enrollment Status



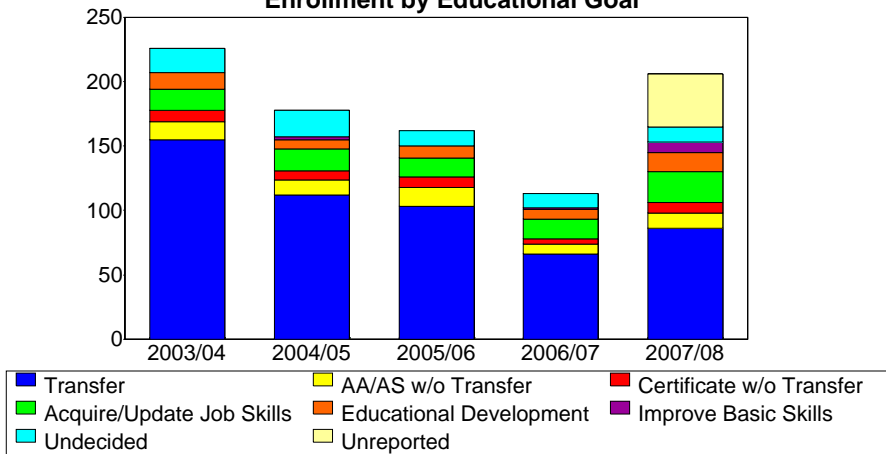
Enrollment by Units



Enrollment by Course-Taking Pattern



Enrollment by Educational Goal



Source: SMCCCD Data Warehouse