

Department Success and Retention

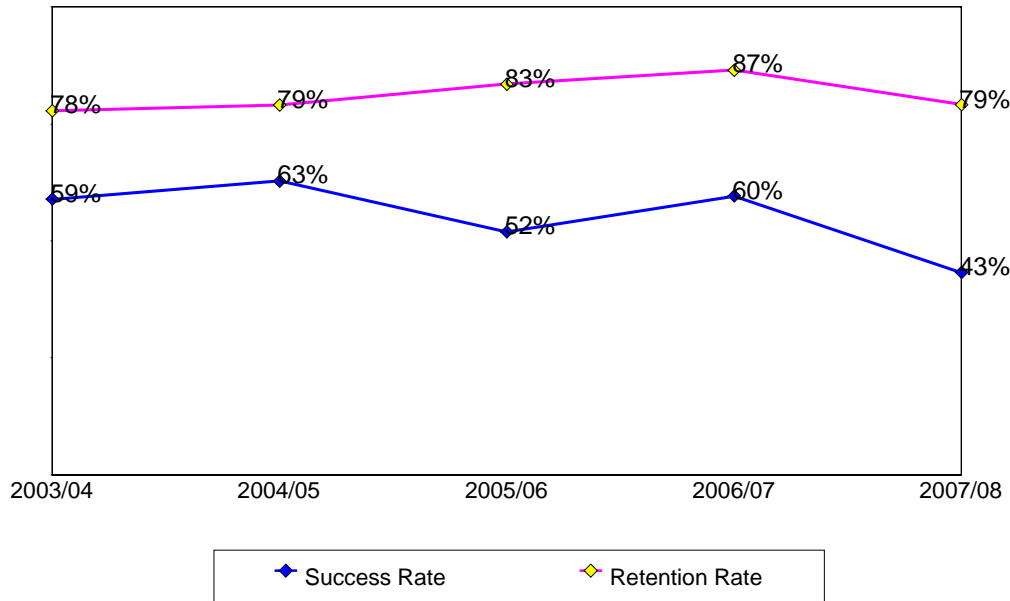
This report contains success and retention rates by various demographic segments and by course. Annual data are an aggregate of the fall and spring semesters. Annual and semester data contain required core courses only. The following parameters have been applied:

- Success Counts: Number of students with A,B,C,CR grades.
- Success Rate: The percentage of students who complete a course with a grade of A,B,C,CR out of total enrollments.
- Retention Counts: Number of students with A,B,C,D,F,CR,NC, I grades.
- Retention Rate: The percentage of students who complete a course with a grade of A,B,C,D,F,CR,NC, I out of total headcount.

Annual Success and Retention

	Headcount	Success Count	Success Rate	Retention Count	Retention Rate
2003/04	275	162	59%	214	78%
2004/05	215	135	63%	170	79%
2005/06	206	107	52%	172	83%
2006/07	104	62	60%	90	87%
2007/08	206	89	43%	163	79%
Change from 2006/07 to 2007/08	102	27	-16%	73	-7%
Totals & Averages	1,006	555	55%	809	80%

Annual (Fall/Spring) Success and Retention Rates



Source: SMCCCD Data Warehouse

Success and Retention By Term

	Headcount	Success Count	Success Rate	Retention Count	Retention Rate
Fall 2003	175	101	58%	134	77%
Fall 2004	104	71	68%	81	78%
Fall 2005	82	43	52%	71	87%
Fall 2006	93	54	58%	79	85%
Fall 2007	92	41	45%	75	82%
Spring 2004	100	61	61%	80	80%
Spring 2005	111	64	58%	89	80%
Spring 2006	124	64	52%	101	81%
Spring 2007	11	8	73%	11	100%
Spring 2008	114	48	42%	88	77%
Totals & Averages	1,006	555	55%	809	80%

Grade Distribution

	A		B		C		D		F		CR		NC		W	
Fall 2003	29	20%	34	23%	14	9%	3	2%	20	12%	7	3%	10	6%	38	24%
Fall 2004	26	35%	22	27%	5	5%	2	1%	1	1%	5	4%	7	6%	19	21%
Fall 2005	10	20%	11	20%	4	7%	4	5%			4	4%	19	30%	10	14%
Fall 2006	16	17%	15	21%	12	19%	14	17%	3	4%	1	1%	2	4%	12	17%
Fall 2007	16	27%	16	16%	2	2%	20	29%			3	2%			15	23%
Spring 2004	24	32%	21	21%	7	6%	7	7%			1	1%	12	12%	17	20%
Spring 2005	20	24%	21	26%	7	8%	9	9%			2	2%	15	12%	17	19%
Spring 2006	19	21%	19	17%	11	10%	10	9%			4	4%	20	23%	18	16%
Spring 2007	4	54%	3	24%	1	11%	1	11%								
Spring 2008	21	25%	11	11%	9	9%	17	22%	4	3%	2	2%	1	2%	23	27%

Source: SMCCCD Data Warehouse

Success and Retention by Ethnicity

		Headcount	Success Count	Success Rate	Retention Count	Retention Rate
2003/04	African American	16	4	25%	11	69%
	Asian	89	55	62%	68	76%
	Filipino	50	34	68%	43	86%
	Hispanic	45	24	53%	32	71%
	Other	12	3	25%	9	75%
	White	59	40	68%	47	80%
	Unreported	4	2	50%	4	100%
	Totals & Averages	275	162	59%	214	78%
2004/05	African American	9	3	33%	6	67%
	Asian	79	53	67%	64	81%
	Filipino	32	20	63%	25	78%
	Hispanic	42	27	64%	33	79%
	Other	6	4	67%	6	100%
	White	34	20	59%	27	79%
	Unreported	13	8	62%	9	69%
	Totals & Averages	215	135	63%	170	79%
2005/06	African American	6			4	67%
	Asian	65	32	49%	53	82%
	Filipino	29	12	41%	26	90%
	Hispanic	29	20	69%	28	97%
	Other	2			1	50%
	White	49	29	59%	39	80%
	Unreported	26	14	54%	21	81%
	Totals & Averages	206	107	52%	172	83%
2006/07	African American	2	1	50%	1	50%
	Asian	28	16	57%	26	93%
	Filipino	10	7	70%	10	100%
	Hispanic	24	15	63%	18	75%
	Native American	3	1	33%	3	100%
	Other	1				
	White	30	19	63%	26	87%
	Unreported	6	3	50%	6	100%
	Totals & Averages	104	62	60%	90	87%
2007/08	African American	9	2	22%	6	67%
	Asian	58	28	48%	45	78%
	Filipino	30	13	43%	26	87%
	Hispanic	32	19	59%	28	88%
	Other	2			2	100%
	White	50	21	42%	38	76%
	Unreported	25	6	24%	18	72%
		Totals & Averages	206	89	43%	163

Source: SMCCCD Data Warehouse

Success and Retention by Gender

		Headcount	Success Count	Success Rate	Retention Count	Retention Rate
2003/04	Female	136	80	59%	111	82%
	Male	139	82	59%	103	74%
	Totals & Averages	275	162	59%	214	78%
2004/05	Female	117	73	62%	88	75%
	Male	98	62	63%	82	84%
	Totals & Averages	215	135	63%	170	79%
2005/06	Female	88	41	47%	79	90%
	Male	118	66	56%	93	79%
	Totals & Averages	206	107	52%	172	83%
2006/07	Female	45	23	51%	38	84%
	Male	57	39	68%	50	88%
	Unreported	2			2	100%
	Totals & Averages	104	62	60%	90	87%
2007/08	Female	88	30	34%	68	77%
	Male	115	57	50%	92	80%
	Unreported	3	2	67%	3	100%
	Totals & Averages	206	89	43%	163	79%

Success and Retention by Day/Evening Status

		Headcount	Success Count	Success Rate	Retention Count	Retention Rate
2003/04	Day	88	56	64%	61	69%
	Evening	187	106	57%	153	82%
2004/05	Day	54	33	61%	46	85%
	Evening	161	102	63%	124	77%
2005/06	Day	75	39	52%	64	85%
	Evening	131	68	52%	108	82%
2006/07	Day	21	12	57%	20	95%
	Evening	83	50	60%	70	84%
2007/08	Day	21	6	29%	18	86%
	Evening	185	83	45%	145	78%

Source: SMCCCD Data Warehouse

Success and Retention by Age

		Headcount	Success Count	Success Rate	Retention Count	Retention Rate
2003/04	Under 18	1				
	Age 18-22	130	73	56%	97	75%
	Age 23-28	77	44	57%	59	77%
	Age 29-39	42	27	64%	37	88%
	Age 40-49	18	14	78%	16	89%
	Age 50-59	6	4	67%	5	83%
	Age 60+	1				
	Totals & Averages	275	162	59%	214	78%
2004/05	Under 18	1	1	100%	1	100%
	Age 18-22	82	46	56%	65	79%
	Age 23-28	65	40	62%	50	77%
	Age 29-39	33	21	64%	24	73%
	Age 40-49	28	22	79%	24	86%
	Age 50-59	4	3	75%	4	100%
	Age 60+	2	2	100%	2	100%
	Totals & Averages	215	135	63%	170	79%
2005/06	Age 18-22	66	24	36%	50	76%
	Age 23-28	74	39	53%	66	89%
	Age 29-39	40	23	57%	34	85%
	Age 40-49	18	17	94%	17	94%
	Age 50-59	4			1	25%
	Age 60+	4	4	100%	4	100%
	Totals & Averages	206	107	52%	172	83%
2006/07	Age 18-22	37	20	54%	32	86%
	Age 23-28	24	13	54%	20	83%
	Age 29-39	30	16	53%	25	83%
	Age 40-49	8	8	100%	8	100%
	Age 50-59	2	2	100%	2	100%
	Age 60+	3	3	100%	3	100%
	Totals & Averages	104	62	60%	90	87%
2007/08	Age 18-22	63	16	25%	46	73%
	Age 23-28	81	37	46%	66	81%
	Age 29-39	37	16	43%	29	78%
	Age 40-49	13	12	92%	13	100%
	Age 50-59	12	8	67%	9	75%
	Totals & Averages	206	89	43%	163	79%

Source: SMCCCD Data Warehouse

Success and Retention by Enrollment Status

		Headcount	Success Count	Success Rate	Retention Count	Retention Rate
2003/04	Continuing Student	200	122	61%	159	80%
	Currently K-12	1	1	100%	1	100%
	First-Time Student	14	5	36%	9	64%
	First-Time Transfer Student	20	12	60%	16	80%
	Returning Student	27	13	48%	18	67%
	Returning Transfer Student	13	9	69%	11	85%
2004/05	Continuing Student	154	97	63%	120	78%
	First-Time Student	14	8	57%	13	93%
	First-Time Transfer Student	17	12	71%	13	76%
	Returning Student	17	11	65%	15	88%
	Returning Transfer Student	13	7	54%	9	69%
2005/06	Continuing Student	148	78	53%	125	84%
	First-Time Student	4			3	75%
	First-Time Transfer Student	23	16	70%	22	96%
	Returning Student	17	3	18%	10	59%
	Returning Transfer Student	14	10	71%	12	86%
2006/07	Continuing Student	66	44	67%	59	89%
	First-Time Student	4			3	75%
	First-Time Transfer Student	16	9	56%	13	81%
	Returning Student	11	9	82%	11	100%
	Returning Transfer Student	7			4	57%
2007/08	Continuing Student	123	59	48%	93	76%
	First-Time Student	7	2	29%	7	100%
	First-Time Transfer Student	32	11	34%	25	78%
	Returning Student	22	7	32%	20	91%
	Returning Transfer Student	21	10	48%	17	81%

Source: SMCCCD Data Warehouse

International Trade Awards Conferred

Awards by Type

	2003/04	2004/05	2005/06	2006/07	2007/08	Total
Associate Degree	4	1			4	9
Certificate - Less than 30 units	3	2	6	8	3	22
Total	7	3	6	8	7	31

Awards by Gender

	2003/04	2004/05	2005/06	2006/07	2007/08	Total
Female	3	3	2	3	2	13
Male	4		4	5	5	18

Awards by Ethnicity

	2003/04	2004/05	2005/06	2006/07	2007/08	Total
Asian	1		2	3	3	9
Filipino	2	1				3
Hispanic		1		3	1	5
Unreported			1			1
White	4	1	3	2	3	13

Awards by Age

	2003/04	2004/05	2005/06	2006/07	2007/08	Total
18-22	1		2			3
23-28	2	1	2	4	3	12
29-39	4	2		2	1	9
40-49			2	2	3	7

Awards by Major

	2003/04	2004/05	2005/06	2006/07	2007/08	Total
Import & Export				2	1	3
International Business			1	4	2	7
International Trade	7	3	5	2	4	21

Source: SMCCCD Data Warehouse