

Department Productivity: By Year and By Term

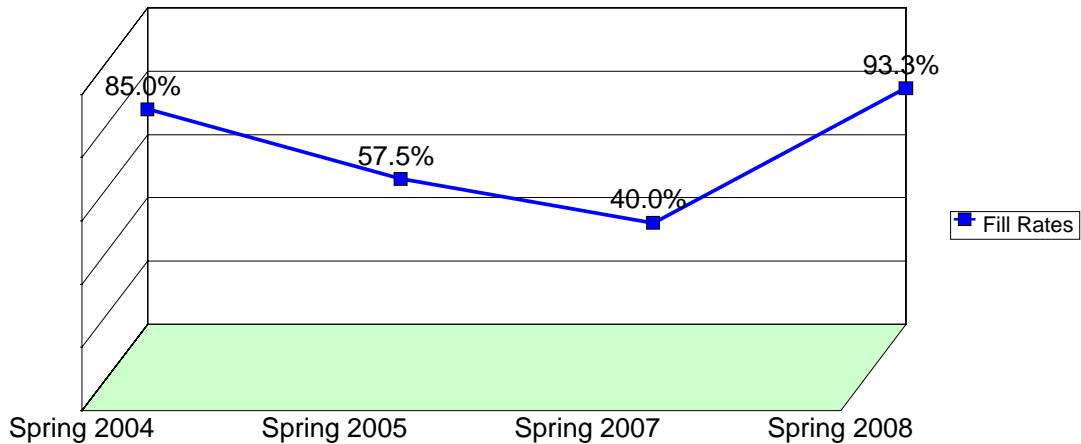
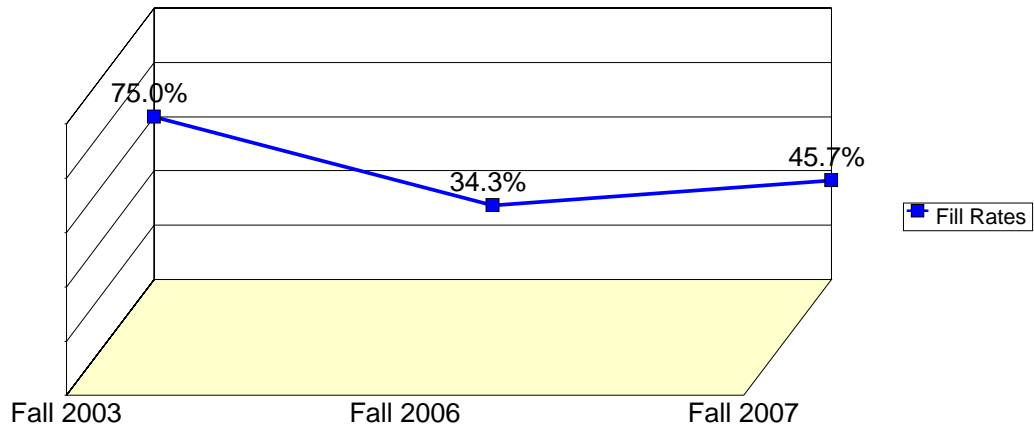
	Census Headcount	End of Term Headcount	FTEF	FTES	WSCH	Load	Sections	Max Enroll
2003/04	276	192	1.10	18.21	546	497	9	315
2004/05	223	146	0.90	13.30	399	443	7	255
2005/06	221	158	1.00	13.55	407	407	8	285
2006/07	101	91	0.70	6.37	191	273	6	210
2007/08	202	136	0.90	13.19	396	440	7	235

	Census Headcount	End of Term Headcount	FTEF	FTES	WSCH	Load	Sections	Max Enroll
Fall 2003	191	134	0.70	12.58	377	539	6	205
Fall 2004	128	81	0.50	7.45	224	447	4	145
Fall 2005	97	71	0.50	5.90	177	354	4	145
Fall 2006	76	67	0.50	5.10	153	306	4	145
Fall 2007	92	62	0.40	5.90	177	443	3	105
Spring 2004	85	58	0.40	5.63	169	422	3	110
Spring 2005	95	65	0.40	5.85	176	439	3	110
Spring 2006	124	87	0.50	7.65	230	459	4	140
Spring 2007	12	11	0.10	0.62	19	185	1	30
Spring 2008	110	74	0.50	7.29	219	437	4	130
Summer 2006	13	13	0.10	0.65	20	195	1	35

Source: SMCCCD Data Warehouse

Census Headcount: Number of duplicated headcount at final census.
 End of Term Headcount: Number of duplicated headcount at the end of the term.
 FTEF: Total number of full time equivalent faculty assigned.
 FTES: Total number of full time equivalent students enrolled at first census.
 WSCH: Weekly student contact hours generated by census enrollments.
 Load: The ratio of WSCH to FTEF, used to measure productivity.
 Sections: Total number of sections offered per semester.
 Max Enroll: The enrollment capacity or maximum enrollment as defined in curriculum.

Department Fill Rates by Term



Source: SMCCCD Data Warehouse

*Note: For a list of courses included in this report, see Department Productivity: Term by Course. Interdepartmental crosslisted courses are included in fill rate figures only. Crosslisted courses have been combined to calculate a single fill rate.

Fill Rates: The percent a class fills/enrolls based on capacity or enrollment maximum defined in the curriculum (does not include positive attendance, open entry/open exit, or independent study classes).

International Trade Department
2003/04 to 2007/08

Department Productivity: Term by Course

				Census Headcount	End of Term Headcount	FTEF	FTES	WSCH	Load	Sections	Max Enroll
Fall 2003	BUS.	200	Intro International Business	63	41	0.40	6.30	189	473	2	65
		226	Global Business Negotiation	42	36	0.10	2.10	63	630	1	40
		230	Intro to Intn'l Marketing	47	35	0.10	2.28	68	684	2	60
		243	Legal Environment of Int'l Bus	39	22	0.10	1.90	57	570	1	40
Fall 2004	BUS.	200	Intro International Business	24	18	0.20	2.40	72	360	1	30
		226	Global Business Negotiation	35	19	0.10	1.65	50	495	1	40
		230	Intro to Intn'l Marketing	34	19	0.10	1.70	51	510	1	35
		243	Legal Environment of Int'l Bus	35	25	0.10	1.70	51	510	1	40
Fall 2005	BUS.	200	Intro International Business	26	18	0.20	2.60	78	390	1	30
		226	Global Business Negotiation	20	14	0.10	0.90	27	270	1	40
		230	Intro to Intn'l Marketing	25	18	0.10	1.10	33	330	1	35
		243	Legal Environment of Int'l Bus	26	21	0.10	1.30	39	390	1	40
Fall 2006	BUS.	200	Intro International Business	26	17	0.20	2.60	78	390	1	30
		226	Global Business Negotiation	14	14	0.10	0.70	21	210	1	40
		230	Intro to Intn'l Marketing	16	16	0.10	0.80	24	240	1	35
		243	Legal Environment of Int'l Bus	20	20	0.10	1.00	30	300	1	40
Fall 2007	BUS.	200	Intro International Business	28	18	0.20	2.80	84	420	1	30
		226	Global Business Negotiation	36	26	0.10	1.70	51	510	1	40
		230	Intro to Intn'l Marketing	28	18	0.10	1.40	42	420	1	35
Spring 2004	BUS.	200	Intro International Business	29	18	0.20	2.90	87	435	1	40
		210	International Finance	26	18	0.10	1.19	36	357	1	30
		279	Import/Export Management	30	22	0.10	1.54	46	463	1	40
Spring 2005	BUS.	200	Intro International Business	23	21	0.20	2.30	69	345	1	40
		210	International Finance	32	18	0.10	1.60	48	480	1	30
		279	Import/Export Management	40	26	0.10	1.95	59	585	1	40
Spring 2006	BUS.	200	Intro International Business	29	22	0.20	2.90	87	435	1	40
		210	International Finance	24	15	0.10	1.20	36	360	1	30
		241	Doing Business in Asia	30	21	0.10	1.50	45	450	1	30
		279	Import/Export Management	41	29	0.10	2.05	62	615	1	40
Spring 2007	BUS.	279	Import/Export Management	12	11	0.10	0.62	19	185	1	30
Spring 2008	BUS.	200	Intro International Business	36	23	0.20	3.60	108	540	1	40
		210	International Finance	21	14	0.10	1.05	32	315	1	30
		241	Doing Business in Asia	25	18	0.10	1.20	36	360	1	30
		279	Import/Export Management	28	19	0.10	1.44	43	432	1	30
Summer 2006	BUS.	241	Doing Business in Asia	13	13	0.10	0.65	20	195	1	35

Source: SMCCCD Data Warehouse

*Note: For a list of courses included in this report, see Department Productivity: Term by Course. Interdepartmental crosslisted courses are included in fill rate figures only. Crosslisted courses have been combined to calculate a single fill rate.

Fill Rates: The percent a class fills/enrolls based on capacity or enrollment maximum defined in the curriculum (does