

## Skyline College Productivity & Efficiency Report First Census

	Census Enrollment	End of Term Enrollment	FTEF	FTES	FTES Percent Change	Contact Hours	Load	Load Percent Change	Sections	Fill Rates
<b>2005/06</b>	54,458	45,010	377.9	6,919	-	207,574	549	-	2,165	78.4%
<b>2006/07</b>	50,120	41,087	380.7	6,808	-1.6%	204,250	537	-2.2%	2,194	77.6%
<b>2007/08</b>	54,463	43,635	393.5	7,333	7.7%	219,994	559	4.1%	2,291	82.4%
<b>2008/09 YTD</b>	32,516	30,901	230.5	4,479	***	134,371	583	***	1,343	82.9%

2008/09 Goals: FTES= 7,834 (based on 7.0% over 2007/08 reported FTES=7329), Load=570  
 2007/08 Goals: FTES=6938 (based on 2.0% over 2006/07 reported FTES=6801), Load=530  
 2006/07 Reported FTES: SU=844.45, FA=3023.77, SP=2816.69, Flex/NR/Apprentice=117

	Census Enrollment	End of Term Enrollment	FTEF	FTES	FTES Percent Change	Contact Hours	Load	Load Percent Change	Sections	Fill Rates
<b>Fall 2005</b>	24,068	19,821	162.5	3,019	-	90,565	557	-	896	81.0%
<b>Fall 2006</b>	21,395	17,511	166.0	3,062	1.4%	91,879	553	-0.7%	925	79.7%
<b>Fall 2007</b>	22,667	18,000	170.2	3,195	4.3%	95,859	563	1.8%	965	83.0%
<b>Fall 2008</b>	23,498	23,315	172.9	3,380	5.8%	101,394	587	4.3%	994	84.3%
<b>Spring 2006</b>	22,355	18,503	170.8	3,043	-	91,283	534	-	983	74.3%
<b>Spring 2007</b>	21,215	17,152	162.2	2,889	-5.1%	86,671	534	0.0%	948	77.3%
<b>Spring 2008</b>	23,625	18,808	174.2	3,250	12.5%	97,501	560	4.9%	1,013	82.1%
<b>Summer 2005</b>	8,035	6,686	44.6	858	-	25,726	577	-	286	83.9%
<b>Summer 2006</b>	7,508	6,424	52.5	857	-0.1%	25,705	490	-15.1%	321	73.2%
<b>Summer 2007</b>	8,171	6,827	49.1	888	3.6%	26,641	543	10.8%	313	81.8%
<b>Summer 2008</b>	9,018	7,586	57.7	1,099	23.8%	32,429	564	3.9%	349	83.4%

Source: SMCCCD Data Warehouse, 9/8/08, 3:46 PM

\*\*\* Full period data not yet available.

Census headcount: Number of duplicated headcount at census.

End of Term Headcount: Number of duplicated headcount at the end of term. For the current term, this figure rolls until the term ends.

FTEF: Total number full time equivalent faculty assigned.

FTES: Total number of full time student enrolled at first census.

Contact Hours: All methods of accounting including WSCH, DSCH, PA, PO, PQ, IS and IX.

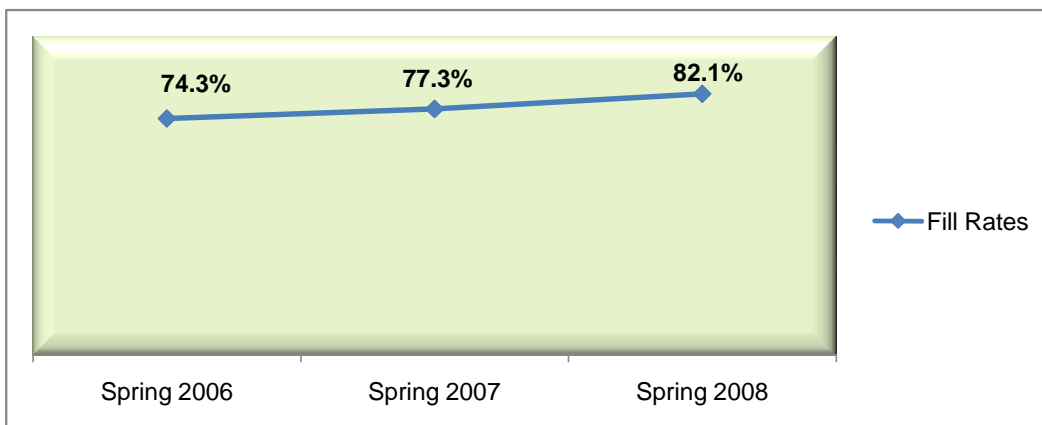
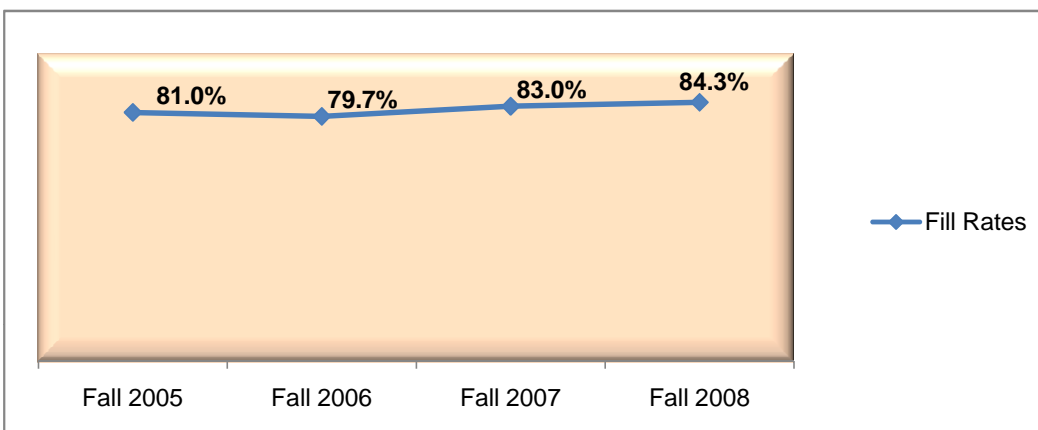
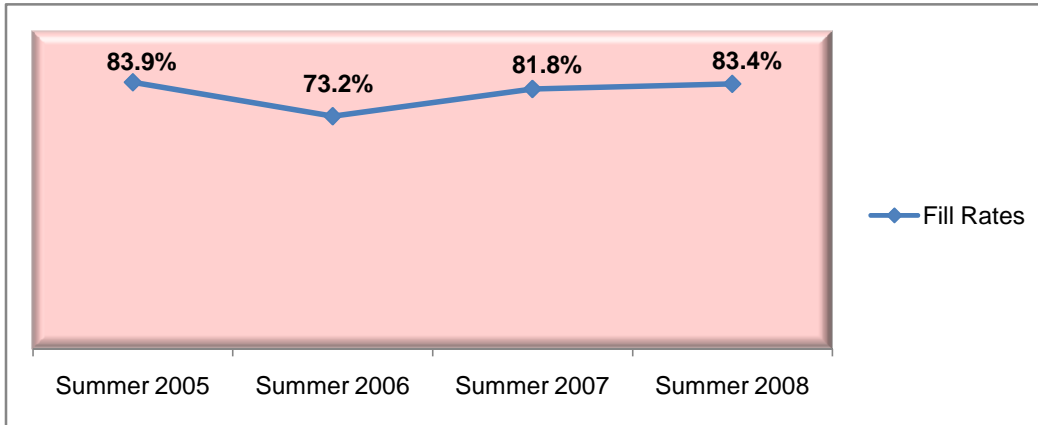
Load: The ratio of WSCH to FTEF, used to measure productivity.

Sections: Total number of sections offered per semester.

Max Enroll: The enrollment capacity or maximum enrollment as defined in curriculum.

Fill Rates: The percent a class fills/enrolls based on capacity or enrollment maximum defined in the curriculum (does not include positive attendance, open entry/open exit, or in study classes).

## Collegewide Fill Rates By Term



Source: SMCCCD Data Warehouse, 9/8/08, 3:46 PM

\*Note: Crosslisted courses have been combined to calculate a single fill rate.

Fill Rates: The percent a class fills/enrolls based on capacity or enrollment maximum defined in the curriculum (does not include positive attendance, open entry/open exit, or independent study classes).