

## Skyline College Overview

Located on the San Francisco Peninsula in San Bruno, Skyline College is a public degree and certificate granting institution. The College primarily serves northern San Mateo County and residents drawn from the southern portion of San Francisco whose boundary is five miles north of the College. The campus consists of 111-acres bounded by residential developments and the Golden Gate National Recreation Area. Brisbane, Colma, Daly City, Millbrae, Pacifica, and South San Francisco are the closest communities to Skyline College. The City of San Bruno is adjacent to San Francisco International Airport.

Skyline College is one of three colleges in the San Mateo County Community College District (SMCCCD). The district is governed by a five-member District Board of Trustees that operates independently from County government and whose membership is elected at large by County voters every four years. The district enrolls more than 45,000 students each year and Skyline College's share of this enrollment is nearly one-third while the College of San Mateo and Cañada College, constitute 44 and 24 percent of the district's total enrollment, respectively. Skyline College has seen a 6% decrease in total duplicated headcount and 14% in unduplicated headcount between 2001/02 and 2005/06. However, there has been a slight increase in FTES and WSCH (less than .5% each) between 2001/02 and 2005/06, indicating that there are fewer students but they are taking more classes.

Academic Year	Duplicated Headcount	Unduplicated Headcount	FTES	WSCH	Load	Sections
2001/02	57,812	16,703	6,900.27	207,008	536	2,311
2002/03	64,642	18,001	7,658.39	229,752	573	2,429
2002/03	54,904	15,192	7,121.33	213,640	624	1,962
2004/05	53,907	14,424	6,966.90	209,007	589	2,014
2005/06	54,509	14,322	6,908.27	207,248	549	2,165

Source: SMCCCD Data Warehouse

**Table 1. Skyline College Five-Year Enrollment and Productivity Trends**

Reflecting the Bay Area's increasing racial and ethnic diversity, Skyline College enrolled a student body that was 20% White, 28% Asian, 19% Hispanic, 19% Filipino, and 3% African American in Fall 2006. Projections developed for the Education Master Plan in Spring 2006 showed that the College will experience even more diversity in its service area in coming years. Overall headcount enrollment at Skyline College has decreased over the past two years while the number of student contact hours has increased.

San Mateo County is situated between San Francisco County to the north, Santa Cruz to the south, and Santa Clara to the east. The northern portion of Santa Clara county and east side of the San Francisco Peninsula are often referred to as the Silicon Valley, home to many of the world's high technology companies including Adobe Systems, Apple Computer, Cisco Systems, DreamWorks Animation, Google, eBay, Sun Microsystems, and Yahoo! The boundaries of Silicon Valley are not easily fixed; it is more a regional state of mind than a geographical location. The result is that intellectual capital in

736 the Peninsula is considerable, lending itself to new products and innovations including the Bay Area's  
 737 emerging biotechnology industry.

738  
 739 Taken as a whole, San Mateo County is remarkably affluent and well-educated. Median family  
 740 incomes (\$88,763) outstrip both California (\$58,327) and the nation as whole (\$53,692). Forty-three  
 741 percent of adults already possess a bachelor's degree. The escalating housing market in the county  
 742 produced a median house price of \$678,433 in 2004. These statistics, however, belie a more complete  
 743 picture of the challenges facing both the county and the College. There are pockets within San Mateo  
 744 County where median family incomes are less than \$20,000 annually and where fewer than 5% of  
 745 adults have earned bachelor's degree. Nearly 6% of the county's population lives under the poverty  
 746 line, with no discretionary income, including 5% of those 65 and older. The continuing divide  
 747 between "haves" and "have-nots" spells opportunity for Skyline College. According to the enrollment  
 748 analysis completed in the Education Master Plan 2006 report, the largest market shares for Skyline  
 749 College will continue to draw from the San Mateo County area and in the age categories 15-19, 20-24  
 750 and 25-29.

751

Age Group	San Mateo Males	San Mateo Females	San Francisco Males	San Francisco Females	Other County Males	Other County Females
15-19	7.2%	8.0%	3.9%	3.5%	0.2%	0.3%
20-24	11.4%	14.9%	6.0%	5.1%	0.5%	0.8%
25-29	3.6%	5.9%	1.5%	1.8%	0.3%	0.4%
30-34	1.6%	3.2%	0.6%	0.6%	0.2%	0.2%
35-39	1.1%	2.2%	3.0%	0.3%	0.2%	0.2%
40-44	0.7%	2.0%	0.2%	0.3%	0.2%	0.1%
45-49	0.7%	1.7%	0.2%	0.2%	0.1%	0.1%
50-54	0.6%	1.4%	0.2%	0.2%	0.1%	0.1%
55-59	0.6%	1.1%	0.2%	0.1%	0.1%	0.1%
60-64	4.0%	0.6%	0.1%	0.1%	0.1%	0.1%
65+	0.8%	0.9%	0.1%	0.2%	0.0%	0.0%

752 Source: Skyline College Education Master Plan 2006

753 **Table 2. Estimated Enrollment Shares for Skyline College by Age, Gender and County, 2005**

754

755 Skyline College offers more than 80 associate degree and certificate programs. Nearly 900 course  
 756 sections were offered in Fall 2005 almost all of which were convened at the main campus at 3300  
 757 College Drive in San Bruno. In fall 2006, 14 course sections were planned at seven off-campus  
 758 locations including the South San Francisco Center on Chestnut Avenue and two feeder high schools.  
 759 The College has been accredited by the Western Association of Schools and Colleges (WASC-  
 760 ACCJC) Accrediting Commission for Community and Junior Colleges since 1971. Skyline College  
 761 also holds specialized accreditation for its programs in cosmetology, emergency medical technician,  
 762 respiratory therapy, and surgical technology. The College does not operate not-for-credit programs.

763

764 Skyline College is engaged in essential thinking about its future and its contributions to its service  
 765 area, the State of California, the nation, and an increasingly global world. Impetus for planning is  
 766 found in two recent bond elections passed by the voters of San Mateo County. In November 2001, the  
 767 voters of San Mateo County passed Measure C, authorizing SMCCCD to issue \$207 million in general  
 768 obligation bonds to fund facilities capital improvements. An additional \$100 million in other funding  
 769 was secured from various sources, including redevelopment funds, State Chancellor's Office program  
 770 funds, grants, donations, fees, and other miscellaneous funding sources, resulting in a construction

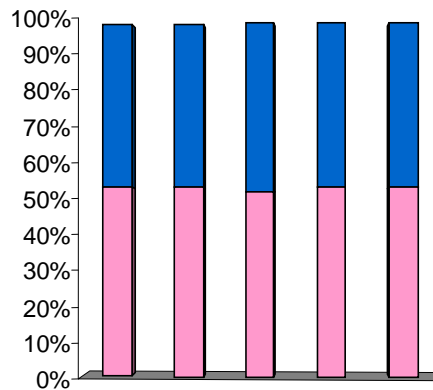
771 program valued at \$307 million. Subsequently, in November 2005, Measure A was passed,  
 772 authorizing the District to issue an additional \$468 million in general obligation bonds to continue to  
 773 execute facilities capital improvements. These resources provide Skyline College with an opportunity  
 774 to engage its future in new ways.

775  
 776 In December 2005 the College issued a request for proposals for the development of an Education  
 777 Master Plan. This plan was to assess Skyline College’s environment and to make recommendations  
 778 on instructional programs and support services that will meet the changing demands of the  
 779 community. The College desired to have this information on hand as a forerunner to the development  
 780 of a Facilities Master Plan to guide its share of capital construction under Measure A. The Education  
 781 Plan was developed in Spring 2006 and is being used to inform facilities and other college-wide  
 782 planning decisions and goals.

783

784 **Demographics**

785 Skyline College witnessed a drop in FTES between 2002/03-2005/06 by about 9.8%. However,  
 786 between 2001-2006, the drop was less than .5%. The College is witnessing a trend of fewer students  
 787 taking more classes which accounts for a moderate decrease in duplicated headcount (9%). The  
 788 College continues to see a higher percentage of female students than male students (53% female on  
 789 average). There has been a slight shift in the ratio of full-time students (12 units or more) to part-time  
 790 students (less than 12 units). The trend over the past several years indicates that there are slightly more  
 791 full-time students on campus (28% in 2004/05 and 2005/06) than in the past and the split between day-  
 792 time only and evening only students continues to be fairly even (41% and 38% respectively) with a  
 793 slight increase in students who take both day and evening classes (21% on average).

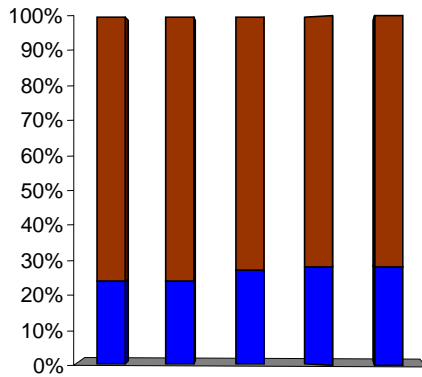


	2001/02	2002/03	2003/04	2004/05	2005/06
■ Male	46%	46%	47%	46%	46%
■ Female	53%	53%	52%	53%	53%

Source: SMCCCD Data Warehouse

**Figure 1. Enrollment by Gender**

794



	2001/02	2002/03	2003/04	2004/05	2005/06
■ Part-time	76%	76%	73%	72%	72%
■ Full-time	24%	24%	27%	28%	28%

Source: SMCCCD Data Warehouse

**Figure 2. Enrollment by Unit Load**

795

796

797

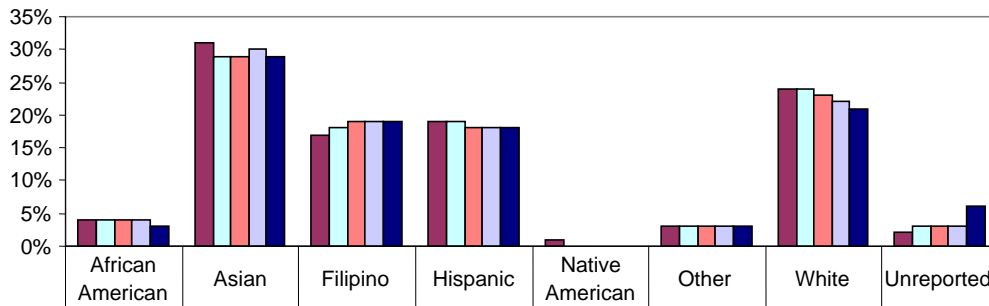
798

799

800

801

The student population is increasingly ethnically diverse with White students steadily decreasing proportionately at about 1% per year. The largest ethnic segment in the population continues to be Asian, at about 30% per year on average while the Hispanic and Filipino populations have held steady at about 18% per year on average. Nearly half of the students are between the ages of 18-22 and nearly a quarter of the students are between the ages of 23-28.



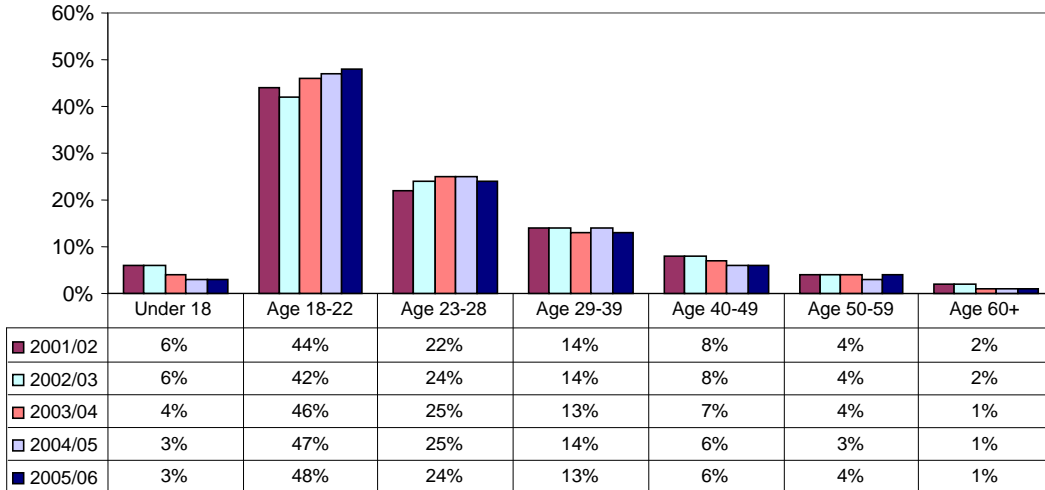
	African American	Asian	Filipino	Hispanic	Native American	Other	White	Unreported
■ 2001/02	4%	31%	17%	19%	1%	3%	24%	2%
□ 2002/03	4%	29%	18%	19%	0%	3%	24%	3%
■ 2003/04	4%	29%	19%	18%	0%	3%	23%	3%
□ 2004/05	4%	30%	19%	18%	0%	3%	22%	3%
■ 2005/06	3%	29%	19%	18%	0%	3%	21%	6%

Source: SMCCCD Data Warehouse

**Figure 3. Enrollment by Ethnicity**

802

803

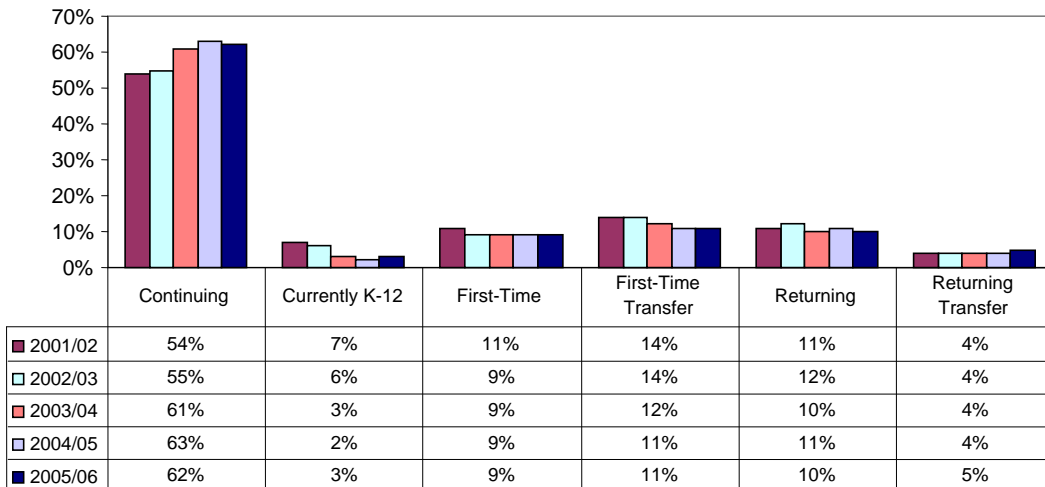


Source: SMCCCD Data Warehouse

**Figure 4. Enrollment by Age Group**

804  
805  
806  
807  
808  
809  
810  
811  
812  
813  
814

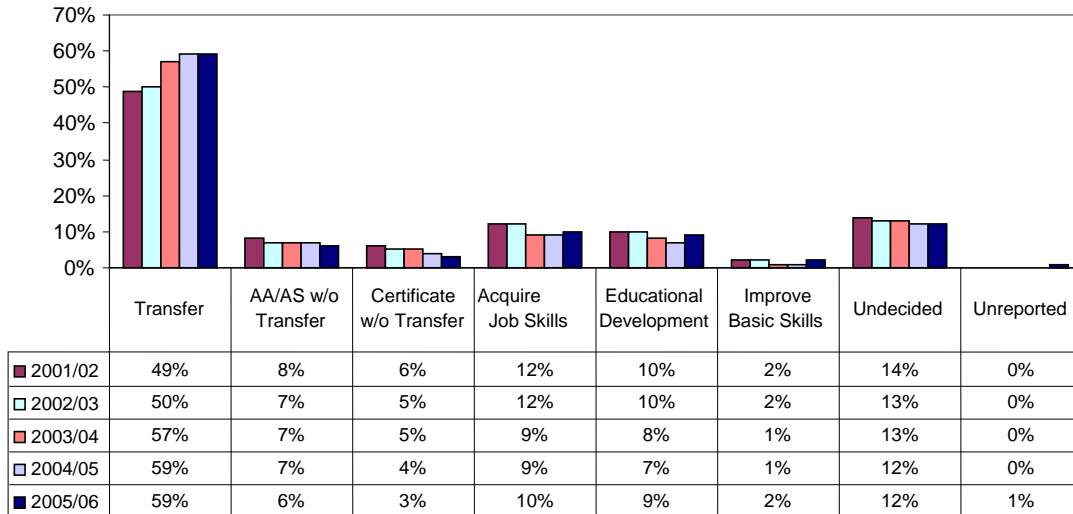
The majority of students (59% on average) are continuing students which is consistent with the average fall to spring term persistence rate of 64%. Although the pipeline of first time students from Skyline’s feeder high schools is shrinking and expected to continue to shrink over the next five to ten years, the percentage of incoming first-time students has remained steady over the past four years at about 9% of the population on average each year. The majority of students continue to select transfer as an education goal (63% on average) and with a decreasing number of students selecting certificate without transfer, acquire/update job skills or educational development.



Source: SMCCCD Data Warehouse

**Figure 5. Enrollment by Status**

815  
816



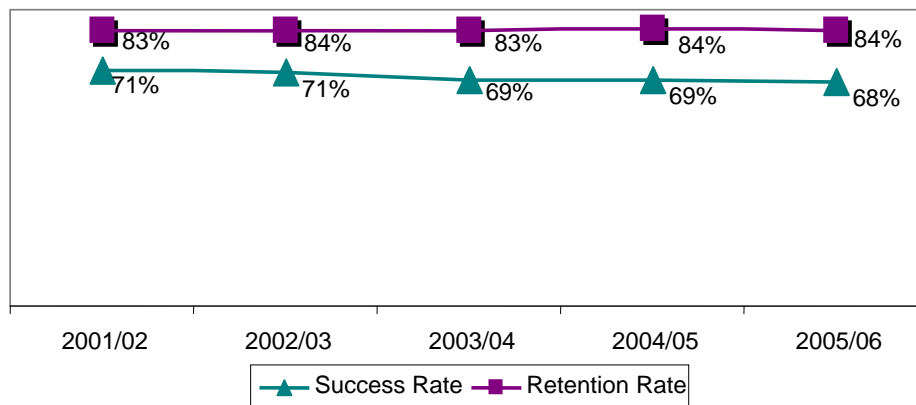
Source: SMCCCD Data Warehouse  
**Figure 6. Enrollment by Education Goal**

817  
 818  
 819  
 820  
 821  
 822  
 823  
 824  
 825

### Student Outcomes

The college-wide annual success rate has varied over the past five years from 71% in 2001/02 to 68% in 2005/06 with an average annual success rate of 70%. The retention rate has remained relatively steady at between 83%-84%. Using the Balanced Scorecard process the College has set benchmarks for both the success rate and the retention (70% and 84% respectively) using an average from the previous five years. The College has met or nearly met the benchmark target each year for the past five years.

826  
 827  
 828  
 829  
 830  
 831  
 832  
 833



Source: SMCCCD Data Warehouse  
**Figure 7. College-wide Success and Retention Rates by Year**

834  
 835  
 836  
 837  
 838  
 839  
 840  
 841  
 842

The Asian and White student populations continue to meet or exceed the college-wide benchmarks and annual average for both success and retention rates. Both the Hispanic and Filipino student populations continue to fall slightly below the college-wide benchmark and average for both success and retention but generally hold steady without a significant swing one way or the other. On the other hand, the African American student population continues to fall below the college-wide benchmark and average for success and retention and shows signs of decreasing rates in most years.

	2001/02		2002/03		2003/04		2004/05		2005/06	
	Success	Retention	Success	Retention	Success	Retention	Success	Retention	Success	Retention
African American	66%	83%	60%	79%	52%	77%	52%	80%	55%	79%
Asian	74%	85%	74%	85%	71%	84%	71%	84%	70%	84%
Filipino	68%	80%	67%	82%	66%	83%	67%	84%	65%	81%
Hispanic	68%	83%	67%	83%	64%	81%	65%	83%	65%	83%
Native American	73%	85%	64%	80%	66%	79%	67%	83%	61%	81%
Other	69%	83%	68%	83%	67%	83%	69%	84%	70%	86%
White	75%	85%	75%	85%	75%	87%	74%	87%	73%	86%

844 Source: SMCCCD Data Warehouse

845 **Table 3. Success and Retention Rates by Ethnicity**

846

847 The retention rate for basic skills courses (i.e., English, Reading, Math and ESL) has risen over the  
 848 past five years from 79% in 2001/02 to 84% in 2005/06, and exceeded the college-wide retention rate  
 849 in 2004/05. However, the success rate for basic skills courses has fallen from 62% in 2001/02 to 60%  
 850 in 2005/06 and continues to be 8-11 percentage points below the college-wide success rate each year.  
 851 However, the Basic Skills Improvement Rate reported in the Partnership For Excellence as the  
 852 percentage of students who enrolled in a basic skills English or math course and then completed a  
 853 higher level course in the same subject area with a grade of D or better, indicates that Skyline students  
 854 have exceeded the statewide average for the past five years (36% as compared to 27% statewide).  
 855

856

857

858

859

860

861

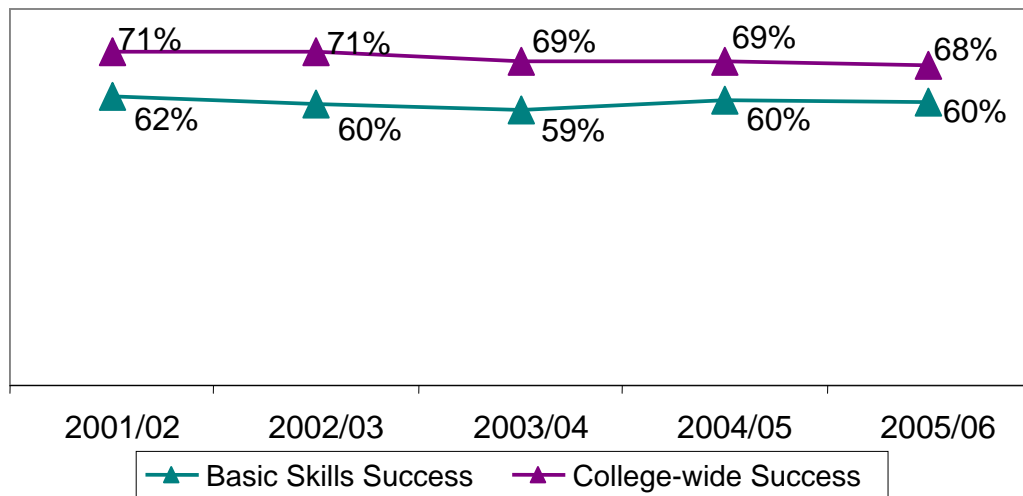
862

863

864

865

866



867

Source: SMCCCD Data Warehouse

868

**Figure 8. College-wide Compared to Basic Skills Success Rates**

869

870

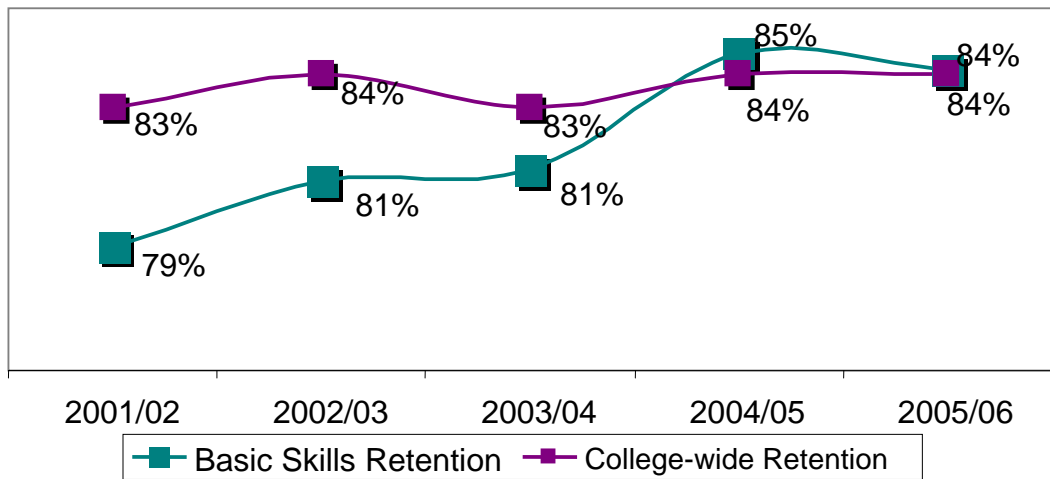
871

872

873

874

875  
876  
877  
878  
879  
880  
881  
882  
883  
884  
885  
886  
887  
888  
889  
890  
891  
892  
893



Source: SMCCCD Data Warehouse

**Figure 9. College-wide Compared to Basic Skills Retention Rates**

Skyline College awarded 4,524 degrees and certificates between 2001 and 2005. Of these, 40% were associate degrees while the remaining were certificates. The number of associate degrees awarded between 2001/02 and 2005/06 has steadily increased each year, while the number of certificates awarded each year has fluctuated up and down. The highest number of awards conferred continues to be among the Asian and White student populations, consistent with Skyline's enrollment trends. There have also been slight increases in the number of awards conferred among Hispanic and Filipino students but no steady trends that indicate a particular strategy or intervention might be causing the shift. Students between the ages of 18-22 and 23-28 continue to those who receive the bulk of the degrees and certificates awarded (39% and 30% respectively).

	2001/02	2002/03	2003/04	2004/05	2005/06	Total
Associate Degree	350	346	352	373	400	1,821
Certificate - 30 to less than 60 units	27	97	54	66	33	277
Certificate - Less than 30 units	408	633	482	449	455	2,427
<b>Total</b>	<b>785</b>	<b>1,076</b>	<b>888</b>	<b>888</b>	<b>888</b>	<b>4,525</b>

894  
895

Source: SMCCCD Data Warehouse

**Table 4. Skyline College Awards Conferred**

	2001/02	2002/03	2003/04	2004/05	2005/06	Total
Accounting	15	16	15	21	16	83
Administration of Justice	8	2	11	5	14	40
Administrative Assistant	2	3	3	2	5	15
Allied Health	5	2	4	7	17	35
Art	2	2	4	6	3	17
Automotive Technician		2		1	1	4
Automotive Technology	6	5	3	4	6	24
Biotechnology	2	2		2	2	8
Business Administration	28	27	30	25	26	136
Business Information Systems	1	2		2	1	6
Computer Info Specialist	4	8	4	5	4	25
Cosmetology	1		1	3	3	8
Dance			3	2		5
Early Childhood Education	11	10	18	26	21	86
English	1	2		2	3	8
Fashion Merchandising	2	2	3	2	2	11
Hotel Operations	2					2
Image Consulting			1	1		2
International Trade	1	1	4	1		7
Journalism				1		1

Legal Secretarial	1	2		2		5
Liberal Arts	141	149	136	149	165	740
Lifespan			2			2
Marketing		1	1	2	1	5
Marketing and Sales	1			1		2

896 **Table 5. Associate Degrees Awarded**

897

	2001/02	2002/03	2003/04	2004/05	2005/06	Total
Mathematics	4	4	8	4	3	23
Medical Transcriber	1		1			2
Meetings & Convention Management	1		1			2
Music		2	1		1	4
Natural Science	8	8	7	8	9	40
Network Engineering					1	1
Office Assistant		1	2	2	2	7
Office Information Systems			1			1
Paralegal/Legal Assistant	5	3	6	5	8	27
Physical Education					1	1
Psychology	3	4	8	3	2	20
Respiratory Therapy	12	7	6	18	25	68
Spanish					1	1
Surgical Technology	3	2	2	3	5	15
Telecom. & Wireless Tech.				1	1	2
Telecommunications Tech.	13	11	10	7	2	43
Toyota Technical Education Network	1	1	1	1	1	5
University Studies	58	62	50	47	46	263
Web Developer	7	3	5	2	2	19

899

Source: SMCCCD Data Warehouse

900

**Table 5. Associate Degrees Awarded (cont.)**

901

	2001/02	2002/03	2003/04	2004/05	2005/06	Total
Business Administration	5	37	13	6	5	66
Cosmetician/Aesthetician				1		1
Cosmetology	3	12	2	12	3	32
Fashion Merchandising	1	3		2		6
Hotel Operations	2		1	1		4
Journalism				1		1
Network Engineering					6	6
Office Information Systems	1					1
Professional Secretary	1					1
Respiratory Therapy	2	10				12
Secretarial/Administrative Assistant	1					1
Surgical Technology		16	28	36	15	95
Telecom. & Wireless Tech.					3	3
Telecommunications Tech.	11	19	10	7	1	48

902

Source: SMCCCD Data Warehouse

903

**Table 6. Certificates Awarded with 30 to Less Than 60 Units**

904

	2001/02	2002/03	2003/04	2004/05	2005/06	Total
Accounting	11	33	10	10	15	79
Accounting Assistant I	2	3		5	1	11
Accounting Computer Specialist					3	3
Administration of Justice		5	6	4	4	19
Administrative Assistant	2	5	6	2	1	16
Advanced Engine Performance	20	20	26	25	27	118
Biotechnology Manufacturing					26	26
Business Administration	1	1				2
Business Information Systems	1	4		1	1	7
Central Services. Tech. w/Clinical		24	11	18	15	68
Central Service Technology				5	3	8
Chassis Technology	25	38	26	45	38	172
Computer Info Specialist	10	15	12	8	6	51
Cosmetician/Aesthetician	23	53	2	16		94
Drive Train Technology	23	39	44	37	33	176
Early Childhood Education	31	60	65	41	36	233
Electricity/Electronics Tech.	29	36	39	42	41	187
Emergency Medical Technician I	68	41	53	47	65	274
EMT Refresher	16	34	8			58
Engine Performance	16	17	22	24	27	106
Engines Technology	39	42	43	46	40	210
General Merchandising		2				2
General Supervision		1				1
Hotel Operations	1					1
Image Consulting				1		1
International Business					1	1
International Trade		6	3	2	5	16
Legal Secretarial	2	5	4	1	1	13
Lifespan			1			1
Marketing	1				1	2
Marketing and Sales	1					1
Medical Transcriber	1	1				2
Office Assistant	2	2	12	7	2	25
Paralegal/Legal Assistant	3	22	21	17	9	72
PC Config. & Repair Endorse.					3	3
PC Configuration and Repair	8	23	7	3	4	45
Telecom Wiring & Installation	11	19	2	1		33
Telecommunications						
Networking	8	20	10	1	4	43
Toyota Brake Chassis Air Condt		21		17		38
Toyota Electrical Technology	13	1	23		21	58
Toyota Engine & Drive Train		22		17		39
Toyota Engine Performance	17	1	19		19	56
Web Developer	23	17	7	6	2	55
Wiring & Install. Skill Endors					1	1

906

Source: SMCCCD Data Warehouse

907

**Table 7. Certificates Awarded with Less than 30 Units**

908

909

910 Skyline has transferred 3,718 students to the CSU system over the past ten years and 716 students to  
911 the UC system. The primary transfer institutions continue to be UC Berkeley and UC Davis (66% of  
912 UC transfers between 1996/97 and 2005/06 were to UC Berkeley and Davis), and the following San  
913 Francisco State University continues to be the leading CSU transfer institution (78% of CSU transfers  
914 between 1996/97 and 2005/06). Transfer rates by ethnicity are somewhat reflective of the student  
915 population and their education goal. On average 60% of Skyline's Black student population declare  
916 transfer as an education goal and 2% of the total who transfer are Black students. Similarly, 58% on  
917 average of the Hispanic students declare transfer and on average 14% of those students who transfer  
918 are Hispanic.  
919

