

Class 3 Guitar I and Guitar II

- New chords are C, Em and D7 (D Dominant 7 chord) – may not get to that chord. As a review there are so far 3 types of chords – Major, Minor, and Dominant 7 chords. There are 2 other types that are used much less: Diminished, and Augmented.
- New strum is bass – Sweep strum. Time permitting Bass Brush strum.
- Will also work on tuning. Two different methods.
- Look at outlines for rest of what is covered.
- Using the C and Em Chord.
- Guitar II new fingerpicking.
- More CAGED.

Last Week

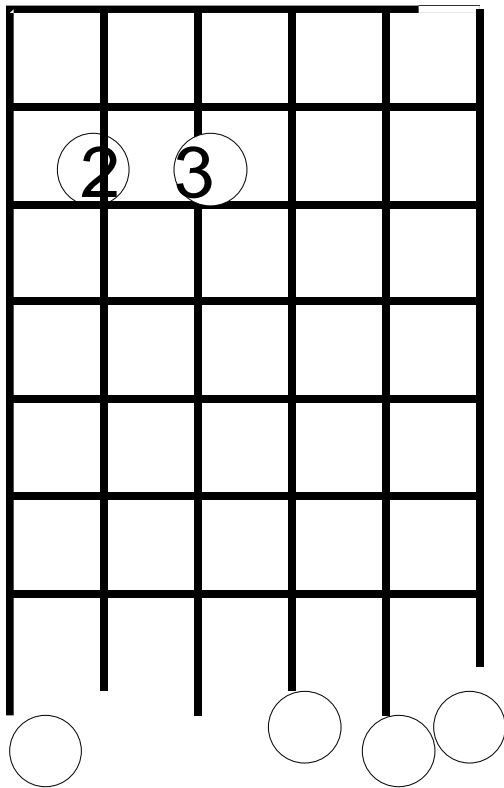
- Can talk about if you want.
- Will put us 1 week behind – not a big deal.
- Gave you more time to perfect chords.

Surfin USA from Book

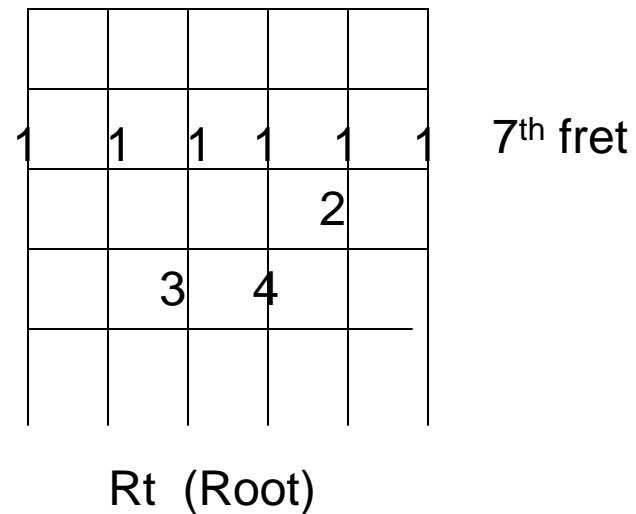
The Em Chord

- Be sure to use the 2nd and 3rd fingers only.

Em (E Minor Chord)



Em (Guitar II)



Let's try going from D to Em

- 4/4 ||: D | | | | Em | | | | :|| (repeat)
(Remember to count while you play!)
Now 2 measures each:
4/4||: D | | Em | | D | | Em | | :||
Lastly, one measure each:
4/4 ||: D | Em | D | Em :||
Remember don't stop when you change.
No matter what happens!!!!!!!!!!!!!!

Don't Be Cruel

The image shows a musical score for the song "Don't Be Cruel" in G major (one sharp) and 4/4 time. The score consists of six staves of music with lyrics underneath. Chords are indicated by letters above the notes. A large red bracket encompasses the first three staves. A red arrow points from the title to the first staff. Another red arrow points to a double bar line in the second staff. Handwritten red text "1st only" and "2nd" is written above the first and second endings of the third staff, respectively. A red arrow points from the "2nd" annotation to the second ending. The lyrics are: "You know I can be found sit-ting home all a-lone if you can't come a-round at least please tel-e-phone, Don't be cruel to a heart that's true. I don't want nooth - elove ba-by it's just you I'm think - ing of. Don't stop thinking ofme don't make me feel this way. Come on over here andlove me you know what I want you say. Don't be cruel to a heart that's true."

Chords: D, G, D, Em, A7, D, G, A7, G, A7, D, G, A7, Em, A7, D, G, A7, G, A7, D.

Handwritten annotations: "1st only", "2nd".



cruel to a heart that's true. I don't

G A7 G A7 D



want noth - elove ba-by it's just you I'm think - ing of.

G



Don't stop thinking of me don't make me feel this way. Come on over here and love

D Em A7 D



me you know what I want you say. Don't be cruel to a heart that's true.

G A7 G A7 D



Why should we be a-part I really love you baby croww my heart.

Em A7 D Em



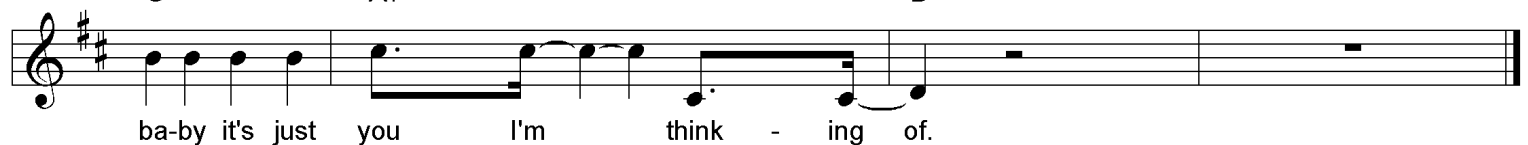
Don't be cruel to a heart that's true. Don't be cruel

A7 D G A7



to a heart that's true. I don't want no oth-er love

G A7 D



ba-by it's just you I'm think - ing of.

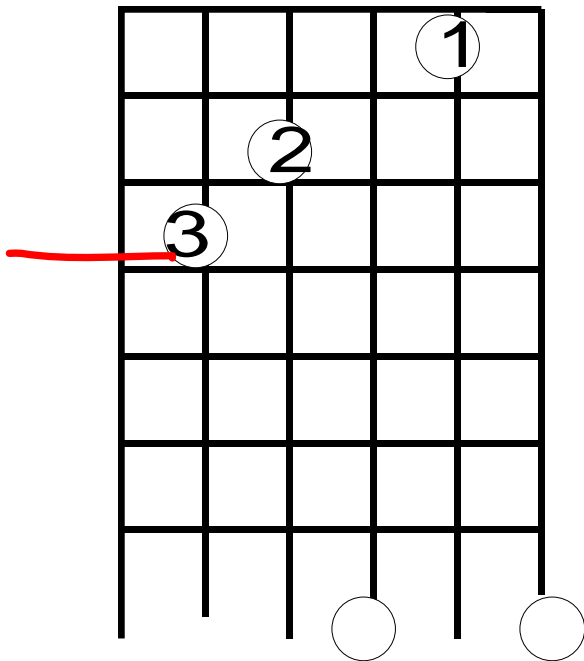
The C Major Chord

When there is just a letter name it means major. C Major is usually written as just a 'C'.

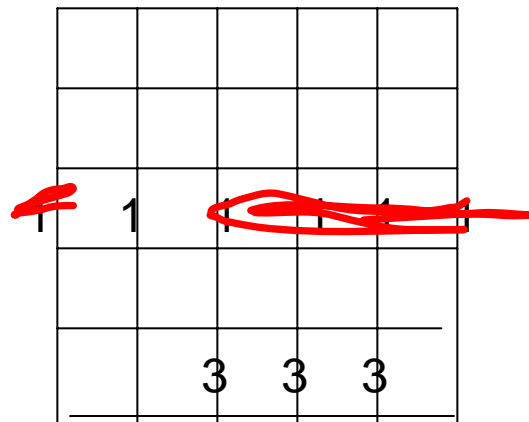
On this chord do not hit the 6th string.

Curving the fingers is very important on this chord.

C Major



C (Guitar II)



RT

A whole progression



- 4/4||: G | Em | C | D :||
 - Play slowly and evenly.
 - If you have trouble play just the change you have trouble with until you play that part perfectly.
 - See if you can't find songs that use this set of chord changes.

Time Of Your Life

G C D (Each Line)

Another turning point a fork stuck in the road
Time grabs you by the wrist directs you where to go

Tab 2

Em D C G
So make the best of these days and don't ask why
It's not a question but a lesson learned in time

Chorus

Em G Em G
It's something unpredictable in the end it's right
Em D G C D
I hope you have the time of your life.

Verse 2

G C D (Each Line)

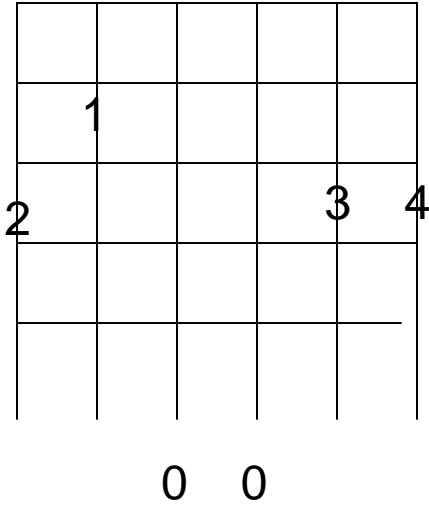
So take the photographs and stillframes in your mind
Hang it on a shelf and goodav than good times

Tatoos and memories and asking on trial
For what it's worth it was worth all the while

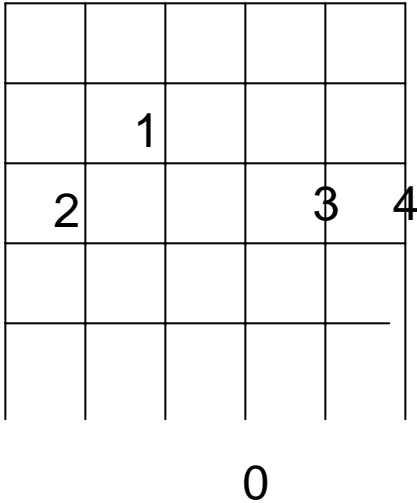
Chorus While the intermediates play this read pages 1-10 in the Guitar Reference.

More advanced chords to Time of Your Life. These are chords that each have a D and a G note on the first 2 strings. This is called a pedal point.

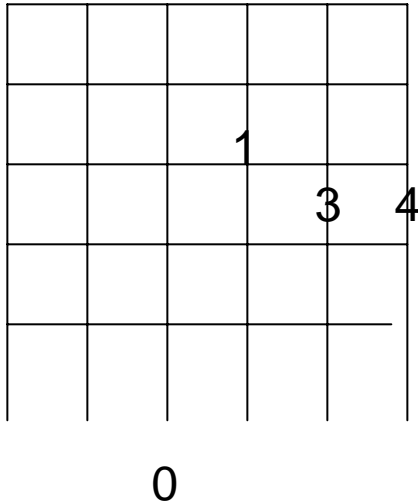
G



C add 9



D sus4



Major and Minor Chords

- Listen to the difference between an Em chord and the C, D and G chords.
- How would you describe the difference.

Time of Your Life

G C D (Each Line)

Another turning point a fork stuck in the road

G C D (Each Line)

Time grabs you by the wrist directs you where to go

Tab 2

Em D C G
So make the best of these days and don't ask wh

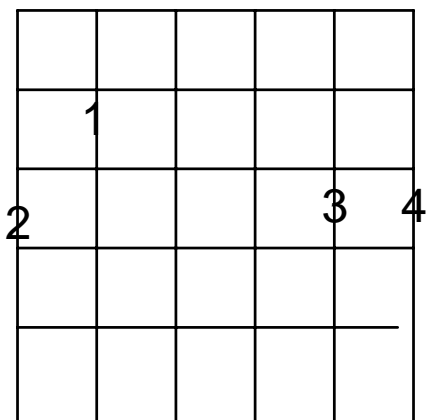
Em D C G
It's not a question but a lesson learned in time

Chorus

Em G Em G
It's something unpredictable in the end it's right

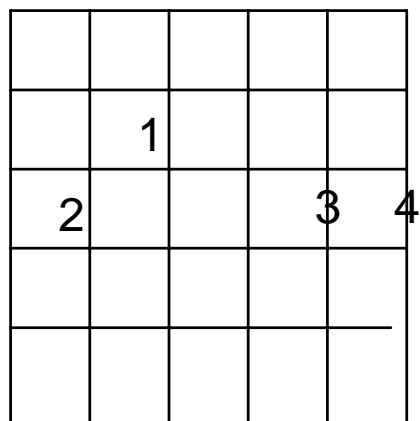
Em D G C D
I hope you have the time of your life.

G



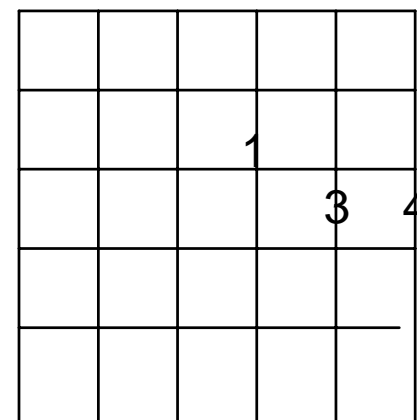
0 0

C add 9



0

D sus4



0

Fingering patterns

- One of the main topics.
- There are only a few logical ways that fingers can go.
- Following is a majority of those fingering with some examples of chords that use these.

Bass Sweep Strum

- For a D chord do the rest stroke on the 4th string.
- Then follow through and play the rest of the first 3 strings. This is called a sweep. The strum is the bass sweep strum.
- Count as follows beat 1 hit the 4th string with the thumb, beat 2 do a sweep, beat three the bass (4th string) and beat 4 a sweep.

A whole progression



- 4/4||: G | Em | C | D :||
 - Play slowly and evenly.
 - If you have trouble play just the change you have trouble with until you play that part perfectly.
 - See if you can't find songs that use this set of chord changes.

Major and Minor Chords

- Listen to the difference between an Em chord and the C, D and G chords.
- How would you describe the difference.

Timing

- Look at the timing page in your book (page 11).
- Try Whole notes, then 1/2 notes, then 1/4 notes.

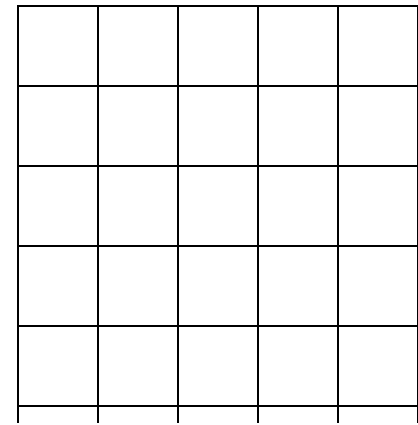
Names of the notes on the open strings.

Below are the names of the notes on the open strings.

These need to be memorized. From the lowest pitch to the highest pitch: E, A, D, G, B and E. Note that the 6th string is called 'low E' and the 1st string is called 'high E'.

Below is where the open strings are written on the staff!

Open Strings



F. Markovich E A D G B E

Guitar

Guitar

The image shows a musical score for guitar. The top staff is a treble clef with a common time signature (C). It contains six measures, each with a single note on the first line of the staff. The notes are E, A, D, G, B, and E. The bottom staff is a tablature staff with six lines. The first line is labeled 'T', the second 'A', and the third 'B'. The notes are represented by numbers 0, 0, 0, 0, 0, and 0, indicating open strings.

Bass Brush Strum

- Almost the same as Bass Sweep. But instead of a sweep you will brush the strings with the back of the nails of your index – ring fingers.
- To do the Brush have the fingers curved and then just release them across the strings so that the fingernails strike the strings. They must strike all at the same time.
- Try to the same songs we did the bass sweep to. Take your time.
- Notice the difference in the sound of this to the sweep strum.

Tom Dooley

D

A7

4/4 ||: Hang down your head Tom | Dooley | Hang down your head and | cry. |

A7

D D

Hang down your head Tom | Dooley | Poor boy you're bound to | Die :|| ||

Met her on the mountain, swore she'd be my wife. Met her on the mountain & stabbed her with r
This time tomorrow I reckon where I'll be. Down in the lonesome valley hanging from a white oak

Guitar II students play the melody!!

The Long Black Veil (3:05)

(D) Ten years ago on a cold dark night
(A) Someone was killed 'neath the town (G) hall lights (D)
(D) There were few at the scene but they all agreed
(D) That the (A) slayer who ran looked a lot (G) like me (D)

She (G) walks these hills (D) in a (G) long black veil (D)
She (G) visits my grave (D) when the (G) night winds wail (D)
Nobody knows (G) nobody sees (D)
(G) Nobody (A) knows but me (D)

The judge said, "Son, what is your alibi
If you were somewhere else then you won't have to die."
I spoke not a word though it meant my life
For I'd been in the arms of my best friend's wife

Now the scaffold is high and eternity's near
She stood in a crowd and shed not a tear
But sometimes at night when the cold wind moans
In a long black veil she cries o're my bones

She walks these hills in a long black veil
She visits my grave when the night winds wail
Nobody knows nobody sees
Nobody knows but me

Nobody knows nobody sees
Nobody knows but me

Big Yellow Taxi

Verse :

 G G G G D
They paved paradise and put up a parking lot
 G G A A
With a pink hotel, a boutique and a swingin'
 D
hot spot

CHORUS:

 D D
Don't it always seem to go

 G D
That you don't know what you've got till it's gone

 G G A A D
They paved paradise and put up a parking lot

D
(Shoo bop bop bop bop

D
Shoo bop bop bop bop)

(Same chords for the following verses/choruses)

They took all the trees, put 'em in a tree museum
And they charged the people a dollar and a half just to see 'em
CHORUS

(Same chords for the following verses/choruses)

They took all the trees, put 'em in a tree museum
And they charged the people a dollar and a half just to see 'em
CHORUS

Hey farmer farmer, put away that D.D.T. now
Give me spots on my apples but leave me the birds and the bees
please
CHORUS

Late last night I heard the screen door slam
And a big yellow taxi took away my old man
CHORUS TWICE (with only one shoo bop... at each end)

They paved paradise, put up a parking lot

(Shoo bop bop bop bop)

They paved paradise, put up a parking lot

Reading Tablature

- Read page 19 in Guitar Reference!!

$\frac{3}{4}$ time

- In $\frac{3}{4}$ time the quarter note gets one count and there are 3 beats or counts per measure.
- Beat #1 is accented. Think of it like the following: 1 2 3 | 1 2 3 | 1 2 3 | etc.
- For $\frac{3}{4}$ time you usually count 2 measures to give you the tempo (rate of speed) of the song.

Amazing Grace

3/4 ||: D | | G | D | | | A7 | | D
Am azing Grace, how sweet the sound, That saved a wretch I like me. I once was
D | G | D | | | A7 | D | :|| alternate end. | A7 | G | D ||
lost, but now am found, Was blind, but now I see. now I see

'Twas grace, that taught my heart to fear, And grace my fears relieved.
How precious did that grace appear, The hour I first believed.

Through many dangers, toils and snares, I have already come.
'Tis grace hath brought me safe, thus far, And grace will lead me home.

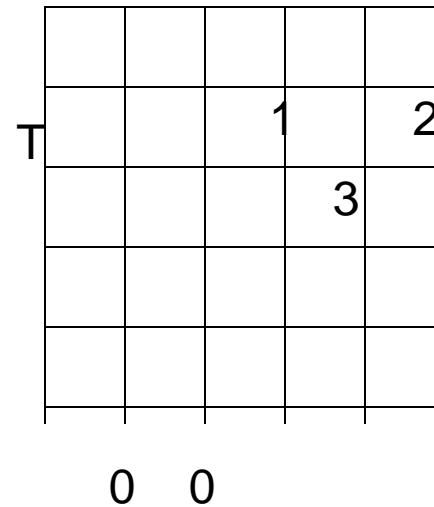
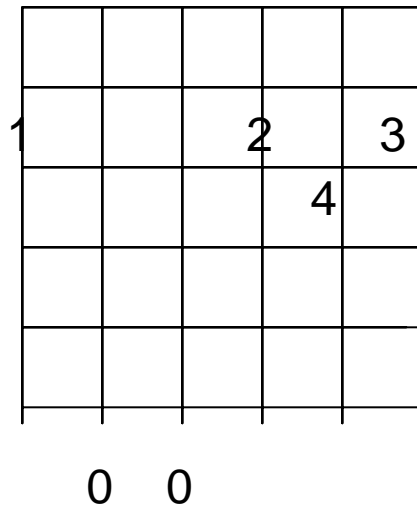
When we've been there ten thousand years, bright shining as the sun,
We've no less days to sing God's praise, Than when we first begun.

Amazing Grace, how sweet the sound, That saved a wretch like me.
I once was lost, but now am found, Was blind, but now I see.

Take this song very slowly. Chord progression repeats for each verse.
This is in the key of D. One way to tell is that the first and last chords are both
'D', For Guitar 2 students use the D Major Pentatonic Scale to play the melody
start on the 3rd string 2nd fret (A). If you get really into it add the chords.

Guitar II

D/F# (Means a D chord with an F# in the Bass)

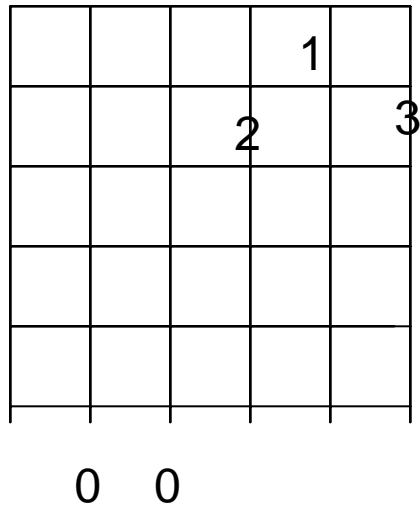


Either of these fingerings will work. I prefer the 2nd one for me. Put this in on Amazing Grace as the 2nd measure of D when D goes to a G chord in the next measure.

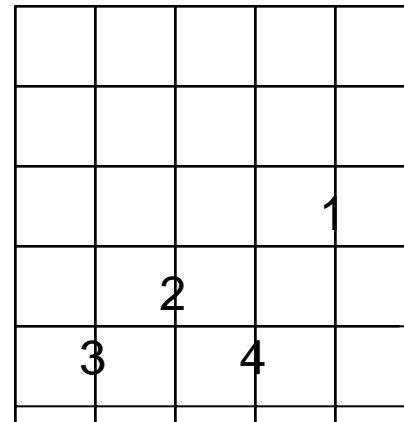
This is very common when D is changing to G. For you theory buffs this is a D chord in 1st inversion with the 3rd in the bass.

The D7 Chord

D7



D7 (Guitar II)



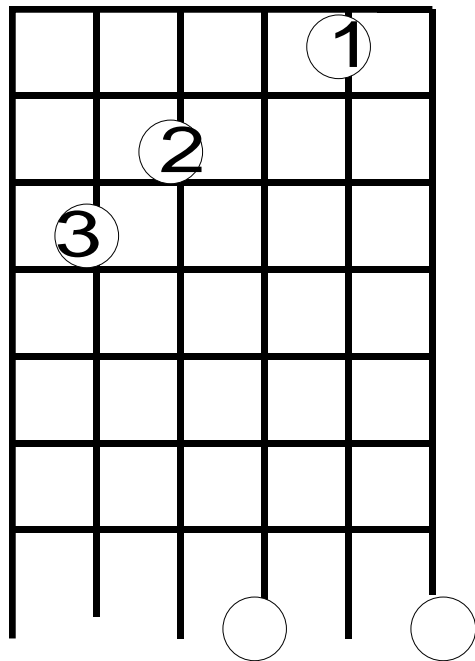
The C Major Chord

When there is just a letter name it means major. C Major is usually written as just a 'C'.

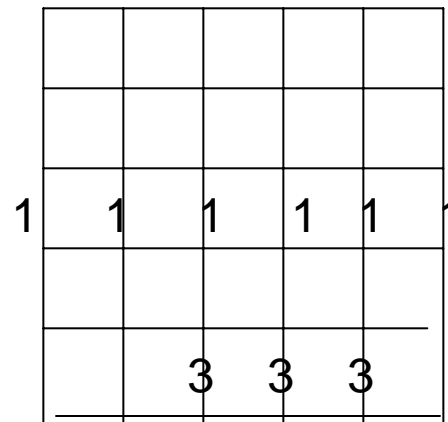
On this chord do not hit the 6th string.

Curving the fingers is very important on this chord.

C Major



C (Guitar II)



RT

Here is Amazing Grace in the key of G.

3/4 ||: G | | C | G | | | D7 | | G
Am azing Grace, how sweet the sound, That saved a wretch I like me. I once was
G | C | G | | | D7 | G | :|| D7 | C | G ||
lost, but now am found, Was blind, but now I see. now I see

It is very common to have songs in almost any key. Some of you may find that the key of D is harder to sing than the key of G. By the way when we say that a song is in the key of D we really mean D major. The major is just assumed.

Some songs are in minor keys but we won't be able to do any minor keys for a few weeks.

If you were to do bass sweep to $\frac{3}{4}$ you would hit the bass on beat 1 & then chords on beats 2 and 3!

For the int/adv for the 2nd measure of G leading to C play the G chord from the 5th string – do not hit the 6th string and you have the 1st inversion of G.

Under The Boardwalk

The Drifters

Verse 1

G
Oh when the sun beams down and burns the
D7
tar up on the roof.
D7
And your shoes get so hot you wish your
G
tired feet were fire-proof.

Refrain

C G
Under the boardwalk, down by the sea, yeah.
G D7 G
On a blanket with my baby's where I'll be.
Em
Under the boardwalk, out of the sun
D
(Under the boardwalk!), we'll be having some fun,
Em
(Under the boardwalk!) people walking above,
D
(Under the boardwalk!) we'll be falling in love,
Em
under the boardwalk, boardwalk.

Verse 2

From the park you hear the happy sound of the carousel.
You can almost taste the hotdogs and french fries they
sell.

Refrain: <Under the boardwalk...!>

Under the Boardwalk Fills

Guitar

Em7

Guitar

T
A
B

7 7 5 7 7 9 7 5

Slide with ring finger!

3

Gtr.

Rhythmic Part

Gtr.

Bass note

2

Rake Mute Mute

This rhythmic part is difficult at first. Just take your time and you will get it!

Wonderful Tonight

4/4 ||:G |D |C |D |
It's late in the evening. She's wandering what clothes to wear.

G |D |C |D |
She'll put on her make-up and brushes her long blond hair.

C |D |G D |Em |C
And then she'll ask me - do I look all right and I'll say yes you look

D |G |D |C |D | : ||
wonderful tonight.

This is the first verse or part of the song.

When there are 2 chords in a measure of 4/4 time each usually gets 2 beats.

Strum each chord 2 times. This happens in the 3rd line 3rd measure of the song.

See the * for where.

If you do an introduction you would play the first 4 chords.

Wonderful Tonight

4/4 ||:G |D |C |D |
It's late in the evening. She's wandering what clothes to wear.

G |D |C |D |
She'll put on her make-up and brushes her long blond hair.

C |D |G D |Em |C |
And then she'll ask me - do I look all right and I'll say yes you look
(2 beats per chord)

D |G |D |C |D |
wonderful tonight.

G |D |C |D |G |D |
We go to a party and everyone turns to see. This beautiful lady.

C |D |C |D |
That's walking around with me and then she'll ask me

G D |Em |C |D |G |
do you feel all right and I'll say yes I feel wonderful tonight.

G |C |D |G D |Em |
And I feel wonderful cause I see the love light in your eyes and the
(new part - for some the hardest part as the song changes)

C |D |C |D |G |
wonder of it all is that you just don't realize how much I love you.

|D |C |D |G |D |C |D |
It's time to go home now. And I've got an achen head

G |D |C |D |C |D |
so I give her the car keys. She'll help me to bed and then I tell her

G D |Em |C |D |G |
as I turn out the light, I say darling you look wonderful tonight.

Wonderful Tonight

4/4 ||:G |D |C |D |
It's late in the evening. She's wandering what clothes to wear.

G |D |C |D |
She'll put on her make-up and brushes her long blond hair.

C |D |G D |Em |C |
And then she'll ask me - do I look all right and I'll say yes you look

D |G |D |C |D |
wonderful tonight.

G |D |C |D |G |D |
We go to a party and everyone turns to see. This beautiful lady.

C |D |C |D |
That's walking around with me and then she'll ask me

G D |Em |C |D |G |
do you feel all right and I'll say yes I feel wonderful tonight.

G |C |D |G D |Em |
And I feel wonderful cause I see the love light in your eyes and the

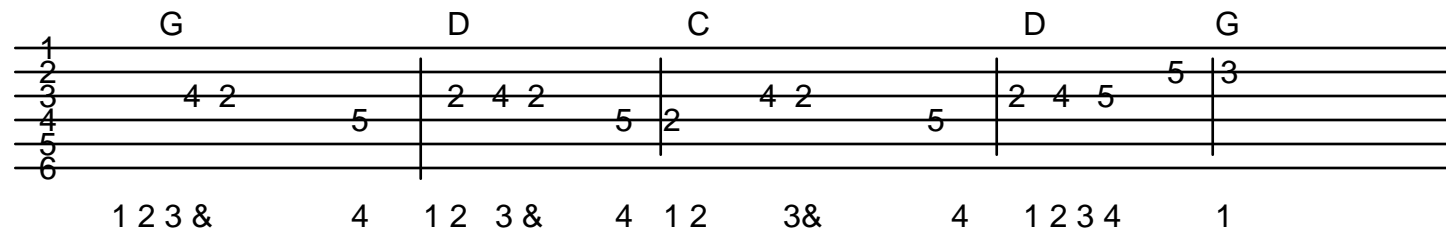
C |D |C |D |G |
wonder of it all is that you just don't realize how much I love you.

|D |C |D |G |D |C |D |
It's time to go home now. And I've got an achen head

G |D |C |D |C |D |
so I give her the car keys. She'll help me to bed and then I tell her

G D |Em |C |D |G |
as I turn out the light, I say darling you look wonderful tonight.

G |C |D |G |D |C |D |G ||
Oh my darling you look wonderful tonight.



Introduction to Wonderful Tonight.

This is in tablature format. Each line is a string. The top line is the 1st or the High E string. The bottom line is the 6th or Low E string.

The numbers indicate which frets to play. For example, the first number is on the 3rd string and is a 4 so you would play the 3rd string 4th fret. The Next note is on the 2nd fret of the 3rd string then the next is the 5th fret of the 4th string (since it is on the 4th line).

Wonderful Tonight Intro

For Beginners 2nd Position

G D C D G

Fingers 3 1 4 1 3 1 4 1 3 1 4 1 3 4 4 2

For Intermediates

G D C D G

4 3 1 3 4 3 1 2 4 3 1 3 3 4 3 1

Best to bend up to 12th fret

For Advanced Players

G D C D G

3 3 3 1 3 3 3 3 1 2 3 3 3 1 1 3 4 3 1

Bend Bend Bend

A whole progression

- 4/4||: G | Em | C | D :||
 - Play slowly and evenly.
 - If you have trouble play just the change you have trouble with until you play that part perfectly.
 - See if you can't find songs that use this set of chord changes.

D7

			1	
		2		3
X	0	0		

The D7 Chord. This is a D dominant 7th chord. Chords with just a number & the letter name are dominant chords. These chords will want to move to another chord.

Practice changing from other chords to this chord.

4/4 ||: G | | D7 | :|| 4/4 ||: G | D7 | G | D7 :||

4/4 ||: C | | D7 | :|| 4/4 ||: C | D7 | C | D7 :||

4/4 ||: A7 | | D7 | :|| 4/4 ||: A7 | D7 | A7 | D7 :||

4/4 ||: Em | | D7 | :|| 4/4 ||: Em | D7 | Em | D7 :||

This is the only new chord for this class!!!

Earth Angel

G Em C D7 G Em C
6/8 Earth | |: Angel Earth | Angel | will you be | mine | My darling | dear | love you all the |
D7 G Em C D7 G Em C D7 G Em
time | I'm just a | fool | A fool in | love with | you | | | Earth | Angel Earth | Angel |
C D7 G Em C D7 G Em C D7
the one I a | dore | love you for | ever and | ever | more | I'm just a | fool | A fool in | love with |
G (G7) C G C D7 G (G7) C
you | I | fell for | you | and I | knew the | vision of your | loves loveli | ness | I | hope and I |
C G Em A7 D7 G Em
pray | that someday | I'll be the | vision | of your happi | ness | Earth | Angel Earth | Angel |
C D7 G Em C D7 G Em C
please be | mine | my darling | dear | love you all the | time | I'm just a | fool a | fool in |
D7 G Em C D7 G
love with | you | | | :|| ||

Note that this song is in 6/8 time. There are 6 beats or counts per measure they are grouped into two groups of 3: 1, 2, 3, 4, 5, 6 with accents on beats 1 and 4. You will strum each chord 6 times per measure.

Do Stand by Me In book

- We will transpose this:
 - A = G
 - F# (F Sharp)m = Em
 - D = C
 - E or E7 = D
- For Guitar II use capo at the 7th fret:
 - G = C
 - Em = Am
 - C = F
 - D or D7 = G or G7

Summertime Blues

- Transpose to G the key most people do it in.
 - E = G
 - A = C
 - B or B7 = D
- Guitar II Play Barre chords – Do G at the 3rd fret E form, C at the 3rd fret A form and D at the 5th fret A form.
- Guitar II can do capo also at the 3rd fret – G is E form, C is A form and D is B7 form.

Time Of Your Life

G C D (Each Line)

Another turning point a fork stuck in the road
Time grabs you by the wrist directs you where to go
Tab 2

Em D C G
So make the best of these days and don't ask why
It's not a question but a lesson learned in time

Chorus

Em G Em G
It's something unpredictable in the end it's right
Em D G C D
I hope you have the time of your life.

Verse 2

G C D (Each Line)

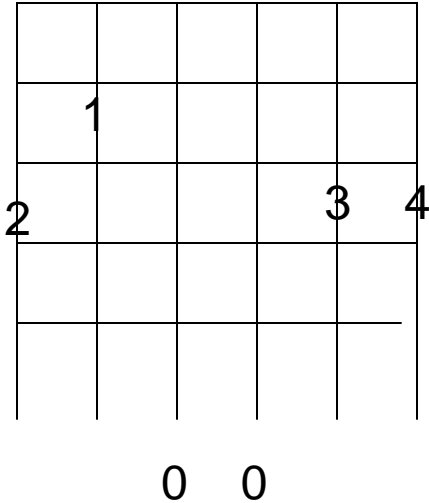
So take the photographs and stillframes in your mind
Hang it on a shelf and goodav than good times

Tatoos and memories and asking on trial
For what it's worth it was worth all the while

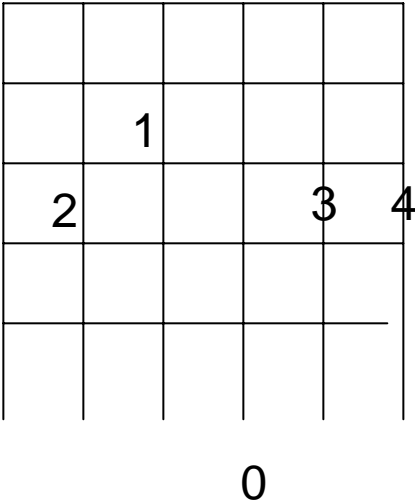
Chorus

More advanced chords to Time of Your Life. These are chords that each have a D and a G note on the first 2 strings. This is called a pedal point.

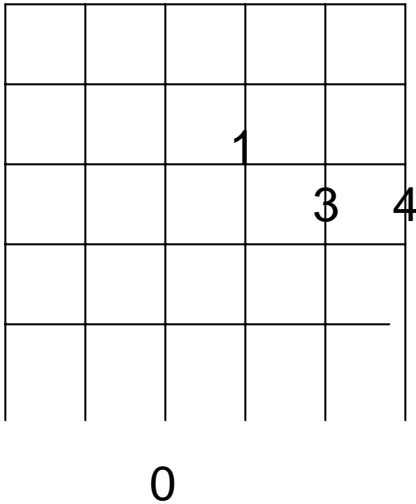
G



C add 9



D sus4



Brown Eyed Girl

G **C G** **D G** **C**
||: Hey, where did we | go | days when the rains | came. | Down in the | hollow |
G D G
playin' a new | game. | Laughin' and a |
C G D G C G
runnin', hey, hey, | Skippin' and a | jumpin, | In the misty morn | ing fog with | our |
D C D G Em C D
hearts a thumpin' and | you | My Brown Eyed Girl, | | | You're my | Brown Eyed
G D G C
Girl. | Do you remem- | ber when | we used to sing | Sha la la la | la la la la |
G D G C G D
la la la te da. | | Sha la la la | la la la la | la la la te da. | la te da.:| |

G C G D G C G D G
| | | | | ||: Sha la la la | la la la la | la la la te da. | :|| ||

Brown Eyed Girl Fills

Intro G C G D

1

This is an exercise in 3rd's Thirds are very consonant and what all chords are made of in traditional harmony. The first 2 notes of each of the measures are the root and 3rd of the chord. The 2nd 2 notes are passing tones and the 3rd group of 2 notes are the 3rd and the 5th of the chord (this applies to the G and C Chords). For the D chord it is outlining the chord with the root then 3rd a passing tone then the 5th of the chord

Give Me One Reason

G C D G
Give me one reason to stay here and I'll turn right back around.

C D G
Give me one reason to stay here and I'll turn right back around.

D
I said I don't wanna leave you lonely,
C G (D)

You've gotta make me change my mind.
G C D G
baby I got your number and I know that you got mine.

C D G
You know that I called you, I called too many times.

D
You can call me baby
C G (D)
You can call anytime, Cut you got to call me.

The chords go:

||: G | G C | G | | C | C D | G | | D | C | G | D :||

Work on them this way before trying to apply to the song.

Tuning Your Guitar

Read Tuning Section in Guitar
Reference.

Care of Your Guitar

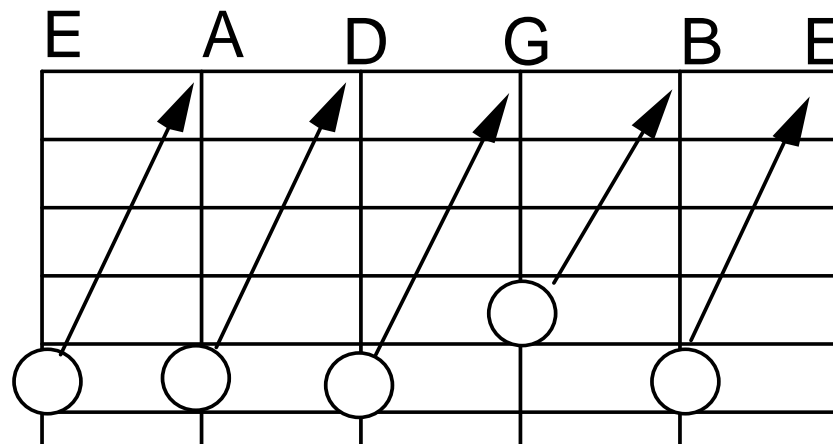
Your guitar is made out of wood and common sense should prevail. The most important thing to to avoid changes in temperature and humidity. This is particularly true of rapid changes. These changes can cause the wood to crack or warp. Many people do not understand this and actually do damage the instrument that is both expensive and detrimental to the sound the instrument will produce. To keep the guitar in a climate controlled room. Avoid such places as the trunk of your car, adjacent to a wall heater, etc. If possible keep the guitar in its case as much as possible.

Clean your guitar on a regular basis and polish it using a fine guitar polish such as the Martin brand. Do not polish the fingerboard. Follow the directions on the package.

Tuning Your Guitar

It is important that you keep your guitar in tune at all times. It does not necessarily need to be in 1 with concert pitch (although that is desirable), but at least in tune with itself. There are many way which to tune your guitar but following is the most straightforward manner.

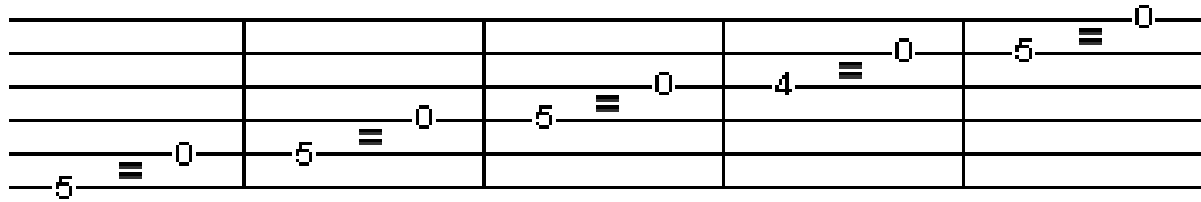
1. Tune your first string to a known note. An "E" tuning fork is ideal. Remember to raise the pitch of a string you tighten the string and to lower the pitch of a string you loosen it.
2. To tune the second string to the first string play the second string fifth fret and match that pitch to the first string open.
3. To tune the third string to the second string play the third string fourth fret and match that pitch to the second string open.
4. To tune the fourth string to the third string play the fourth string fifth fret to the third string open.
5. To tune the fifth string to the fourth string play the fifth string fifth fret to the fourth string open.
6. To tune the sixth string to the fifth string play the sixth string fifth fret to the fifth string open.



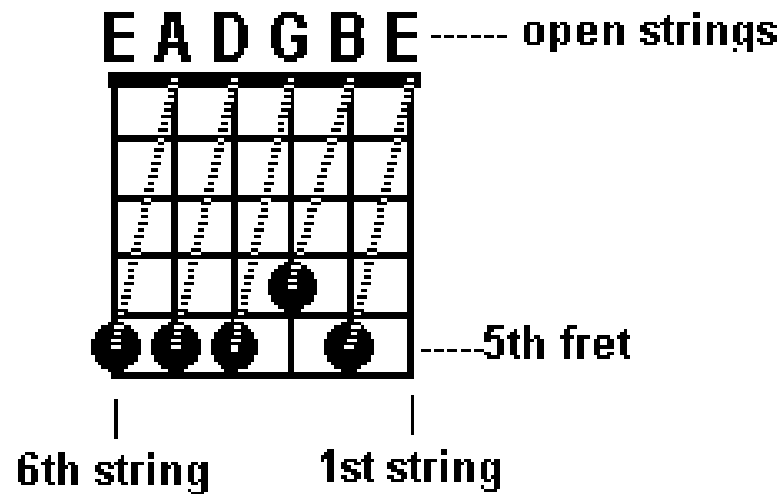
Tuning Your Guitar

- Key is to match pitches.
- Easiest way is as follows:
 - Tune 1st string to a reference.
 - Tune 2nd string by playing 5th fret 2nd string and 1st string open. Adjust 2nd string to match first string.
 - Tune 3rd string by playing 4th fret 3rd string and 2nd string open. Adjust 3rd string to match 2nd string.
 - Tune 4th string by playing 5th fret 4th string and 3rd string open. Adjust 4th string to match 3rd string.
 - Tune 5th string by playing 5th fret 5th string and 4th string open. Adjust 5th string to match 4th string.
 - Tune 6th string by playing 5th fret 6th string and 5th string open. Adjust 6th string to match 5th string.

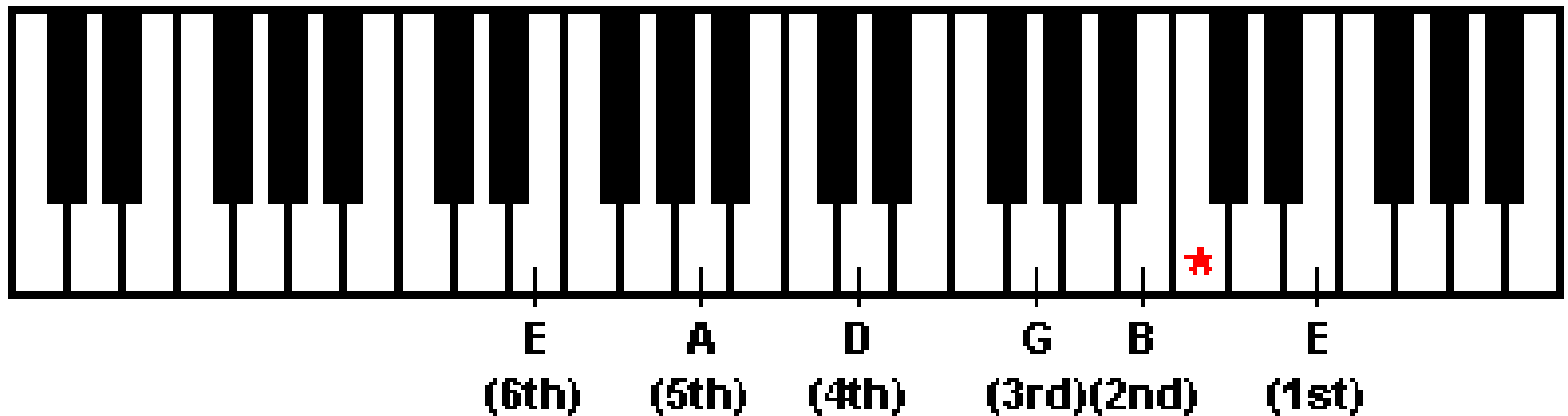
Tablature of the basic relative tuning method



Basic relative tuning in chord chart format



To a Piano or Keyboard

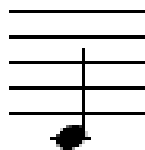


* = middle C

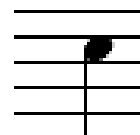
This of course means that the piano itself must be in tune. Another strategy is to tune just one string (typically the high or 1st string) to the piano and then tune the rest of the guitar to that string.

* One important thing to know about the guitar, especially if you have played another instrument. Music for the guitar sounds an octave lower than where it is written. If you try and tune the guitar to the piano thinking that they are exactly the same, you will break all of your strings. You would be trying to tune the guitar an octave higher than where it should be.

Middle C on the piano is
written like this



Middle C on the guitar is
written like this



A *harmonic* is a "bell like" tone that is produced by lightly touching a string of the guitar over some specific fret bars. What we are going to be talking about in this lesson is *natural harmonics*. These harmonics are produced from the open strings of the guitar only. There are other techniques for playing harmonics (artificial harmonics, touch harmonics, tap harmonics, pinch harmonics) but they will be the subjects of another lessons. First we are going to take a look at how to play harmonics, and then look a little more in depth look at what they are. For the moment just think of harmonics as notes on the guitar that have a little different tone than normal notes.

Playing a natural harmonic

Go to the 6th string, and place the tip of any finger above the 12th fret bar. Normally when you play a note at the 12th fret, you are pressing down just to the left of the 12th fret bar. When playing a harmonic, you are going to be very lightly touching the string (not pressing down) over the fret bar, and not to the left. While lightly touching the it, pick the 6th string.

Right after you play the string, lift your left hand finger off. This will let the harmonic note ring louder, and more clearly. If you were to leave your finger on the string, the harmonic would sound, but would be more muffled. If you lift up your left hand finger too soon, then you will hear the open string. This takes a little practice to get the right timing.

Tuning Method 2

The most accurate way I find of tuning my guitar is by using **harmonics**.

Harmonics are done by not actually holding down a string, but just gently touching it lightly. When you strike the string, it should be hard so you get a clear "ping" out of it and not an actual string note. You have to be spot on when using harmonics otherwise if you are a tiny bit off, it won't come out.

Tuning your guitar using harmonics is very similar to the first method. Again, say you have the top string (6th string) tuned correctly;

Step 1:

Place your finger on the 5th fret of the top string.

Step 2:

At the same time, place your other finger lightly on the 7th fret of the 5th string.

Step 3:

Strike both strings at the same time. They should be the exact same 'ping' sound.

If not, one of them is out of tune. Therefore, the 5th string must be adjusted.

Using this technique is more accurate as by striking both strings at the same time, they both produce a very distinct ping sound that is easier to spot if one is out of tune.

Again, this technique works with all the strings, except the 3rd. So, the most accurate way to do this is to use the first tuning method just for this string. The rest are fine to continue on with harmonics method. For the 1st string strike it open and use the 6th string 5th fret harmonic to tune it. Tune the 2nd string to the first using the method described above (5th fret 2nd string harmonic and 1st string 7th fret harmonic).

Harmonics

Some advanced guitarists prefer to tune using string harmonics, which cut out some of the string overtones, leaving a clear, easy-to-hear pitch. This is a little tricky to learn, but it gives a very accurate, resonant, pure-interval-based tuning.

Harmonics are played by touching the string very lightly at the fret, rather than holding it down just below the fret. You must be comfortable with playing harmonics to use this tuning method; it is not recommended for beginners.

Tuning Using Harmonics

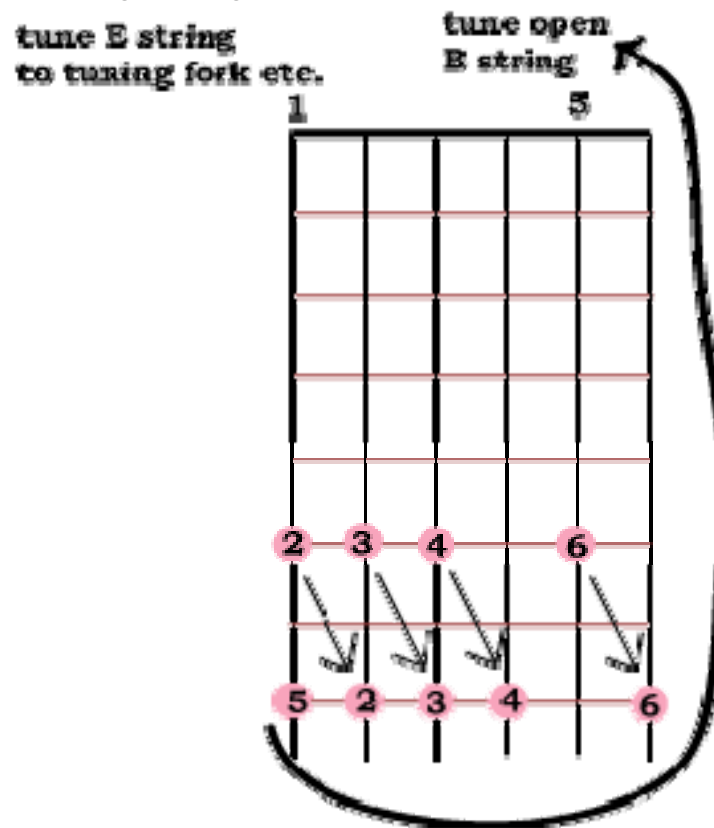


Figure 4
Tuning Using Harmonics

Tuning Using Harmonics

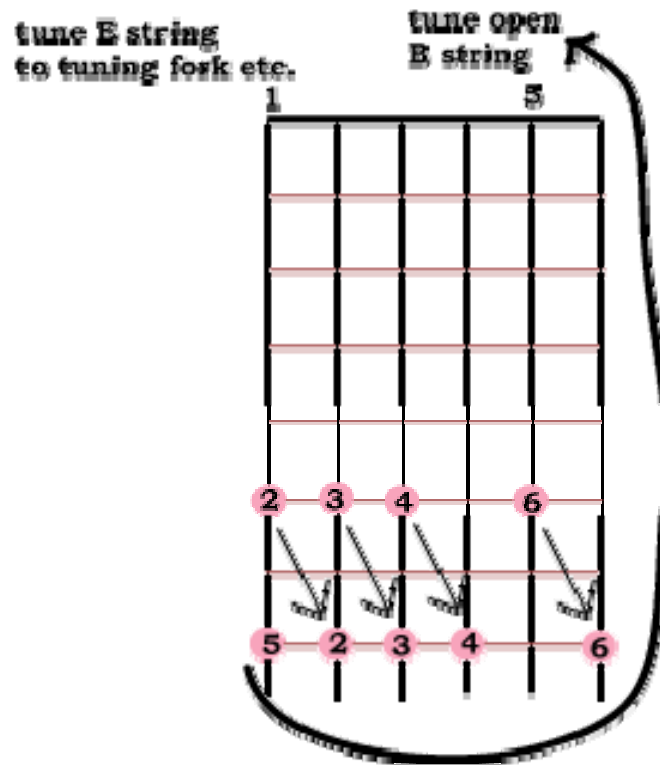


Figure 4
Tuning Using Harmonics

1. Tune the low E string using a tuning fork, keyboard, etc.
2. Tune the A string by matching the harmonic at the fifth fret of the 6th string to the harmonic at the 7th fret of the 5th string.
3. Tune the D string to the A string and the G string to the D string using the same procedure (matching the 7th fret harmonic of the higher string to the 5th fret harmonic of the lower string).
4. Tune the B string by matching the *open B string* to the harmonic at the 7th fret of the 6th string.
5. Tune the top E string to the B string using the 5th fret/7th fret harmonics.
6. Check the tuning using an E's and B's only chord (see [above](#), and adjust as necessary).

Tuning Your Guitar

- Key is to match pitches.
- Easiest way is as follows:
 - Tune 1st string to a reference.
 - Tune 2nd string by playing 5th fret 2nd string and 1st string open. Adjust 2nd string to match first string.
 - Tune 3rd string by playing 4th fret 3rd string and 2nd string open. Adjust 3rd string to match 2nd string.
 - Tune 4th string by playing 5th fret 4th string and 3rd string open. Adjust 4th string to match 3rd string.
 - Tune 5th string by playing 5th fret 5th string and 4th string open. Adjust 5th string to match 4th string.
 - Tune 6th string by playing 5th fret 6th string and 5th string open. Adjust 6th string to match 5th string.

A *harmonic* is a "bell like" tone that is produced by lightly touching a string of the guitar over some specific fret bars. What we are going to be talking about in this lesson is *natural harmonics*. These harmonics are produced from the open strings of the guitar only. There are other techniques for playing harmonics (artificial harmonics, touch harmonics, tap harmonics, pinch harmonics) but they will be the subjects of another lessons. First we are going to take a look at how to play harmonics, and then look a little more in depth look at what they are. For the moment just think of harmonics as notes on the guitar that have a little different tone than normal notes.

Playing a natural harmonic

Go to the 6th string, and place the tip of any finger above the 12th fret bar. Normally when you play a note at the 12th fret, you are pressing down just to the left of the 12th fret bar. When playing a harmonic, you are going to be very lightly touching the string (not pressing down) over the fret bar, and not to the left. While lightly touching the it, pick the 6th string.

Right after you play the string, lift your left hand finger off. This will let the harmonic note ring louder, and more clearly. If you were to leave your finger on the string, the harmonic would sound, but would be more muffled. If you lift up your left hand finger too soon, then you will hear the open string. This takes a little practice to get the right timing.

Tuning Method 2

The most accurate way I find of tuning my guitar is by using **harmonics**.

Harmonics are done by not actually holding down a string, but just gently touching it lightly. When you strike the string, it should be hard so you get a clear "ping" out of it and not an actual string note. You have to be spot on when using harmonics otherwise if you are a tiny bit off, it won't come out.

Tuning your guitar using harmonics is very similar to the first method. Again, say you have the top string (6th string) tuned correctly;

Step 1:

Place your finger on the 5th fret of the top string.

Step 2:

At the same time, place your other finger lightly on the 7th fret of the 5th string.

Step 3:

Strike both strings at the same time. They should be the exact same 'ping' sound. If not, one of them is out of tune. Therefore, the 5th string must be adjusted. Using this technique is more accurate as by striking both strings at the same time, they both produce a very distinct ping sound that is easier to spot if one is out of tune.

Again, this technique works with all the strings, except the 3rd. So, the most accurate way to do this is to use the first tuning method just for this string. The rest are fine to continue on with harmonics method. For the 1st string strike it open and use the 6th string 5th fret harmonic to tune it. Tune the 2nd string to the first using the method described above (5th fret 2nd string harmonic and 1st string 7th fret harmonic).

For next class Guitar I

- Memorize the D, D7, G, A7, C and Em chords
- Go over all of the songs played in class so far.
- Read pages 9, 23, and 19 in Guitar Reference. Listen to tracks 12 + 13 on the CD
- Work on the Bass Sweep and Bass Brush strum to 'I Walk the Line'.
- Review all the material.
- Go over the Timing page (page 11) in the book. Try the 1/8th note rhythms.
- 3/4 time to Amazing Grace, and 6/8 time to Earth Angel.

For next class Guitar II

- Memorize the D, D7, G, A7, C and Em chords as barre chords and with Capo.
- Go over all of the songs played in class so far.
- Work on the Bass Sweep and Bass Brush strum to 'I Walk the Line' along with bass runs.
- Review all the material. Play all the songs gone over tonight.
- Go over the Timing page (page 11) in the book. Try the 1/8th note rhythms.
- ¾ time to Amazing Grace, and 6/8 time to Earth Angel.
- Intro to Brown Eyed Girl.
- Also try into to Don't Be Cruel and Wonderful Tonight.
- Tuning With Harmonics