

Math Department Success and Retention Fall/Spring 2001 to 2006

This report contains success and retention rates by various demographic segments and by course. Annual data are an aggregate of the fall and spring semesters. The following parameters have been applied:

- Success Counts: Number of students with A,B,C,CR grades.
- Success Rate: The percentage of students who complete a course with a grade of A,B,C,CR out of total enrollments.
- Retention Counts: Number of students with A,B,C,D,F,CR,NC, I grades.
- Retention Rate: The percentage of students who complete a course with a grade of A,B,C,D,F,CR,NC, I out of total headcount.

Grade Distribution

	A		B		C		CR		D		F		NC		W	
Fall 2001	350	16%	436	21%	451	22%	7	0%	131	6%	229	11%			487	24%
Fall 2002	384	16%	483	20%	482	21%	3	0%	173	8%	234	10%	7	0%	588	25%
Fall 2003	288	13%	444	20%	473	21%	6	0%	164	8%	297	13%	4	0%	580	25%
Fall 2004	326	15%	387	18%	405	20%	23	1%	140	7%	285	14%	12	0%	564	26%
Fall 2005	326	16%	322	15%	413	20%	46	2%	149	7%	310	16%	20	1%	480	23%
Spring 2002	319	16%	404	20%	420	21%	4	0%	121	6%	190	9%			542	27%
Spring 2003	320	15%	446	21%	449	21%	4	0%	139	7%	218	11%			527	25%
Spring 2004	255	12%	450	22%	457	20%	23	1%	143	7%	255	12%	2	0%	553	26%
Spring 2005	292	14%	362	18%	399	19%	48	2%	138	7%	266	14%	18	1%	498	26%
Spring 2006	295	15%	356	18%	388	20%	61	3%	121	6%	267	14%	14	1%	458	24%

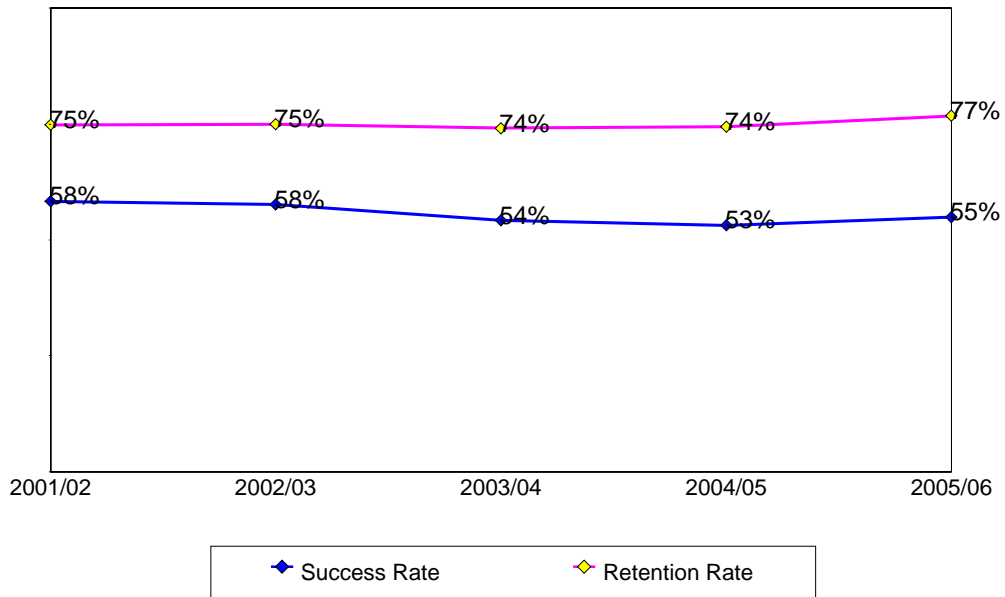
Success and Retention By Term

	Headcount	Success Count	Success Rate	Retention Count	Retention Rate
Fall 2001	2,107	1,250	59%	1,615	77%
Fall 2002	2,378	1,363	57%	1,784	75%
Fall 2003	2,277	1,220	54%	1,686	74%
Fall 2004	2,180	1,143	52%	1,611	74%
Fall 2005	2,118	1,140	54%	1,628	77%
Totals & Averages	11,060	6,116	55%	8,324	75%
Spring 2002	2,016	1,157	57%	1,469	73%
Spring 2003	2,114	1,226	58%	1,584	75%
Spring 2004	2,171	1,191	55%	1,610	74%
Spring 2005	2,052	1,108	54%	1,539	75%
Spring 2006	2,029	1,139	56%	1,557	77%
Totals & Averages	10,382	5,821	56%	7,759	75%

Annual Success and Retention

	Headcount	Success Count	Success Rate	Retention Count	Retention Rate
2001/02	4,123	2,407	58%	3,084	75%
2002/03	4,492	2,589	58%	3,368	75%
2003/04	4,448	2,411	54%	3,296	74%
2004/05	4,232	2,251	53%	3,150	74%
2005/06	4,147	2,279	55%	3,185	77%
Change from 2004/05 to 2005/06	-85	28	2%	35	2%
Totals & Averages	21,442	11,937	56%	16,083	75%

Annual (Fall/Spring) Success and Retention Rates



Success and Retention by Gender

		Headcount	Success Count	Success Rate	Retention Count	Retention Rate
2001/02	Female	2,139	1,321	62%	1,630	76%
	Male	1,955	1,071	55%	1,432	73%
	Unreported	9	5	56%	6	67%
	Totals & Averages	4,103	2,397	58%	3,068	75%
2002/03	Female	2,362	1,452	61%	1,797	76%
	Male	2,113	1,127	53%	1,557	74%
	Unreported	10	8	80%	8	80%
	Totals & Averages	4,485	2,587	58%	3,362	75%
2003/04	Female	2,299	1,290	56%	1,708	74%
	Male	2,124	1,110	52%	1,568	74%
	Unreported	16	8	50%	12	75%
	Totals & Averages	4,439	2,408	54%	3,288	74%
2004/05	Female	2,177	1,231	57%	1,660	76%
	Male	2,032	1,009	50%	1,475	73%
	Unreported	19	8	42%	12	63%
	Totals & Averages	4,228	2,248	53%	3,147	74%
2005/06	Female	2,069	1,214	59%	1,628	79%
	Male	2,031	1,039	51%	1,521	75%
	Unreported	26	18	69%	21	81%
	Totals & Averages	4,126	2,271	55%	3,170	77%

Success and Retention by Ethnicity

		Headcount	Success Count	Success Rate	Retention Count	Retention Rate
2001/02	African American	158	88	56%	115	73%
	Asian	1,201	763	64%	961	80%
	Filipino	833	454	55%	594	71%
	Hispanic	854	422	49%	578	68%
	Native American	22	15	68%	17	77%
	Other	139	80	58%	103	74%
	White	843	542	64%	658	78%
	Unreported	73	43	59%	58	79%
	Totals & Averages	4,123	2,407	58%	3,084	75%
2002/03	African American	174	67	39%	107	61%
	Asian	1,235	775	63%	963	78%
	Filipino	925	512	55%	693	75%
	Hispanic	931	465	50%	664	71%
	Native American	15	7	47%	11	73%
	Other	139	81	58%	107	77%
	White	976	625	64%	748	77%
	Unreported	97	57	59%	75	77%
	Totals & Averages	4,492	2,589	58%	3,368	75%

Success and Retention by Ethnicity

		Headcount	Success Count	Success Rate	Retention Count	Retention Rate
2003/04	African American	196	78	40%	121	62%
	Asian	1,156	674	58%	867	75%
	Filipino	911	469	51%	681	75%
	Hispanic	1,015	496	49%	708	70%
	Native American	13	6	46%	9	69%
	Other	140	72	51%	101	72%
	White	907	551	61%	726	80%
	Unreported	110	65	59%	83	75%
	Totals & Averages	4,448	2,411	54%	3,296	74%
2004/05	African American	187	74	40%	129	69%
	Asian	1,126	603	54%	825	73%
	Filipino	944	510	54%	713	76%
	Hispanic	882	405	46%	634	72%
	Native American	18	11	61%	13	72%
	Other	146	87	60%	113	77%
	White	821	501	61%	644	78%
	Unreported	108	60	56%	79	73%
	Totals & Averages	4,232	2,251	53%	3,150	74%
2005/06	African American	168	65	39%	122	73%
	Asian	1,065	614	58%	807	76%
	Filipino	849	445	52%	652	77%
	Hispanic	924	471	51%	703	76%
	Native American	37	16	43%	25	68%
	Other	143	83	58%	116	81%
	White	741	463	62%	590	80%
	Unreported	220	122	55%	170	77%
	Totals & Averages	4,147	2,279	55%	3,185	77%

Success and Retention by Day/Evening Status

		Headcount	Success Count	Success Rate	Retention Count	Retention Rate
2001/02	Day	2,866	1,574	55%	2,095	73%
	Evening	1,257	833	66%	989	79%
2002/03	Day	3,155	1,746	55%	2,316	73%
	Evening	1,337	843	63%	1,052	79%
2003/04	Day	3,154	1,607	51%	2,272	72%
	Evening	1,294	804	62%	1,024	79%
2004/05	Day	2,929	1,423	49%	2,108	72%
	Evening	1,303	828	64%	1,042	80%
2005/06	Day	2,870	1,438	50%	2,126	74%
	Evening	1,277	841	66%	1,059	83%

Success and Retention by Age

		Headcount	Success Count	Success Rate	Retention Count	Retention Rate
2001/02	Under 18	283	234	83%	259	92%
	Age 18-22	2,548	1,349	53%	1,850	73%
	Age 23-28	711	434	61%	530	75%
	Age 29-39	366	236	64%	273	75%
	Age 40-49	145	107	74%	120	83%
	Age 50-59	60	41	68%	44	73%
	Age 60+	10	6	60%	8	80%
	Totals & Averages	4,123	2,407	58%	3,084	75%
2002/03	Under 18	245	197	80%	228	93%
	Age 18-22	2,826	1,500	53%	2,058	73%
	Age 23-28	773	438	57%	578	75%
	Age 29-39	393	271	69%	307	78%
	Age 40-49	185	135	73%	146	79%
	Age 50-59	64	46	72%	48	75%
	Age 60+	6	2	33%	3	50%
	Totals & Averages	4,492	2,589	58%	3,368	75%
2003/04	Under 18	105	76	72%	92	88%
	Age 18-22	2,908	1,462	50%	2,119	73%
	Age 23-28	774	430	56%	553	71%
	Age 29-39	410	274	67%	331	81%
	Age 40-49	170	115	68%	129	76%
	Age 50-59	74	51	69%	66	89%
	Age 60+	7	3	43%	6	86%
	Totals & Averages	4,448	2,411	54%	3,296	74%
2004/05	Under 18	60	42	70%	52	87%
	Age 18-22	2,828	1,403	50%	2,055	73%
	Age 23-28	713	379	53%	531	74%
	Age 29-39	398	253	64%	316	79%
	Age 40-49	161	122	76%	139	86%
	Age 50-59	62	45	73%	50	81%
	Age 60+	10	7	70%	7	70%
	Totals & Averages	4,232	2,251	53%	3,150	74%
2005/06	Under 18	64	36	56%	53	83%
	Age 18-22	2,665	1,334	50%	1,994	75%
	Age 23-28	751	426	57%	576	77%
	Age 29-39	402	275	68%	330	82%
	Age 40-49	181	139	77%	156	86%
	Age 50-59	77	64	83%	71	92%
	Age 60+	7	5	71%	5	71%
	Totals & Averages	4,147	2,279	55%	3,185	77%

Success and Retention by Enrollment Status

		Headcount	Success Count	Success Rate	Retention Count	Retention Rate
2001/02	Continuing Student	2,557	1,445	57%	1,861	73%
	Currently K-12	311	266	86%	290	93%
	First-Time Student	599	300	50%	435	73%
	First-Time Transfer Student	247	151	61%	190	77%
	Returning Student	304	182	60%	233	77%
	Returning Transfer Student	104	63	61%	74	71%
2002/03	Continuing Student	2,941	1,656	56%	2,169	74%
	Currently K-12	275	227	83%	262	95%
	First-Time Student	558	300	54%	410	73%
	First-Time Transfer Student	257	153	60%	189	74%
	Returning Student	360	197	55%	263	73%
	Returning Transfer Student	101	56	55%	75	74%
2003/04	Continuing Student	3,058	1,631	53%	2,219	73%
	Currently K-12	104	81	78%	97	93%
	First-Time Student	576	307	53%	436	76%
	First-Time Transfer Student	251	123	49%	184	73%
	Returning Student	356	201	56%	275	77%
	Returning Transfer Student	101	67	66%	84	83%
2004/05	Continuing Student	3,036	1,597	53%	2,220	73%
	Currently K-12	42	30	71%	36	86%
	First-Time Student	516	261	51%	411	80%
	First-Time Transfer Student	249	157	63%	195	78%
	Returning Student	297	157	53%	225	76%
	Returning Transfer Student	92	49	53%	63	68%
2005/06	Continuing Student	2,742	1,462	53%	2,026	74%
	Currently K-12	24	18	75%	23	96%
	First-Time Student	699	391	56%	576	82%
	First-Time Transfer Student	230	148	64%	196	85%
	Returning Student	292	167	57%	235	80%
	Returning Transfer Student	159	93	58%	129	81%

Source: SMCCD Data Warehouse

06/28/2006

Math Department Awards Conferred 2001/02 - 2005/06

Awards by Type

	2001/02	2002/03	2003/04	2004/05	2005/06	Total
Associate Degree	4	4	8	4	3	23

Awards by Gender

	2001/02	2002/03	2003/04	2004/05	2005/06	Total
Female		1	1	1	1	4
Male	4	3	7	3	2	19

Awards by Ethnicity

	2001/02	2002/03	2003/04	2004/05	2005/06	Total
Asian	2	3	6	3		14
Filipino	1		1	1	1	4
Hispanic		1	1		1	3
White	1				1	2

Awards by Age

	2001/02	2002/03	2003/04	2004/05	2005/06	Total
18-22	1	3	3	2	1	10
23-28	2	1	5	2	2	12
50-59	1					1

Source: SMCCD Data Warehouse

07/31/2006