

SLO #3: Compute the area and perimeter of geometric figures.

3.1 Major Assignment: Project & Presentation

Assessment method: Rubric

Project:

Assume that you are remodeling your house.

- 1) Include the floor plan showing floor dimensions and wall height, bathroom, kitchen and minimum of two bedrooms.
- 2) Carpet, hard wood or tile the floors. Show all your steps in calculating the areas and the cost.
- 3) Prime and Paint the walls. Show all the steps in calculating the amount of primer and paint and the cost of each.
- 4) Install baseboard. Show all your work in calculating the perimeters and the cost of baseboard.

Rubric

Score	4	3	2	1	0
Clarity and reasonableness of picture	The floor plan shows all different rooms, kitchen, bathroom, and hall ways are reasonable sizes the overall scale is correct, and the walls' heights are correct	There is a slight error in drawing the floor plan, scale or the walls' heights	There are some rooms, kitchen or bathroom are not being included in the floor plan, or scale is all wrong or the walls' heights are drawn incorrectly	The floor plan does not show different rooms, the scale is wrong or the walls' heights are not included	The floor plan is not included in the project
Areas calculated	The area of each room, kitchen, bath room, hall ways and overall area are calculated correctly	The area of one room, kitchen, bath room or the hall ways is being calculated incorrectly	The areas of two parts of the floor plan (ex. a room and the kitchen) are being calculated incorrectly	The areas of three or more room (including kitchen, bathroom) calculated incorrectly	The areas are not calculated
Perimeters calculated	The perimeter of each room, kitchen, bath room and the hall ways are calculated correctly	The perimeter of one room is calculated incorrectly	The perimeter of two parts of the floor plan (ex. a room and the kitchen) is calculated incorrectly	The perimeter of three or more room (including kitchen or bathroom) calculated incorrectly	The perimeters are not calculated
Amount of material for covering floors	The amount of materials for covering the floors of the rooms, kitchen, bathroom, and the hallways are calculated correctly	The amount of materials for covering the floor of one room, kitchen, bathroom, and the hallways is being calculated incorrectly correctly or there is a slight error in overall calculation of materials for covering floors	The amount of materials for covering the floor of two rooms, including kitchen, bathroom, and the hallways is being calculated incorrectly or there is an error in overall calculation of materials for covering floors	The amount of materials for covering the floor of three or more rooms, including kitchen, bathroom, and the hallways is being calculated incorrectly or there is a substantial error in overall calculation of materials for covering floors	The amount of Floor covering materials is not being calculated

Amounts of materials for the wall coverings	The amount of primer and paint/s to cover the walls of the rooms, kitchen, bathroom and the hallways calculated correctly	There is a slight error in calculating the surface area or the cost of primer or paint	One of the materials (primer or paint) is not being calculated while the other one is being calculated correctly	There is a substantial error in calculating the surface area or the cost of primer or paint or the amount of primer or paint is not being calculated	The surface area of the walls and the amount of primer and paint is not being calculated
Amount of base board	The amount of the baseboards for the rooms, kitchen, bathroom and the hallways is calculated correctly	There is a slight error in calculating the amount of baseboard for one room but the rest is correct	The amount of base board for two rooms including kitchen or bathroom is being calculated incorrectly	There is a substantial error in the calculation of the amount of baseboard for three or more room or overall calculation	The amount of baseboard is not being calculated

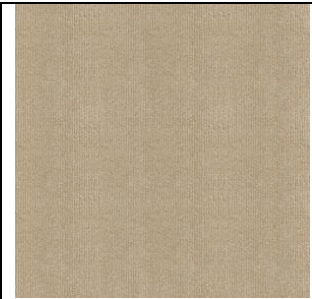
Flooring:

TrafficMaster Putty Ribbed 18 in. x 18 in. Carpet Tiles (16 Tiles/Case)

Model # CP44V2616PK Internet # 202042001

\$0.99/Sq. Ft.

\$35.64/CA-Case Covers 36 Sq. Ft.



Shaw Loop Viking Buckwheat 12 Ft. W Carpet

Model # 0701649725 Store SKU # 326686 Store SO SKU # 245121

\$4.86/SY-Square yard

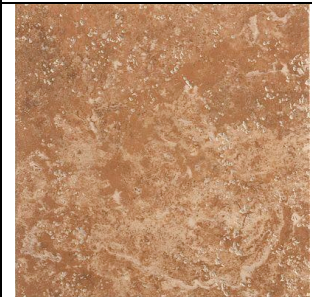


MARAZZI Montagna Soratta 12 in. x 12 in. Glazed Porcelain Floor & Wall Tile

Model # UG93 Internet # 100645904 Store SKU # 377523 Store SO SKU # 829568

\$1.68/Sq. Ft.

\$25.20/CA-Case Covers 15 Sq. Ft.



Pergo Presto Salem Oak Laminate Flooring 8mm Thick x 47-1/2 in. Length x 7-5/8 in. Width

Model # 04700 Internet # 100496275 Store SKU # 109685

\$1.97/Sq. Ft.

\$39.60/CA-Case Covers 20.1 Sq. Ft.



Primer:

Each gallon of primer covers 400 *ft*² of a surface area

KILZ 2 LATEX Gallon White Pigmented Interior/Exterior Water-Based Sealer-Primer-Stainblocker

Model # 20001 Store SKU # 140770

\$15.48/EA-Each




KILZ 2 LATEX 2 Gallon White Pigmented Interior/Exterior Water-Based Sealer-Primer-Stainblocker

Model # 20005 Store SKU # 317390


\$19.97/EA-Each






<p>KILZ 2 LATEX 5 Gallon White Pigmented Interior/Exterior Water-Based Sealer-Primer-Stainblocker Model # 20000 Store SKU # 299237</p> <p>\$67.97/EA-Each</p>	

Paint:

Each gallon of primer covers 250 *ft*² of a surface area

<p>BEHR PREMIUM PLUS ULTRA 1-Gallon Flat Interior Paint and Primer Model # 175001 Store SKU # 909921</p> <p>\$30.98/Each</p>	
<p>BEHR Premium Plus 1-Gallon Flat Interior Paint</p>	

<p>BEHR Premium Plus 1-Gallon Flat Interior Paint Model # 105001 Store SKU # 135992</p> <p>\$19.97/EA-Each</p>	
<p>BEHR Premium Plus 5-Gallon Flat Interior Paint Model # 105005 Store SKU # 136433</p> <p>\$89.00/EA-Each</p>	
<p>BEHR PREMIUM PLUS ULTRA 5-Gallon Flat Interior Paint and Primer Model # 175005 Store SKU # 910053</p> <p>\$139.00/5-Gallon</p>	

Baseboard:

- 1) Kelleher 3-1/4 in. x 9/16 in. MDF Base Moulding
Model MDF221A
\$0.85/LF-Linear Foot



2) Kelleher 3-1/4 in. x 9/16 in. Coronado Base,
Primed Pine, Moulding
Model P221PR16L
\$1.18/LF-Linear Foot



3) Kelleher 3-1/4 in. x 9/16 in. Primed Pine
Coronado Base Moulding
Model P221
\$1.88/LF-Linear Foot

