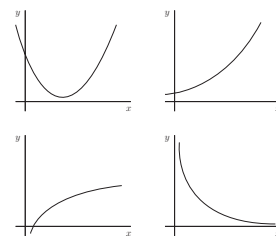


Fall 2008 MWF 8:10 – 9:40 (Section AB)

Instructor: Jon Freedman
 Office: 2307
 Phone: 738 – 7032
 e-mail: freedmanj@smccd.edu
 Website: www.smccd.edu/accounts/freedmanj/



Office Hours: M W 11:30 – 12; Tu Th 8:30 – 9:30; Tu 1:20 – 2; F 11:10 – 12:30 *and by appointment.*

Prerequisite: Math 110 with C or better, or appropriate score on placement test.

Text: Lehmann, Jay. *Intermediate Algebra Functions & Authentic Applications*.
 Third Ed. Upper Saddle River, NJ: Pearson Custom Publishing, 2008[!].
 (Eiffel Tower on the cover.) You may wish to purchase the e-book instead.

Materials: A TI-84 (or TI-83+) graphing calculator is required for this course. Other graphing calculators may perform the same functions and may be acceptable but see me about this. If you have a TI-89, TI-92, or other technology that can perform symbolic manipulations you may not be allowed to use it on some forms of assessment.

Important Dates:	Last day to Add this course:	Friday, August 29
	Last day to Drop this course without a W:	Friday, September 12
	Last day to Withdraw from class:	Monday, November 17
	Holidays:	9/1; 11/10; 11/27 – 28
	Last regular class:	Wednesday, December 10
	Final Exam (comprehensive):	Monday, December 15 8:10 – 10:40 am

Assignments: Homework assignments will consist of class handouts and book problems. The book problems will be due roughly every class and you will submit them electronically through MyMathLab (your code is included with your textbook or e-book) unless I instruct you to do otherwise. Assignments will be posted to my web page and in the event that you have any difficulty finding an assignment or if you need assistance with an assignment, you should contact me through e-mail.

Grading: Assignments (homework, classwork, quizzes) (30%)
 3 – 5 Tests (50%)
 Final (20%)
 I will drop your worst test score (Not the final). There will be no makeup tests. If you are late for a test you will have only the remaining time to complete the test (so don't be late). If you know you are going to miss a test date, contact me at least three days in advance and we can arrange an alternate test to be taken in advance of the class test date.
 I will excuse two homework quizzes and one week-long assignment set (or drop your lowest score if you submit all of them). I will give quizzes often. I will drop your worst quiz. There will be no makeup quizzes.

Grading Scale:

A	≥ 90%
80%	≤ B < 90%
70%	≤ C < 80%
60%	≤ D < 70%
F	< 60%