

CSM and the Community It Serves: Demographic Profile

CSM is located in central San Mateo County with Skyline College located to the North and Cañada College located to the South. (See Figure 1.) San Mateo County experienced rapid population growth between 1950 and 1970. During this period of time, the population increased 136 percent, twice the rate of the San Francisco Bay Area as a whole. However, between 1990 and 2000, the county's population increased by only 8.9 percent, approximately one-half the rate of the regional population growth. The 2005 population estimate for San Mateo County is 699,610. (See Figure 2.) This figure represents a decline of 1.1 percent since 2000. Projections indicate that the San Mateo County population will remain relatively stable for the next two decades. In contrast, the neighboring counties of Santa Clara, Alameda, and Contra Costa are expected to experience population growth at a rate more than three times that of San Mateo County through 2025.

San Mateo County is expected to follow state-wide demographic trends with respect to age and ethnicity: median age in both genders continues to increase and the non-white segment of the population continues to grow as the white population proportionately declines. Using the most recent comparative state-wide demographic information available, San Mateo County is comprised of a population of slightly older residents, more affluent and highly educated than California as a whole. Although there are proportionately fewer Hispanic and African American residents than state-wide, San Mateo County has a greater proportion of Pacific Islander and Asian residents, as well as more households comprised of foreign born persons and households where a language other than English is spoken. (See Figure 2.) In addition, San Mateo County's residents are significantly more affluent than the state's residents as a whole on every standard measure of economic well-being and affluence available, including median household income, per capita income, unemployment rate, percent of families below poverty, median value of owner-occupied homes, home ownership rate, college-going rates for high school graduates, etc. (See Figure 2.)

Between 1970 and 1990, there was a steady decline in the number of students enrolled in San Mateo County public schools and the total number of high school graduates (-26.4 percent). However, school enrollments and the number of high school graduates stabilized and have steadily increased since 1991. Between 2001-2005, the total number of high school graduates increased 4.5 percent. Long-term data, 1990-2005, indicate approximately a 25 percent increase in high school graduates. (See Figure 3.) Data from the California State Department of Finance Population Research Unit, using birth rate and other demographic data for San Mateo County, project continuing minor increases in public school enrollments and high school graduates at least through the year 2010. The proportion of San Mateo County high school graduates enrolling directly into California higher education has grown at a greater rate than the increase in number of high school graduates. (See Figure 4.) However, while the proportion of high school graduates enrolling in the University of California and California State University systems has steadily increased since 1995, the proportion of graduates enrolling in a California Community College has decreased by 11.8 percent. (See Figure 4.)

Figure 1

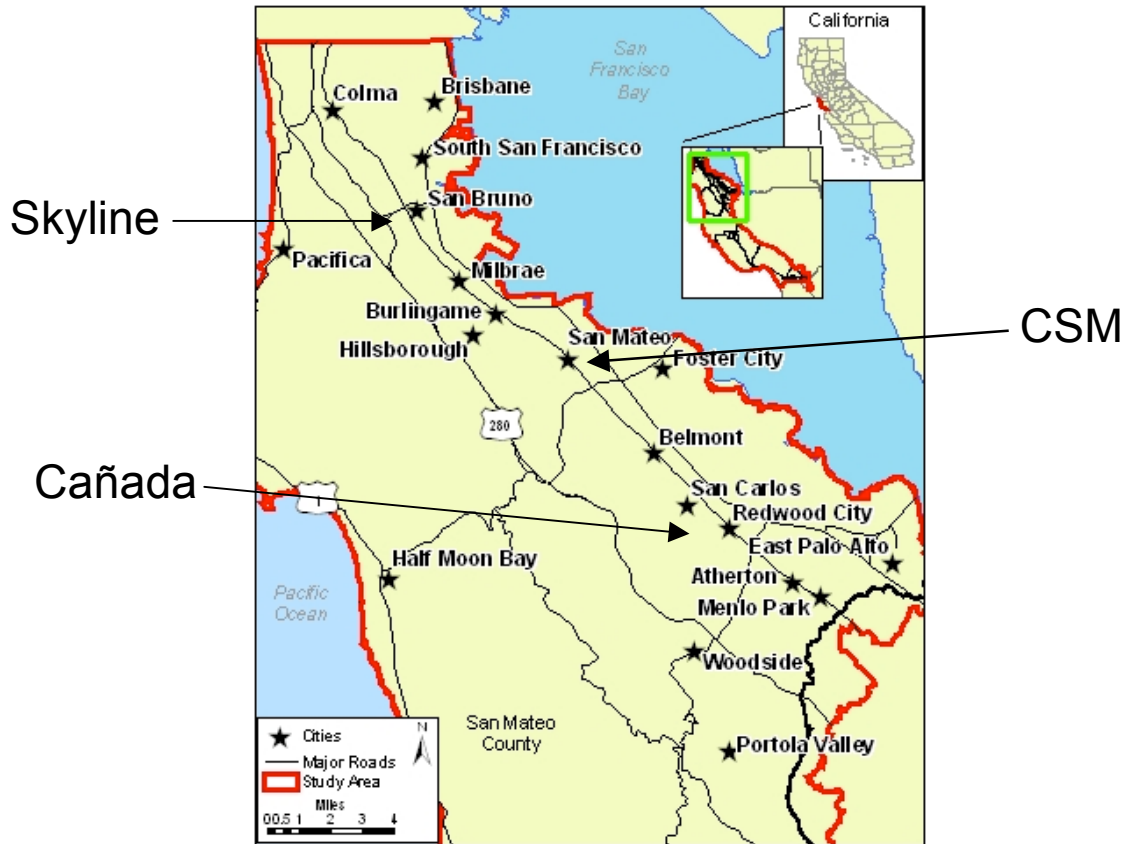


Figure 2

San Mateo County Quick Facts

| People Quick-Facts | San Mateo County | California |
|--|-------------------------|-------------------|
| Population, 2005 estimate | 699,610 | 36,132,147 |
| Population, percent change, April 1, 2000 to July 1, 2005 | -1.1% | 6.7% |
| Population, 2000 | 707,161 | 33,871,648 |
| Population, percent change, 1990 to 2000 | 8.9% | 13.6% |
| Persons under 18 years old, percent, 2004 | 23.3% | 26.7% |
| Persons 65 years old and over, percent, 2004 | 12.8% | 10.7% |
| Female persons, percent, 2004 | 50.5% | 50.1% |
| Black persons, percent, 2004 | 3.4% | 6.8% |
| American Indian and Alaska Native persons, percent, 2004 | 0.5% | 1.2% |
| Asian persons, percent, 2004 | 22.9% | 12.1% |
| Native Hawaiian and Other Pacific Islander, percent, 2004 | 1.4% | 0.4% |
| Persons reporting two or more races, percent, 2004 | 2.8% | 2.4% |
| Persons of Hispanic or Latino origin, percent, 2004 | 22.1% | 34.7% |
| White persons, not Hispanic, percent, 2004 | 48.0% | 44.5% |
| Living in same house in 1995 and 2000, pct age 5+, 2000 | 56.6% | 50.2% |
| Foreign born persons, percent, 2000 | 32.3% | 26.2% |
| Language other than English spoken at home, pct age 5+, 2000 | 41.5% | 39.5% |
| High school graduates, percent of persons age 25+, 2000 | 85.3% | 76.8% |
| Bachelor's degree or higher, pct of persons age 25+, 2000 | 39.0% | 26.6% |
| Mean travel time to work (minutes), workers age 16+, 2000 | 27.0 | 27.7 |
| Homeownership rate, 2000 | 61.4% | 56.9% |
| Housing units in multi-unit structures, percent, 2000 | 32.3% | 31.4% |
| Median value of owner-occupied housing units, 2000 | \$469,200 | \$211,500 |
| Households, 2000 | 254,103 | 11,502,870 |
| Persons per household, 2000 | 2.74 | 2.87 |
| Per capita money income, 1999 | \$36,045 | \$22,711 |
| Median household income, 2004 | \$70,819 | \$48,440 |
| Percent of families below poverty, 2003 | 3.5% | 13.8% |

| Geography Quick-Facts | San Mateo County | California |
|---|--|-------------------|
| Land area, 2000 (square miles) | 449 | 155,959 |
| Persons per square mile, 2000 | 1,574.7 | 217.2 |
| Metropolitan or Micropolitan Statistical Area | San Francisco-Oakland-Fremont, CA Metro Area | |

Source: US Census Bureau State & County QuickFacts

Figure 3

**San Mateo County
High School Graduates (Public and Private)
1990 - 2005**

| Year | Enrollment | % Change Prior Year |
|------|------------|---------------------|
| 1990 | 5,031 | NA |
| 1991 | 4,779 | -5.0% |
| 1992 | 4,972 | +4.0% |
| 1993 | 5,058 | +1.7% |
| 1994 | 5,051 | -0.1% |
| 1995 | 5,376 | +6.4% |
| 1996 | 5,160 | -4.0% |
| 1997 | 5,207 | +0.9% |
| 1998 | 5,478 | +5.2% |
| 1999 | 5,608 | +2.4% |
| 2000 | 5,925 | +5.7% |
| 2001 | 5,951 | +0.4% |
| 2002 | 5,934 | -0.3% |
| 2003 | 6,073 | +2.3% |
| 2004 | 6,201 | +2.1% |
| 2005 | 6,219 | +0.3% |

| | |
|---------------------|--------|
| %Change 1990 - 2005 | +23.6% |
| %Change 2001 - 2005 | +4.5% |