

Animalia



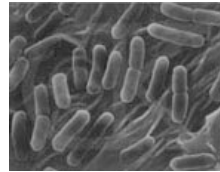
Plantae



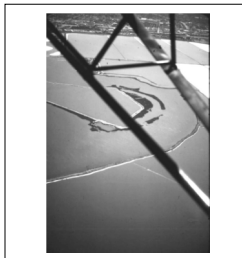
Fungi



Bacteria



Archaea



Protista

- *Alexandrium*
- *Cryptosporidium*
- *Euglena*
- *Giardia*
- *Macrocystis*

Protista

- *Microcladia*
- *Naegleria*
- *Paramecium*
- *Plasmodium*
- *Trypanosoma*

Natural groups are based on _____.

Domains are based on _____.

What are the domains?

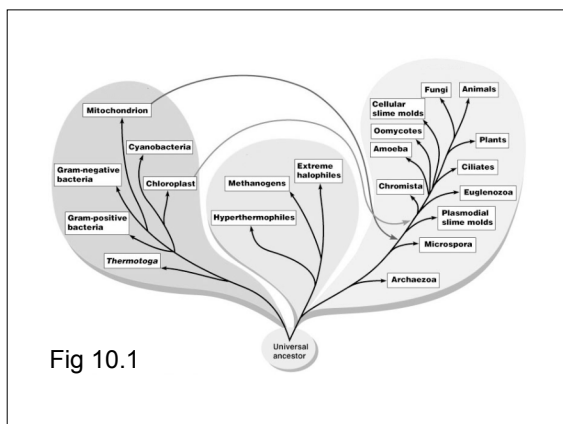


Fig 10.1
