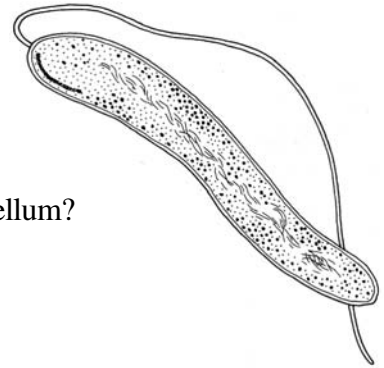
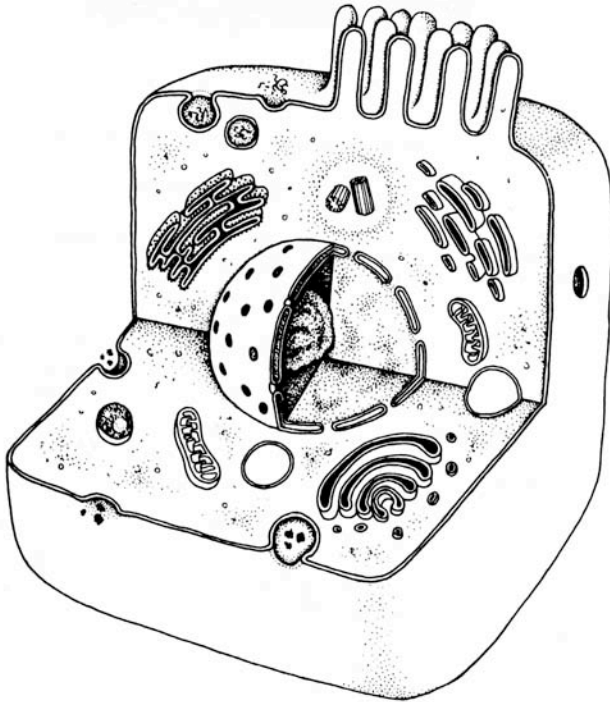


## Cell Structure

- How are the ER, Golgi apparatus, and vacuoles related?
- Show how the movement of internal membranes contributes to movement of the cell.
- Show how internal membranes contribute to the cell wall.
- Where is the extracellular matrix?
- Which organelles are not part of the endomembrane system?



How does the flagellum shown here differ from a eukaryotic flagellum?

Where does an alga such as *Closterium* store  $\text{CaCO}_3$  crystals?  
What keeps the chloroplasts “pinned” to the plasma membrane?

