

Support types:

Bone

Cartilage

Chitin

Endoskeleton

Exoskeleton

Hydrostatic skeleton

Spicules

Xylem

Support type

Porifera

Cnidaria

Annelida

Mollusca

Arthropoda

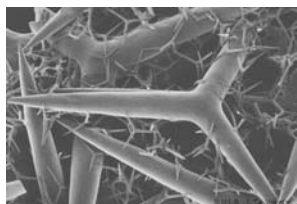
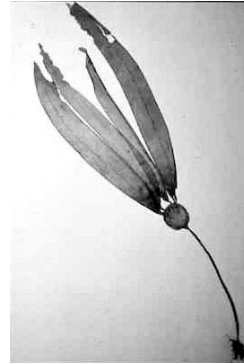
Echinodermata

Chordata: Chondrichthyes

Chordata: Osteichthyes

Chordata: Aves

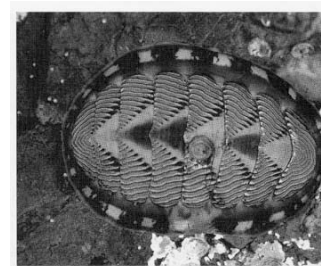
Support Systems

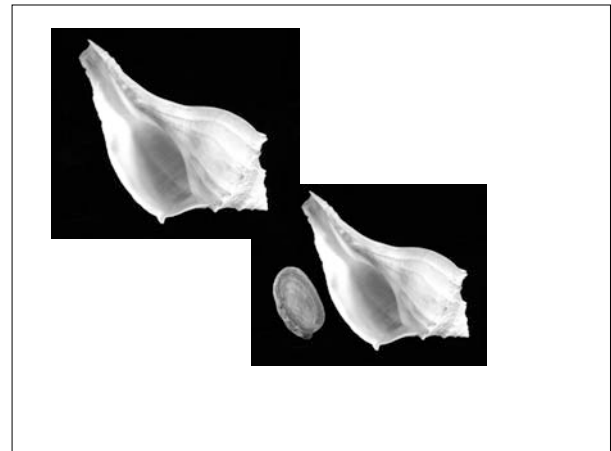
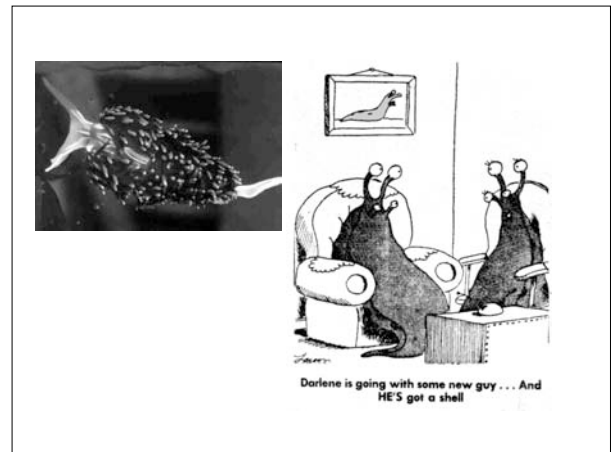
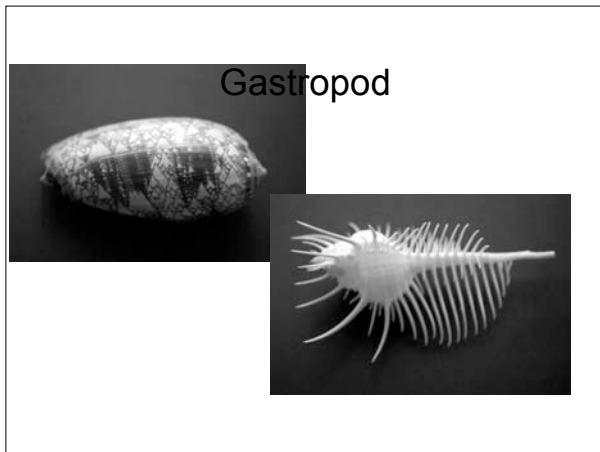


CaCO₃
SiO₂
Spongin

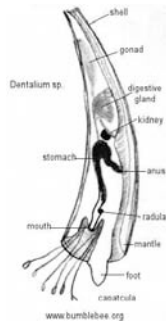


Chiton





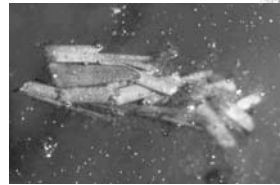
Scaphopod



Cephalopod



Insecta



Trichoptera



Lepidoptera



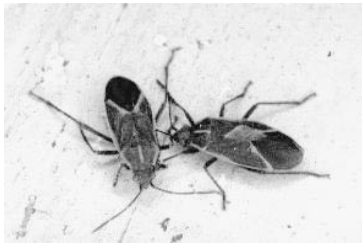
Diptera



Coleoptera



Hemiptera



Hymenoptera



Syrphid



"Bee fly drinking nectar."
BIOL 215



